

# Fixing the limited wifi error on Windows 10

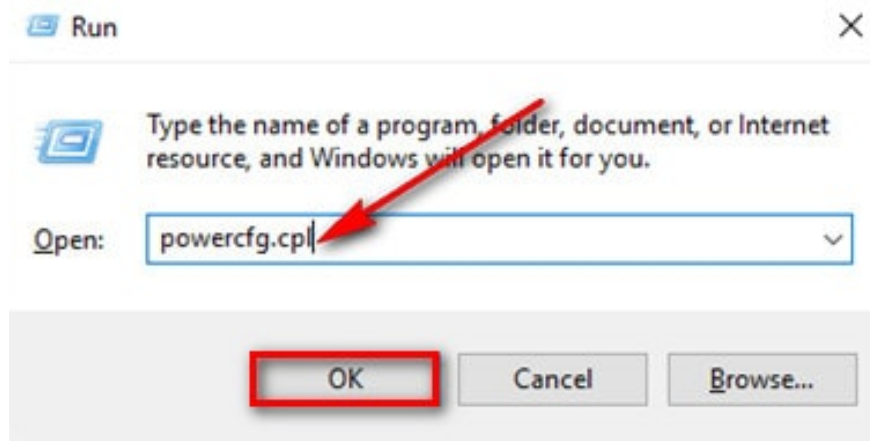
Fixing the 'Wi-Fi limited' error on Windows 10 will allow you to connect to Wi-Fi and access the internet to watch movies, listen to music, and play games normally. This is a fairly common error that many people encounter, so don't worry, let's refer to the solutions in this article.

After **upgrading to the Windows 10 New Update** from Windows 10, some users encounter the "Wi-Fi limited" error, losing their Wi-Fi connection even though other devices can still access it normally. Here are some ways to fix the "Wi-Fi limited" error on Windows 10.

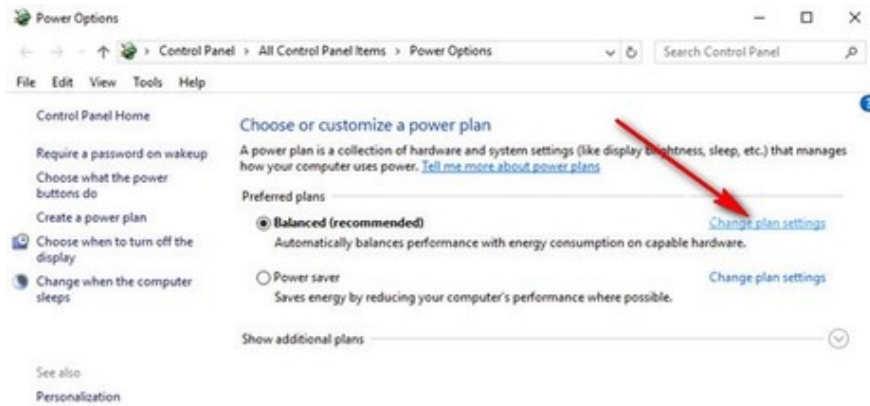
Fixing the "Wi-Fi limited" error on Windows 10 -

## Method 1: Reset Wireless Adapter

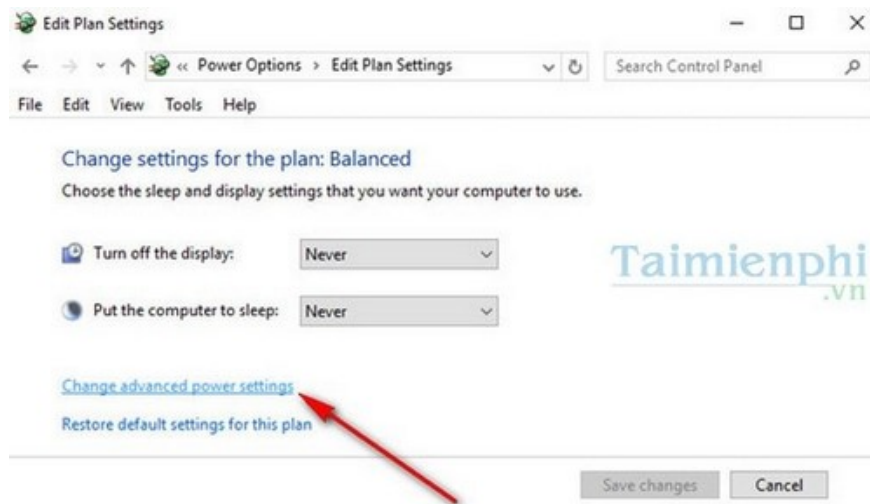
**Step 1:** From the Run dialog box, type "**powercfg.cpl**" and press Enter or **OK**.



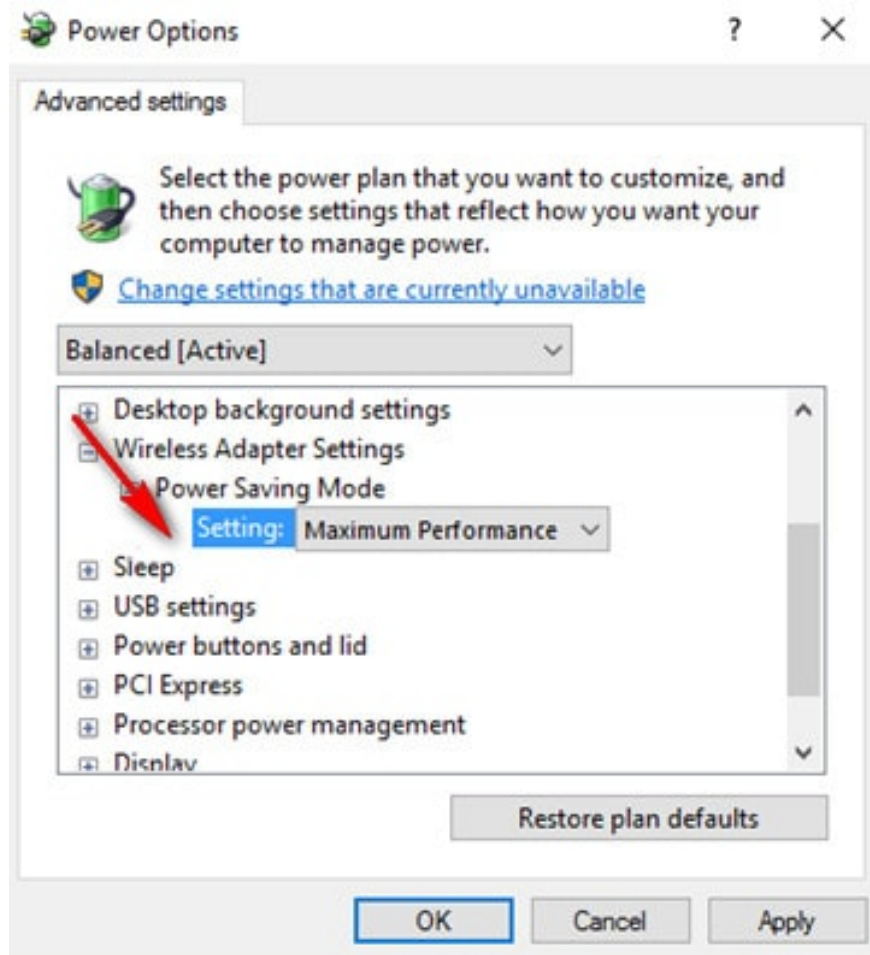
**Step 2:** Here, click on "**Change plan settings**"



**Step 3:** Click on "Change advanced power settings"



**Step 4:** Here, click on "Maximum Performance" as shown below, then select **Wireless Adapter Settings**, and then click **OK**.



Next, check your computer's Wi-Fi connection. If it's still not working, you can try the second method:

**Method 2: Remove and reinstall the Wi-Fi driver on your computer.**

*Step 1:* From the home screen, right-click the **Start** button and then select **Device Manager**.

Power Options

Event Viewer

System

Device Manager

Network Connections

Disk Management

Computer Management

Command Prompt

Command Prompt (Admin)

---

Task Manager

Control Panel

File Explorer

Search

Run

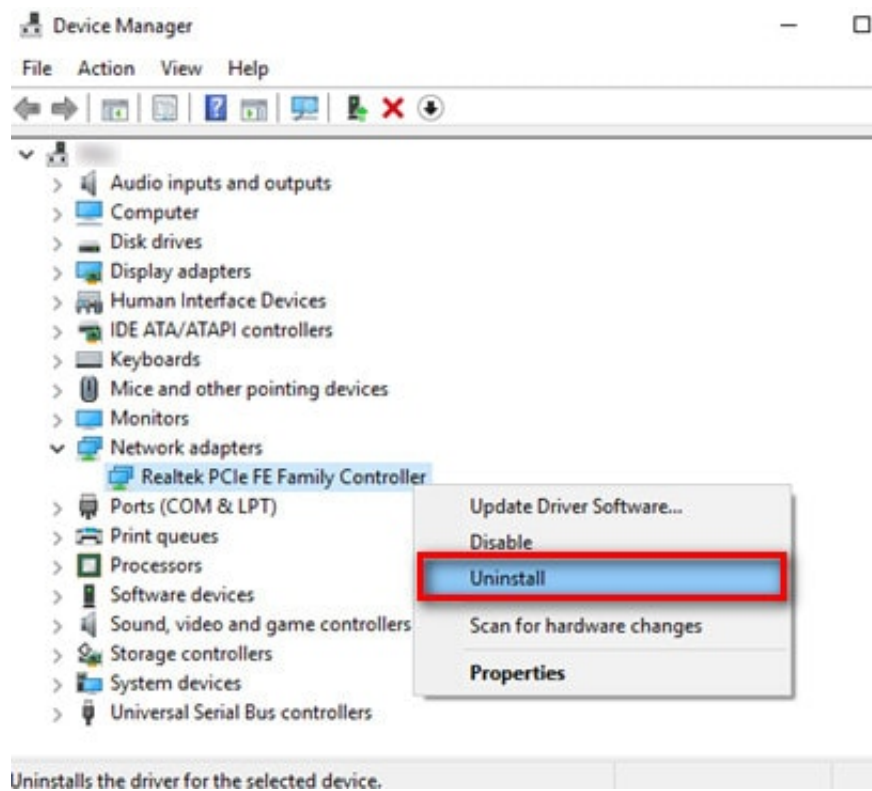
---

Shut down or sign out

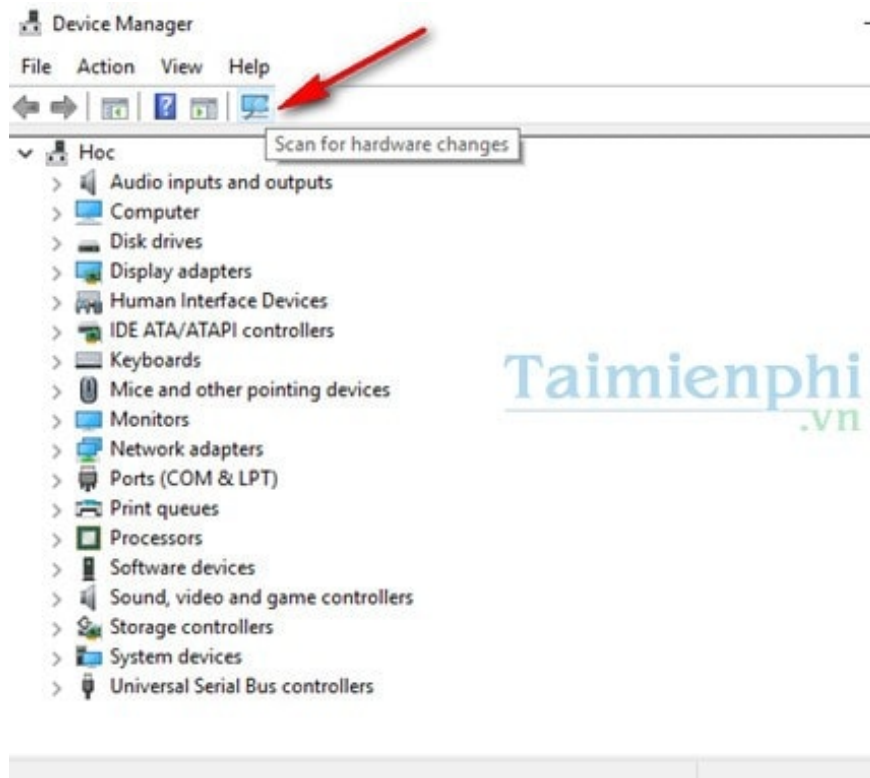


Desktop

**Step 2:** Find the **Network Adapter** section and then select **Uninstall** to remove the Wi-Fi adapter's installation files.

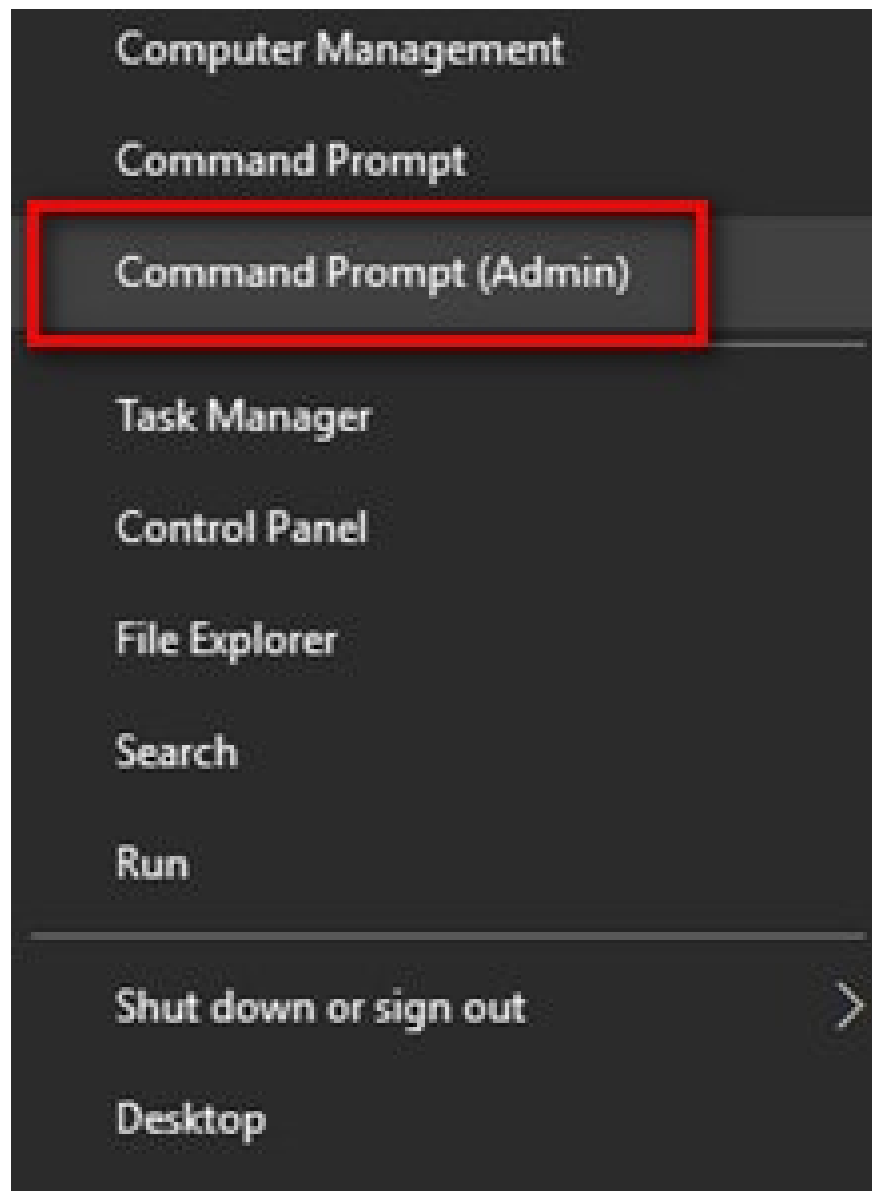


**Step 3:** Next, click on "Scan for hardware changes" to allow the system to automatically detect and reinstall the drivers for your computer.



Then, try connecting to a Wi-Fi network to check. If that doesn't work, you can try the third method:

**Method 3: Reset your computer's IP address** (here we use the command line; you can refer to our guide on setting an IP address for Windows 10 here).

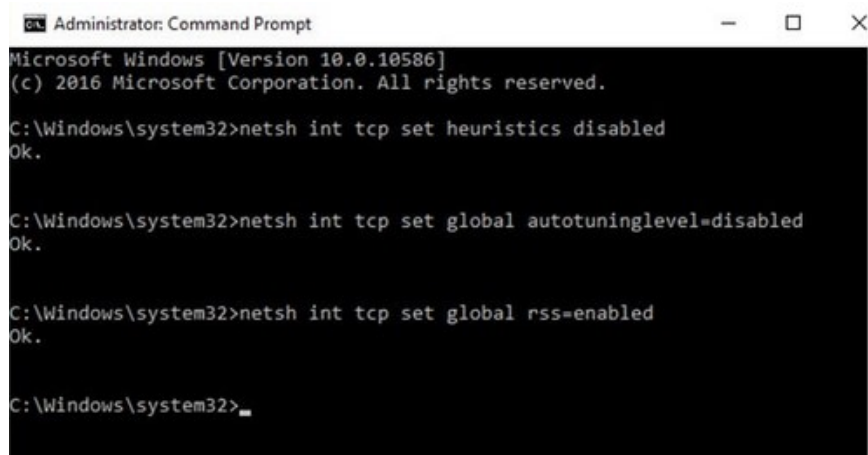


**Step 2:** Here, enter the following commands one by one:

``netsh int tcp set heuristics disabled`` and press Enter

``netsh int tcp set global autotuninglevel=disabled`` and press Enter

``netsh int tcp set global rss=enabled`` and press Enter



```
Administrator: Command Prompt
Microsoft Windows [Version 10.0.10586]
(c) 2016 Microsoft Corporation. All rights reserved.

C:\Windows\system32>netsh int tcp set heuristics disabled
Ok.

C:\Windows\system32>netsh int tcp set global autotuninglevel=disabled
Ok.

C:\Windows\system32>netsh int tcp set global rss=enabled
Ok.

C:\Windows\system32>
```

Finally, restart your computer and check the connection.

These are some ways to completely fix the "limited Wi-Fi" error on Windows 10, helping you connect to the internet wirelessly in the best way possible. You can also refer to how to **create a Windows 10 recovery USB drive** .

You finished reading the article "**Fixing the limited wifi error on Windows 10**" edited by the [TipsMake](#) team. We hope this article has provided you with many useful tech tips and tricks. You can search for similar articles on tips and guides. Thank you for reading and for following us regularly.