

# Fixing the error 'WiFi doesn't have a Windows 10 configuration IP validation'

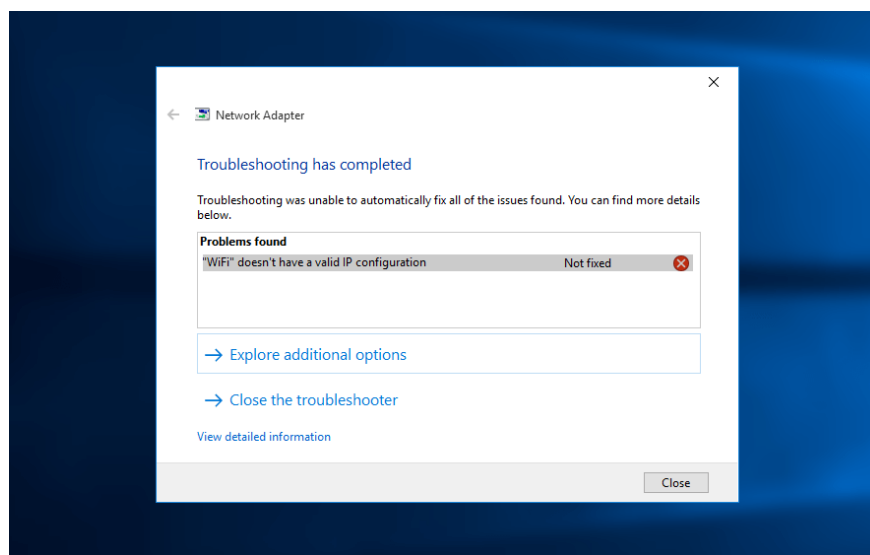
However, in some cases if the IP address of the system (Internet Protocol) is misconfigured, it will cause a 'WiFi doesn't have a IP configuration validate' or 'Ethernet doesn't have a configuration IP validation' or 'Wireless network không có m?t c?u hình IP h?p l?'.  
'

All computers and routers are provided with IP addresses to help users access the Internet. Similar to the Wifi Router, the Internet service provider (ISP) provides the IP address for all Wifi Routers to support users to connect to the Internet on their services.

However, in some cases if the IP address of the system (Internet Protocol) is misconfigured, it will cause a '**WiFi doesn't have a IP configuration validate**' or '**Ethernet doesn't have a configuration IP validation**' or '**Wireless network không có m?t c?u hình IP h?p l?**'.

Usually, there are three main causes of "WiFi doesn't have a valid IP configuration" error on your Windows 10 computer: router error, wrong IP address error, and finally a NIC error.

To fix **WiFi** error do **n't have a IP configuration valid** on Windows 10 computer, please refer to the following article of Network Administrator.



## 1. Check the network card settings (Network Adapter)

## Step 1:

Press the **Windows + R** key combination to open the Run command window.

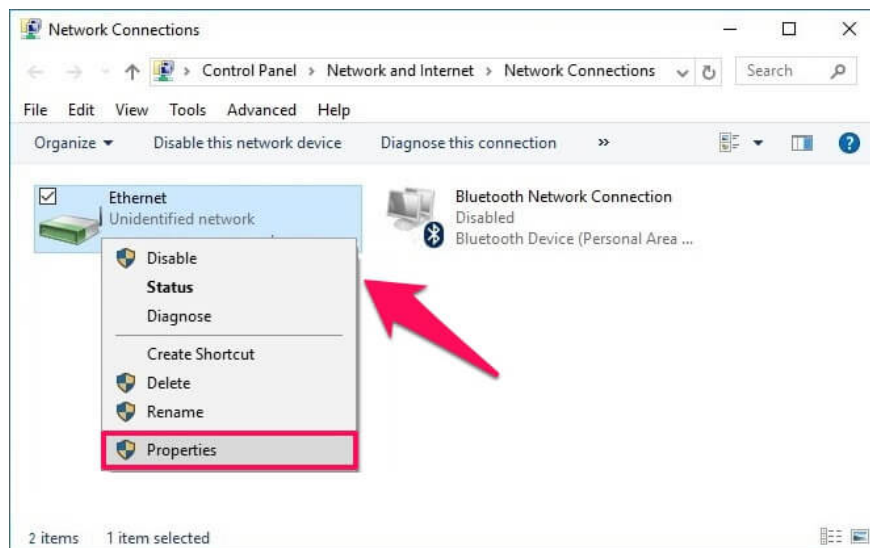
## Step 2:

Enter the following statement in the Run command window then click **OK** or press **Enter** to open the Network connections window:

```
ncpa.cpl
```

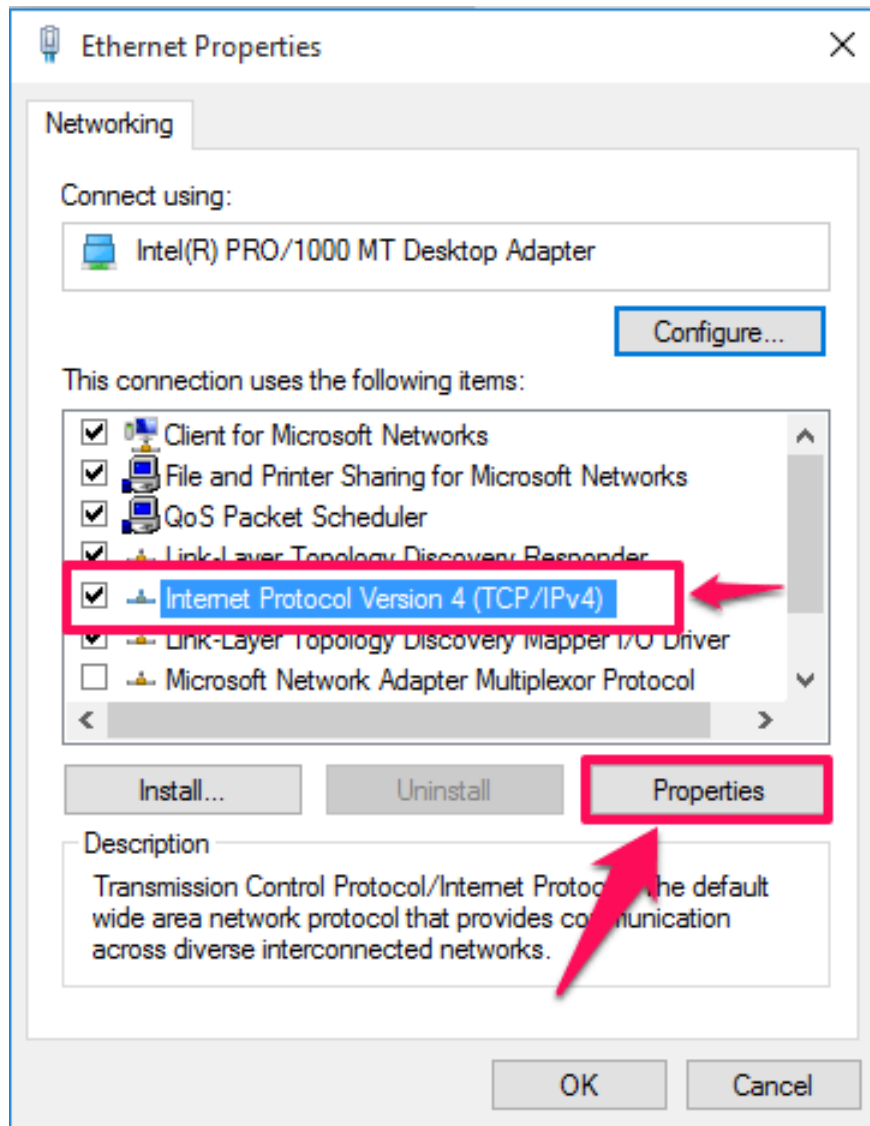
## Step 3:

On the Network connections window, right-click the network connection you are using, select **Properties** .



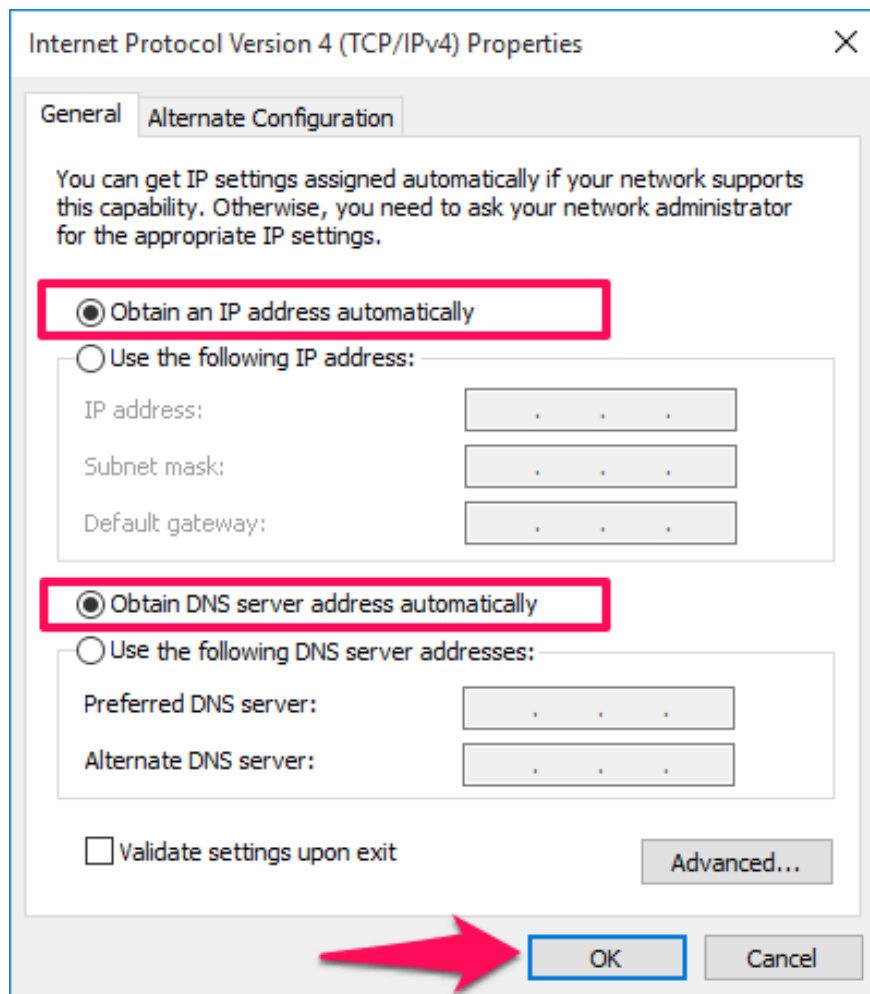
## Step 4:

On the Properties dialog window, find and select **Internet Protocol Version 4 (TCP / IPv4)** option and click **Properties** .



### Step 5:

Next check the box to select '**Obtain an IP address automatically**' and '**Obtain DNS server address automatically**'.



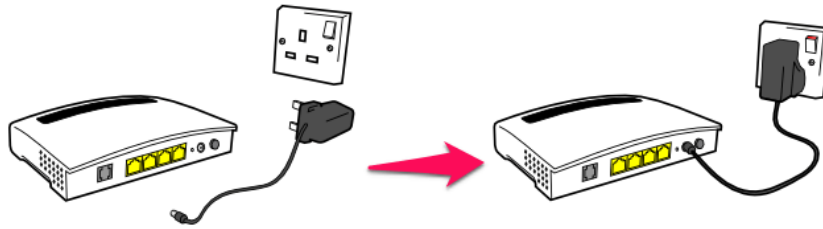
## Step 6:

Click **OK** to finish.

## 2. Restart the Router or Modem

If you apply the above method and still cannot fix the error, you can try to restart the Router or Modem to fix the WiFi error.

Simply turn off your router and wait about 5 minutes. Then re-enable the Router and check whether WiFi doesn't have a longer IP configuration valid.



### 3. Reinstall the Network Adapter

#### Step 1:

Press the **Windows + R** key combination to open the Run command window. Then enter the command below and then click OK or press Enter to open the Device Manager window:

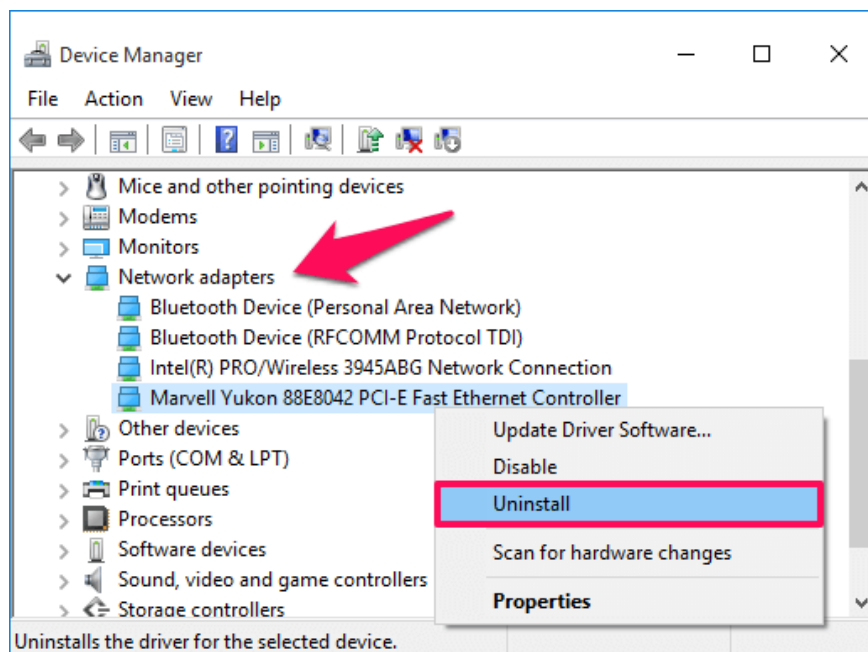
```
hdwwiz.cpl
```

#### Step 2:

Add Device Manager window, expand **Network adapters** option and note the name of the network card you are using.

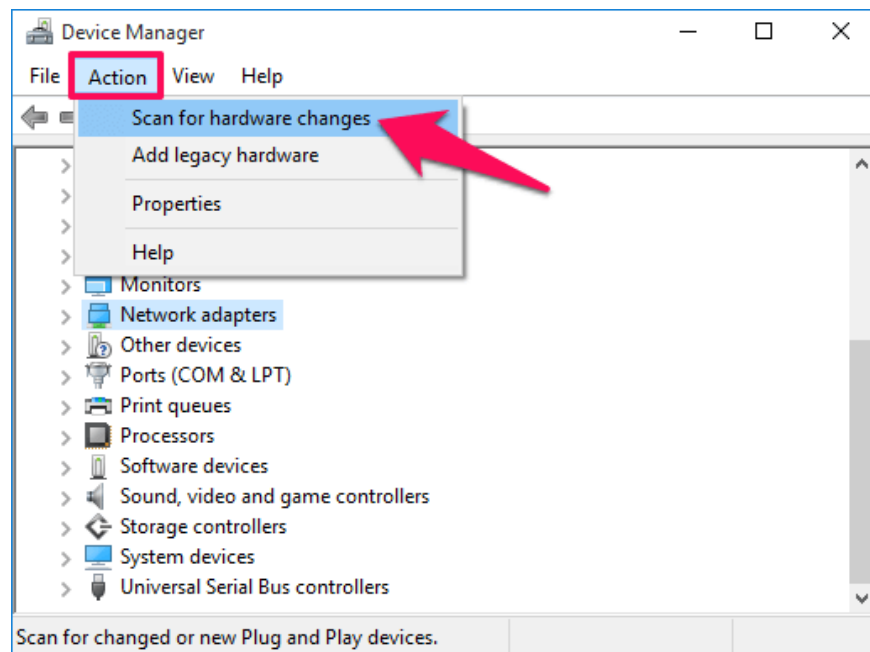
#### Step 3:

Right-click the Ethernet card you are using, select **Uninstall**.



## Step 4:

Next, click **Action** and select the option called '**Scan for hardware changes**'.



Searches will be performed and your network card interface will be added. You can now run the Windows Network Diagnostics tool or the Network Adapter troubleshooting tool to see if the problem has been fixed.

## Refer to some of the following articles:

1. Wifi on Windows 10 does not connect after starting from Sleep mode
1. This is how to reset network settings on Windows 10 with just one click
1. Conflict of IP address error when connecting to Wifi on iPhone, iPad, this is a fix

## Good luck!

You finished reading the article "**Fixing the error 'WiFi doesn't have a Windows 10 configuration IP validation'**" edited by the [TipsMake](#) team. We hope this article has provided you with many useful tech tips and tricks. You can search for similar articles on tips and guides. Thank you for reading and for following us regularly.