

Fixed driver disconnection when connecting to WiFi connection

If the laptop does not connect to the WiFi router and if you try to get a status report with the command netsh wlan show wlanreport, you may get a driver disconnected error while linking.

If the laptop does not connect to the WiFi router and if you try to get a status report with the command netsh wlan show wlanreport, you may get a driver disconnected error while linking.

The above error can occur due to a number of reasons. For some users, the error occurs after updating Windows 10 laptop to a newer version.

Luckily, the error can be solved by following some troubleshooting tips in the article below.

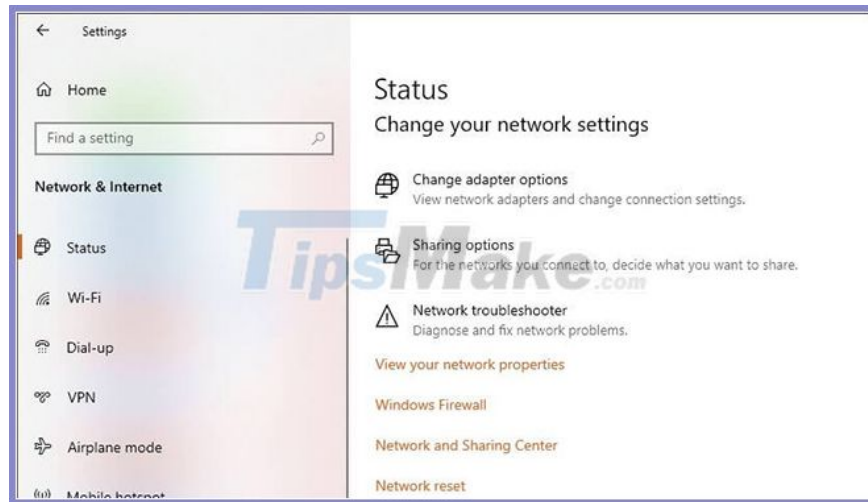
1. Use IObit Driver Booster 7



Driver Booster 7 is an extremely useful application that allows you to never worry about not updating drivers on your system.

This great app simplifies the process of finding specific drivers on multiple manufacturer websites and gets the job done with just a few clicks.

2. Run Network Troubleshooter



Step 1: Click Start and select Settings.

Step 2: Go to Network and Internet.

Step 3: Click Status.

Step 4: Scroll down to Change your network settings.

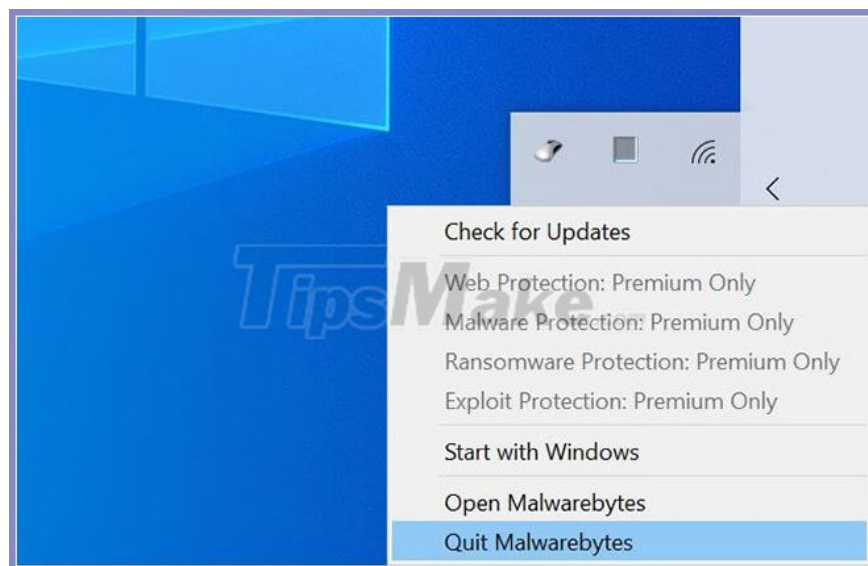
Step 5: Click on Network Troubleshooter.

Step 6: Windows Network Troubleshooter will start scanning.

Step 7: Follow the instructions on the screen and apply any recommended fixes.

The Windows Network Troubleshooter will fix minor problems with the WiFi adapter. If the problem persists, follow the next steps below.

3. Disable antivirus software



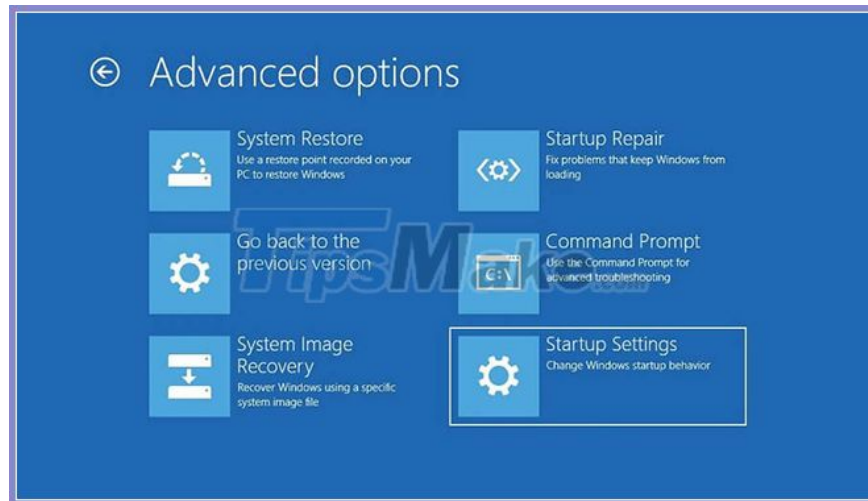
Step 1: Expand the system tray.

Step 2: Right-click on the anti-virus program icon and select Disable / Turn off temporarily.

Step 3: Once disabled, try connecting to the network again.

Antivirus software can cause problems with the network adapter, leading to connection problems. Also, check the Startup Apps tab and disable any unwanted apps at startup.

4. Start up in Safe Mode with Networking



Start in Safe Mode with Networking

Step 1: Click Start and select Settings.

Step 2: Open the Recovery tab.

Step 3: Scroll down to the Advanced Startup section.

Step 4: Click Restart Now.

Step 5: Select Troubleshoot.

Step 6: Click Advanced Options.

Step 7: Click Startup Settings.

Step 8: Select Restart.

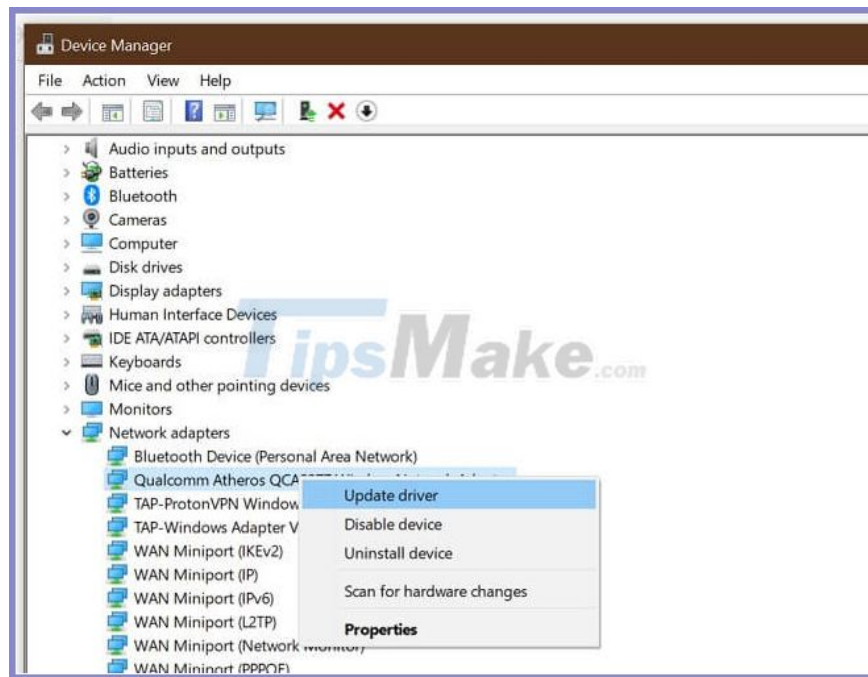
Step 9: Next, press 7 or the appropriate number to select Enable Safe Mode with Networking.

Step 10: The system will reboot in Safe Mode with Networking.

Step 11: Try connecting to the WiFi network to see if the problem is resolved.

If you can connect to the network in Safe Mode, it is most likely that the error is stemming from third-party software installed on the system. Try uninstalling recently installed apps.

5. Update the network driver



Step 1: Press Windows key + R.

Step 2: Type dvmgmt.msc and click OK.

Step 3: In Device Manager, expand the Network Adapters category.

Step 4: Right-click on the wireless network adapter.

Step 5: Select Update Driver.

Step 6: Select Search automatically for updated driver software.

Step 7: Wait for Windows to download and install a newer version of the network driver.

After installation, restart the computer. If the problem persists, try resetting the network adapter .

Manually download from the manufacturer's website

If Windows doesn't detect and download any updates, check the network card manufacturer's website.

Most laptops use Qualcomm chips for WiFi. Check the Qualcomm driver section to see if your card has a new update to install:

<https://www.qualcomm.com/products/wi-fi>

Reset Winsock

Step 1: Press the Windows key.

Step 2: Type cmd, right-click on Command Prompt and select Run as Administrator to open Command Prompt with admin rights.

Step 3: In the Command Prompt window, enter the following commands one by one and press Enter after each command:

```
netsh winsock reset netsh int ip reset ipconfig / release ipconfig / renew ipcon.
```

Step 4: Close Command Prompt.

Uninstall the network adapter

Step 1: Press the Windows key.

Step 2: Enter the device, click Device Manager.

Step 3: Expand the category of Network adapters.

Step 4: Right-click on Wireless Network Adapter and select Uninstall Device.

Step 5: Click Uninstall to confirm.

After your PC reboots, Windows will automatically install the network adapter driver. Check if the error has been resolved.

7. Check for Windows updates

Windows 10 comes with the necessary driver updates from the manufacturer. Keeping your Windows 10 PC up to date can fix many compatibility issues. Refer to the article: [How to keep your Windows computer up to date](#) for more details .

You finished reading the article "**Fixed driver disconnection when connecting to WiFi connection**" edited by the [TipsMake](#) team. We hope this article has provided you with many useful tech tips and tricks. You can search for similar articles on tips and guides. Thank you for reading and for following us regularly.