

Simple Windows black screen fix, while preserving your data.

The black screen error on Windows 7, 8, 10, and 11 renders your computer unusable. Free Download will guide you on how to safely fix this error without worrying about data loss.

When your computer experiences a black screen error, all your work will be interrupted. This article will help you fix the problem quickly and protect your important data.

Contents:

1. Causes of the error
2. Hardware error (unable to boot into Windows)
3. System error (Windows successfully booted)

How to fix a black screen on your computer.

The screen is not turned on.



If you encounter a black screen error right from startup, with no information displayed, it's likely due to the monitor not being turned on or a connection problem.

Check your computer monitor's power switch to see if it's on; if not, turn it on again. Next, check that both signal cables are connected correctly. Many users experience this error due to incorrect port connections (DisplayPort, HDMI, DVI, Thunderbolt, VGA).

** Due to the power cord of the case and monitor*

+ Check the power cord of the computer case.

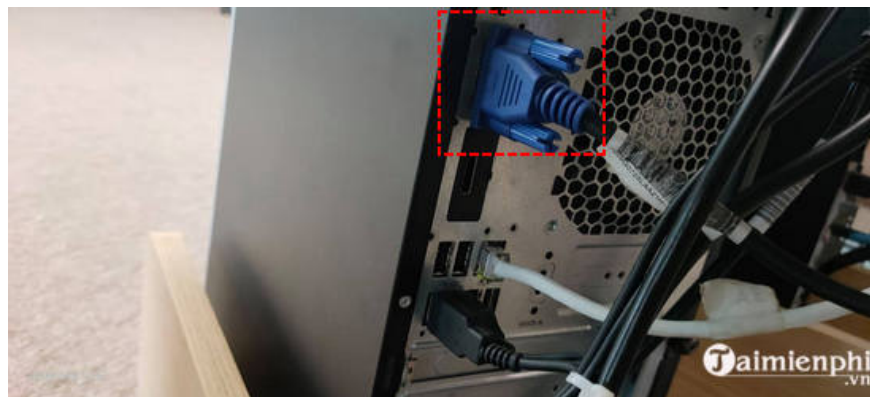
When you start your computer and see a black screen, the power supply fan isn't running, and the indicator lights on the motherboard aren't lit, it's very likely that your power supply or wiring is not connected or is faulty.



Use a voltage tester to check along the power outlet to the computer's power cord to see if there is power. Open the computer case and reconnect the power cables to the motherboard. If there is still no power, you may need to consider replacing the power cord or the power supply.

Check the monitor power cord, and the cables connecting the monitor and the case.

If the computer's power supply is still working, you need to check the cables connecting the power supply to the monitor, as well as the power cord for your monitor.



Both ends must be attached securely and correctly.



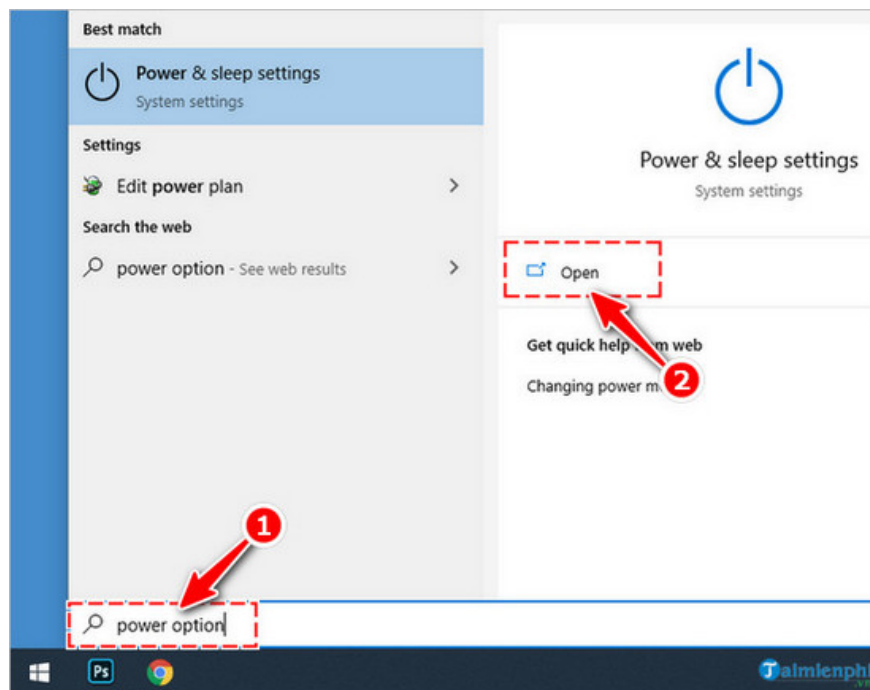
In the worst-case scenario, you might need to replace this connecting cable.

** Because the screen sleep mode is enabled.*

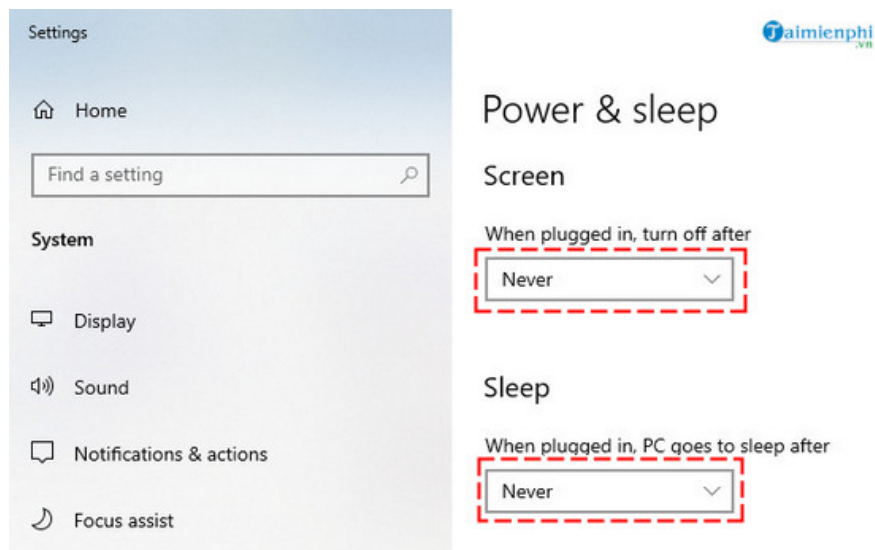
If you encounter an error during normal use, it may be because your computer has an automatic screen off setting. To reset it, follow these steps:

Step 1: Press the Windows key to open **the Start Menu** . Type "**Power Options** " .

Step 2: Access the **Power & Sleep** section .



Step 3: Set the **Screen** and **Sleep** settings to **Never** .



* *Battery runs out while using laptop*

Similar to using a desktop computer, your laptop may experience errors when the battery runs out. In this case, you simply need to plug the laptop back in and continue using it.

2.1. Due to the Graphics Card

Not all black screen errors on computer monitors caused by graphics cards are serious and difficult to fix. If Windows doesn't detect the screen, you can use the **Windows key + Ctrl + Shift + B** to force the graphics card to restart.



In the case of a more serious Black Screen error, completely remove the computer monitor and connect it to another computer to check. If that doesn't work, try removing and cleaning the graphics card and reinstalling it, or try replacing it with a different graphics card.

2.2. RAM Errors

After checking the power supply and graphics card, if the black screen error persists, you need to check the RAM.

Remove the RAM and clean the pins and connectors to remove dust or loose connections. Alternatively, you can

try installing the RAM in a different slot or device to test it.

2.3. Hard drive errors

A faulty or malfunctioning hard drive is also a major cause of a black screen error upon Windows startup. If you're using an HDD, place your hand on the hard drive during startup to see if it vibrates, indicating it's working. If the hard drive is running but making a clicking sound, it's time to replace it.

Note: This method doesn't work with SSDs.

2.4. Errors due to high temperatures

A common cause of a computer displaying a black screen is continuous operation at excessively high temperatures. In this case, the system will automatically shut down to cool down the device. To prevent this and extend the lifespan of your computer, you should clean the machine, apply thermal paste to the CPU, or install additional cooling fans.

2.5. Due to a damaged screen.

If you've checked all the hardware and it seems to be working normally, then it's fairly certain your computer monitor is the problem. In this case, you should find another monitor to replace it with, and check it one last time before planning to have it repaired or replaced.

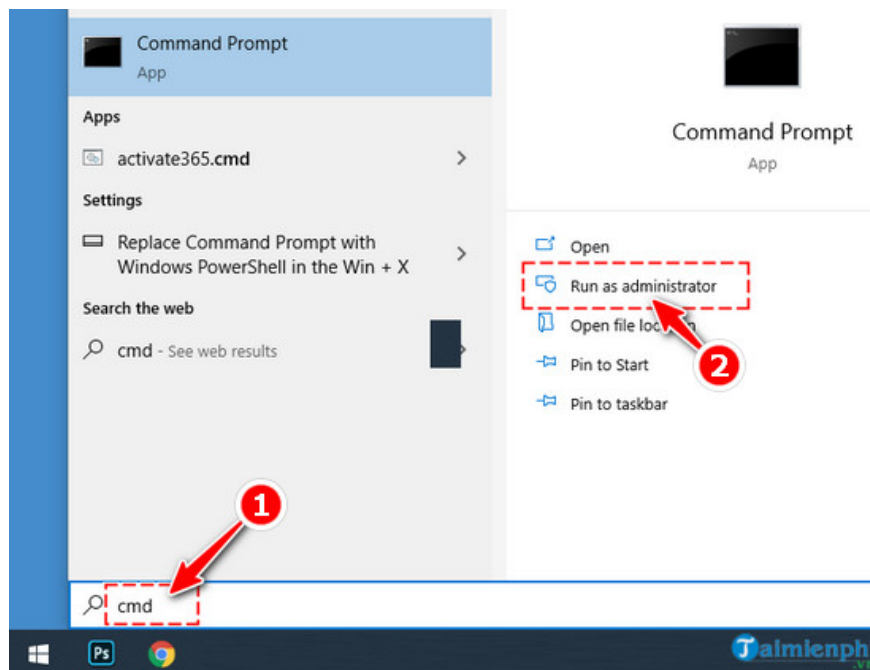
This applies to cases where the computer has successfully started up but then displays a black screen during use.

3.1. Windows license has expired.

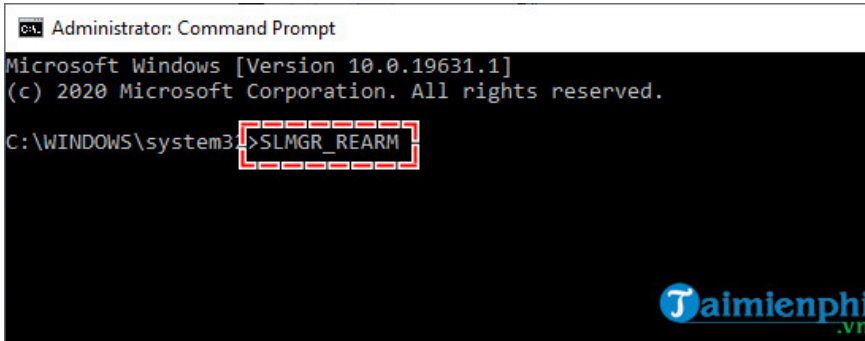
To fix the error message "This copy of Windows is not genuine" on the Windows 7/8/10 screen, follow these steps.

Step 1: Press the Windows key to open the Start Menu. Type "CMD".

Step 2: Select "Run as administrator".



Step 3: In the Command Prompt window, type the command SLMGR_REARM, then press Enter. If the SLMGR_REARM command doesn't run, try the LMGR -REARM or SLMGR /REARM commands.



```
Administrator: Command Prompt
Microsoft Windows [Version 10.0.19631.1]
(c) 2020 Microsoft Corporation. All rights reserved.

C:\WINDOWS\system32>SLMGR_REARM
```

The screenshot shows a black Command Prompt window with white text. The title bar reads "Administrator: Command Prompt". The text inside shows the Windows version and copyright information, followed by the command prompt "C:\WINDOWS\system32>". The command "SLMGR_REARM" is typed and highlighted with a red dashed box. A watermark "Taimienphi.vn" is visible in the bottom right corner.

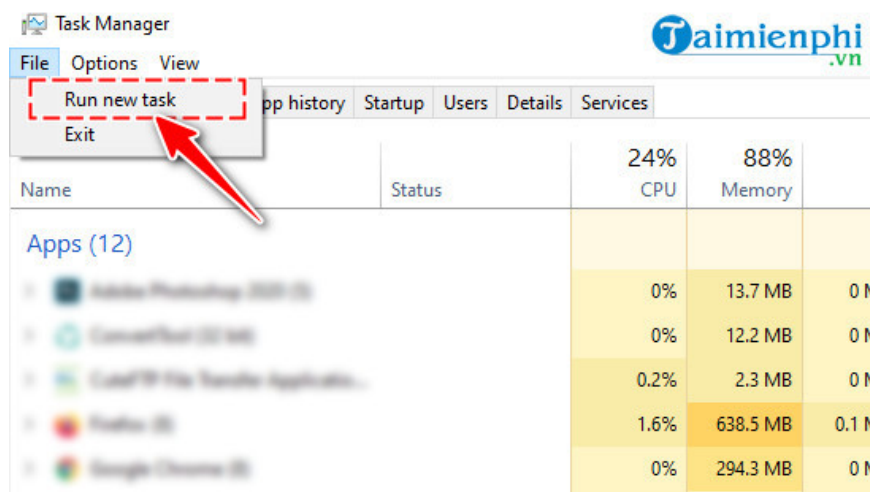
Step 4: When a notification window appears on the screen as shown below, it indicates success. Press OK and restart your computer to complete the process.

3.2. Windows Explorer Errors

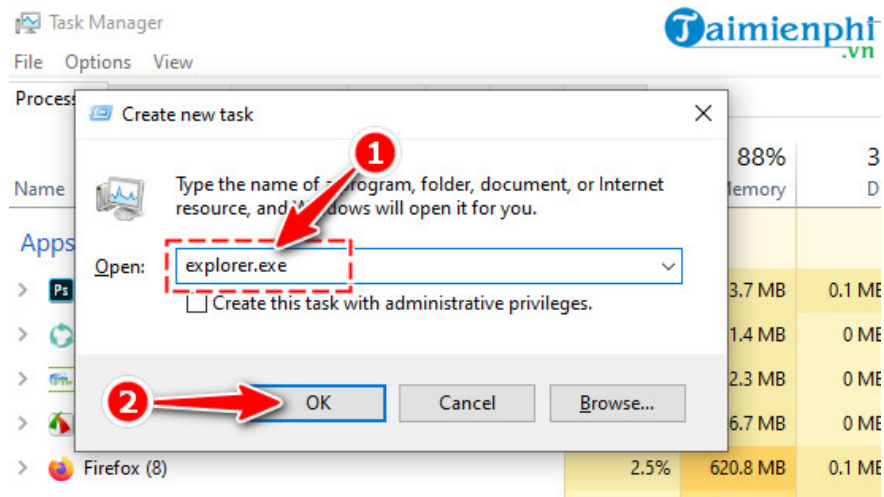
Your computer may be infected with malware or viruses that attack Windows Explorer, causing a black screen error. First, you need to temporarily access **Windows Explorer** again to run antivirus software.

Step 1: Press the **Ctrl + Alt + Del** key combination . Then select Task Manager.

Step 2: In the **Task Manager** window , select the **File** tab . Then select **Run new task**.



Step 3: In the **Run** dialog box that appears, type the command `explorer.exe` and press **Enter** .

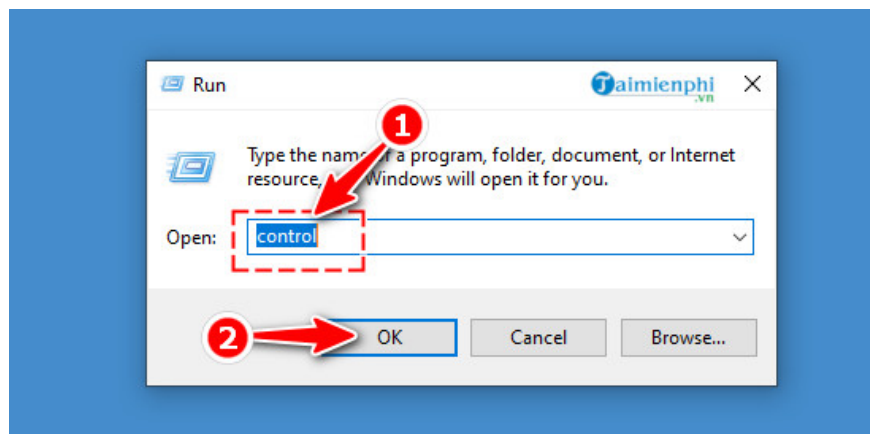


Step 4: After accessing the Desktop, run your antivirus software to completely remove the virus. Finally, restart your computer to check if the black screen error persists.

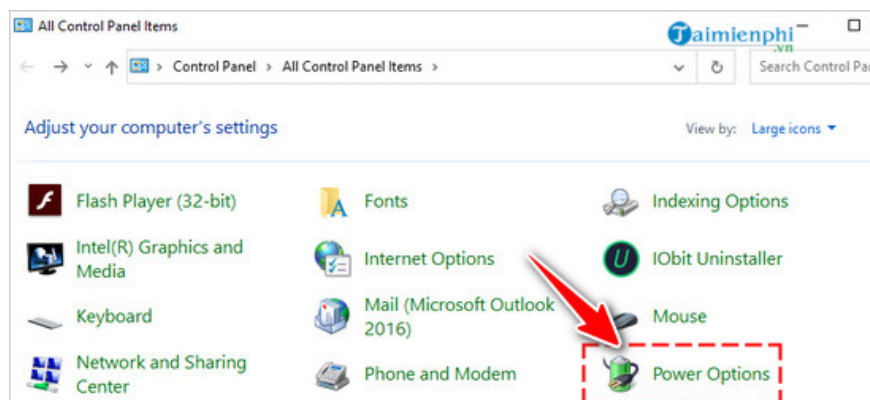
3.3. Because Fast Startup mode is enabled

To disable Fast Startup, follow these steps:

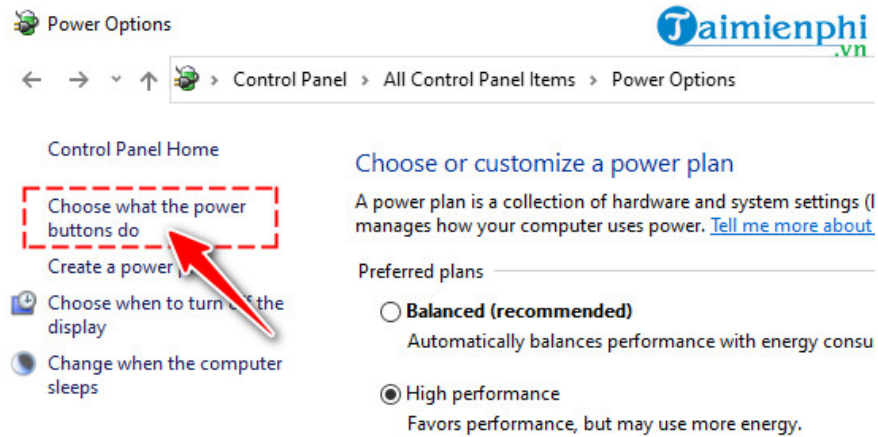
Step 1: Press the Windows + R key combination , type the command **Control** , and select **OK**.



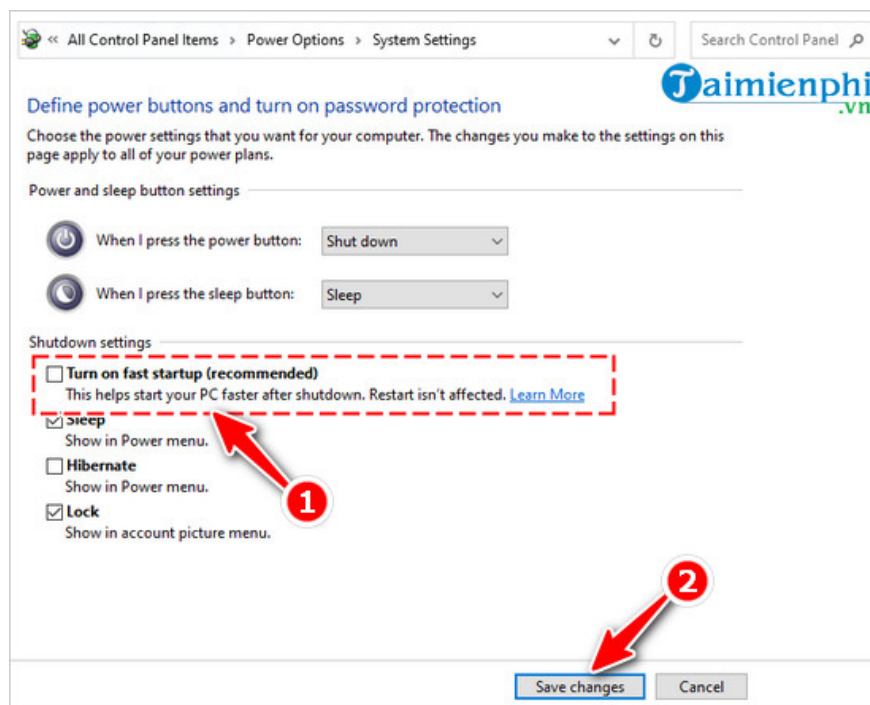
Step 2: Access the **Power Options** section.



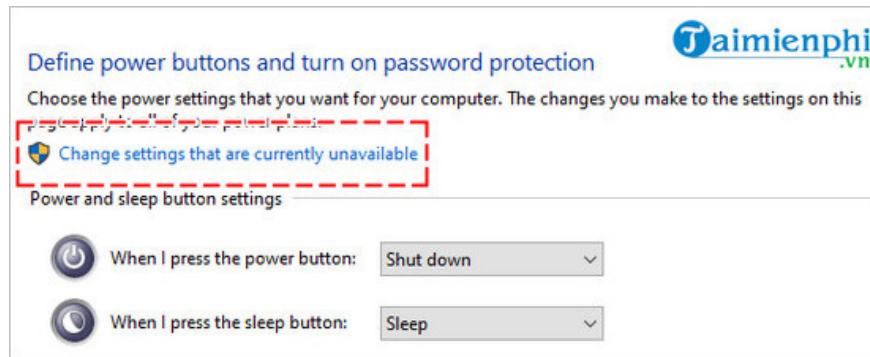
Step 3: Click on the "Choose what the power buttons do" option .



Step 4: Here, uncheck the "Turn on fast startup" option and then select "Save Changes" .



If you see the options grayed out as shown below, simply click on " **Change settings that are currently unavailable**" as shown below.

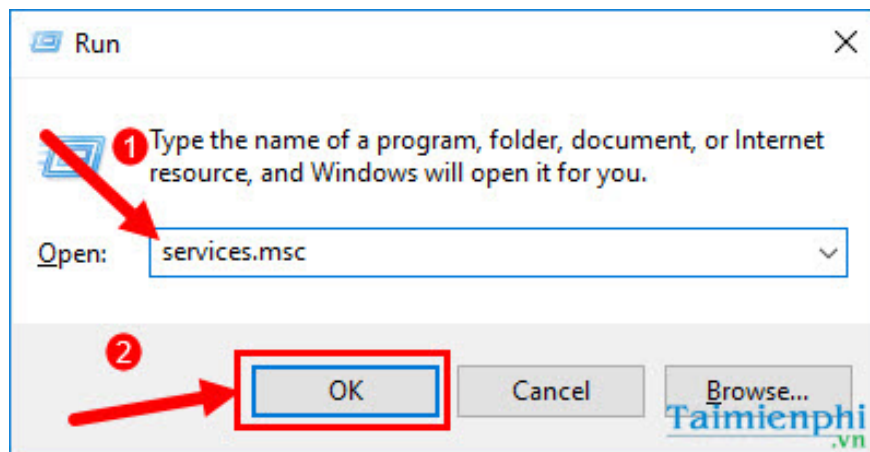


3.4. *Because Windows has received a patch update from Microsoft.*

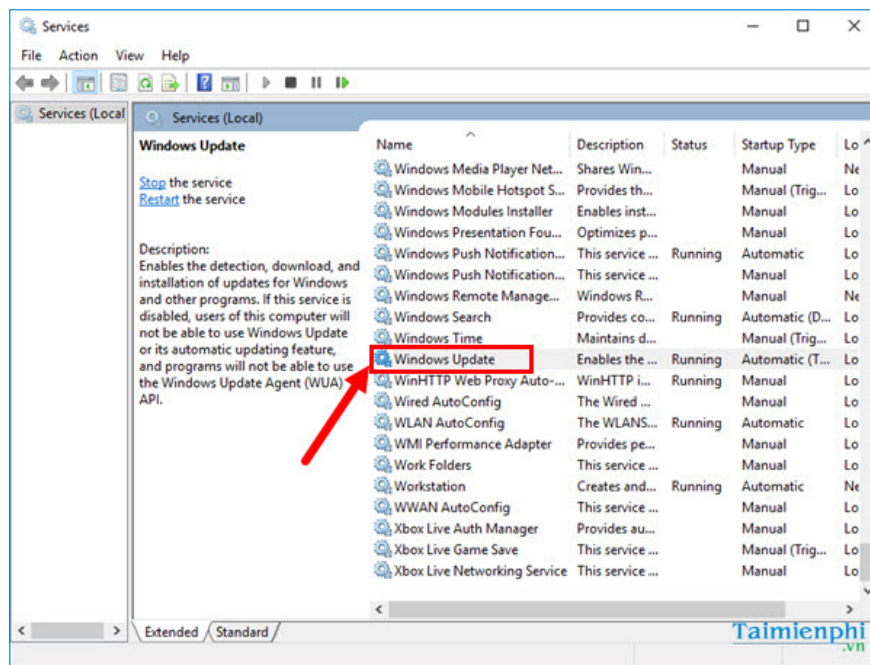
The best way to fix this is to turn off automatic updates. Disabling Windows' automatic update function may prevent your computer from receiving the latest patches and bug fixes from Microsoft, which could lead to various errors.

*** For Windows 10**

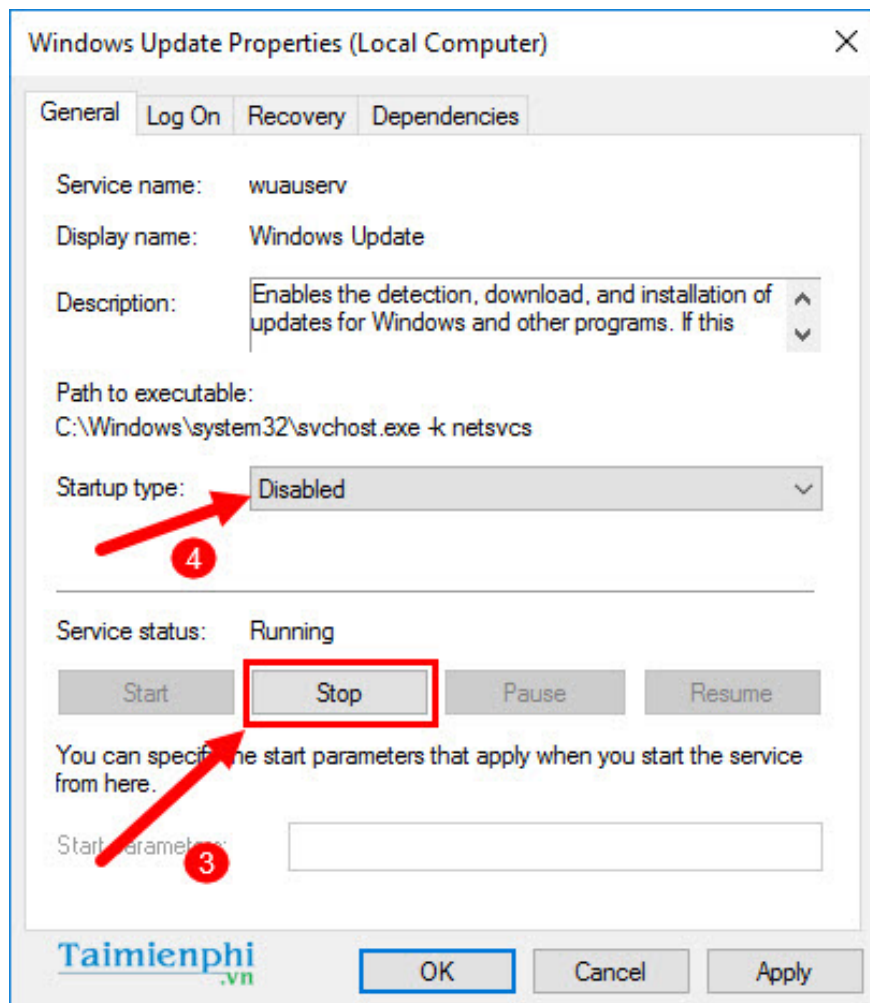
Step 1: Press the Windows + R key combination to open the Run window, then type ' **services.msc** ' into the blank field.



Step 2: In the services window, find the **Windows Update** section .



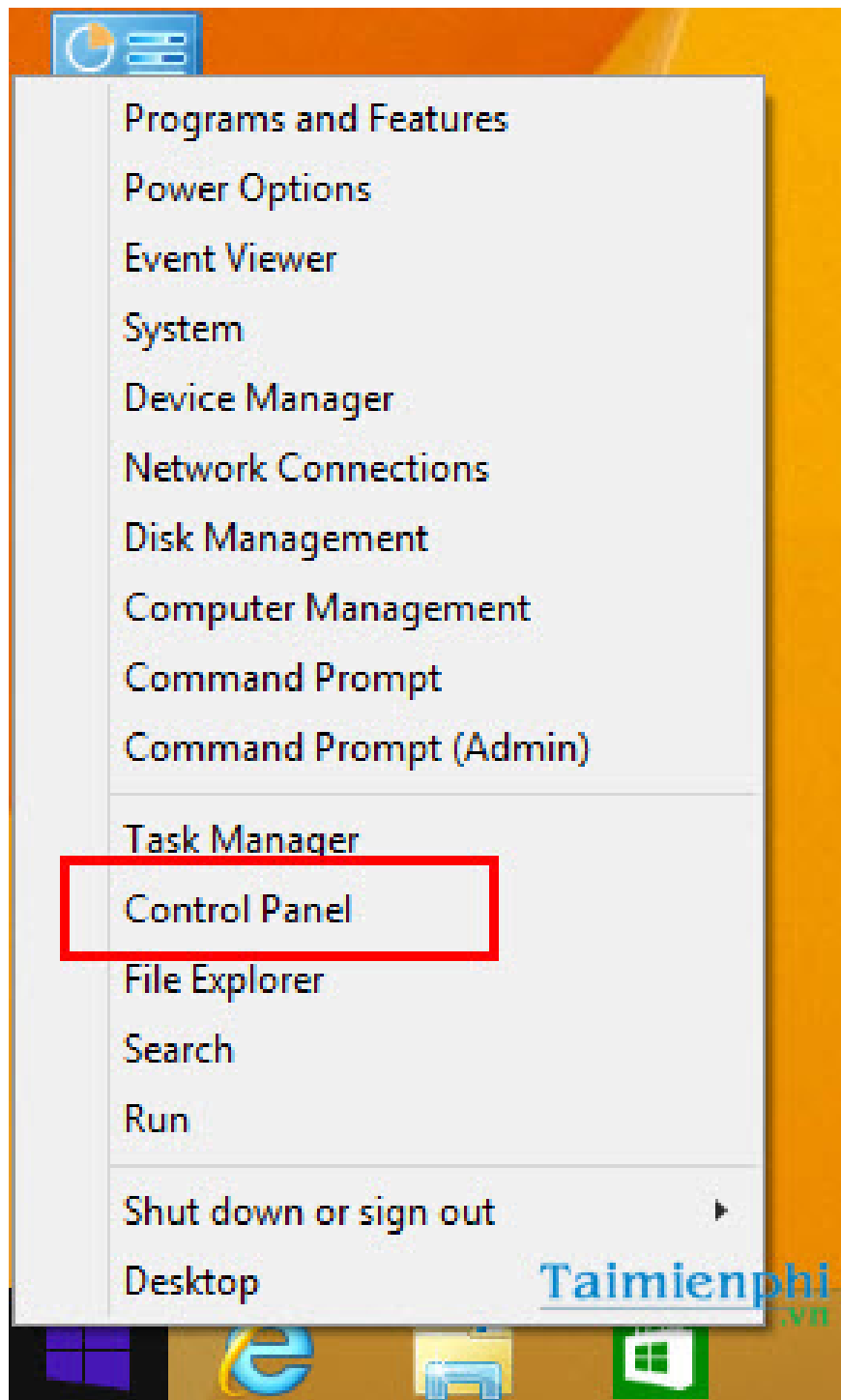
Step 3: In the Windows Update Service window, click Stop to stop the service, then select **Disable** from the Startup Type list.



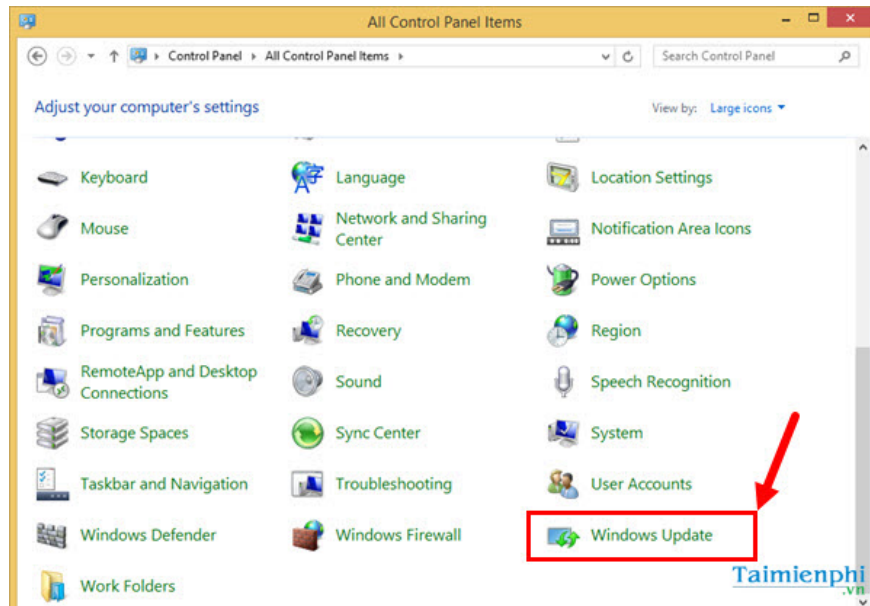
Step 4: Click **OK** , then restart your computer.

** For Windows 8, 8.1*

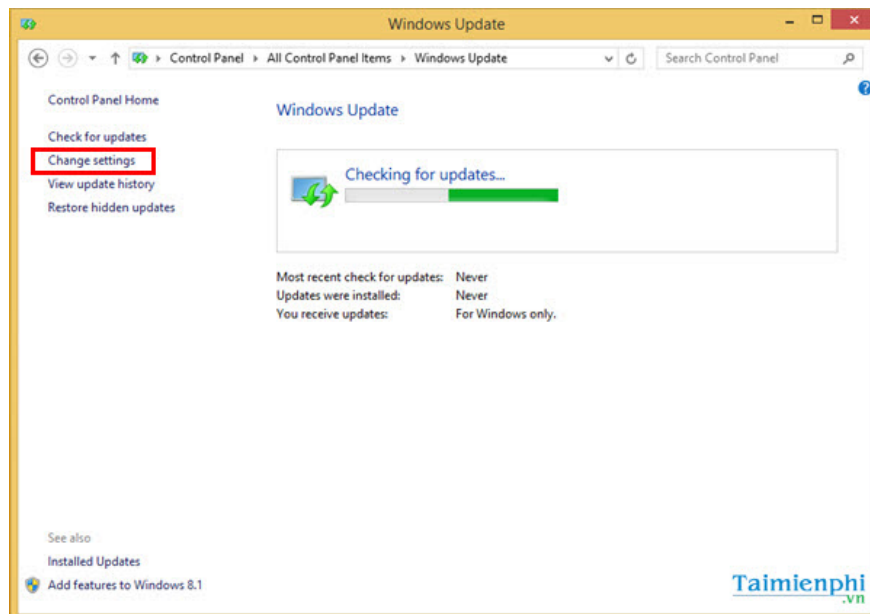
Step 1: Press the **Windows + X** key combination , then select to open **the Control Panel** .



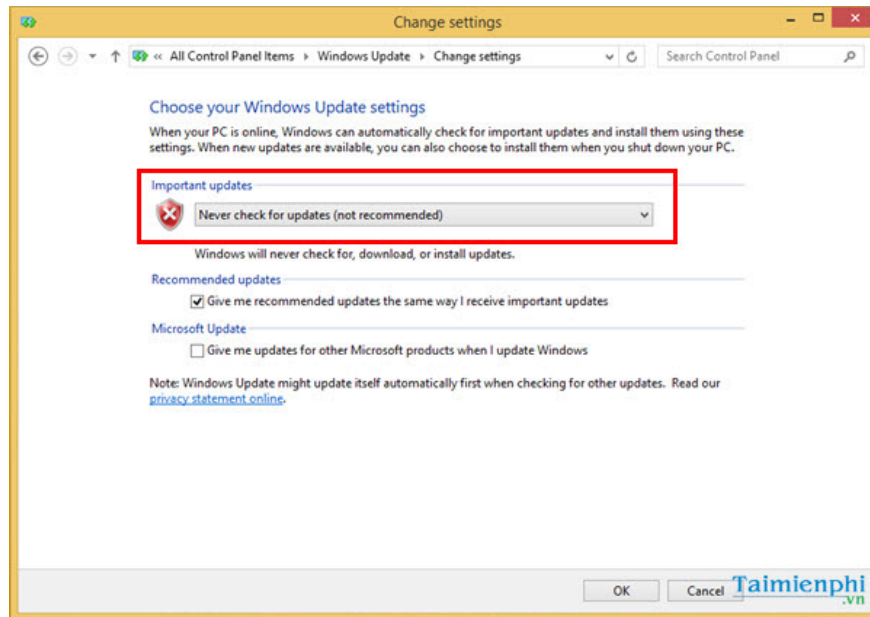
Step 2: Click on the **Windows Update** option .



Step 3: In the Windows Update window , click **Change settings.**



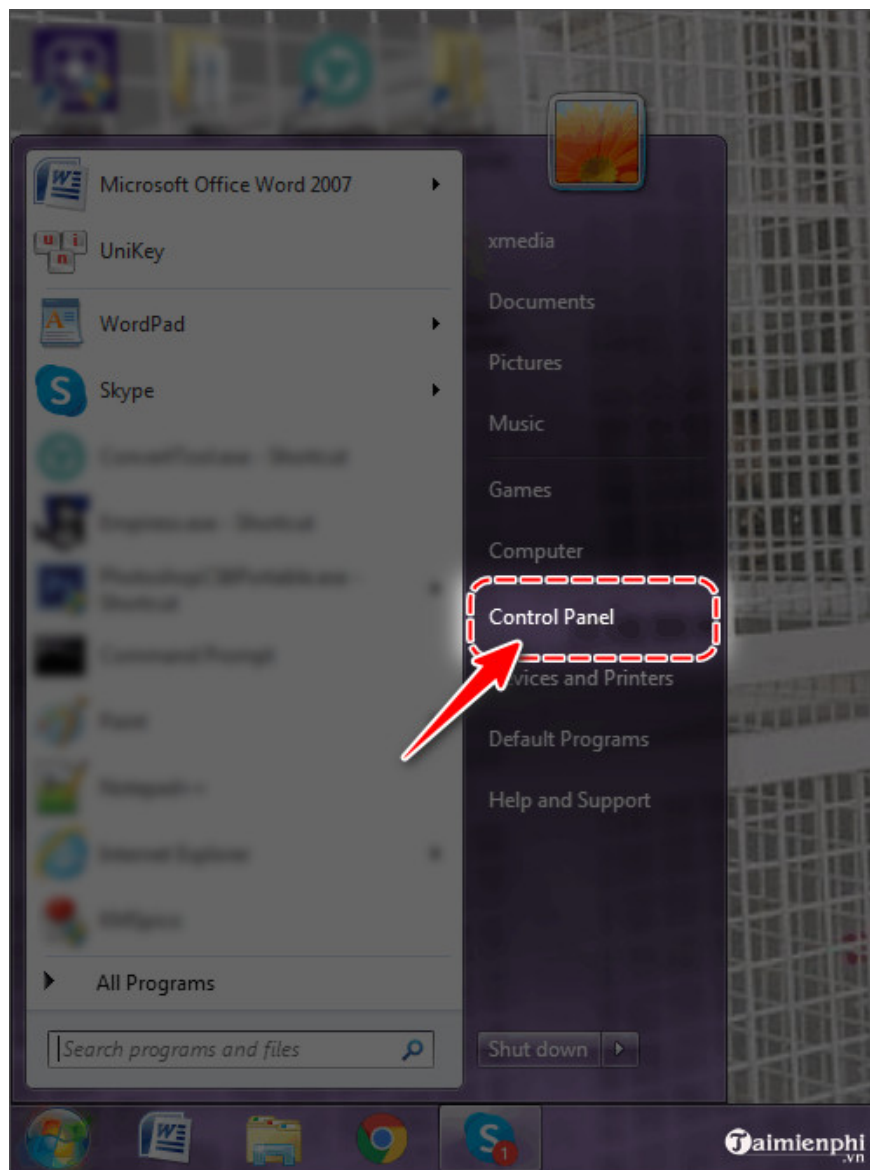
Step 4: Select "Never check for updates (not recommended)" in the "Important Update" section , then click **OK .**



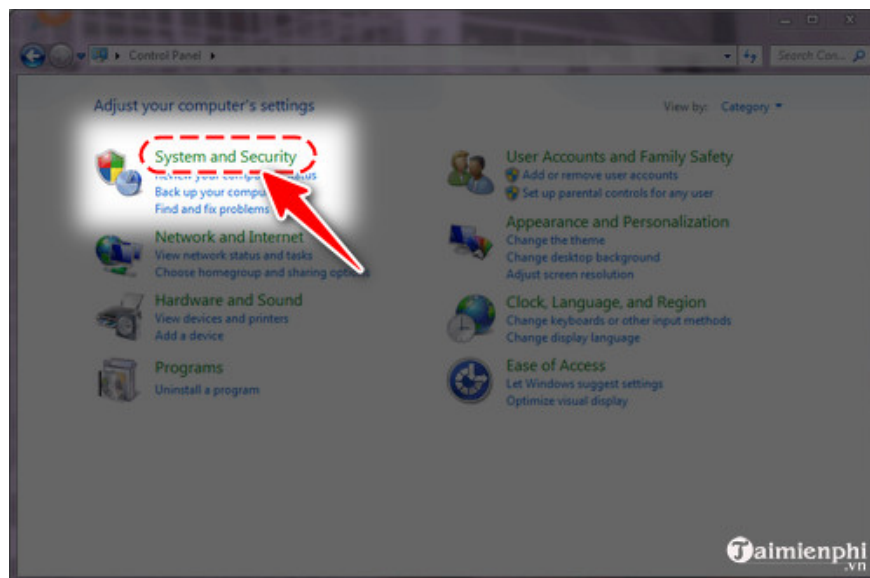
Step 5: Restart your computer and check the problem.

*** For Windows 7**

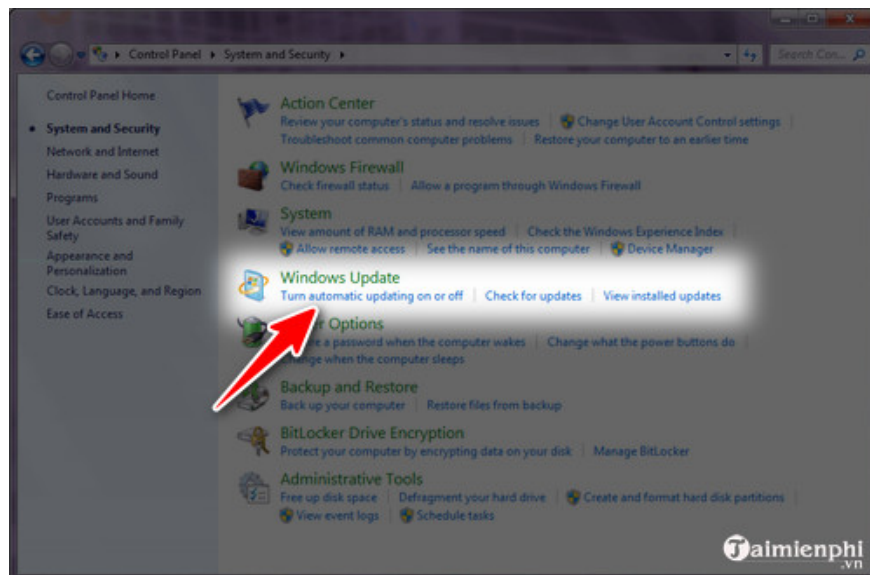
Step 1: First, go to the **Control Panel**.



Step 2: Next, click on **System and Security** .

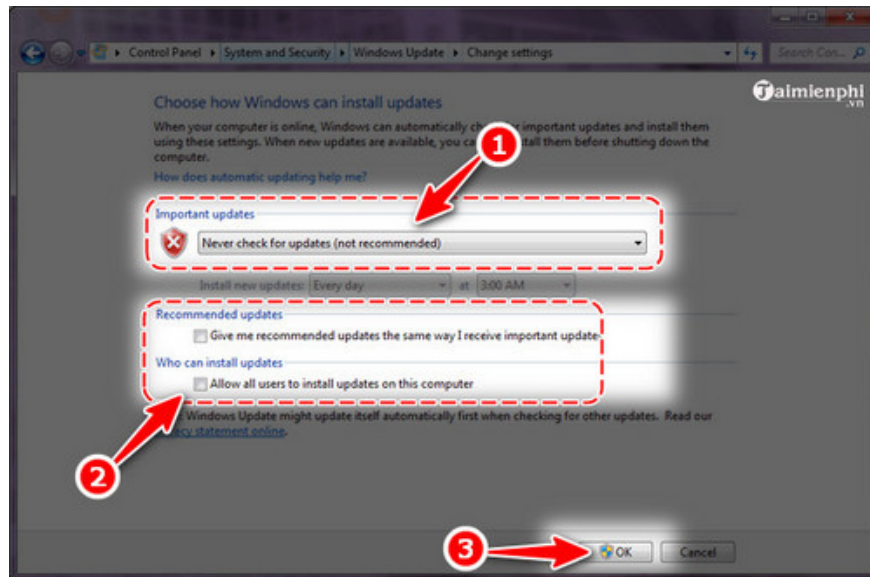


Step 3: Select the option "Turn automatic updating on or off".



Step 4: A new window will appear. Under "Important Updates," click on it and select "Never check for updates (not recommended)".

Under "Recommended updates" and "Who can install updates," uncheck the boxes. Then click **OK** and restart your computer to see the results.



3.5. Due to User Error

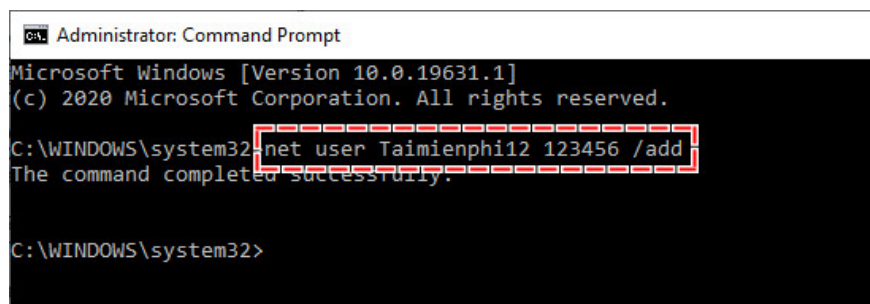
Solution: Create a new user and delete the current faulty user.

Step 1: Open the CMD window on Windows. **Step 2:** Enter the command to create a new user: **net user [Username] [Password] /add**

In this section:

- **Username** : Replace this with the username you want to set.
- **Password** : Set a password for the user account.

For example: We create a new User named Taimienphi12, with the login password 123456:
`net user Taimienphi12 123456 /add`



Step 3: To grant Administrator privileges to the new user, continue by entering the command ``net localgroup administrators [Username] /add`` .

For example: ``net localgroup administrators Taimienphi12 /add``

```
Administrator: Command Prompt
Microsoft Windows [Version 10.0.19631.1]
(c) 2020 Microsoft Corporation. All rights reserved.

C:\WINDOWS\system32>net user Taimienphi12 123456 /add
The command completed successfully.

C:\WINDOWS\system32>net localgroup administrators Taimienphi12 /add
The command completed successfully.

C:\WINDOWS\system32>
```

Step 4: Delete the faulty user account using the command: **net user [UserName] /del**

Example: net user Taimienphi12 /del

```
Administrator: Command Prompt
Microsoft Windows [Version 10.0.19631.1]
(c) 2020 Microsoft Corporation. All rights reserved.

C:\WINDOWS\system32>net user Taimienphi12 123456 /add
The command completed successfully.

C:\WINDOWS\system32>net localgroup administrators Taimienphi12 /add
The command completed successfully.

C:\WINDOWS\system32>net user Taimienphi12 /del
The command completed successfully.

C:\WINDOWS\system32>
```

3.6. *Due to the operating system*

Solution: Reinstall Windows operating system.

If the screen issue persists, you might consider reinstalling Windows on your computer.

- How to install Windows 11
- **How to install Windows 10**
- **How to install Windows 8**
- How to install Windows 7

To determine whether **your computer not displaying an image** is a minor or major issue, you first need to understand the causes, then apply quick troubleshooting tips from Tai Mien Phi to effectively resolve the problem.

You finished reading the article "**Simple Windows black screen fix, while preserving your data.**" edited by the [TipsMake](#) team. We hope this article has provided you with many useful tech tips and tricks. You can search for similar articles on tips and guides. Thank you for reading and for following us regularly.

