

Fix Wifi with red cross and exclamation mark not connecting to Wifi

Instructions to fix the error of Wifi with a red cross and exclamation mark that cannot connect to Wifi, fix the error of not connecting to wifi simply with a few steps.

Wifi is one of the methods to connect to the Internet very handy, without the messy wires that makes Windows devices like laptops very flexible.

However, for some reason, the Wifi icon in the corner of the screen has **an exclamation mark** or **red cross** that makes it impossible to connect, it will definitely be annoying and annoying. Below will be the cause, how to fix this error on a PC / Laptop running Windows.

1. Fix Wifi error with red cross

Wifi red crossed out error due to the Wifi function is disabled

Or rather, your device has turned off Wifi with a hard key (physical key).

Try turning on Wifi again with the following keys, depending on your laptop type, press different key combinations. Here are ways to enable Wifi on a laptop:

1. Laptop Asus: Fn + F2
2. Dell Laptop: Fn + F2
3. Laptop Lenovo: Fn + F5 (Lenovo ThinkPad with physical key on the left side of the body)
4. Acer Laptop: Fn + F5
5. Laptop Sony - Vaio: Use separate physical keys on the left / right side or the front

* **Note:** The above keys are not 100% correct, newer laptops can change this physical key. However, you just need to remember 'find the key with the wifi icon' and try pressing to enable the Wifi feature when the red cross error occurs.

Wifi red slash error due to Driver not installed or outdated

Driver is essential software that helps the operating system and hardware communicate with each other, if your Wifi card Driver is too old, it will lead to a lot of errors. Here are the fastest ways to install Wifi Driver.

Install / update Wifi driver automatically

Download the Easy Driver app, extract it and click install. The software will automatically complete the entire installation process, then restart your computer to check the results.

Install / update Wifi driver manually

This way is quite complicated, each type of computer is different, the Driver is different, so it is quite difficult to find the right driver to install.

However, if the above Easy Driver does not help you fix this error, then we are required to manually install the Wifi Driver.

Although a bit difficult, but if you know what your wifi card driver is using, it is very easy.

Wifi driver for PC desktop:

Desktop computers have almost no integrated Wifi card, usually will use removable USB Wifi or discrete network cards later, here are popular drivers from Totolink.

1. TL-WN823N V4
2. TL-WN725N V3
3. TL-WN881ND V2
4. TL-WN722N V3

If your computer is not using these types of USB / wifi card then find driver on google with the syntax: Driver Card / USB wifi X (where X is the name of your wifi card / usb).

Wifi driver for laptop laptops:

I have been around for a while and realize that the Wifi Laptop card is very diverse, so it is impossible to list them all here. Here will be tips to help you quickly find the right wifi driver for your laptop.

You can find your driver card with keywords on Google with the following steps:

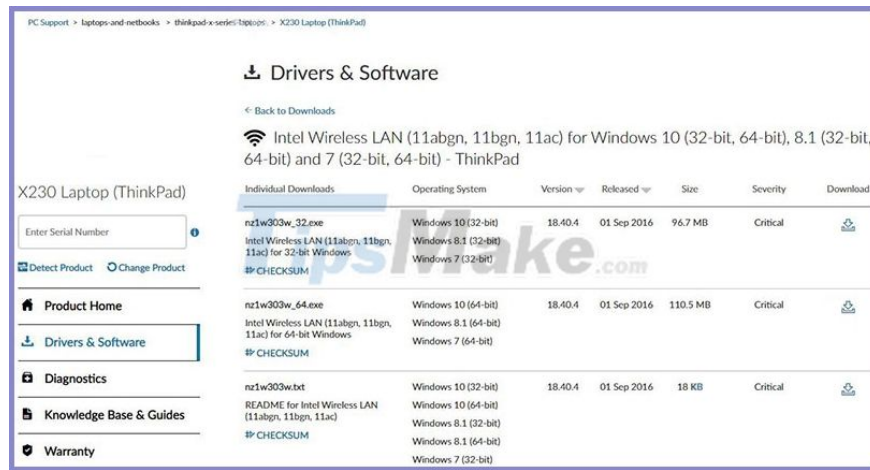
Step 1: Go to Google, enter the following syntax to find the Wifi card driver:

Inside:

1. A is the name of the laptop series
2. B's name is sample
3. C is the codename (life) of the computer

Example : Driver Wireless laptop lenovo thinkpad x230

Step 2: The results returned, you should click on the first page, we have a complete and detailed Driver list for the correct type of computer.



Step 3: Choose the correct version with your configuration / operating system and download it. If you do not know how to check the configuration see this article.

Step 4: Install Driver. These driver packages install with a very simple operation, double-click and then keep clicking **Next** until finished.

Finally restart the laptop to see the results.

2. Fix Wifi error with exclamation point error

Other than the red dot error, most of these errors are caused by your network provider or Wifi transmitter. Here are the fixes.

The first way: Reset the Modem / Router Wifi

Maybe because too many devices connect to the same Wifi hotspot, causing the same IP or overloading the transmission line, causing errors, or simply your Wifi transmitter works for too long without rest.

Now all you need to do is either restart the Wifi transmitter by pressing the power off button on the back, or unplug it and wait for 30 seconds to 1 minute. You plug in and turn on the power button again -> Normal use.

Method 2: Set a static IP for the device

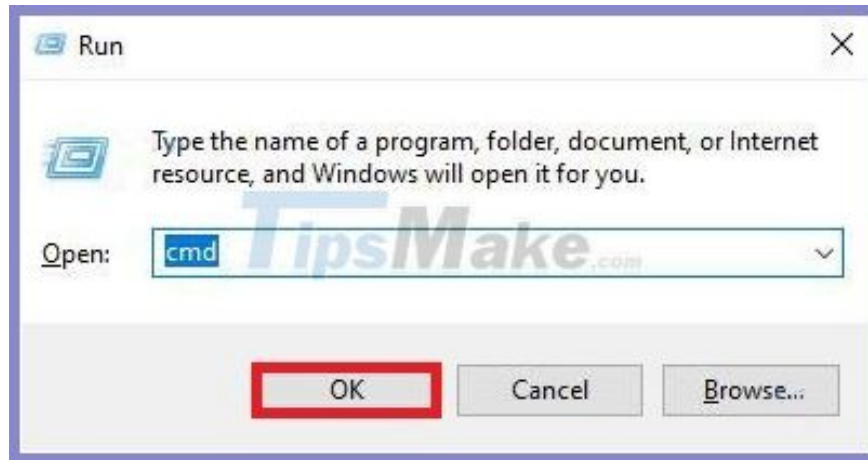
In the article what an IP address is, I mentioned in great detail the benefits of setting a static IP. In it also instructs how to change static IP very quickly for many different types of devices, including computers and phones, follow the steps to set up static IP to fix the wifi error with exclamation mark. .

Method 3: Grant new dynamic IP to the device

Finally try to change the dynamic IP for your device with these simple steps:

Step 1: Key combination Windows + R

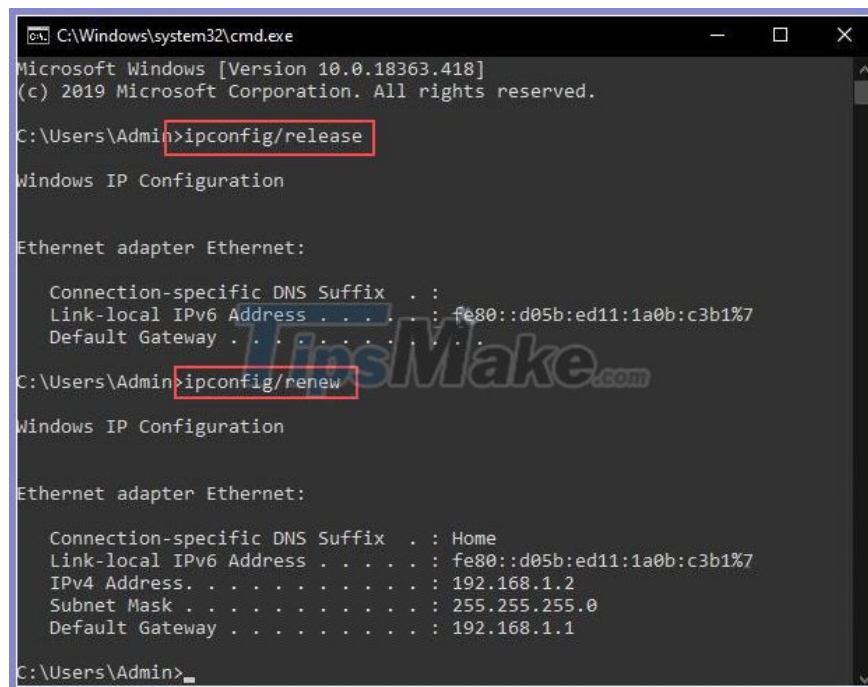
Enter: *cmd*



-> press **Enter** or **OK** .

Step 2: A command *prompt* window appears, enter the following command: *ipconfig / release*

Step 3: Enter the command line: *ipconfig / renew*



Then wait a few seconds to see the results.

*** Note:** After performing all 3 steps above and still having an exclamation point error, 100% of the connection of the Internet service provider has encountered a problem. Contact your network provider for testing and repairs.

3. Conclusion

Above is the fastest way to fix the Wifi with red cross and exclamation mark not connecting to Wifi. Hope with these methods will help you fix the internet connection error on your computer. Good luck!

You finished reading the article "**Fix Wifi with red cross and exclamation mark not connecting to Wifi**" edited by the [TipsMake](#) team. We hope this article has provided you with many useful tech tips and tricks. You can search for similar articles on tips and guides. Thank you for reading and for following us regularly.
