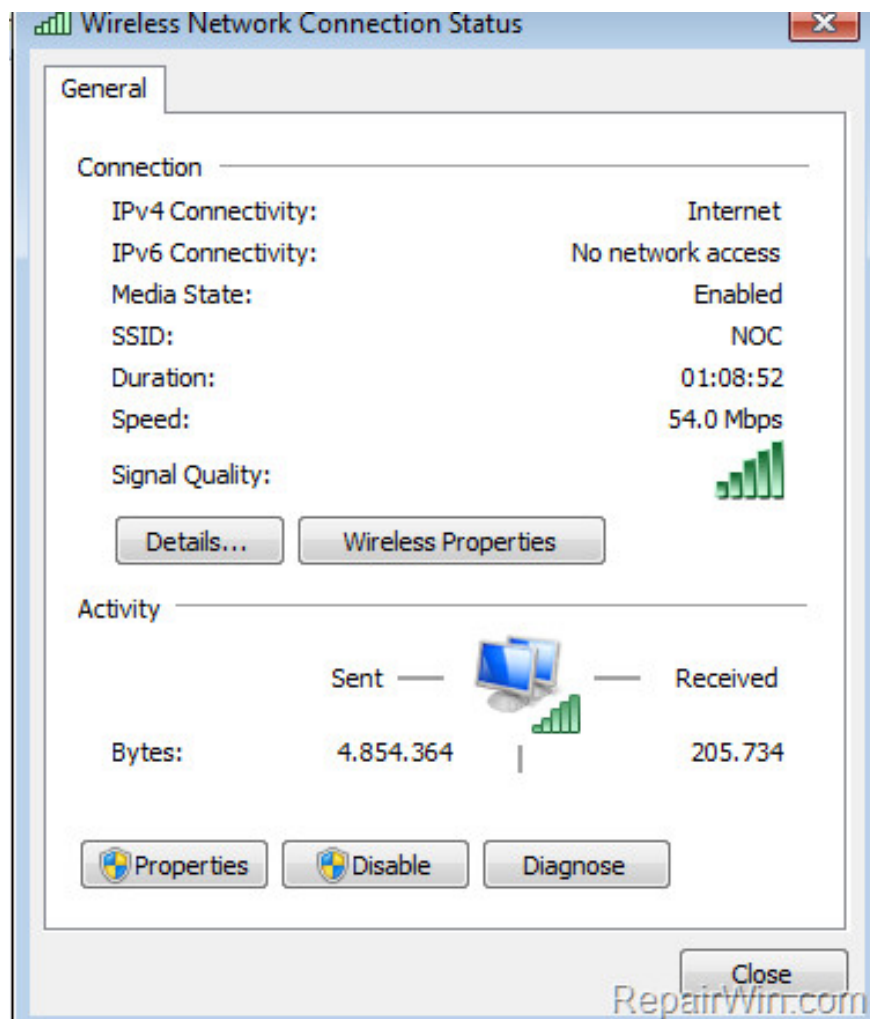


Fix Wifi error disconnected on Windows 10, 8, 7 and Vista

Have you ever had a laptop disconnect from your wireless network continuously? Or after upgrading the computer to Windows 10 (or Windows 8, 8.1) operating system, your Wifi connection is disconnected.

In most cases the cause of the Wifi disconnection is after updating a new Windows version (for example, from Windows 8 to Windows 10), or because the Wi-Fi card settings are incorrect.

If you are faced with Wifi connection error or connection limit error, you can refer to some solutions to fix errors in the following article of Network Administrator.

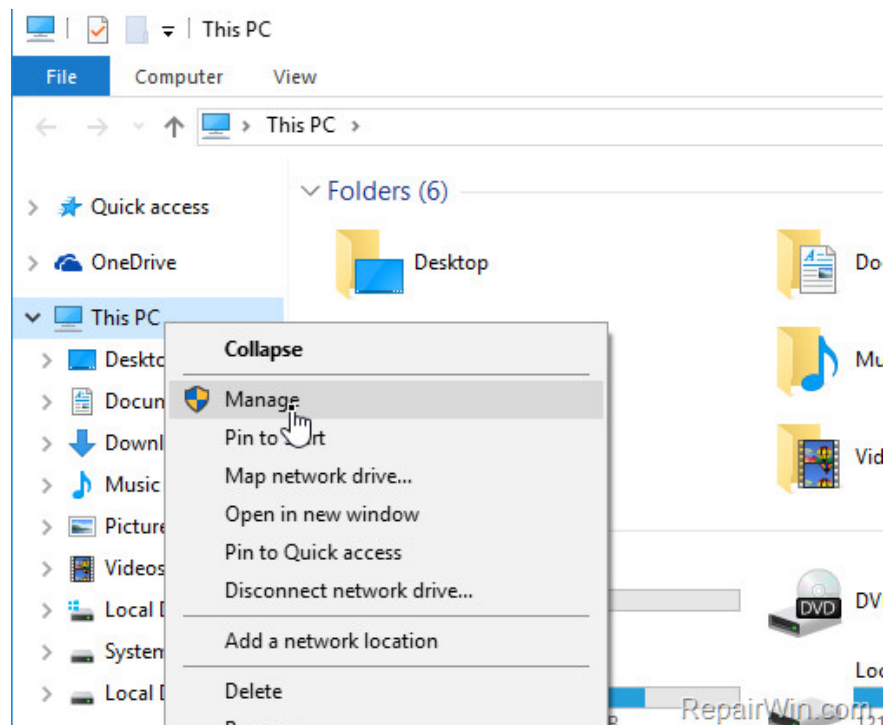


1. Fix the wireless network card disconnection error on Windows 10, 8.1, 8, 7 and Vista

Edit Power Management Settings

Step 1. Open Windows Explorer.

Step 2. On the Windows Explorer window, right-click the Computer icon (This PC), then select **Manage** .

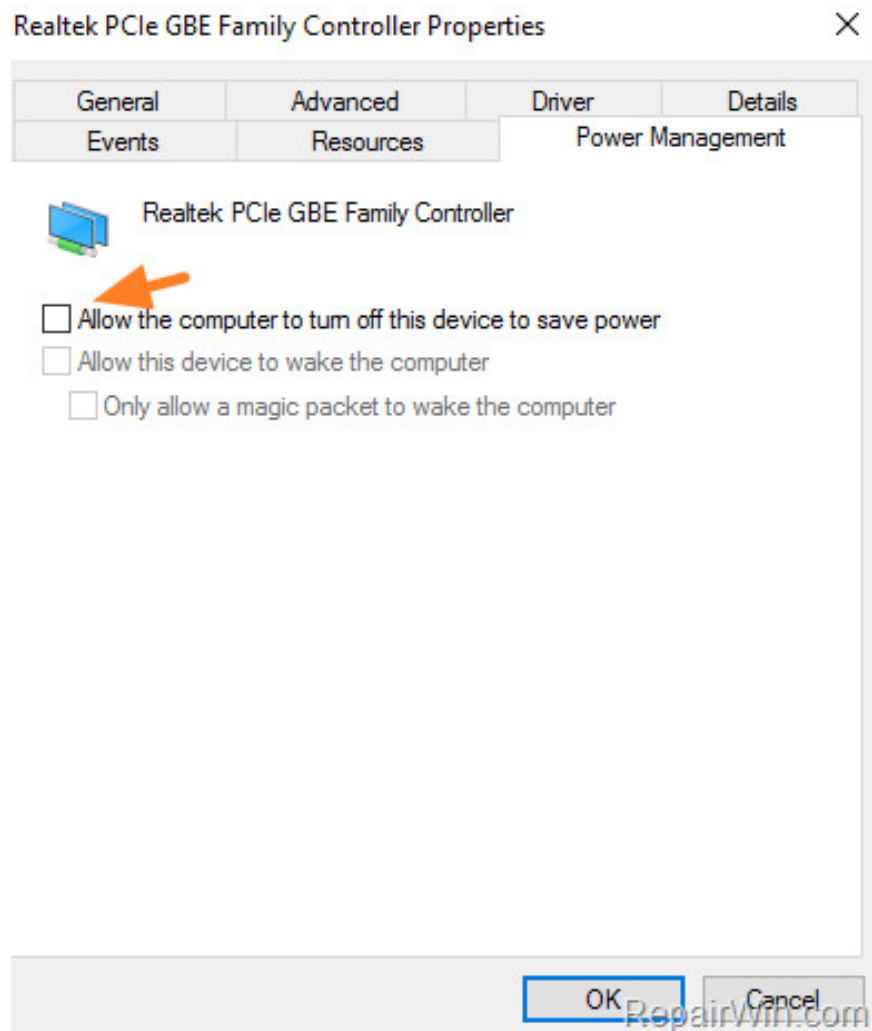


Step 3. Select **Device Manager** in the left pane and expand **Network Adapters** .

Step 4. Double-click on Wifi adapter, to open the **Properties** window.

Step 5. On the **Properties** window, find and click the Power Management tab.

Step 6. Uncheck the ' *Allow Windows to turn off this device to automatically save power* ' section.



Step 7. Close all windows and check if the error is still there.

Step 8. If the Wifi error still disconnects, follow the steps below.

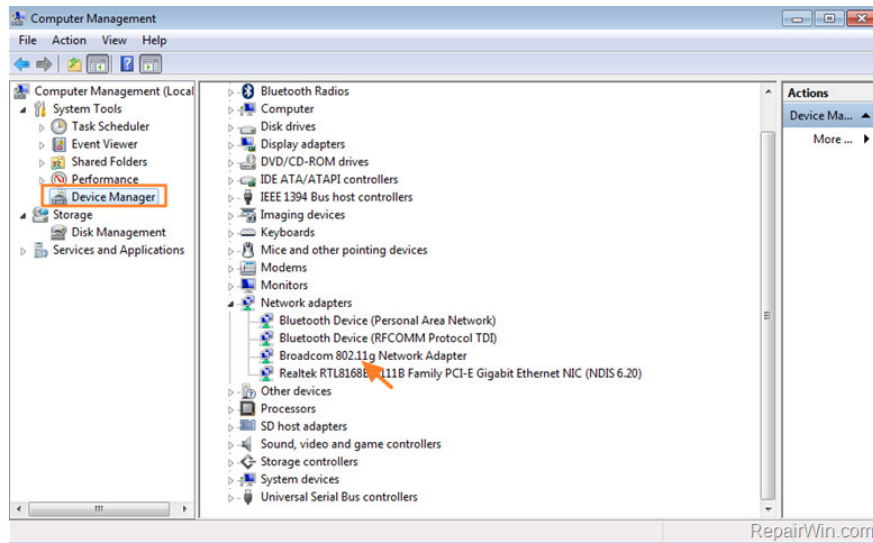
Disable 802.11n (if Wifi network card supports)

The **802.11n Wifi standard** (also called Wireless N) is designed to improve 802.11g Wifi standards, using multiple wireless signals and antennas instead of one. But the use of multiple signals can interfere / 802.11b / g networks nearby and in some cases cause the WiFi disconnection.

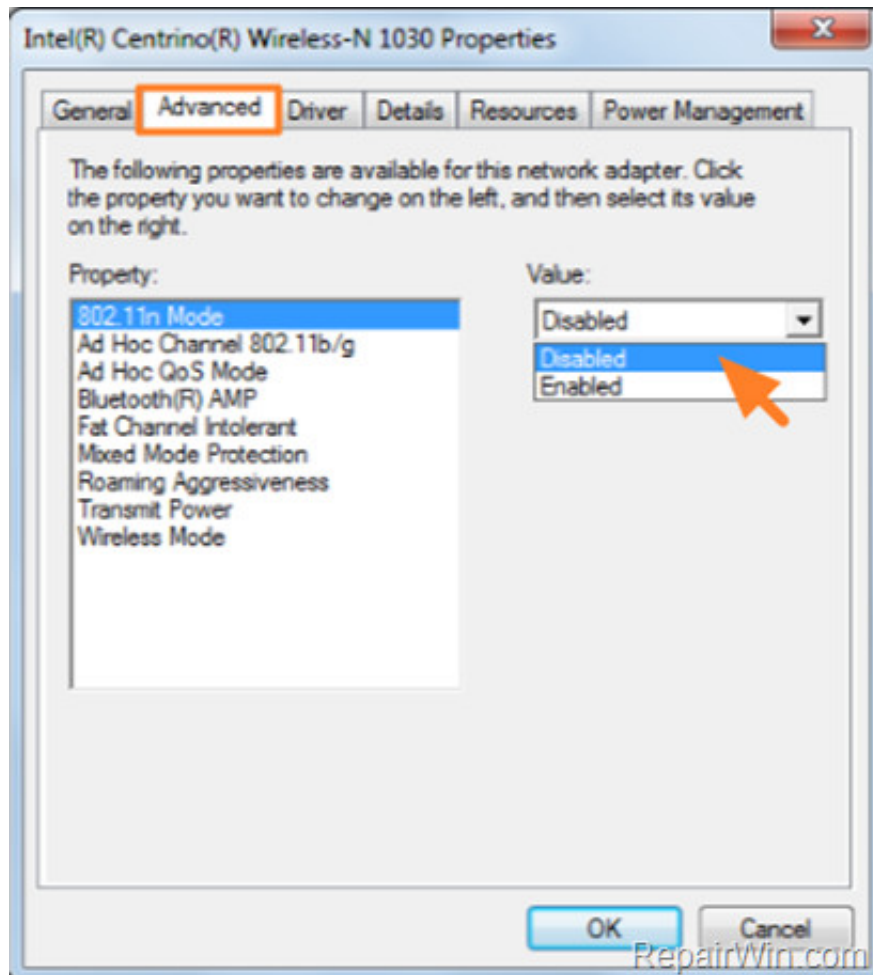
To disable 802.11N (wifi standard), follow the steps below:

Step 1. Open Device Manager and expand **Network Adapters** in the right pane.

Step 2. Double-click the Wireless adapter to open the **Properties** window.



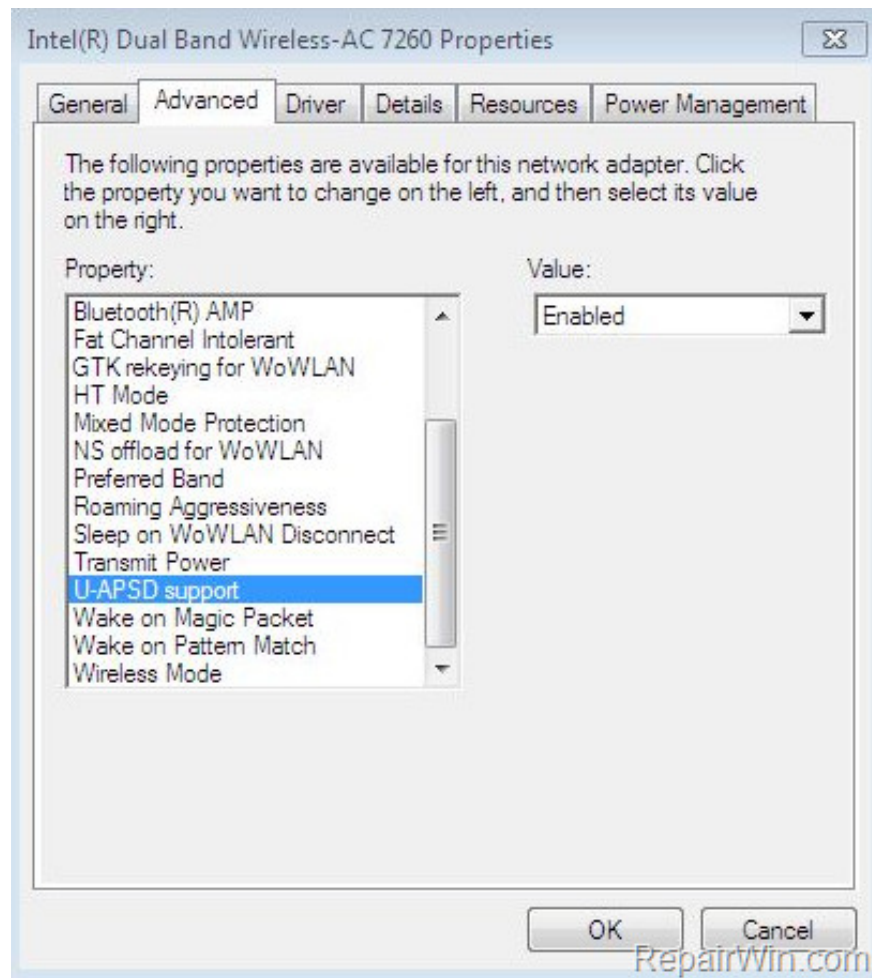
Step 3. On the **Advanced** tab, select **802.11n Mode** and select **Disabled** .



Step 4. Click **OK** to save the changes and close all windows.

Add more:

In addition, you can disable the uAPSD (Unscheduled Automatic Power Save Delivery) feature if your wireless network card supports it.

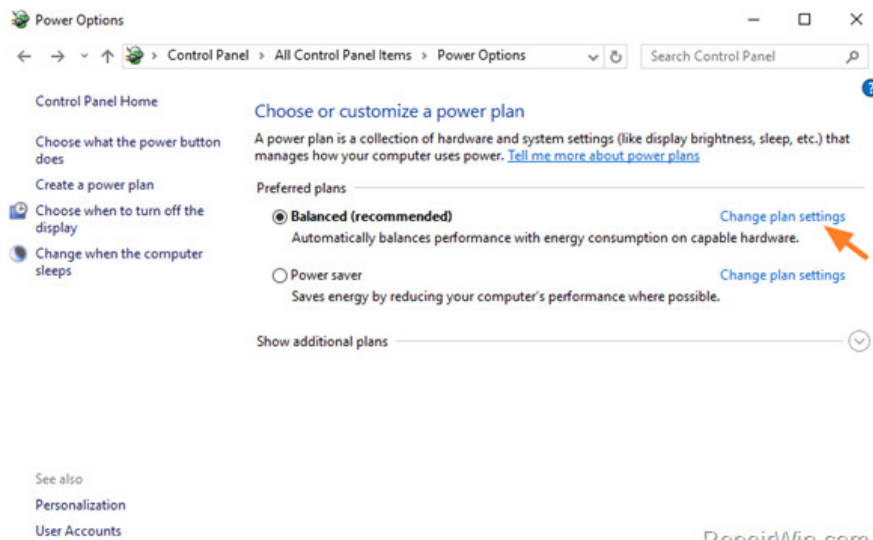


Step 5. If Wifi still disconnects, proceed to step 3 below.

Disable the Power Saving feature

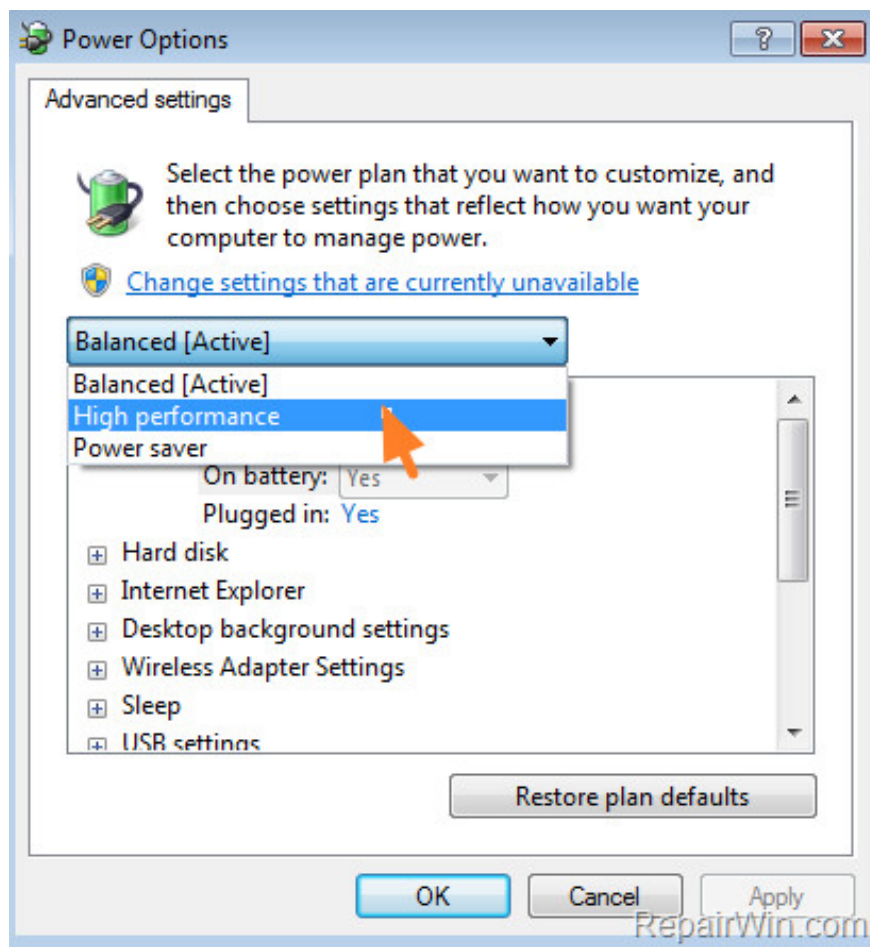
Step 1. Open Power Options from Control Panel.

Step 2. In the Power Options window, find and click **Change plan settings** .

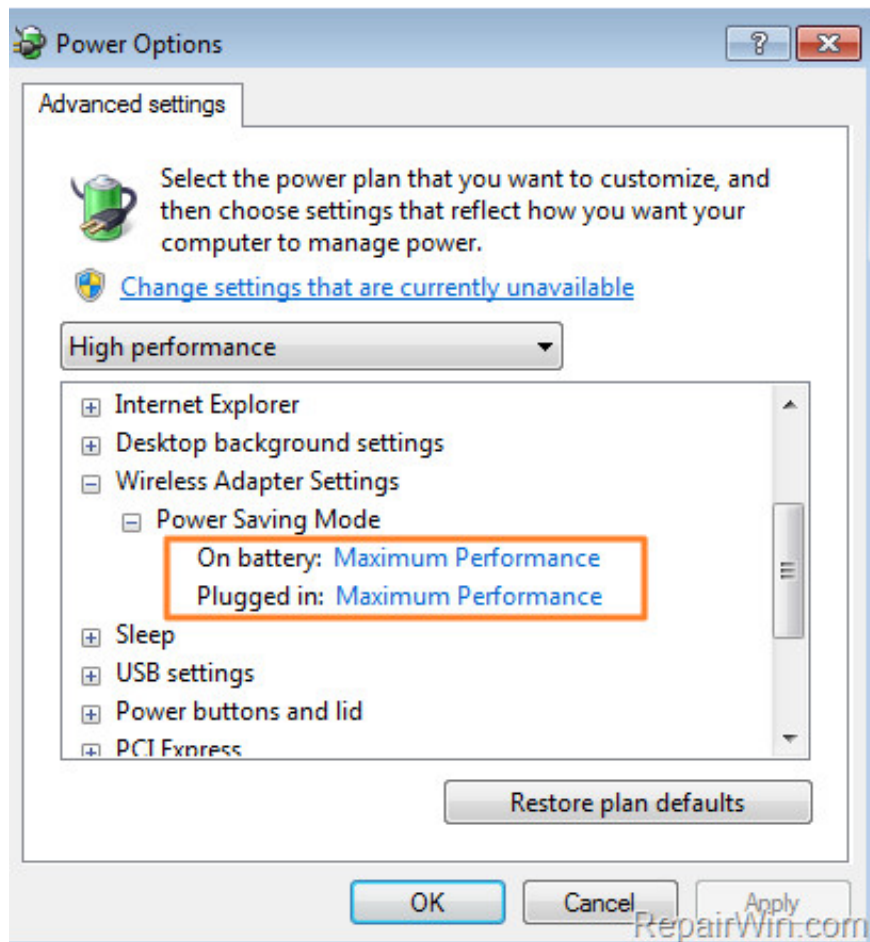


Step 3. Next select **Change Advanced Power Settings** .

Step 4. Set the Power plan to **High Performance** .



Step 5. Scroll down to **Wireless Adapter Settings** and set **Power Saving Mode to Maximum Performance** .



Step 6. Click **OK** to apply the change.

2. Some other solutions

In some cases the Wifi card may be disconnected after you update (update) the driver or update Windows. In this case:

Step 1. On the Device manager window, select Bluetooth adapter and disable it.

Step 2. Restore (restore) Windows to the previous version and check the stability of the Wifi connection.

Step 3. Uninstall the wireless network card driver, then restart the computer. After booting, proceed to reinstall the latest driver version for Wifi card on the manufacturer's homepage.

Step 4. Disable Windows Firewall. And if you have a third-party antivirus application or firewall installed, try temporarily disabling or uninstalling these programs on the system.

Step 5. Try another wireless card.

Good luck!

You finished reading the article "**Fix Wifi error disconnected on Windows 10, 8, 7 and Vista**" edited by the [TipsMake](#) team. We hope this article has provided you with many useful tech tips and tricks. You can search for similar articles on tips and guides. Thank you for reading and for following us regularly.

