

Fix the 'Unknown, Not initialized' error on Windows 10.

If you're facing the 'Unknown, Not initialized' error on your Windows 10 computer, please refer to the article below to learn how to fix this error.

Recently, TipsMake has received several reports from users stating that after installing a new SSD on their computer, the newly installed drive does not appear in File Explorer.

After opening Disk Management to check, the new SSD appeared, but when right-clicking on the unallocated space for the SSD to partition it, all options were grayed out. Later, an error message appeared on the screen: "**Unknown, not initialized**".



In the article below, TipsMake will guide you on how to fix the "Unknown, Not initialized" error on Windows 10.

Fix the "Unknown, Not initialized" error on Windows 10.

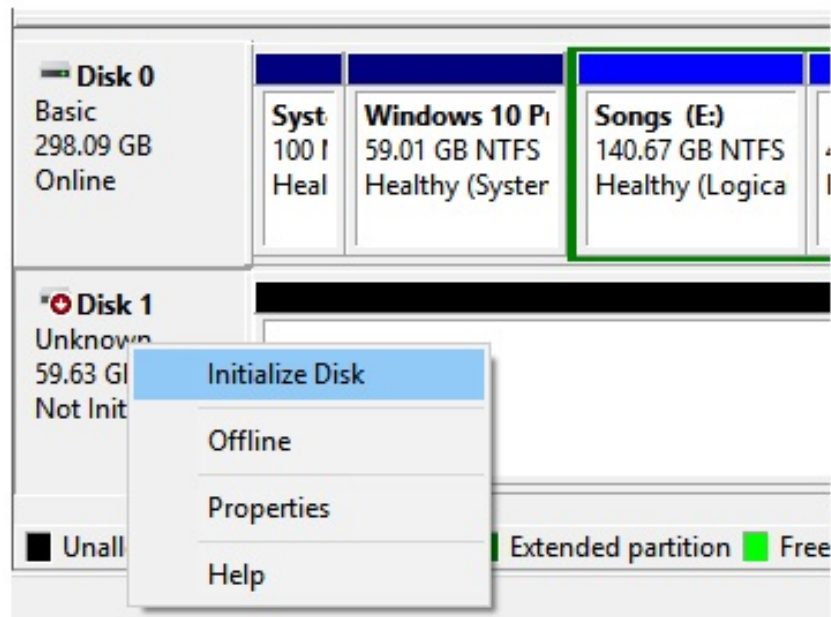
Typically, to fix the "Unknown, Not initialized" error on Windows 10, the solution is to initialize the drive.

Note: Before performing drive initialization, please be aware that the process will erase all data. In other words, initializing a drive will wipe all data on it. Therefore, if you have important data, you may want to take it to a data center or use third-party tools to back it up before performing the initialization.

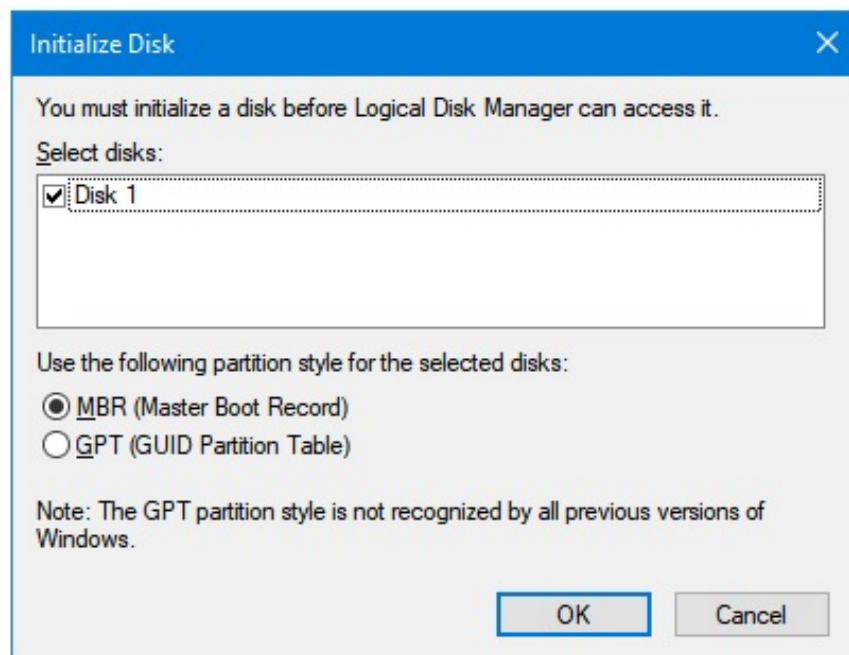
Initialize the drive

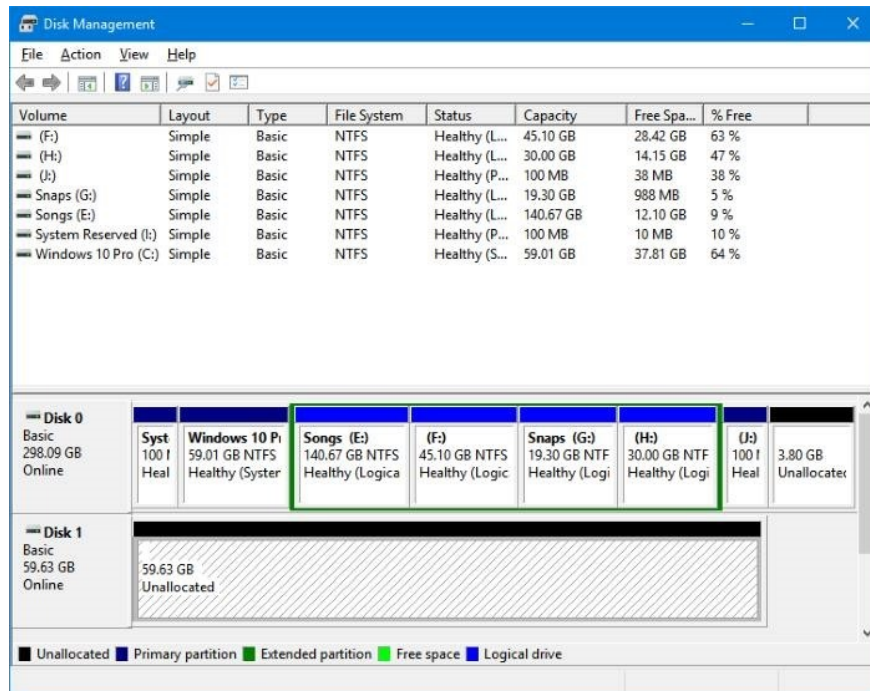
Follow the steps below to initialize the new drive and fix the "Unknown, Not initialized" error:

Step 1: Open Disk Management. Right-click on the "Unknown, not initialized" error message and select "Initialize Disk" .



Step 2: A "Initialize Disk" dialog box will appear on the screen. Ensure your drive is selected, then choose the partition type as **MBR** (Master Boot Record) or **GPT** (GUID Partition Table), and click **OK** to complete the process.





If you're deciding between GPT and MBR, TipsMake recommends choosing MBR, because you can still convert MBR to GPT if you wish.

The article above, TipsMake has just guided you on how to initialize a drive to fix the "Unknown, Not initialized" error on Windows 10. You can also refer to how to **fix the "USB Device Not Recognized" error**, where the computer doesn't recognize the USB drive, here. If you have any questions or need clarification, please leave your comments in the comment section below the article, and TipsMake will answer your questions as soon as possible.

You finished reading the article "**Fix the 'Unknown, Not initialized' error on Windows 10.**" edited by the [TipsMake](#) team. We hope this article has provided you with many useful tech tips and tricks. You can search for similar articles on tips and guides. Thank you for reading and for following us regularly.