

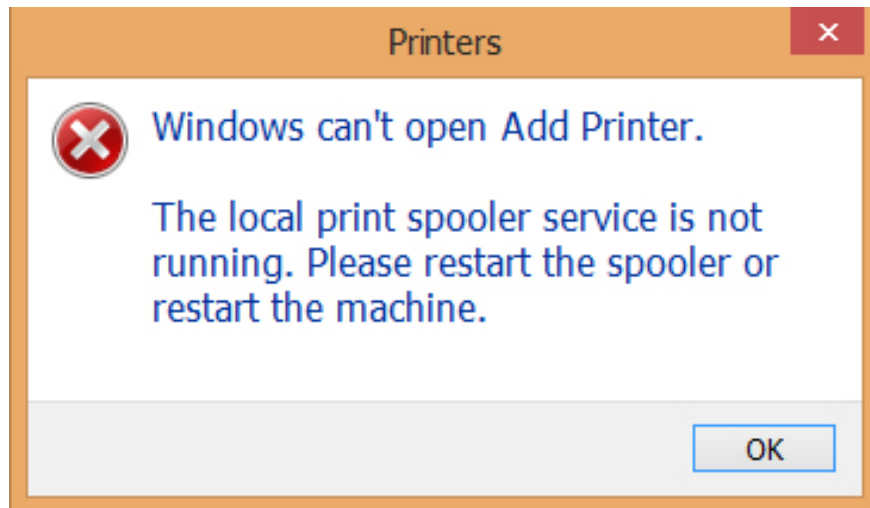
# Fix the spooler print service service not running on Windows 10, 8.1, 7

During the installation of the printer on a Windows 10, 8.1 or 7 computer, you will sometimes get an error with the message line The print spooler service is not running. So, how do we handle this error?

Installing printers with many people will not be difficult, especially for those who know about technology. But sometimes during the installation process, you will encounter some errors that cause the installation process to stop. For example, the error message The print spooler service is not running when we install the printer on Windows 10, 8.1 or 7. The installation process will not continue, affecting the user's work. So how can I fix the error The print spooler service is not running when installing the printer?

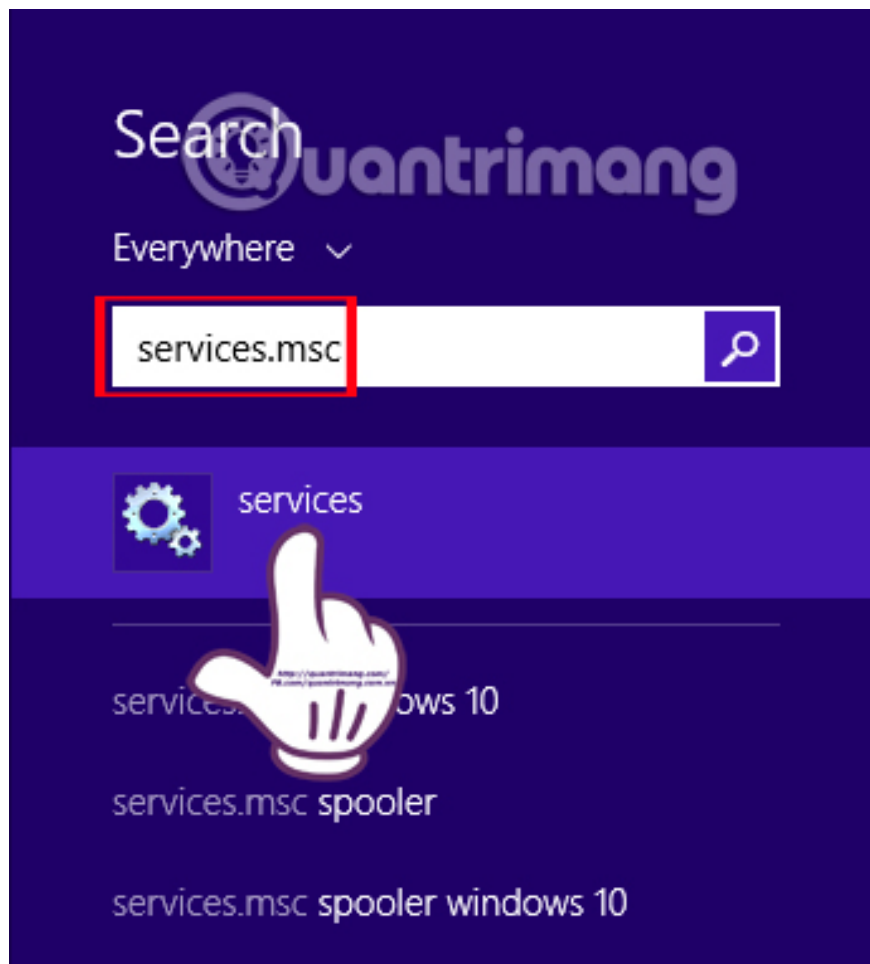
## How to fix the error The spooler print service is not running

**Note** , the article is done with Windows 8.1. With other operating system versions, we do the same.



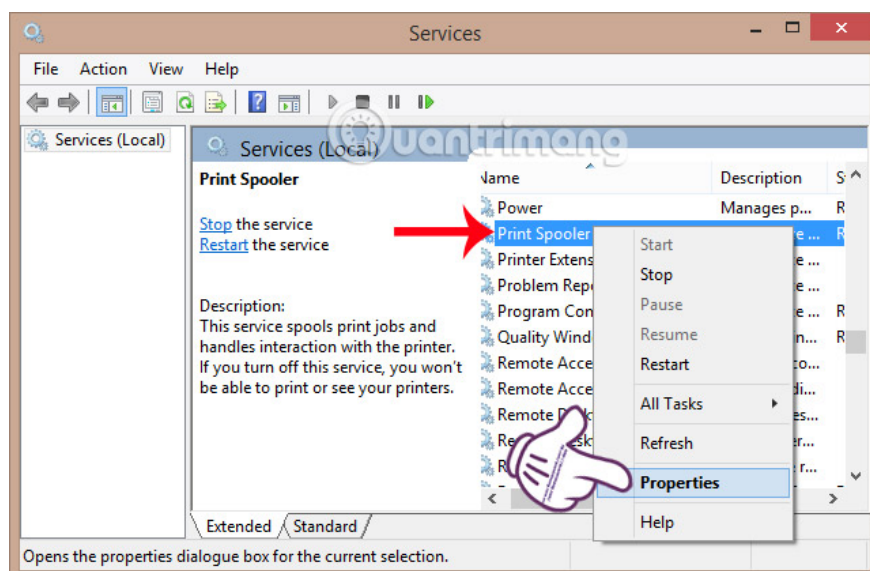
### Step 1:

First of all, click the **Search** button or the Start button and type the search keyword **services.msc** .



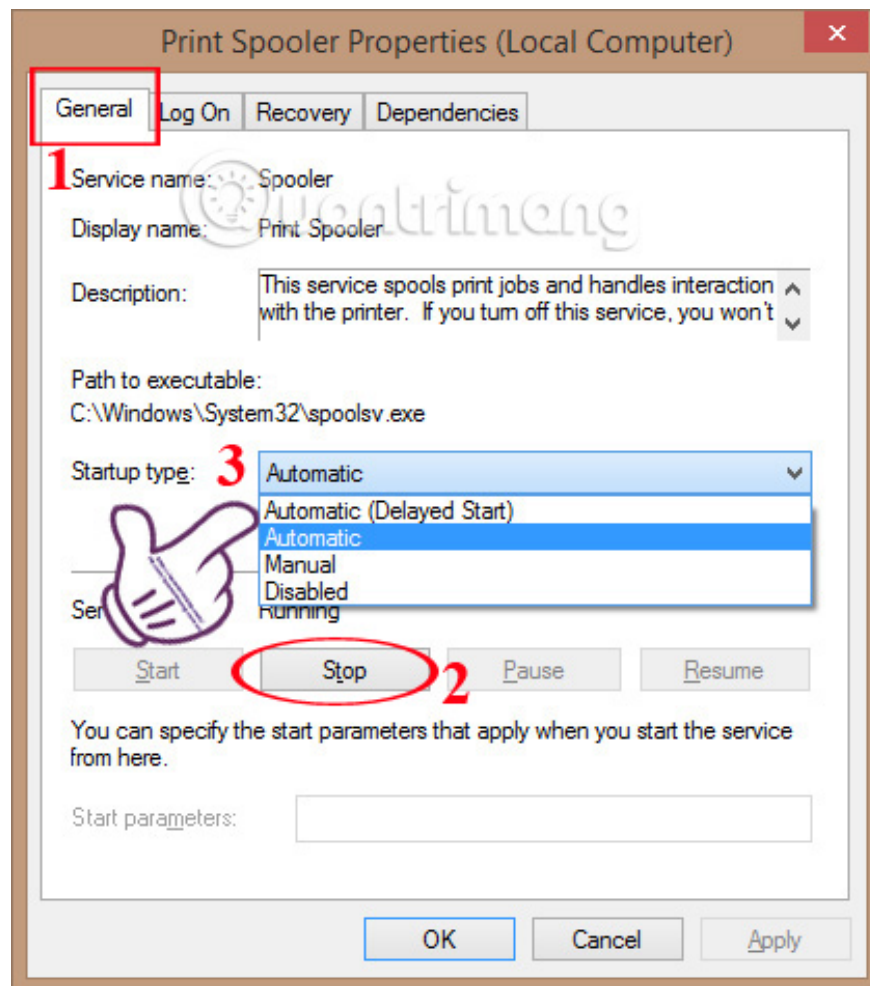
## Step 2:

At the **Services** window, we find the **Print Spooler** section . Then right-click and select **Properties** .



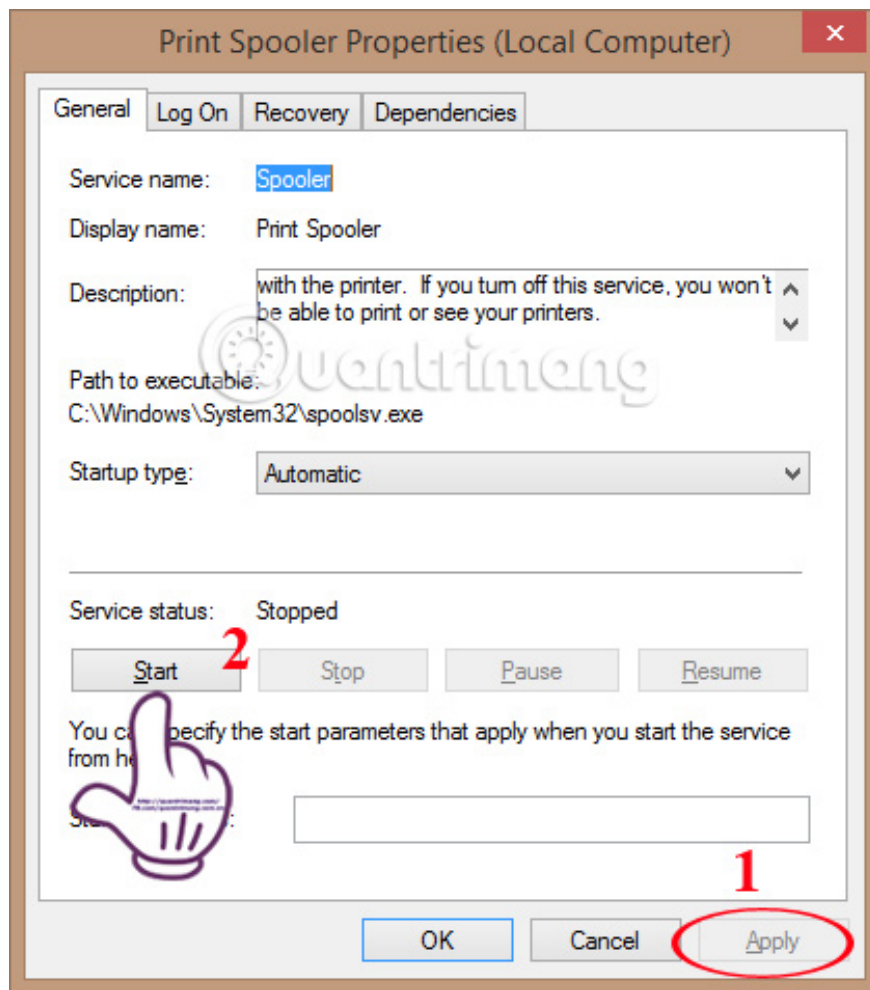
### Step 3:

**Print Spooler** interface (**Local Computer**) . At the **General** tab, click the **Stop** button below to stop running. Next, **Startup type** , we will select **Automatic** mode.



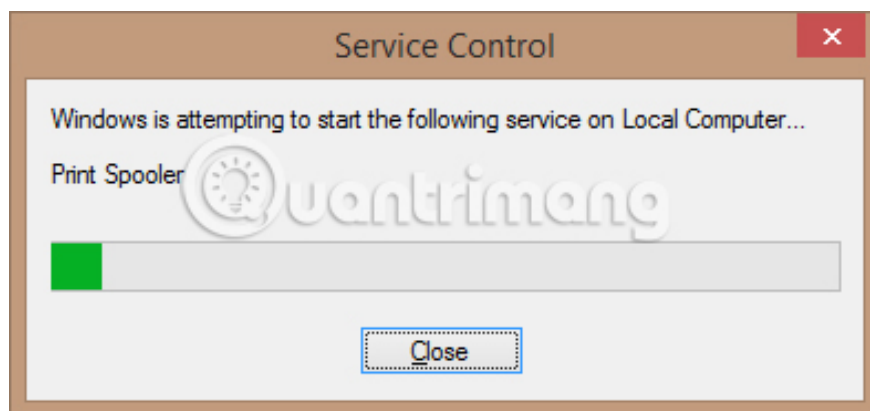
### Step 4:

Then click **Apply** to save and click **Start** to run.



### Step 5:

We wait a few seconds for Print Spooler to restart.



### Step 6:

After that, when you return to the Service window, you will see the **Print Spooler** in **Automatic** mode. Finally, we restart the computer for the change to take effect.

Performance Counter DLL ...	Enables rem...		Manual	Loc
Performance Logs & Alerts	Performanc...		Manual	Loc
Plug and Play	Enables a c...	Running	Manual	Loc
PNRP Machine Name Publi...	This service ...		Manual	Loc
Portable Device Enumerator...	Enforces gr...		Manual (Trig...	Loc
Power	Manages p...	Running	Automatic	Loc
Print Spooler	This service ...	Started	Automatic	Loc
Printer Extensions and Notif...	This service ...		Manual	Loc
Problem Reports and Soluti...	This service ...		Manual	Loc
Program Compatibility Assi...	This service ...	Running	Automatic	Loc
Quality Windows Audio Vid...	Quality Win...	Running	Manual	Loc
Remote Access Auto Conne...	Creates a co...		Manual	Loc
Remote Access Connection...	Manages di...		Manual	Loc

The above is a step-by-step guide to help you troubleshoot errors when installing the printer on a Windows 10,8.1,7 computer, especially a notification error. Hopefully with this fix, we can continue the process of installing the printer on Windows and using it normally.

### Refer to the following articles:

1. Instructions for installing the printer in Windows 8
1. How to share printers between Windows 7 computers without Homegroup?
1. Common printer errors and how to fix them

### I wish you all success!

You finished reading the article "**Fix the spooler print service service not running on Windows 10, 8.1, 7**" edited by the [TipsMake](#) team. We hope this article has provided you with many useful tech tips and tricks. You can search for similar articles on tips and guides. Thank you for reading and for following us regularly.