

Fix the error of icons turning into other icons on the computer quickly and easily

Do you feel uncomfortable because the icon turns into a strange symbol? TipsMake will help fix the error of the icon turning into another icon in a very simple way.

Hello! Do you feel uncomfortable because the icon turned into a 'strange' symbol? TipsMake will help you fix the error of the icon turning into another icon in a very simple way. Let's Go!

icon on the computer will help users easily access the software they need. So, if one day the icons suddenly turn into different icons, especially if the icons are the same, you will definitely be extremely frustrated, and your experience on the device will also be affected. Therefore, **TipsMake** has revealed how to **fix the error of the icon turning into another specific icon** in the next section.





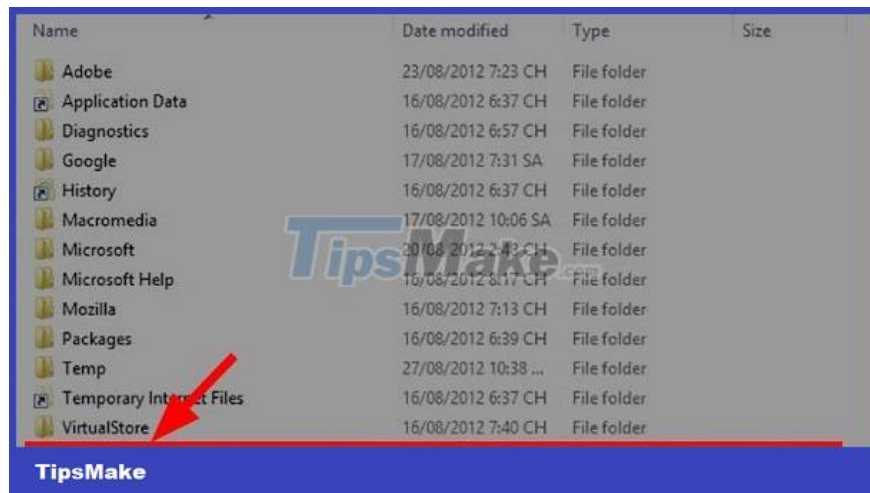
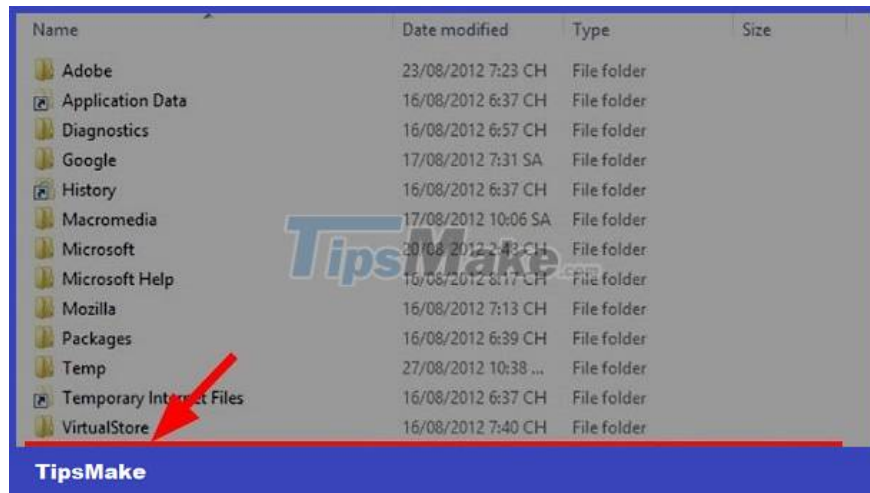
Details on how to fix the error of the icon turning into another icon on the computer

As for icons turning into other icons, there are many different cases. I will share each case as well as the corresponding solution to help you fix this error!

In case the icon turns into a white paper icon

This is a situation where the icon is still displayed but instead of the software icon as usual. Then everything turns into the same white sheet of paper. How to fix this same desktop icon error is not too complicated, you just need to follow these steps:

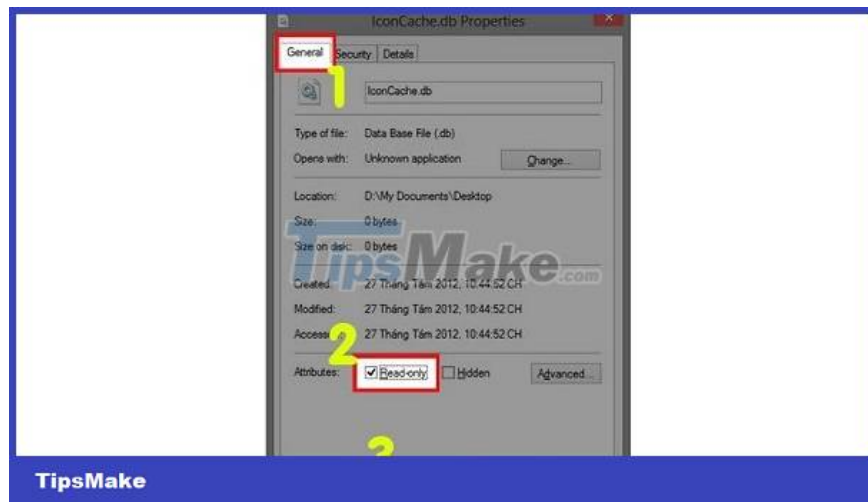
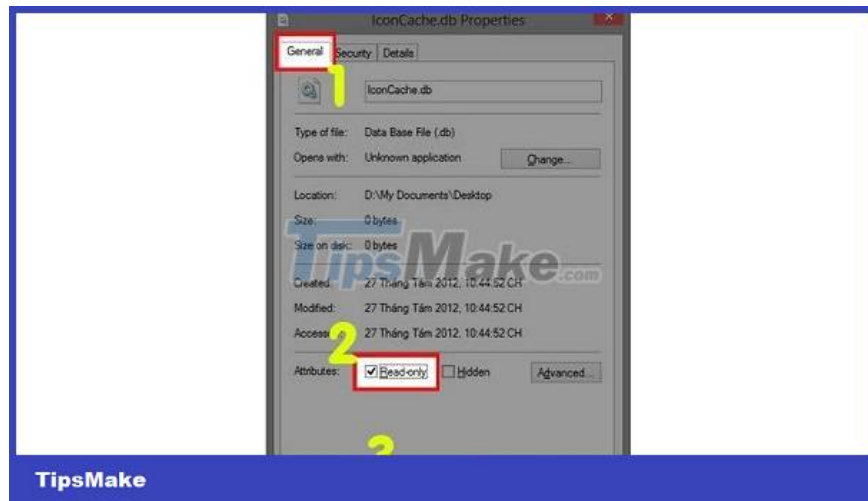
1. **Step 1** : Users need to open the folder containing the *IconCache.db* file. If it is Windows 7, 8 and 10, navigate to the path: *C:/ > Users > Computer user account name > AppData > Local* . As for Windows XP, follow the path: *C:/ > Documents and Settings > Account name used on the computer > Local Settings > Application Data* .
2. **Step 2** : After finding the *IconCache.db* file> You need to delete this file.



- Step 3** : Once deleted, you now need to create a new *IconCache.db* file containing empty content. To do this, you just need to create a **notepad** file with no content > Then select **Save as** and save with the name **IconCache.db** .



- Step 4** : In the new *IconCache.db* file, right-click on this file > Click **Properties** > Tick **Read-Only** > Click **Apply** and **OK** to save. Then, restart your computer and see if the icon is displayed normally.

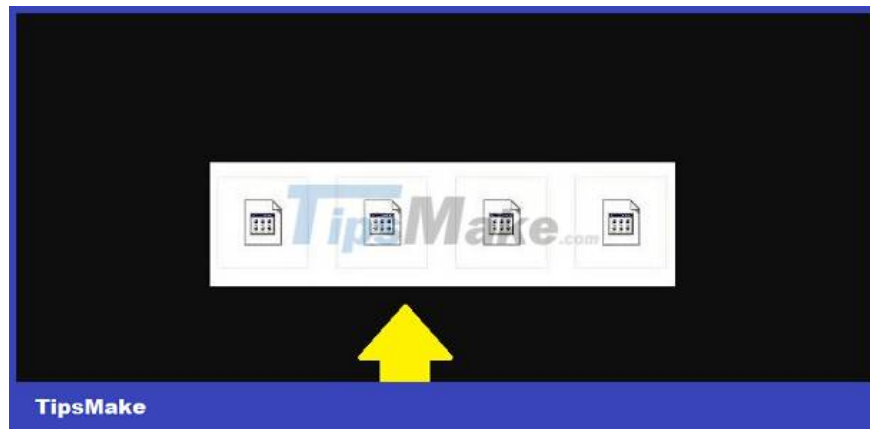


Note:

1. If the above method doesn't work, try deleting User Choice. First, press the Windows + R key combination > Enter in the **Regedit** box and click **OK** to run the command. In the next interface, find the path **HKEY_CURRENT_USER > Software > Microsoft > Windows > Current Version > Explorer > FileExts > .Lnk (Or .rar)**
2. Then, go to **User Choice > Select Delete to delete > Restart the computer and see if the icon is normal or not.**

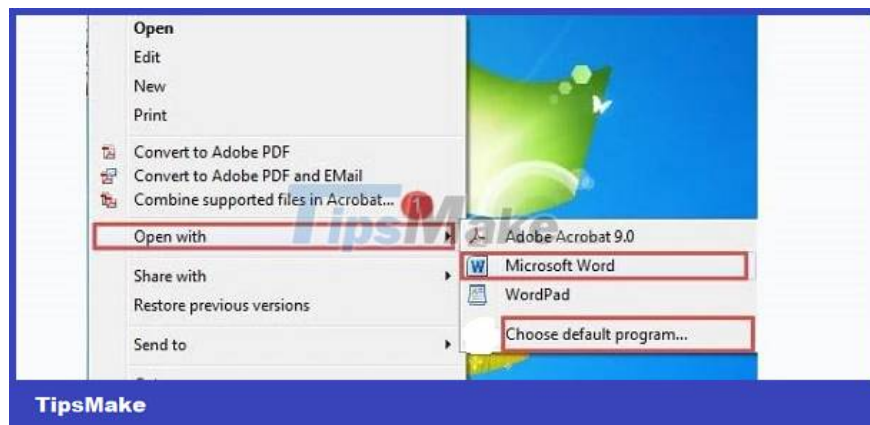
In case the Word icon is corrupted

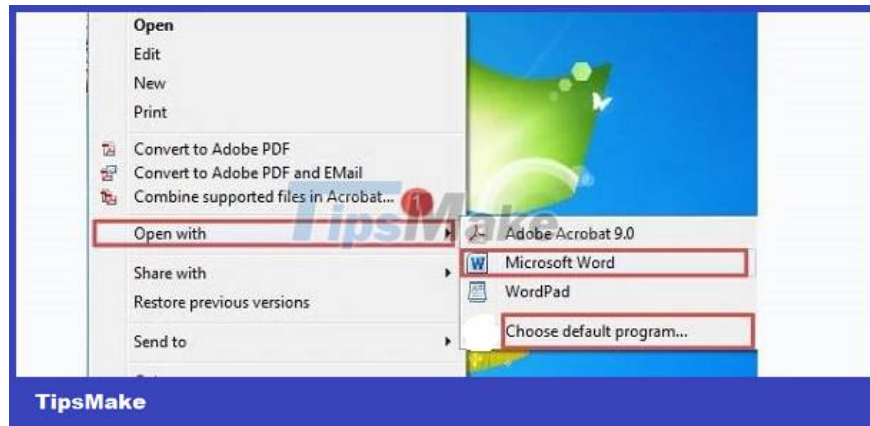
This is a situation where the Word icon turns into an icon as below



How to fix the error of the icon turning into a Word icon in this case as follows:

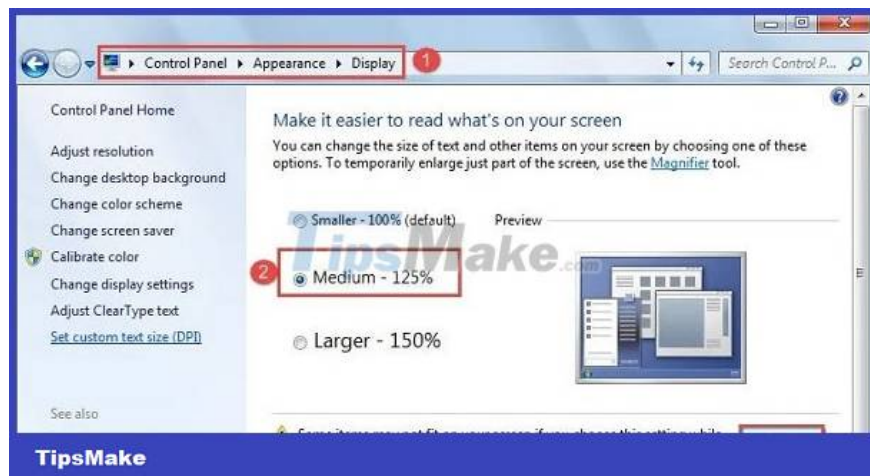
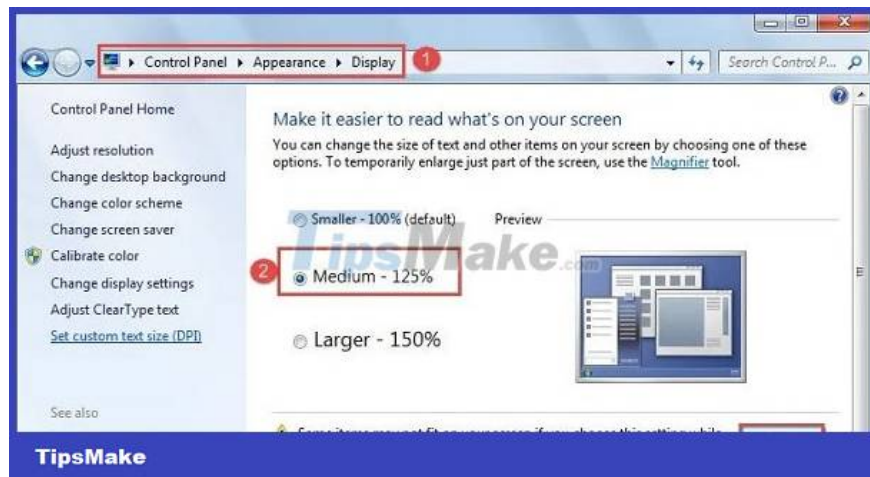
The user right-clicks on the file that is having this error > Select **Open with** > Then select **Microsoft Word** > So, you will be able to open the Word file as usual.





If that doesn't work, you should refresh the Windows icon with these steps:

1. **Step 1** : Open **Control Panel** > Click **Appearance** > Click **Display** .
2. **Step 2** : Then, click **Medium-125%** > Click **Apply** > When the message displays, click **Log off now** .



1. **Step 3** : Restart the computer > Continue repeating steps 1 and 2 but tick **Smaller-100%** > Click **Apply** to save and check the icon again to see if it is displayed normally.

Some other solutions

1. *The error of an icon turning into another icon is also likely caused by a virus. You should scan and remove viruses on your computer if any.*
2. *Besides, the outdated and not updated version of Windows is also one of the main causes of many problems on the computer. Therefore, users should also check and update Windows if any updates are available.*
3. *In case all of the above measures fail, it is possible that you will have to reinstall Windows. But this method causes data loss, so you need to consider carefully before doing it.*

TipsMake hopes that the above solutions will help you successfully fix the error of icons turning into other icons on your computer!

You finished reading the article "**Fix the error of icons turning into other icons on the computer quickly and easily**" edited by the [TipsMake](#) team. We hope this article has provided you with many useful tech tips and tricks. You can search for similar articles on tips and guides. Thank you for reading and for following us regularly.