

# Fix the error of drive D having a yellow exclamation mark on Windows 11 very quickly

TipsMake will guide you to fix the error of drive D having a yellow exclamation mark on Windows 11 extremely quickly and effectively.

**Drive D shows a yellow exclamation mark icon that annoys you? TipsMake will guide you how to fix the error of drive D with a yellow exclamation mark on Windows 11 extremely quickly and effectively.**

Normally, the partition icon in File Explorer will display information such as name or memory capacity. However, there are cases where a yellow exclamation mark icon appears next to these partitions. This has made many people feel uncomfortable every time they access File Explorer.

Coming to today's **tips** section , we will learn how to **fix the error of drive D having a yellow exclamation mark on Windows 11**. If the hard drive partition on your computer also has a yellow exclamation mark icon, let's find a way to fix it!

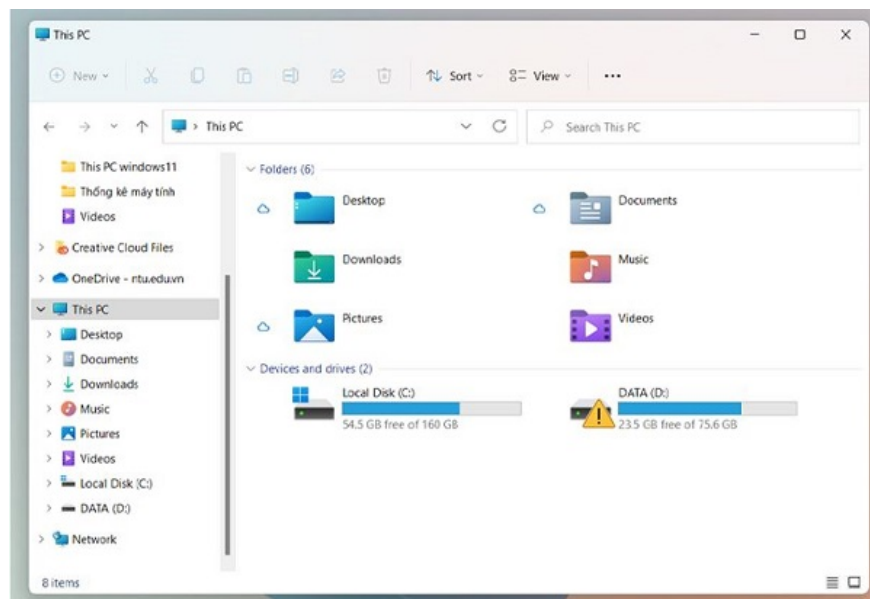


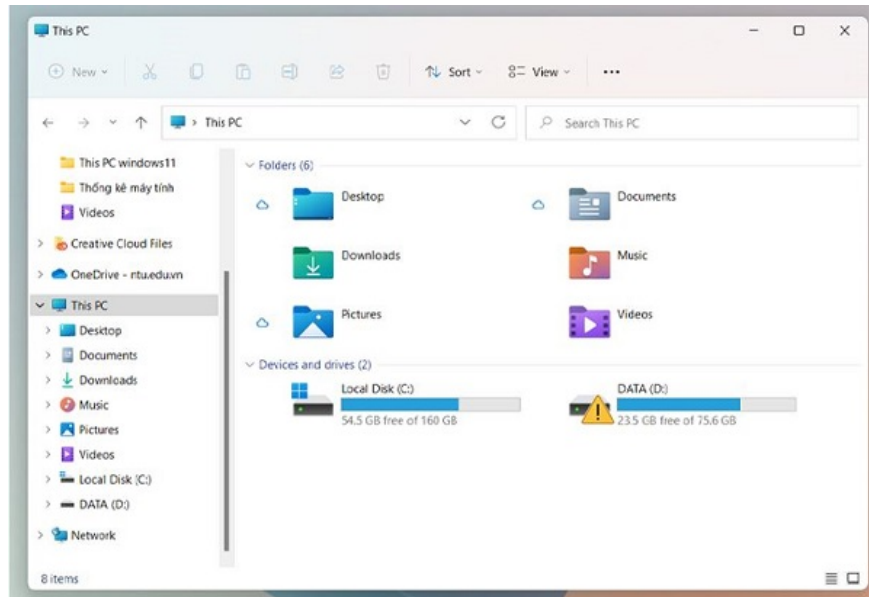


## Information you need to know before fixing the error of drive D having a yellow exclamation mark on Windows 11

According to common perception, the exclamation mark icon on the yellow triangle background will be a warning for danger. So is the status of the drive with the exclamation mark Win 11 due to some problem with the hard drive? In fact, this perception is not wrong, but the truth is not as serious as many people think.

In most cases, the yellow exclamation mark on a hard drive partition is usually due to Bitlocker drive encryption being turned off. In addition, a few cases are due to incompatible file system errors or driver errors or damaged hard drive partitions.





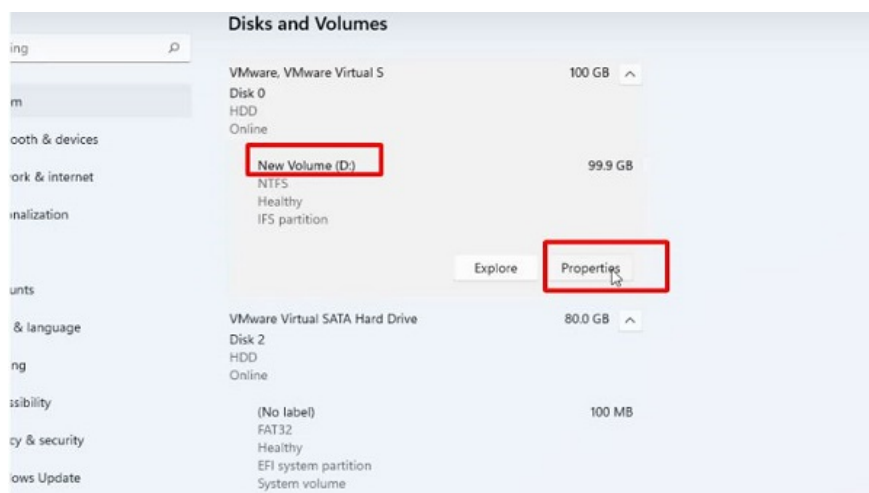
## How to fix the error of drive D showing a yellow exclamation mark

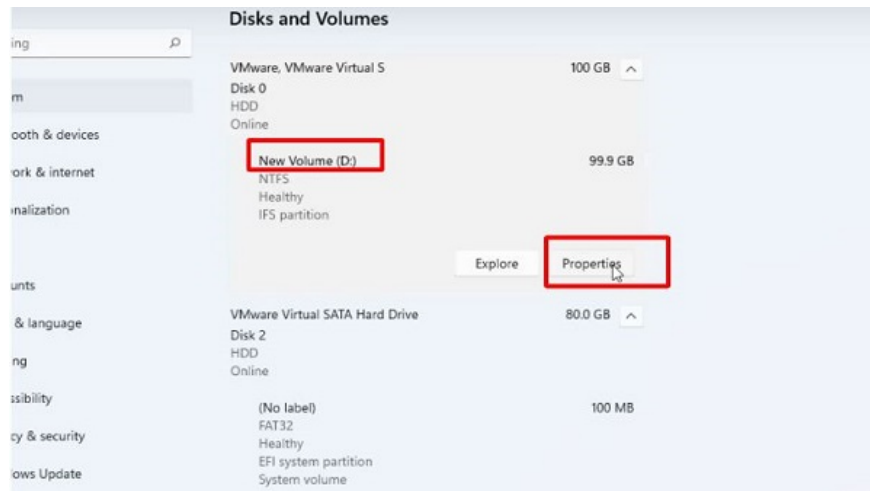
Above, we have briefly learned about why drive D has a yellow exclamation mark. Next, I will guide you through a few measures to handle this annoying situation.

### Turn on Bitlocker

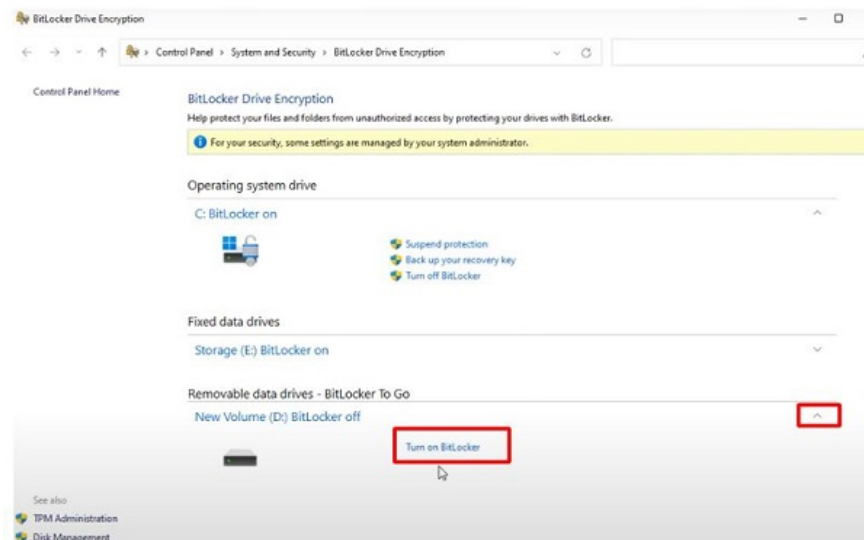
As explained, Bitlocker being turned off is the leading cause of the yellow exclamation mark on drive D. Therefore, to turn off the yellow exclamation mark icon on drive D, the first thing we can try is to turn on Bitlocker. Here is the process for you to enable Bitlocker on Windows 11.

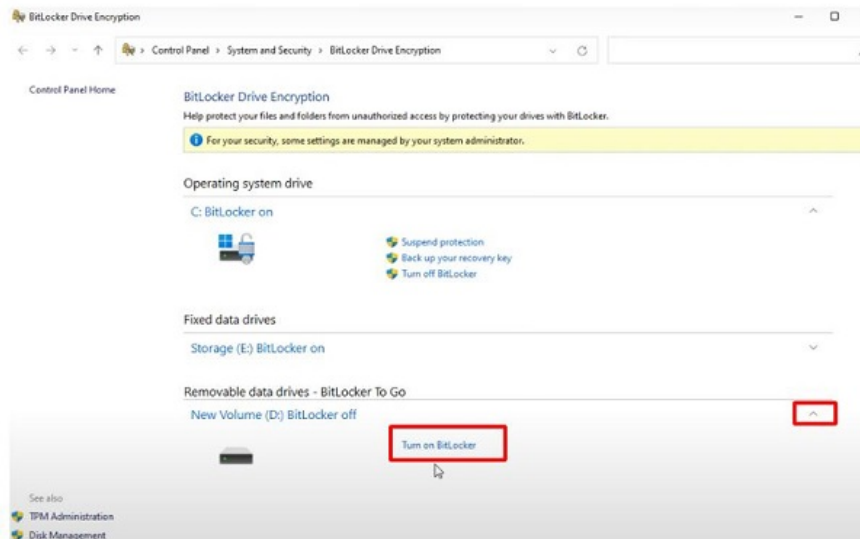
1. **B1** : Press **Windows + I** to open computer settings, then select **Storage** .
2. **B2** : Select **Advanced storage settings** then select **disks & volumes** .
3. **B3** : Click on drive D and select **Properties** .



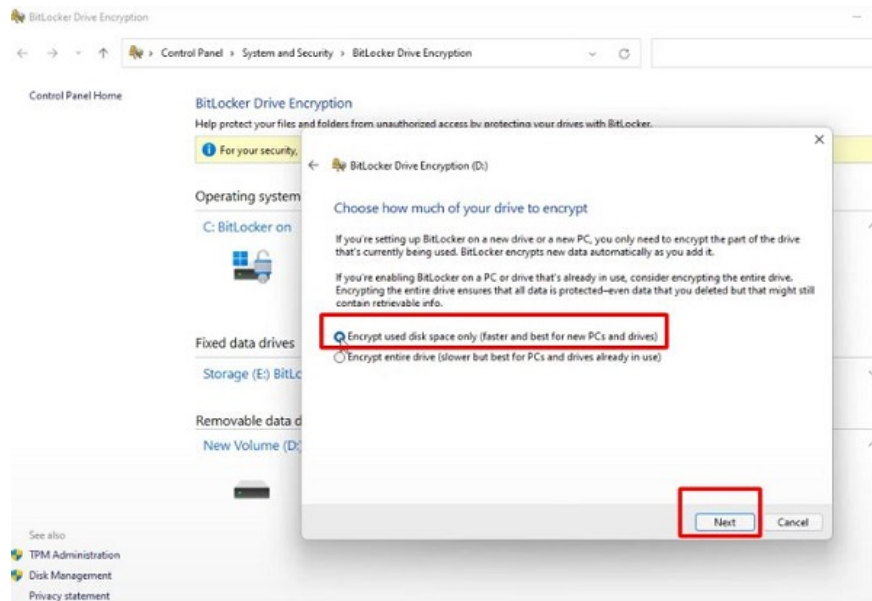


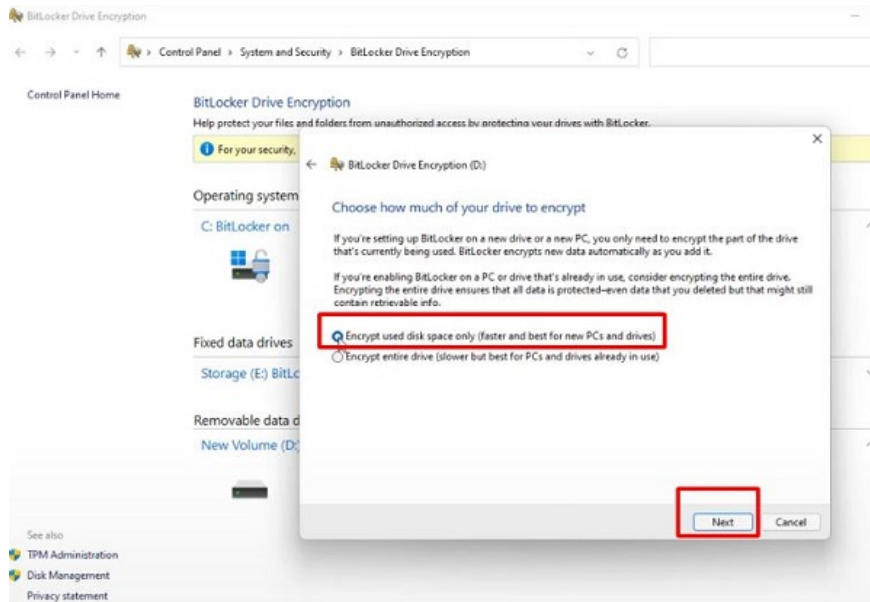
1. **B4** : Scroll down and select **turn on Bitlocker** .
2. **B5** : Click the arrow to expand drive D, then select **turn on Bitlocker** again.





1. **B6** : Tick the box **Use a password to unlock the drive** . Then enter the password twice to confirm and click **next** (the password in the 2 boxes must be the same).
2. **B7** : If you are logging in to **your Microsoft account** , you can select the first item. Or you can also select the second item to save the Recovery key on your computer. (In case all drives show a yellow exclamation mark, you need to plug in the USB to save). Then click **next** .
3. **B8** : Select **Encrypt used disk space only** and continue to **next** .





1. **B9** : Select **New encryption mode** and click **next** .
2. **B10** : Finally, click on **Start Encrypting** and wait for the process to complete and you will see the yellow exclamation mark icon on drive D disappear.





## Some other solutions

In my experience, with the above method, you will almost certainly fix the yellow exclamation mark error in drive D. However, if the above method is not effective, you can try some other methods such as updating the driver for the hard drive, formatting the hard drive or reinstalling Windows.

**So we have just learned together how to fix the error of the D drive with a yellow exclamation mark on Windows 11. Hope you can quickly fix the error and return your computer to normal. If your friends or relatives also encounter the same error, please share this article with them!**

- 1. What to do when open command window here does not appear?**
- 2. What is the transparent square appearing on the computer screen?**

You finished reading the article "**Fix the error of drive D having a yellow exclamation mark on Windows 11 very quickly**" edited by the [TipsMake](#) team. We hope this article has provided you with many useful tech tips and tricks. You can search for similar articles on tips and guides. Thank you for reading and for following us regularly.