

Fix the error 0x10000ea (THREAD STUCK IN DEVICE DRIVER M) in Windows

The following article will guide you how to fix 0x10000ea: THREAD STUCK IN DEVICE DRIVER M for Windows XP, Vista, 7, 8, 8.1 or 10 operating systems.

The following article will guide you how to fix 0x10000ea: THREAD STUCK IN DEVICE DRIVER M for Windows XP, Vista, 7, 8, 8.1 or 10 operating systems.

Fix 0x10000ea error (THREAD STUCK IN DEVICE DRIVER)

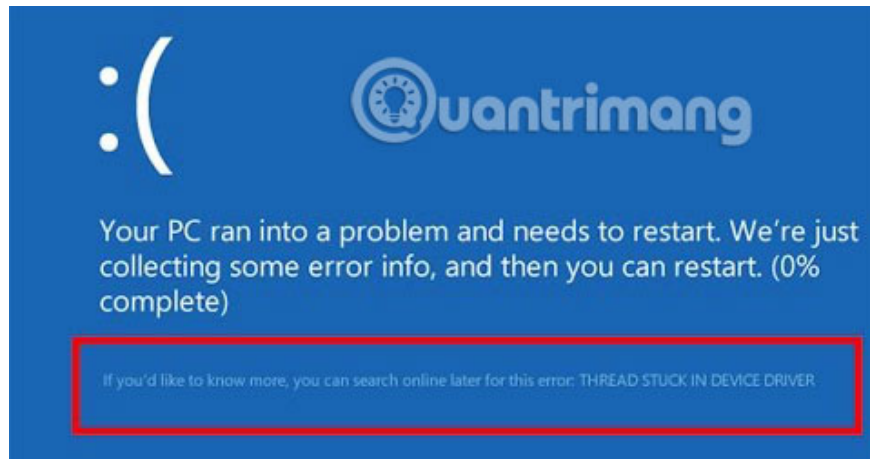
1. About error 0x10000ea
 1. Describe
 2. The cause of error 0x10000ea: THREAD STUCK IN DEVICE DRIVER M
2. Fix 0x10000ea error on Windows
 1. Fix 1: Reinstall the video driver
 2. Remedy 2: Set Hardware Acceleration option to None
 3. Remedy 3: Replace the video card

About error 0x10000ea

Describe

The following error or warning messages are related to this error.

N?u mu?n mu?n bi?t thêm, b?n có th? tìm ki?m online sau ?? này l?i: THREAD STUCK IN DEVICE DRIVER M



The 0x100000ea error is encountered when the video hardware device driver falls into an infinite loop and Windows must terminate it and stop the boot process.

The cause of error 0x100000ea: THREAD STUCK IN DEVICE DRIVER M

The most common cause of this error is an outdated or outdated device driver. In addition, this error may appear after updating drivers or installing Windows.

Fix 0x100000ea error on Windows

Fix 1: Reinstall the video driver

Because 0x100000ea error is usually caused by video hardware, the video driver may not be compatible with the version of Windows in use.

Make sure the Windows version you are using has the correct driver for the video hardware and driver version that is compatible with the Windows version.

To update the driver, follow these steps:

1. Click the **Start** menu .
2. Enter **devmgmt.msc** in the search box and click **devmgmt** or **Device Manager**.



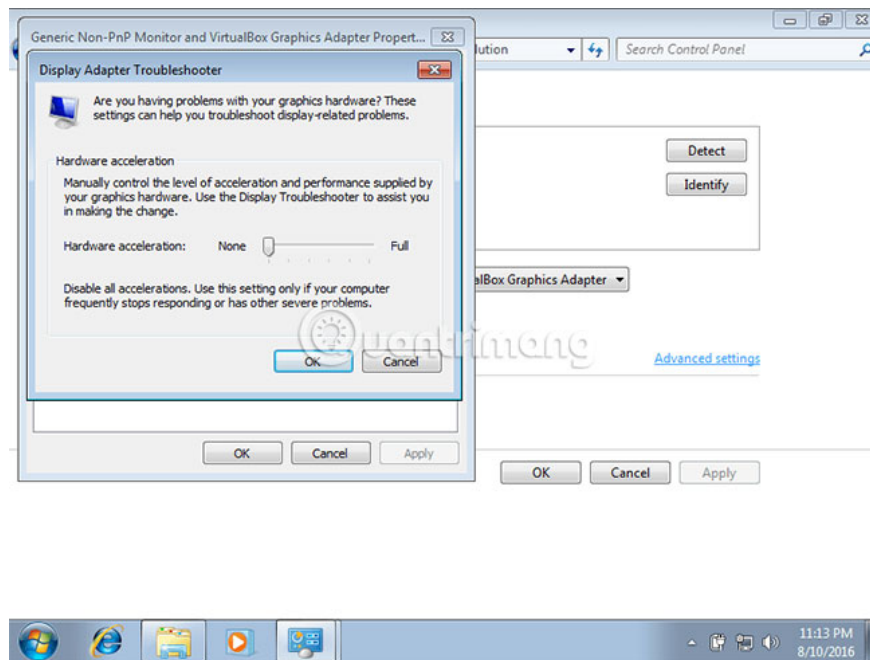
3. Right-click the driver.
4. Click **Update**.

Remedy 2: Set Hardware Acceleration option to None

Setting the **Hardware Acceleration** option to **None** can fix this error. However, if you do so, you can make the video card's function and performance decrease.

Follow these steps:

1. Click the **Start** menu .
2. Enter **display** in the search box.
3. Select **Display from the list** .
4. Go to **Change Display Settings** section .
5. Click **Advanced Settings**.
6. Go to the **Troubleshoot** section .
7. Click **Change Settings**.
8. Drag the **Hardware Acceleration** slider to **None**.
9. Click **OK**.
10. Restart the computer.



Remedy 3: Replace the video card

Since the 0x100000ea error is caused by a video device or driver for that device, try replacing the new video card for the computer and see if the error is resolved.



Hope you are succesful.

You finished reading the article "**Fix the error 0x100000ea (THREAD STUCK IN DEVICE DRIVER M) in Windows**" edited by the [TipsMake](#) team. We hope this article has provided you with many useful tech tips and tricks. You can search for similar articles on tips and guides. Thank you for reading and for following us regularly.