

Fix 'The current BIOS setting do not fully support the boot device' in Windows 10

In today's article, TipsMake.com will show you how to resolve the 'The current BIOS setting do not fully support the boot device' error that you may encounter on your Windows 10 computer.

In today's article, **TipsMake.com** will show you how to resolve the *'The current BIOS setting do not fully support the boot device'* error that you may encounter on your Windows 10 computer.

If you encounter this problem, you should try the following solutions!

1. Check the hard drive

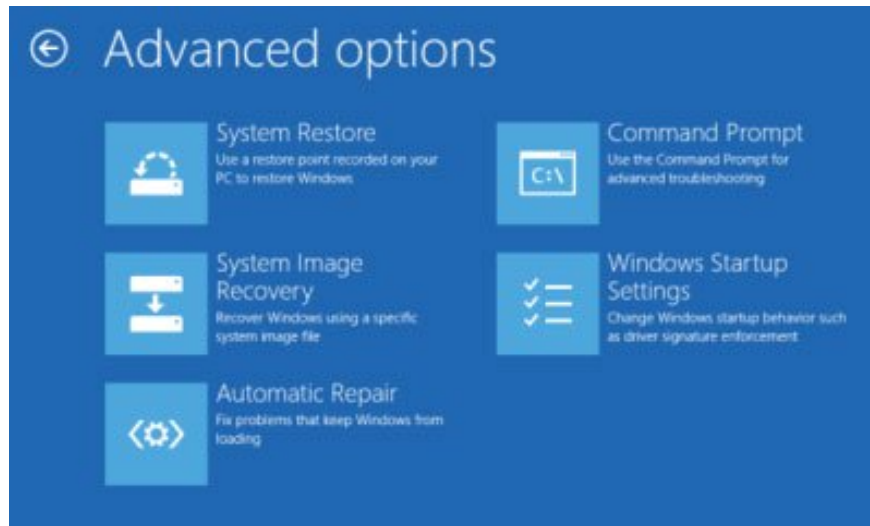
This solution requires you to open the computer and disconnect, then reconnect the internal hardware. Only proceed if you know what you're doing or take your computer to a hardware technician to perform the process.

If this is new or relatively new hardware, check the hard drive for problems connecting. Turn on the computer and disconnect the SATA cable from the hard drive and motherboard. Also, disconnect all power from the hard drive and leave the components inactive for a few minutes.

Now, plug all the cables and connect the hard drive to the motherboard. Start the computer and see if the problem is solved.

If that doesn't work, try plugging the hard drive into another SATA port on the motherboard to see if that helps.

2. Perform Startup Repair



Perform Startup Repair

Startup Repair in Windows 10 is another way to start your PC and run recovery tools when there's an operating system problem.

Check out the following article for how to do it: [How to run Startup Repair in Windows 10.](#)

Windows will then search for the problem on the hard drive (s) and verify that all necessary files are intact.

3. Check the priority of the boot device



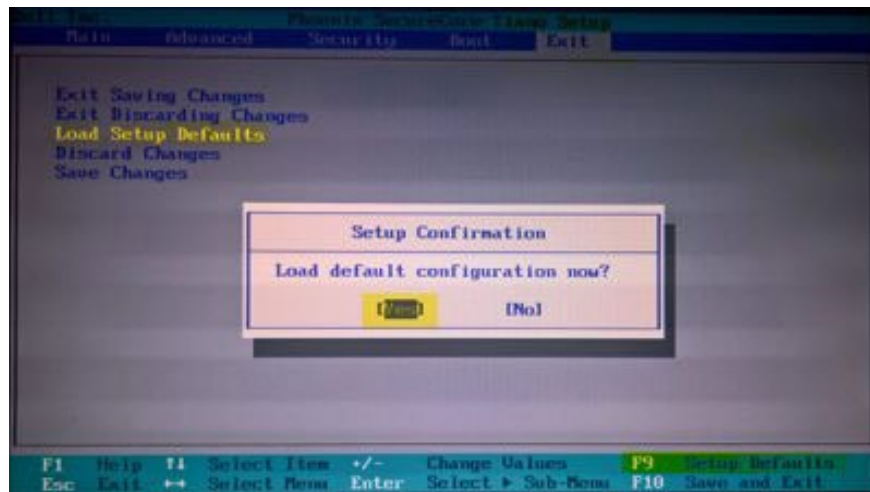
Check the priority of the boot device

Boot the computer and press **ESC / F1 / F2 / F8** or **F10** in the initial boot screen to enter the **BIOS Setup** screen .

1. Select the **Enter BIOS setup option** .
2. Because the mouse is not working, use the arrow keys to navigate.
3. Go to the **Boot** tab .
4. Now, check the order of boot devices. Make sure that the hard drive is selected as the preferred device.
5. Exit and restart the computer.

Check to see if the error is resolved. If not, proceed to the next solution.

4. Reset BIOS settings



Reset BIOS settings

To reset BIOS settings, follow the instructions in the article: 3 simple ways to reset BIOS settings. Then exit and restart the computer. When booting, check if the BIOS error has been resolved.

You finished reading the article "**Fix 'The current BIOS setting do not fully support the boot device' in Windows 10**" edited by the [TipsMake](#) team. We hope this article has provided you with many useful tech tips and tricks. You can search for similar articles on tips and guides. Thank you for reading and for following us regularly.