

# Fix some common errors when using USB

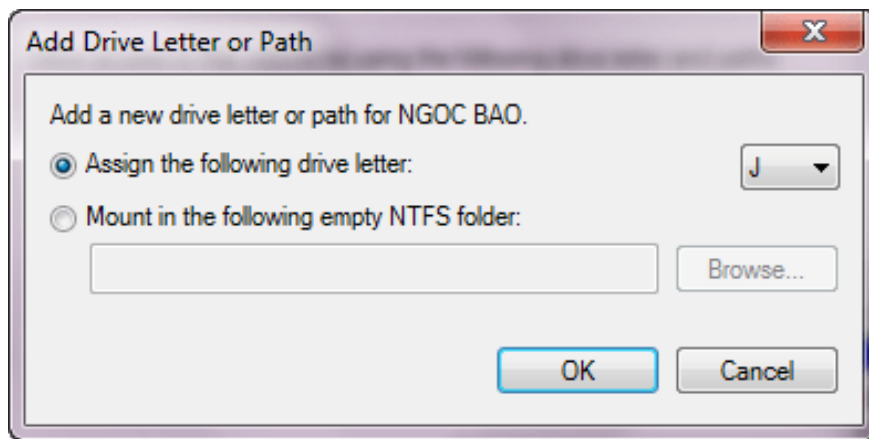
USB is the most commonly used storage medium today. When using this device, sometimes you encounter some unpleasant errors. The following article will help you fix some of these basic errors.

USB is the most commonly used storage medium today. When using this device, sometimes you encounter some unpleasant errors. The following article will help you fix some of these basic errors.

## 1. The computer does not recognize the USB

First you should check the USB device on many different computers. Next, try plugging in the other ports of your computer, especially the rear ports for the desktop because there are some USB ports. Insufficient resources to supply leads to unrecognized devices.

Besides, your USB may have been recognized by the computer but it does not appear in the Windows Explorer window due to a drive signature error (this may be caused by a corrupted registry, a virus infection .). To fix, go to **Start -> Run** type **compmgmt.msc** , press **Enter** to enter Computer Management interface (or through **Control Panel / Administrative Tools / Computer Management** ). In the left branch you select **Computer Management (Local) Storage Disk Management**. Right-click the USB drive and select **Change Drive letter and paths** , continue to click the **Add** button, select **the drive letter** , check the **Assigning the following drive letter** entry and click **OK** . Then go to Windows Explorer to check if it appears.



If still not, you continue to the **Registry** to proceed to delete two more courses **4D36E967-E325-11CE-BFC1-08002BE10318** and **4D36E980-E325-11CE-BFC1-08002BE10318** in the **HKEY\_LOCAL\_MACHINESYSTEMCurrentControlSetControlClass** path. Then restart the computer for the changes to take effect. Remember before working with, proceed to back up the registry in case of unexpected problems by going to menu **File -> Export**.

## 2. Do not safely remove the USB

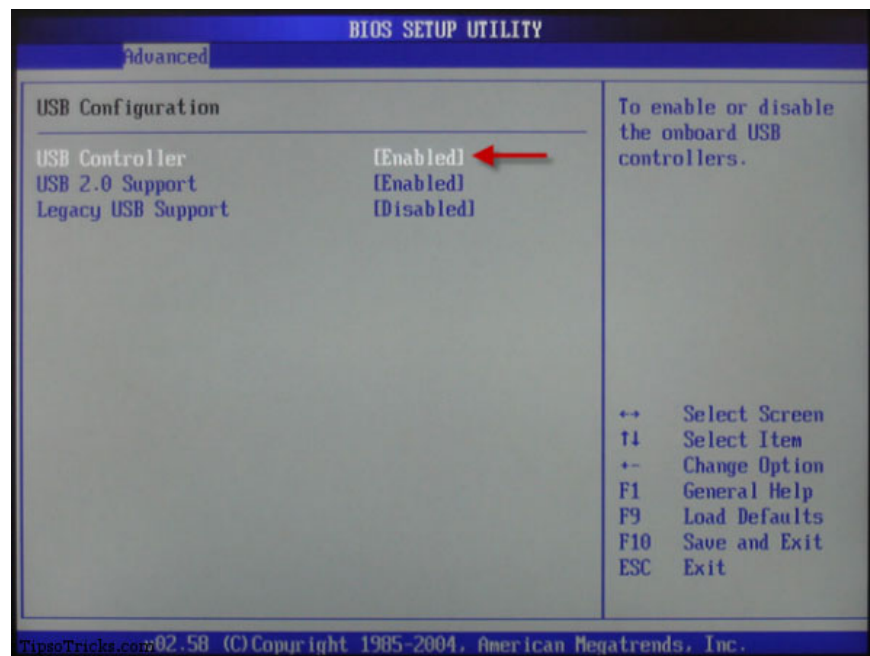
You proceed to remove the USB device from the computer using **Safely remove hardware and eject media** but receive a message *"The Device Generic volume cannot be stopped right now. Try stopping the device later "* and *the device* cannot be pulled out. The cause may be that some processes are still active on the USB. You try turning off all programs that are accessing USB from the system tray, taskbar and even in Task Manager. If still not possible you should use **Unlocker** software. After installing, right-click on the USB device and select **Unlocker** . In the program interface that appears, press **Unlock all** to turn off all active applications. Then proceed to withdraw the USB as usual. If you still can't do **Log Off** or **Restart** your computer and use **safely remove** to finish.

### 3. USB device is locked

USB devices are usually recognized by Windows without installing the attached Driver. And if you have removed the old driver, installed all the necessary new drivers, and still have the error of *Found new hardware* or *USB Mass Storage Device, please install the driver for it* . locked. You can fix it via BIOS, Device Manager or Registry.

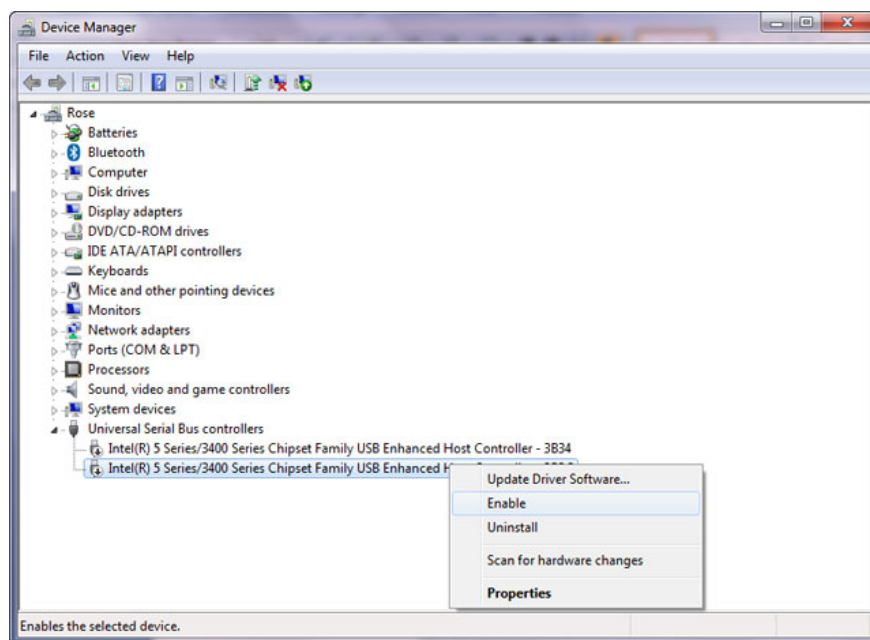
#### - Through the BIOS

After restarting the computer, quickly press **F2** , **DEL** , **F12** . to open the BIOS UTILITY window. Find the **Advanced Settings** section or the **Onboard Devices** menu (shortcuts as well as these items depend on the BIOS manufacturer). Go to **USB Configuration** and adjust the value of the **USB Controllers** to **Enabled** to re-enable all USB ports.



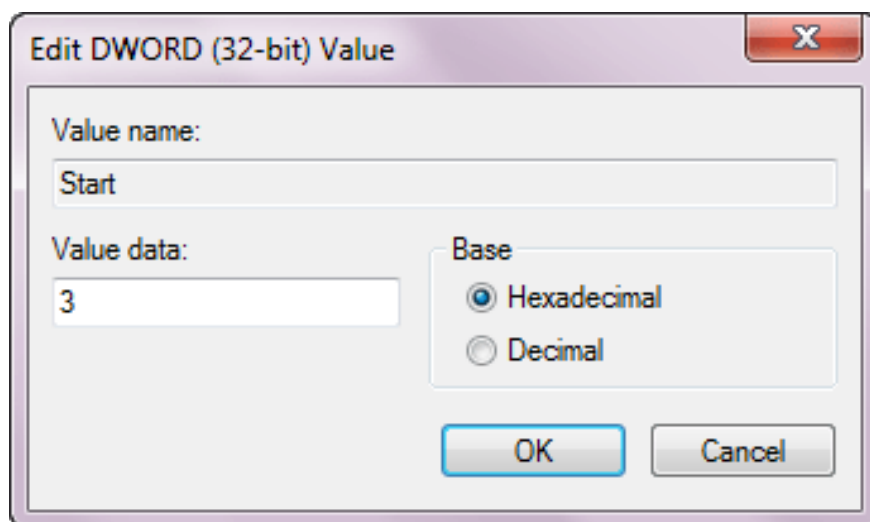
#### - Through Device Manager

First, press **Windows + R** to enter the **Run** dialog box and type **devmgmt.msc** to enter Device Manager. Navigate to **Universal Serial Bus Controller**, right-click and select **Enable** in all of the sub-items that appear.



### - Through Registry Editor

Click the **Windows + R** key combination to enter the **Run** dialog box and type **regedit** to enter the Registry Editor. Find **HKEY\_LOCAL\_MACHINE\SYSTEM\CurrentControlSet\Service\USBSTOR** key . In the right pane, double-click the **Start** item and enter 3 into the Value Data frame, and also edit the Base item on Hexadecimal. Click **OK** to finish. To disable the USB feature you change.

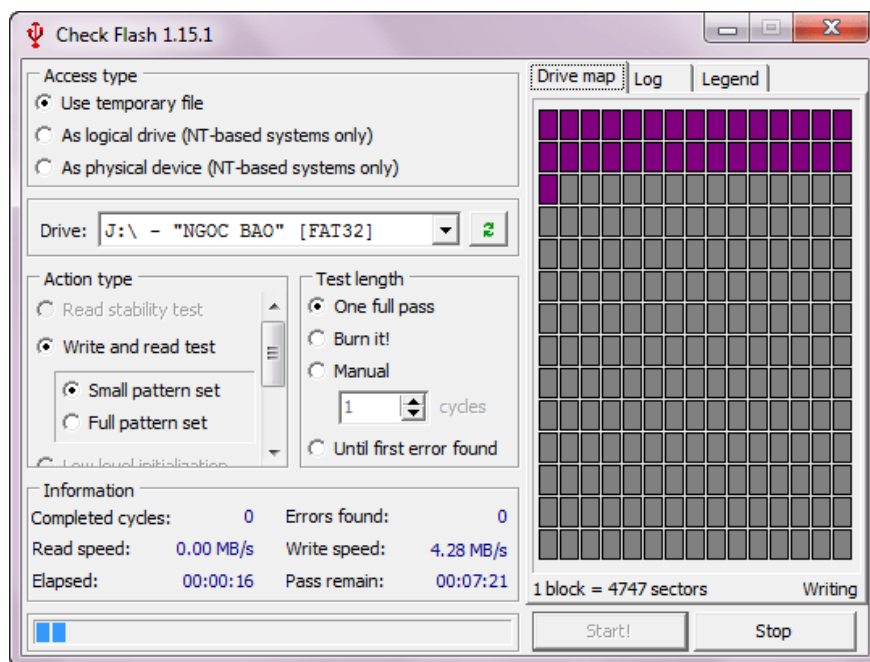


However, if the USB port is locked with specialized software such as ID Devices Lock, . then you can only unlock your device if you know the software's password to disable it.

### 4. Unable to format USB drive

When you proceed to USB format, you get an error message *Cannot format the USB Drive* . The cause may be due to destructive virus hindering the process of formatting equipment, faulty equipment, . If you encounter this situation you should perform a virus scan for the device to eliminate the danger, it is best to scan on another

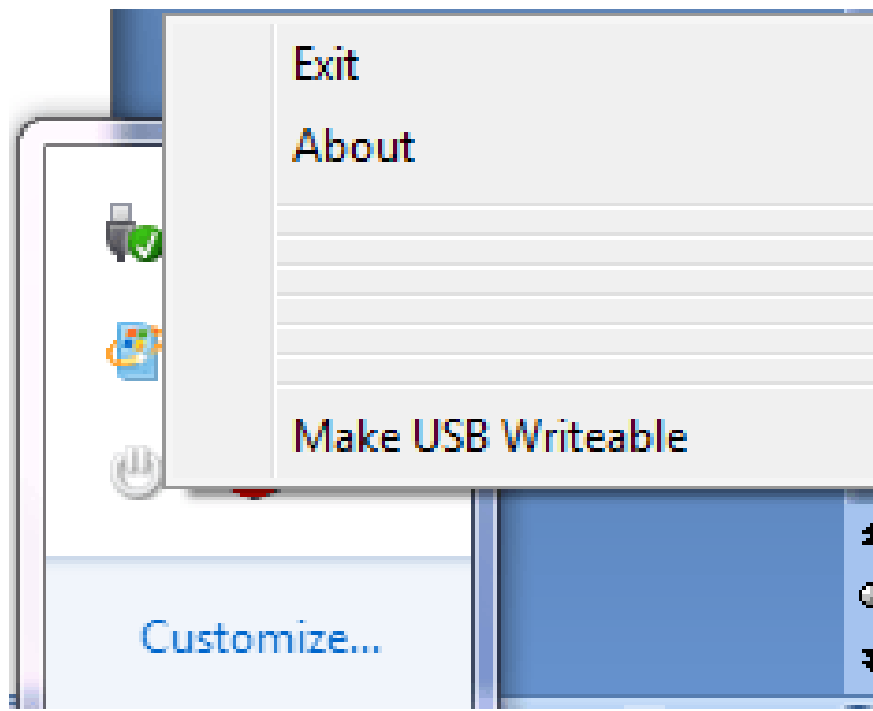
computer and then proceed to reformat the USB. Alternatively you can use the software. CheckFlash to check and fix USB errors, and also to format functions for USB.



## 5. Do not write data to USB

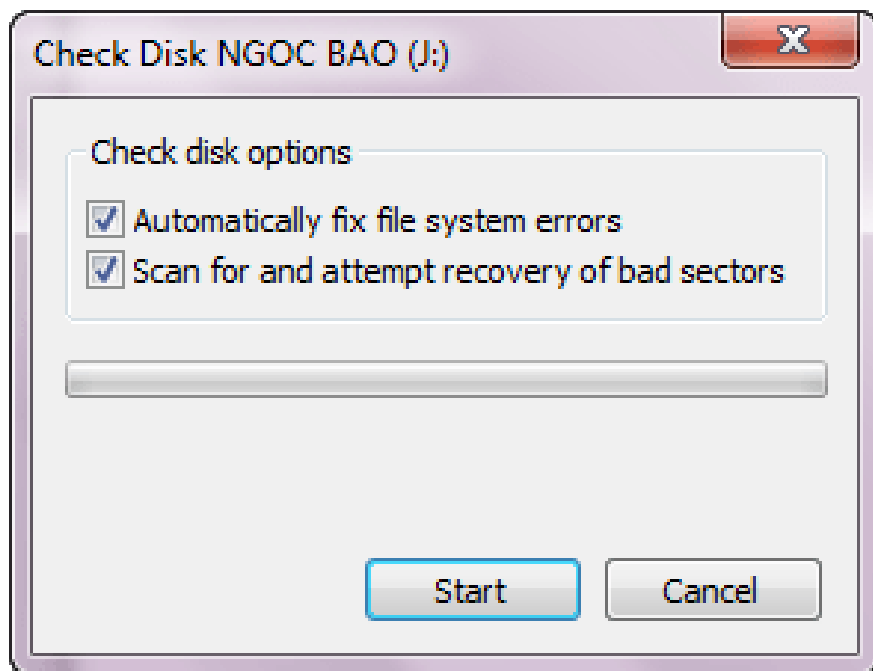
If you get this error, your USB may not format or write any data on it. You should first check to see if your device is equipped with a write-protect button. This button allows you to disable copying of data between your computer and USB, especially useful for preventing viruses.

For simplicity you should use portable Thumbscrew software. After starting the program, right-click the icon under the system tray and select **Make USB Read Only** , remove the USB and plug it back into the computer, the software will work. If you want to record the data again, right-click the icon and choose **Make USB Writeable** . The software with similar functions is USB Write Protect, Formatter, .



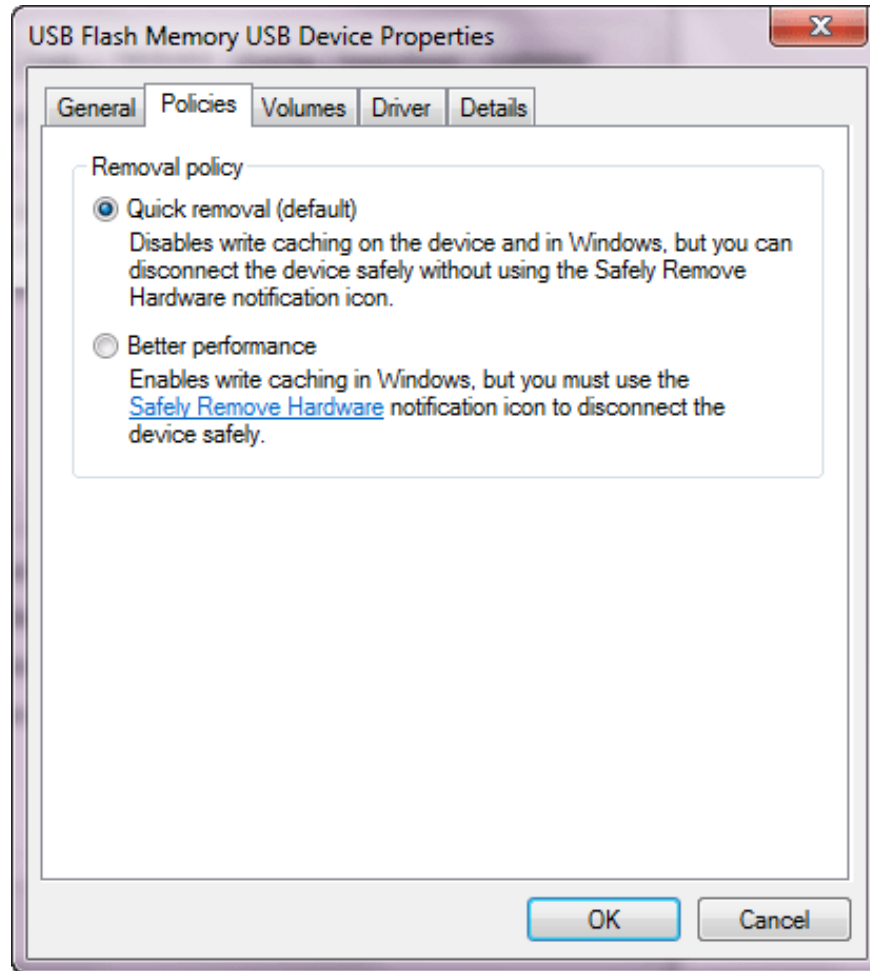
## 6. USB disk surface error

When connecting USB to the computer, you will see the message of *delayed delayed Windows - Windows was unable to save all data for the file* . To fix this error, you should use the **Check disk** utility available in Windows to fix. Right-click the USB drive and select **Properties** , select the **Tools** tab and click the **Check now** button at **Error-checking** . Check the two options that appear and click **Start** .



Also this error is also common with the drive has enabled **write cache** feature, this feature helps speed up access, but at the same time is also very easy to generate data loss. To fix it, right-click the USB drive and select

**Properties** . In the Properties dialog select the **Hardware** tab, select the USB drive, then click the **Properties** button, switch to the **Policies** tab, and then uncheck the *Enable write caching on the disk box* (for XP). With Windows 7, check the box for Quick removal (default).



## 7. Error losing all data on USB

There are two main reasons for this situation: destructive virus and device's firmware error.

First, perform a virus scan for the system and USB in Safe Mode to destroy all viruses and then copy the data to the hard drive on your computer.

At the same time, the firmware error will cause your USB drive to flicker when it is received, not to copy the data, USB will report a capacity of 0 MB even though Windows Explorer still recognizes the device. If the USB data does not contain any important data, you can manually update the firmware by downloading it from the manufacturer's website or searching on Google. Updating the firmware will cause the data on your USB to go out. If it contains important data, you should bring it to the center for data repair and recovery.

Usually USB manufacturers are accompanied by repair tools for their devices. You go to the home page of USB manufacturers such as JVJ, Kingmax, Kingston, Transcend . to download and use. These tools have quite simple interface and functions suitable for the majority of users

You finished reading the article "**Fix some common errors when using USB**" edited by the [TipsMake](#) team. We hope this article has provided you with many useful tech tips and tricks. You can search for similar articles

on tips and guides. Thank you for reading and for following us regularly.

---