

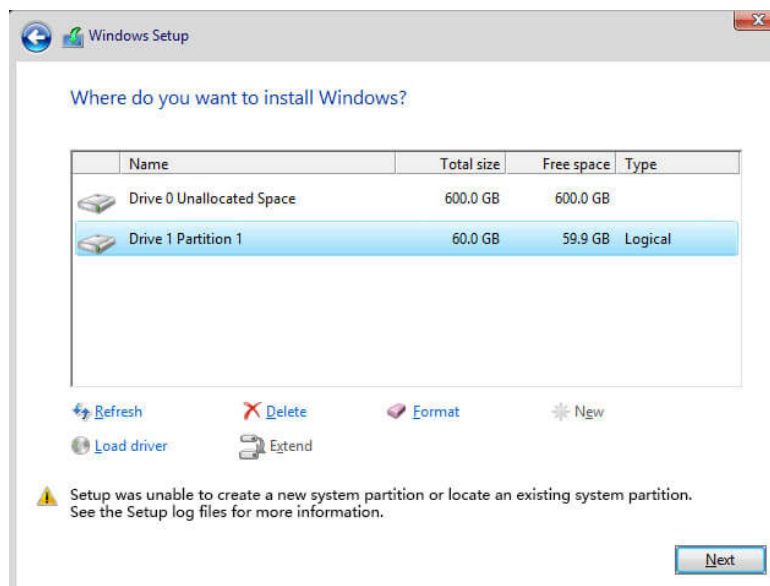
Fix 'Setup was unable to create a new system partition or locate an existing system partition'

If you receive this error message: 'Setup was unable to create a new system partition or locate an existing system partition' while installing Windows 7, 8 / 8.1, 10, then don't miss the following article.

If you receive this error message: '**Setup was unable to create a new system partition or locate an existing system partition**' while installing Windows 7, 8 / 8.1, 10, then don't miss the following article.

Today's article will give you step-by-step instructions on how to fix this problem and start installing Windows 7, but the procedure will be similar on Windows 10/8 / 8.1. Follow the steps provided below to fix this problem.

How to fix the 'Setup was unable to create a new system partition or locate an existing system partition' error when installing Windows



Fix 'Setup was unable to create a new system partition or locate an existing system partition' when installing Windows

1. First, make sure that any external hard drive is removed from the computer. If you are installing windows via a bootable CD or USB, leave them alone.
2. Now, press Shift + F10 to open Command Prompt.
3. In the **Command Prompt** window, type '**diskpart**' and press Enter .

```
Administrator: X:\windows\system32\cmd.exe - diskpart
Microsoft Windows [Version 6.1.7601]

X:\Sources>diskpart

Microsoft DiskPart version 6.1.7601
Copyright (C) 1999-2008 Microsoft Corporation.
On computer: MININT-11MRT7L
```

Type 'diskpart'

4. Then type '**list disk**'. This step will list all hard drives connected to this PC. For example, only one drive (you should only have one drive would be better). We will install Windows on this hard drive.
5. We need to select the hard drive by typing '**select disk 0**'. You can choose another partition if you like.
6. Now type '**clean**' to erase all data on the drive.
7. After you finish, type '**create partition primary size-10000** ' .
8. Now, type '**format fs = ntfs quick**'.
9. Once done, type '**assign**' and press the Enter key.
10. Then type '**active**' and press Enter .
11. Now, enter '**list volume**' to list the partition or drive. It will display the partition you have just created.
12. Now, we will copy the contents of the Windows boot CD drive into drive C.
13. Type **Exit** and then press Enter .
14. Go to the CD drive by typing '**cd e:**' and pressing Enter .
15. Now, type '**xcopy e: c: / e / h / k** ' , then press Enter . It starts copying the installation files from the CD drive to the C drive. It will take some time to copy.
16. Once done, type '**exit**' and press Enter . Now close all open windows and then restart the computer once. After rebooting, the machine will begin to install Windows.
17. Now, you have the option to create a partition for the allocated space.

Once Windows has been installed, you need to edit the boot loader. To remove this black screen from the boot process, follow the steps below.

1. To do that run the Command Prompt with admin rights.
2. Type **bcdedit** and then press Enter .
3. Locate the content '**Description**' and '**Identifier**'.
4. Type '**bcdedit / delete (74253dcc9-effasdr50-3582tvple-5263tlpt-5223thpf)**' , then press Enter .
5. Restart the computer. This time, you will not get a black screen anymore.

You finished reading the article "**Fix 'Setup was unable to create a new system partition or locate an existing system partition'**" edited by the [TipsMake](#) team. We hope this article has provided you with many useful tech tips and tricks. You can search for similar articles on tips and guides. Thank you for reading and for following us regularly.
