

## Fix PST file with Outlook's Inbox Repair tool

In the following article, we will show you how to use the built-in support tool in Outlook, Inbox Repair Tool, also known as Scantpst.exe. In essence, the .pst or Personal Folders file is used for all related components in Outlook (Email, Calendar, Contacts, Tasks ...) ...

**TipsMake.com - In the following article, we will show you how to use the support tool available in Outlook is Inbox Repair Tool, also known as Scantpst.exe. In essence, the .pst or Personal Folders file is used for all relevant components in Outlook (Email, Calendar, Contacts, Tasks .), and many of us must have encountered it. In case it cannot be used because this file is corrupted or affected by some malicious program, malicious code. But you might have trouble finding the Inbox Repair Tool because it is always hidden in the Program Files folder of your system.**

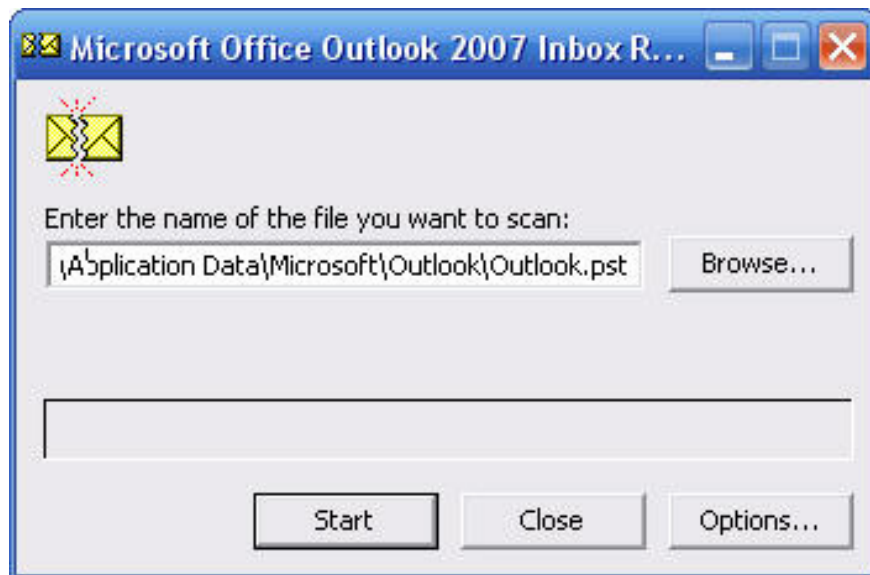
With the version of **Outlook XP** and **2003** , please open the link:

*C: Program FilesCommon FilesSystemMSMAPILocaleID (mostly 1033 values)*

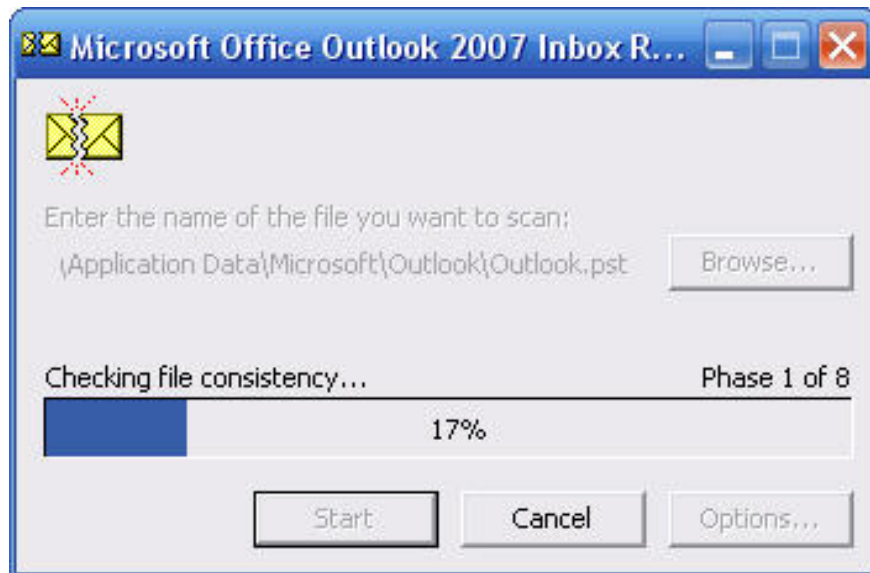
With Outlook 2007:

*C: Program Files Microsoft OfficeOFFICE12*

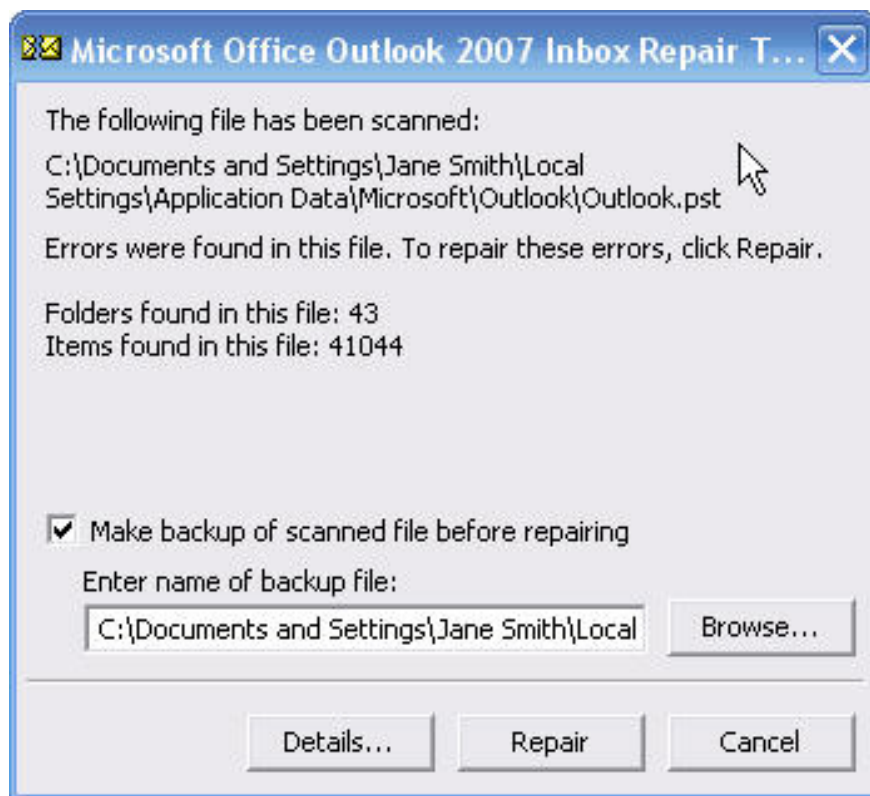
And inside this folder, we will see the **Scantpst.exe** file. When running this file, simply point the link to the directory where the current .pst file is stored through the **Browse** option, then click **Start** :



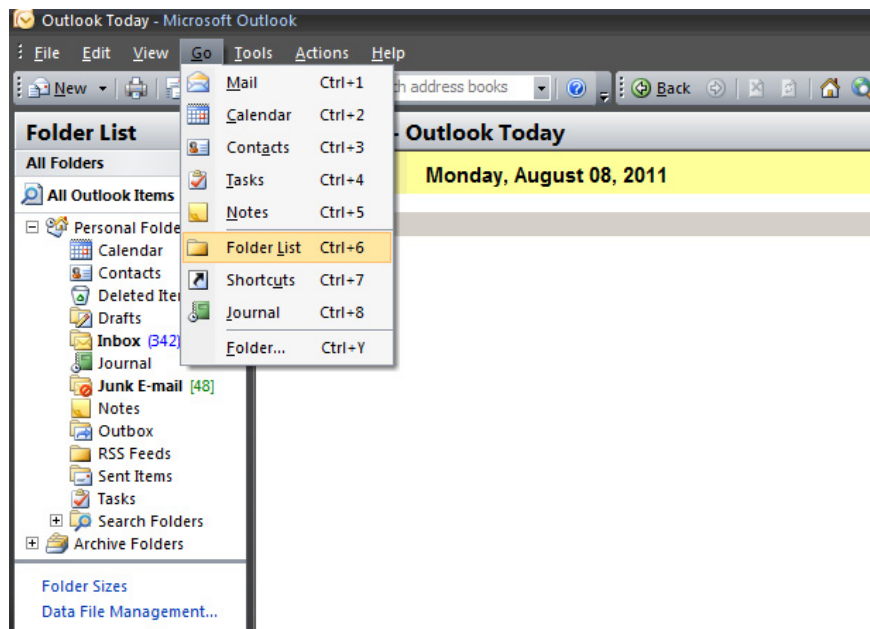
The **Inbox Repair Tool** will proceed to search for .PST files with errors:



In case this PST file can be restored or repaired, you will see a specific notification program as shown below. To repair, click **Repair** button:



When this process finishes, Outlook will create a **Recovered** file next to the old .pst file, and our task here is to adjust Outlook to use the new file instead of the old file. Note that if the Scanpst.exe tool is unable to restore the pst file's operation status, it will require a more powerful "support" program, Stellar Phoenix PST. After installation, select Go> Folder List:



Here, we will see the **Recovered Personal Folders folder** next to **Outlook Personal Folders** as usual, or go with the Lost and Found option. If this folder contains a data file that has been restored, the program will display fully, but if this folder is not available, the recovery process has failed. In case of successful recovery, you need to create a new pst file to transfer data from the restored file. Good luck!

You finished reading the article "**Fix PST file with Outlook's Inbox Repair tool**" edited by the [TipsMake](#) team. We hope this article has provided you with many useful tech tips and tricks. You can search for similar articles on tips and guides. Thank you for reading and for following us regularly.