

Fix PST file errors with Outlook Inbox Repair

Over time, the .pst file (or Personal Folders - used for a lot of things: email, calendar, contacts) in Outlook becomes corrupted. Fortunately, Microsoft 's Inbox Repair Tool includes error - free tools.

Over time, the .pst file (or Personal Folders - used for a lot of things: email, calendar, contacts) in Outlook becomes corrupted. Fortunately, Microsoft 's Inbox Repair Tool includes error - free tools. However, these tools are forgotten in your computer. This article will give you a way to fix the problem with the tool available in Outlook Inbox Repair - Scantpst.exe.

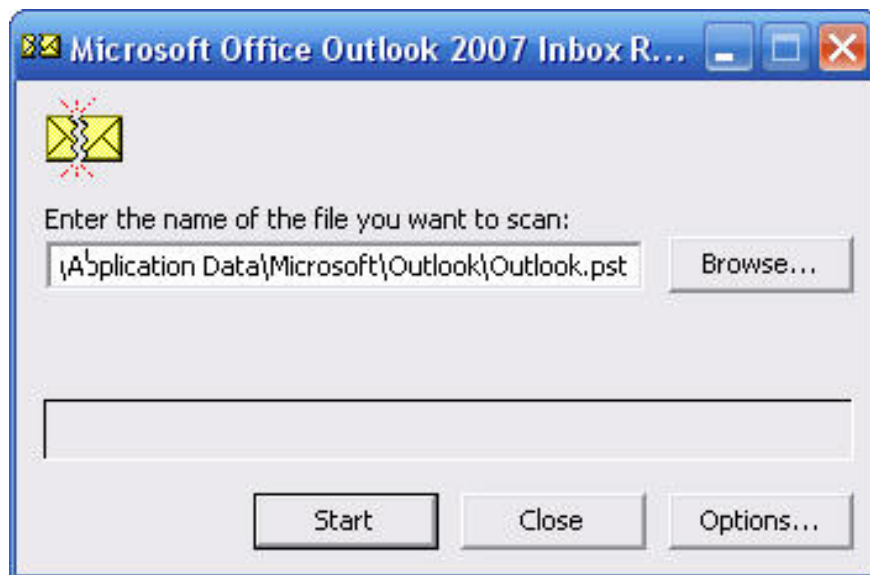
Pst file recovery tool

To use this tool, you must access the link:

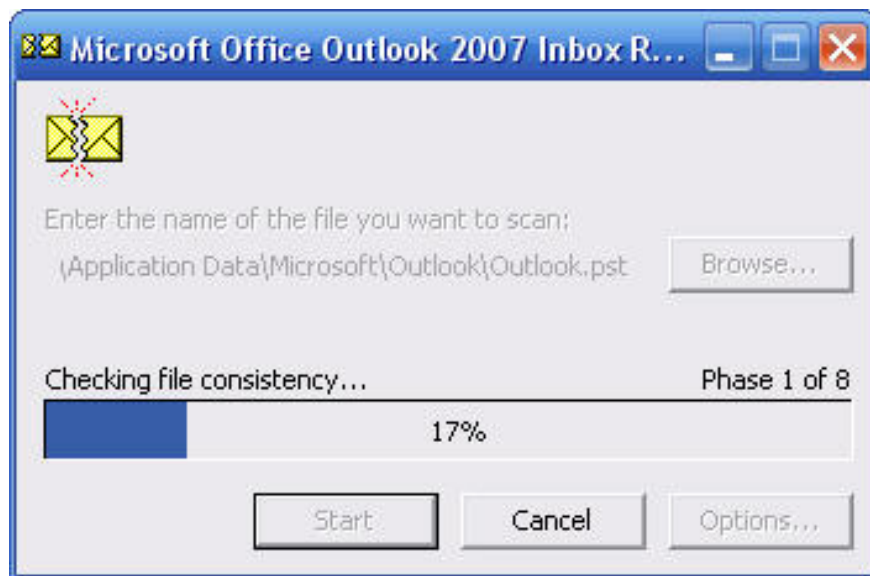
For Outlook XP & 2003: **C: Program FilesCommon FilesSystemMSMAPILocaleID**

For Outlook 2007: **C: Program FilesMicrosoft OfficeOFFICE12.**

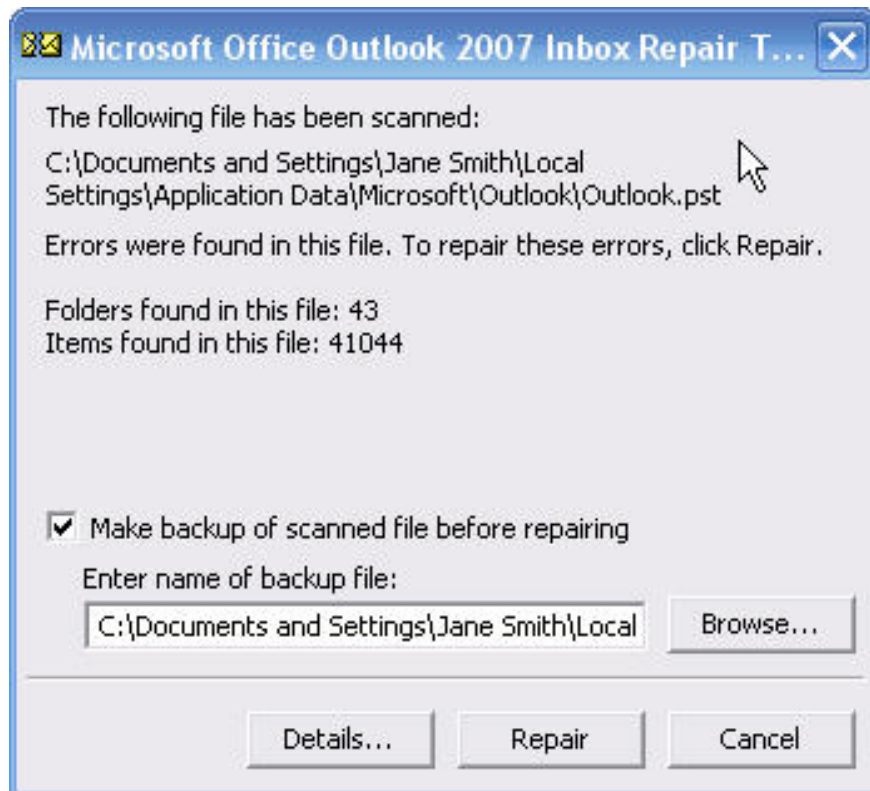
In this folder, you will see the **Scantpst.exe** installation file. When running this file, select **Browse** to your current .pst file and select **Start** :



The tool will scan the .pst file for errors

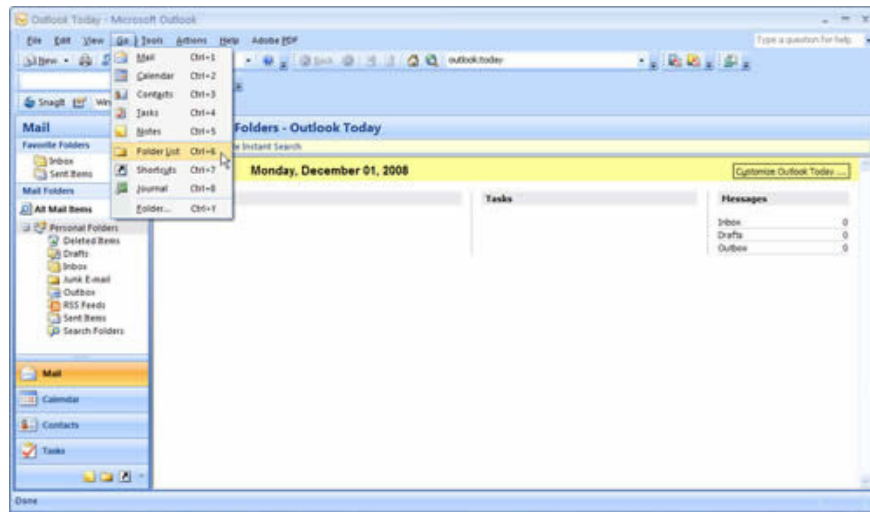


If your PST file can be restored, you will see a recoverable error displayed in the search results. To restore, select **Repair**.



Convert the restored PST file to the new PST file

When the restore process is complete, Outlook will create a Recovered file containing the restored .pst files. You will have to point Outlook to use the new file instead of the old file. You will then have to point Outlook to the restored file: **Outlook> Go> Folder List**



Note : *If Scanpst.exe cannot recover .pst file data, you will have to use a more powerful recovery tool, such as the Stellar Phoenix PST repair utility .*

In the Folder List, you will see the *Recovered Personal Folders* folder or the *Lost and Found* folder. If the *Lost and Found* folder contains a file that has been successfully recovered, the file will be displayed. If the folder is empty, it means the tool has not successfully recovered the data. If the file has been successfully saved, you will have to create a new PST file and transfer the restored data there. Successful data transfer, you can turn off the *Recovered Personal Folders* folder.

You finished reading the article "**Fix PST file errors with Outlook Inbox Repair**" edited by the [TipsMake](#) team. We hope this article has provided you with many useful tech tips and tricks. You can search for similar articles on tips and guides. Thank you for reading and for following us regularly.