

# Fix 'plugged in, not charging' laptop battery error

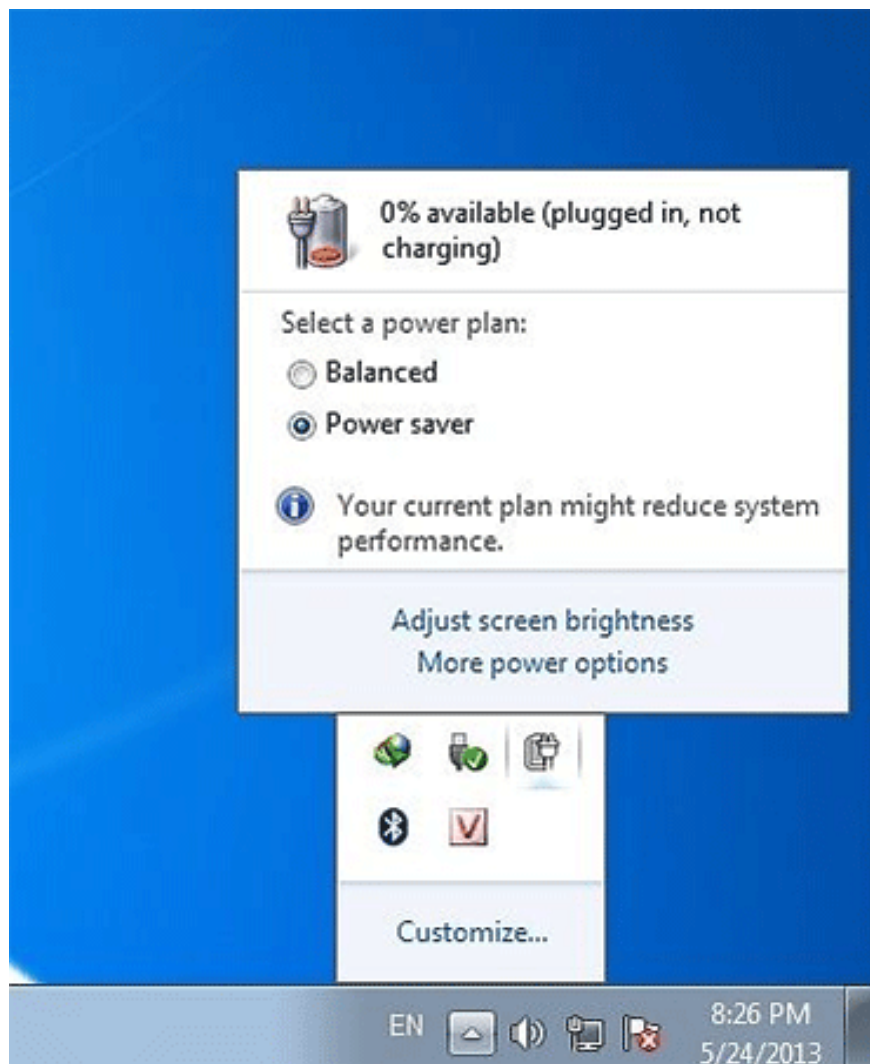
Suddenly someday you see the Plugged in, not charging message, the battery is likely to be having problems and of course you won't be able to charge your laptop battery. If so, this is the fix for you!

Normally, when hovering over the battery icon in the right corner of the laptop screen, you will know the battery percentage as well as the remaining time. However, suddenly someday you see the "Plugged in, not charging" message, the battery is likely to be in trouble and of course you won't be able to charge your laptop battery. So how to fix the charging laptop battery without going into electricity, specifically fixing the "plugged in, not charging" laptop battery error?

1. Instructions for replacing a broken laptop screen
2. Is the laptop charger plugged in when the battery is full?
3. No need to install any software, this is how to check your laptop battery level

## Instructions for fixing "plugged in, not charging" laptop battery errors

A lot of laptop users have a situation where a laptop battery battery doesn't enter the "plugged in, not charging" message like the image below. In fact, the cause of this problem is the fault of the battery control driver driver. You can fix the laptop battery error yourself before bringing it to your shop to make your money and time costly.



### Steps to fix "plugged in, not charging" laptop battery errors

1. Turn off the laptop.
2. Remove the charger from the laptop.



**3.** Gently remove the battery from the computer base. For laptops that use a seamless battery, you must remove the case to remove the battery.

**4.** Reconnect the laptop charger.

**5.** Now restart your computer to enter Windows.



**6.** Next, you access the following link to remove the battery management ACPI drivers: *C ontrol Panel> Device Manager> Batteries*. You then continue Uninstall all the internal folders by right-clicking> select Uninstall.

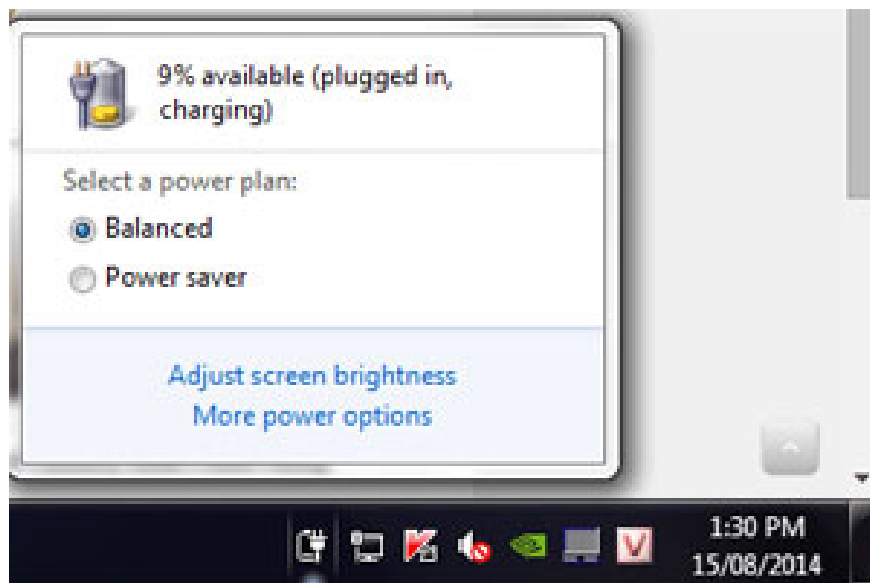
**7.** You turn off the computer again.

**8.** Unplug the device.

**9.** Insert the battery into the device and plug the charger into the computer.



10. Finally, when you start your computer, you will see that the machine automatically recognizes the ACPI battery management driver.



**Note:** If you have followed the above 10 steps and still have not resolved the "Plugged in, not charging" laptop battery error, it is likely that your device will be charged so it will not charge. , do it again in the following way:

1. Turn off the computer.
2. Unplug the laptop battery charger.
3. Remove the computer battery.
4. Plug in the charger.
5. Press and hold the power button for about 30 seconds.

6. Insert the battery, plug in the charger and start the computer.

After performing the above operation, the device still says 'Plugged in, not charging', then the Network Administrator will "give up". The best solution at this point is probably to find a reputable computer repair center for assistance, because your battery may be faulty.

It should be noted, to increase laptop battery life, you should charge the battery and use it, then fully charge it again, doing so 3 times will help the battery work best. In addition, when you find that the laptop battery is bottled, is going to fail, try to recover and improve the performance of the laptop battery that has been subjected to the trick that the Network Administrator previously shared.

Good luck!

See more:

1. Phone does not charge or charge slowly, this is how to handle it
2. Plug the phone charger forever in the socket, so or not?
3. 4 simple ways to check the configuration and hardware information of computers and laptops

You finished reading the article "**Fix 'plugged in, not charging' laptop battery error**" edited by the [TipsMake](#) team. We hope this article has provided you with many useful tech tips and tricks. You can search for similar articles on tips and guides. Thank you for reading and for following us regularly.