

Fix laptop Shutdown but not power off

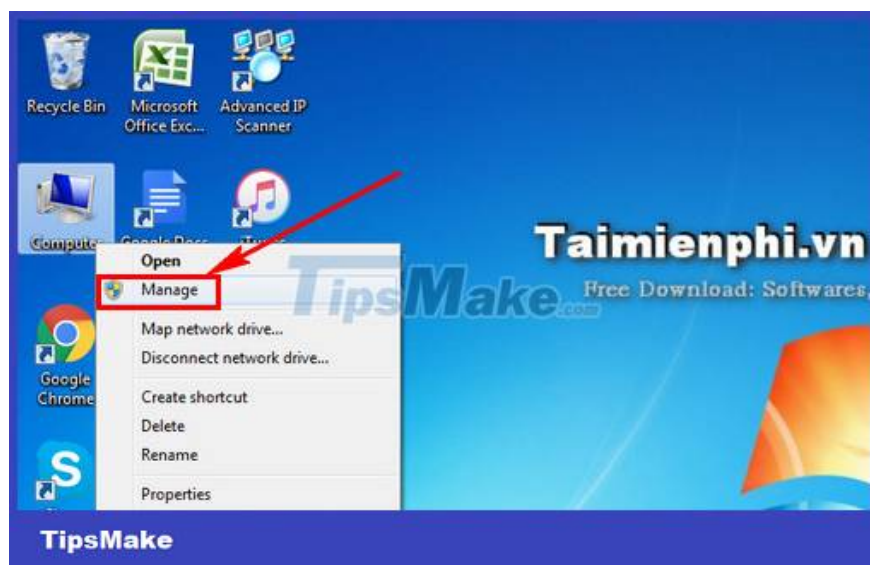
The situation of laptop Shutdown but not turning off is quite common with Windows users. This situation will be troublesome if you turn off the device and do not pay attention, the device will still work and be prone to potential hazards. If the laptop is experiencing this situation, fix the laptop Shutdown error but do not turn off the power immediately.

Almost every modern person, a laptop is an indispensable personal item. However, in the process of use, the owner needs to know how to take care of his laptop, immediately correct the errors when there is a bad phenomenon. Common and recognizable errors such as laptop not starting, laptop shutting down but not turning off are very common. There are many different methods and causes to fix a laptop that won't boot. Users should hope that the error of the laptop not booting comes from the software, because if it comes from the hardware, it is likely that you have to buy a charger, replace the battery, or even replace the laptop screen. Users should find out the reason to fix the laptop not booting completely, avoiding inhibition when using.

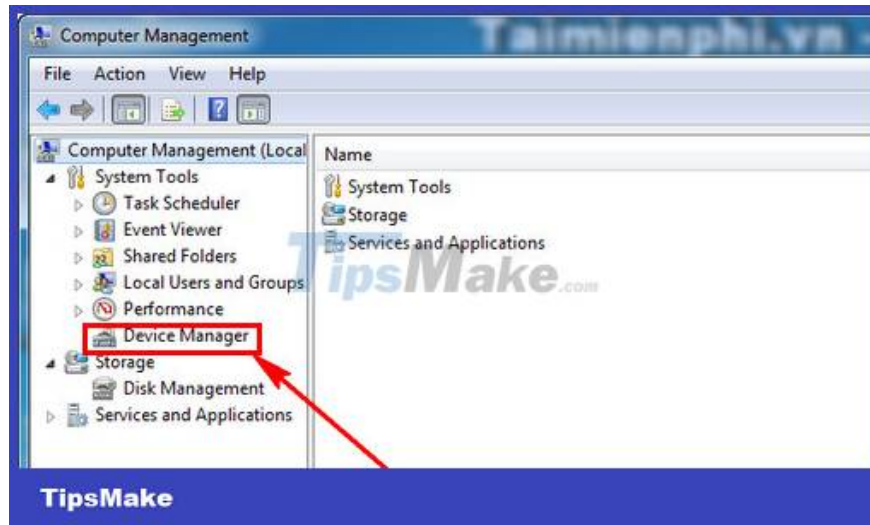
In addition to the error of not being able to start, **the laptop Shutdown error but not turning off the power** is also very inhibited. Many users have their laptops damaged by pressing Shutdown and folding the device into their pocket, then the laptop does not turn off and the temperature from the fan is still running, leading to overheating of the laptop and a very dangerous fire. To avoid such unexpected risks, you should fix the laptop Shutdown error but do not turn off the power immediately when you see this situation.

Fix laptop Shutdown but not power off:

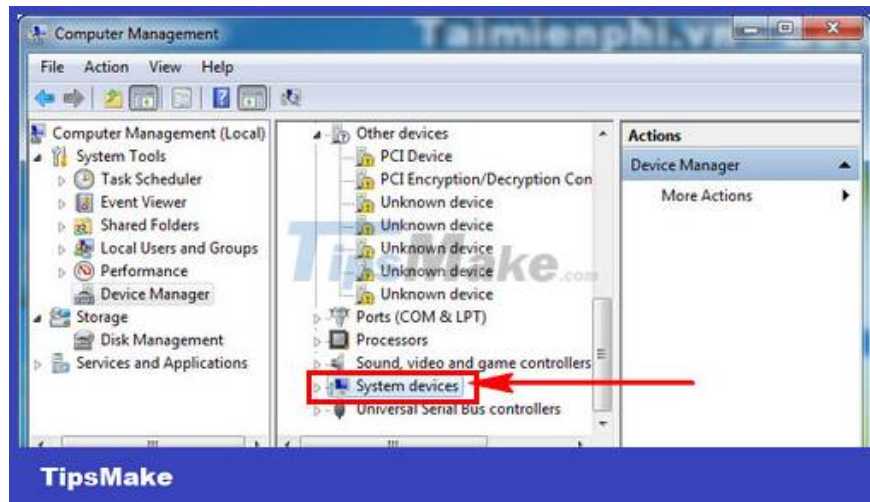
Step 1: Click Start and **search for Manage** . Or you right-click on My Computer and select **Manage**.



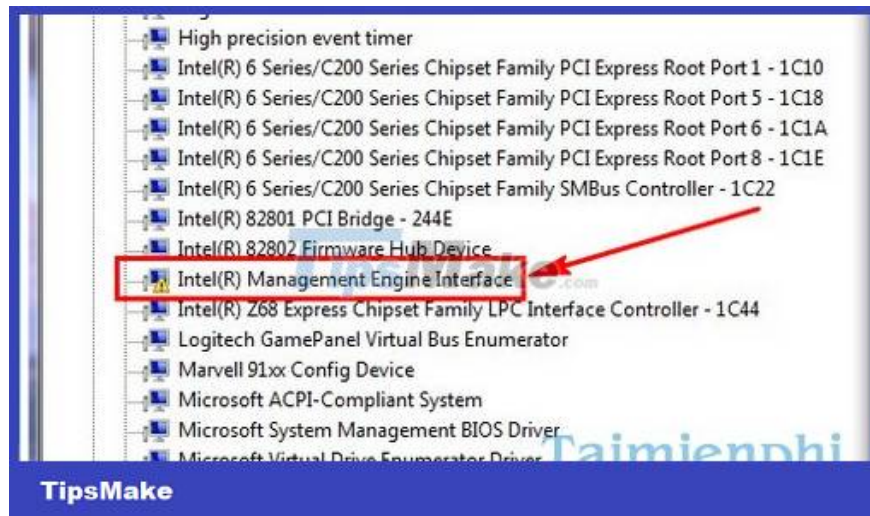
Step 2: In Computer Management, select **Device Manager**.



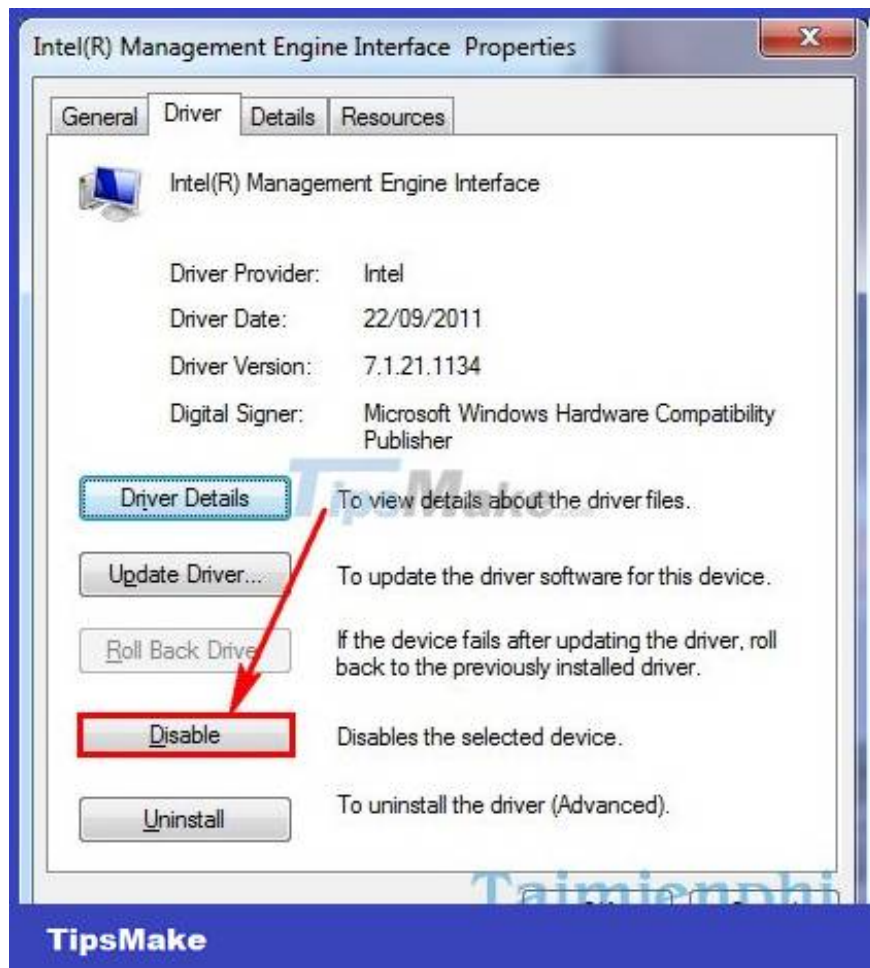
Step 3: The cause of the laptop Shutdown error but not turning off the power comes from **System devices** . Please click on it.



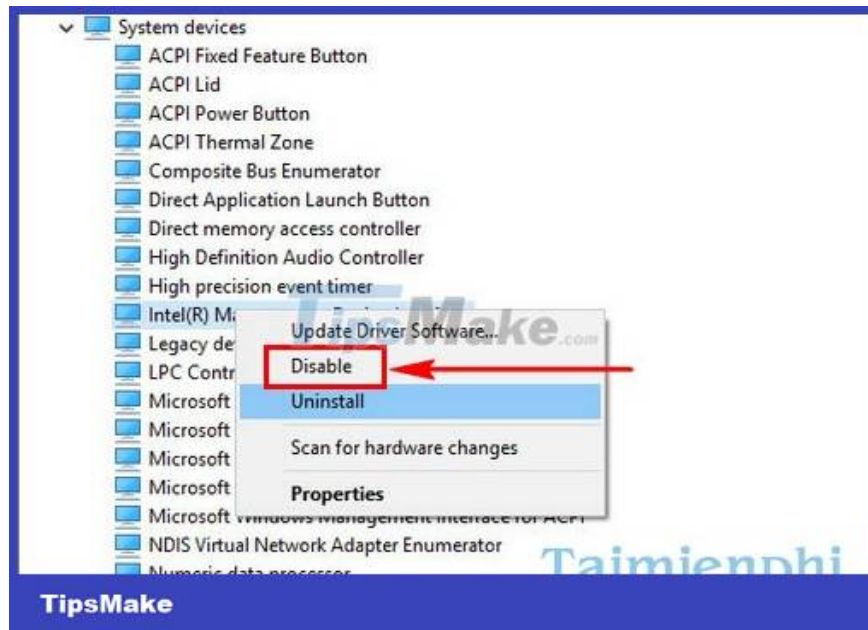
Double -click **the left mouse button** to open the Intel(R) Management Engine Interface.



Step 4: In the Intel(R) Management Engine Interface Properties dialog box . Click **Disabled**.



Alternatively, users can also right-click on Intel(R) Management Engine Interface and select **Disabled** .



Just turn off Intel(R) Management Engine Interface, you will definitely fix the laptop Shutdown error but not power off successfully. This is a very simple trick that can be applied on many different versions of Windows.

Laptop shutdown but not power off is better than the laptop can't shutdown, many of you encounter a laptop that doesn't shutdown often have to use hotkeys (hold the power button) to turn off the computer, so it will be very harmful to the machine, there are many causes leading to this problem. the laptop does not shutdown and restart, you need to learn carefully and fix this problem soon.

Another problem is also related to the laptop but more serious than the laptop Shutdown error but does not turn off the power. That is a laptop error or restarting can't enter Windows. The cause of this problem also has many, possibly due to battery, charger or laptop overheating. If the computer cannot be used, cannot enter Windows, which means that the user cannot use it. So fixing the laptop restart is a must-do. Let's see the causes and how to fix the error of restarting laptop and not being able to enter Windows to save your computer.

Computer lost sound is one of the common errors with users today, when you encounter this error, you will not be able to hear the sound coming from your computer. It's not simple, you need to find out the cause of this error, in that case, it will be successful to start fixing the computer's loss of sound.

<https://thuthuat.taimienphi.vn/sua-loi-laptop-shutdown-nhung-khong-tat-nguon-23967n.aspx>

Laptop with battery charging error can't come in due to many different reasons, possibly due to faulty battery bottle, due to the power cord . if you can't determine what is the cause of this error, the fix is ??very difficult, you should refer to the article on fixing the laptop battery charging error to find out the cause. As well as how to fix the laptop battery not charging error.

You finished reading the article "**Fix laptop Shutdown but not power off**" edited by the [TipsMake](#) team. We hope this article has provided you with many useful tech tips and tricks. You can search for similar articles on tips and guides. Thank you for reading and for following us regularly.