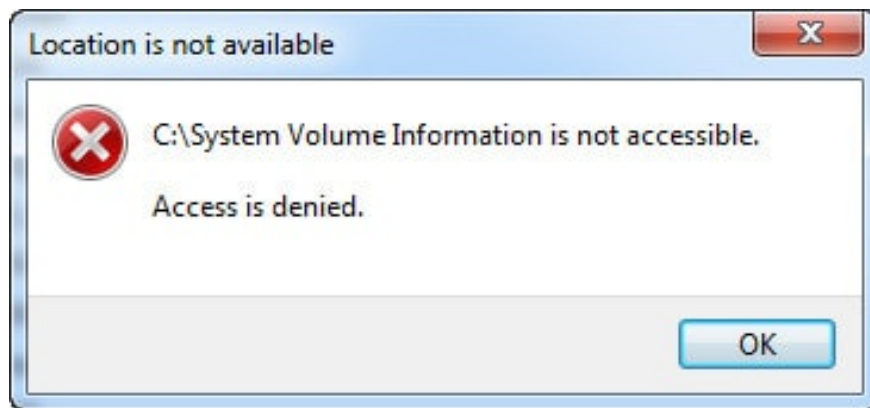


Fix 'is not accessible & Access is denied' error

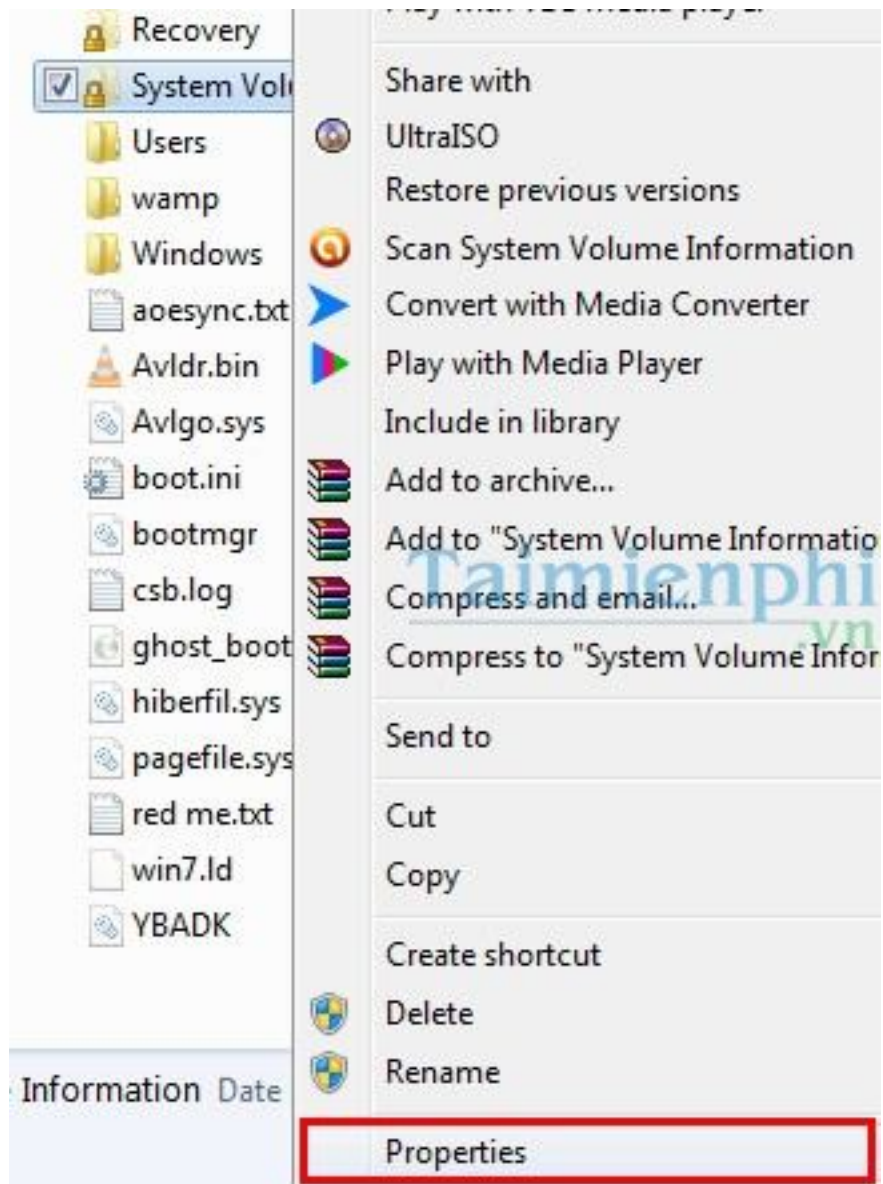
After reinstalling the operating system, you encounter the error is not accessible & Access is denied, unable to access the folder on the drive, so what should you do? The following article will guide you how to fix it, please refer to us.

With the error " **Library-ms** " the library (Documents, Videos, Music, Pictures) on your computer cannot be accessed, you can reinstall Windows and it will go away, but with the error "is not accessible & Access is denied" that you encounter Yes, even if you reinstall the operating system, it cannot be fixed. So to fix it, please follow the steps below.

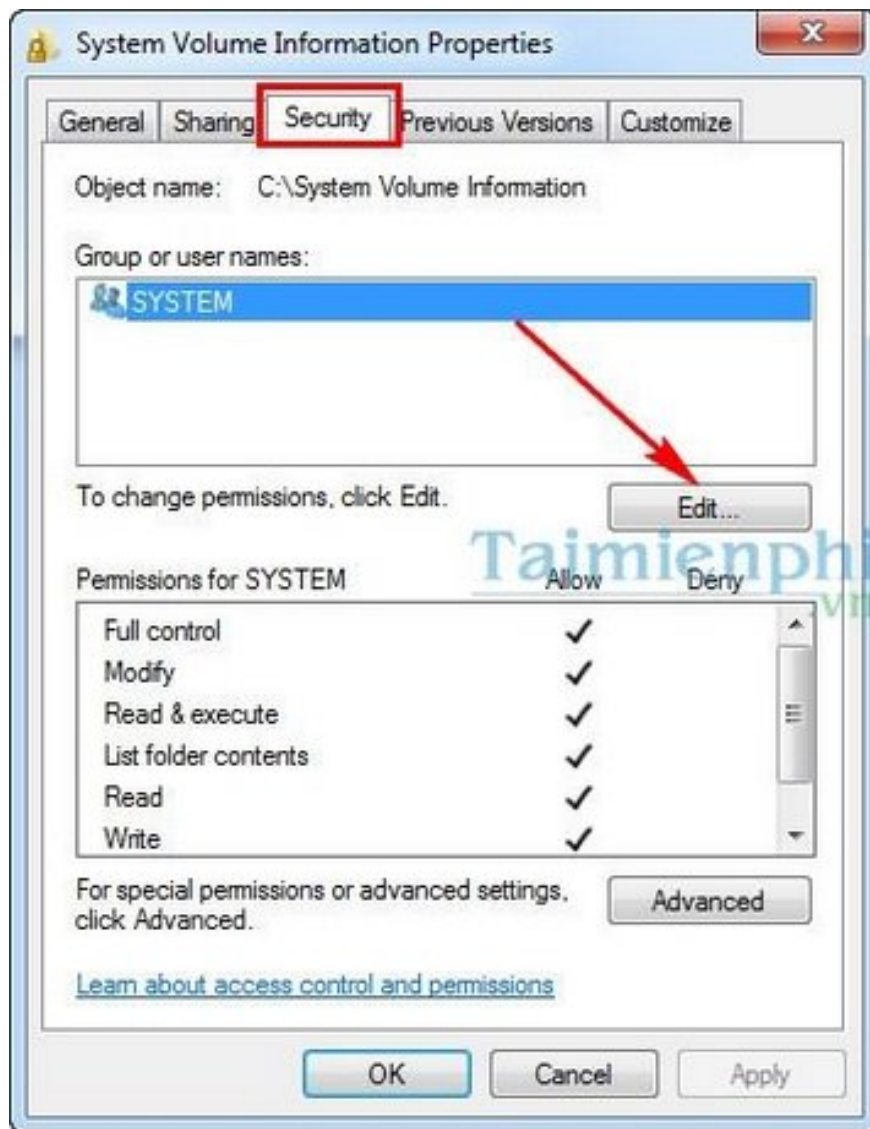


Fix "is not accessible & Access is denied" error

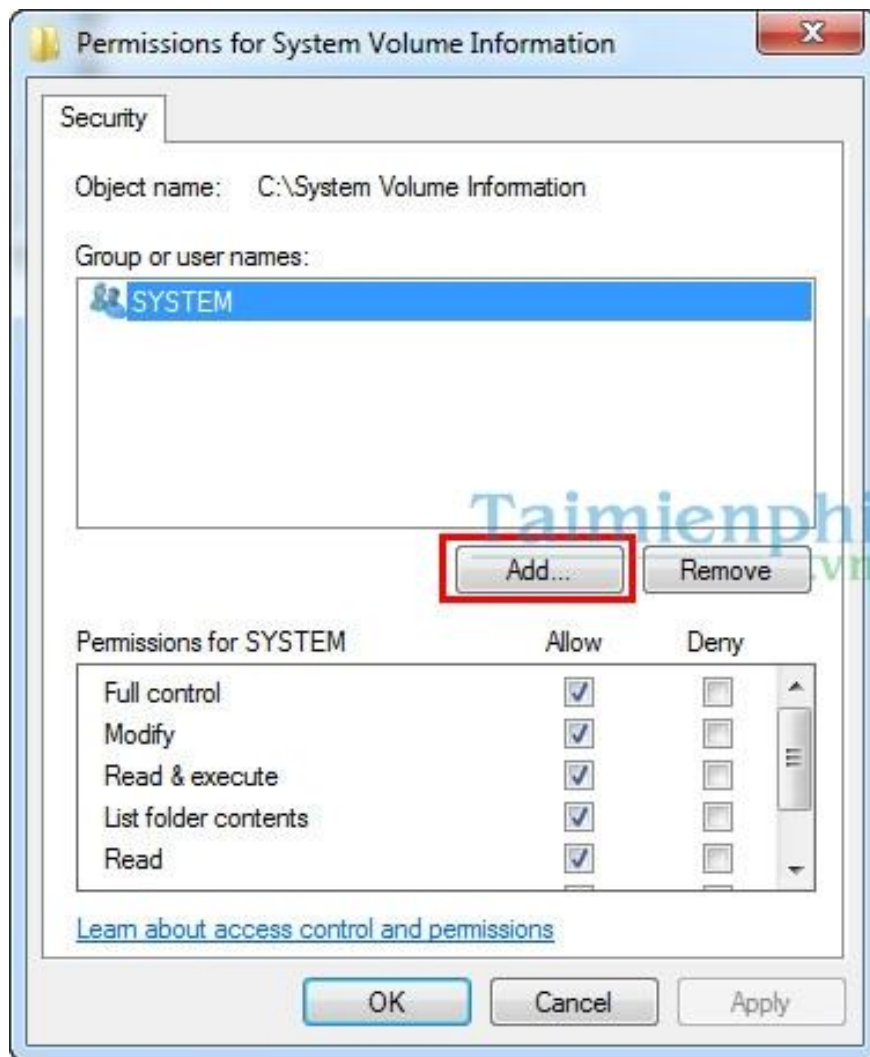
Step 1: Right-click on the folder or drive with the error message and select **Properties**



Step 2: At the **Security** tab, click **Edit**



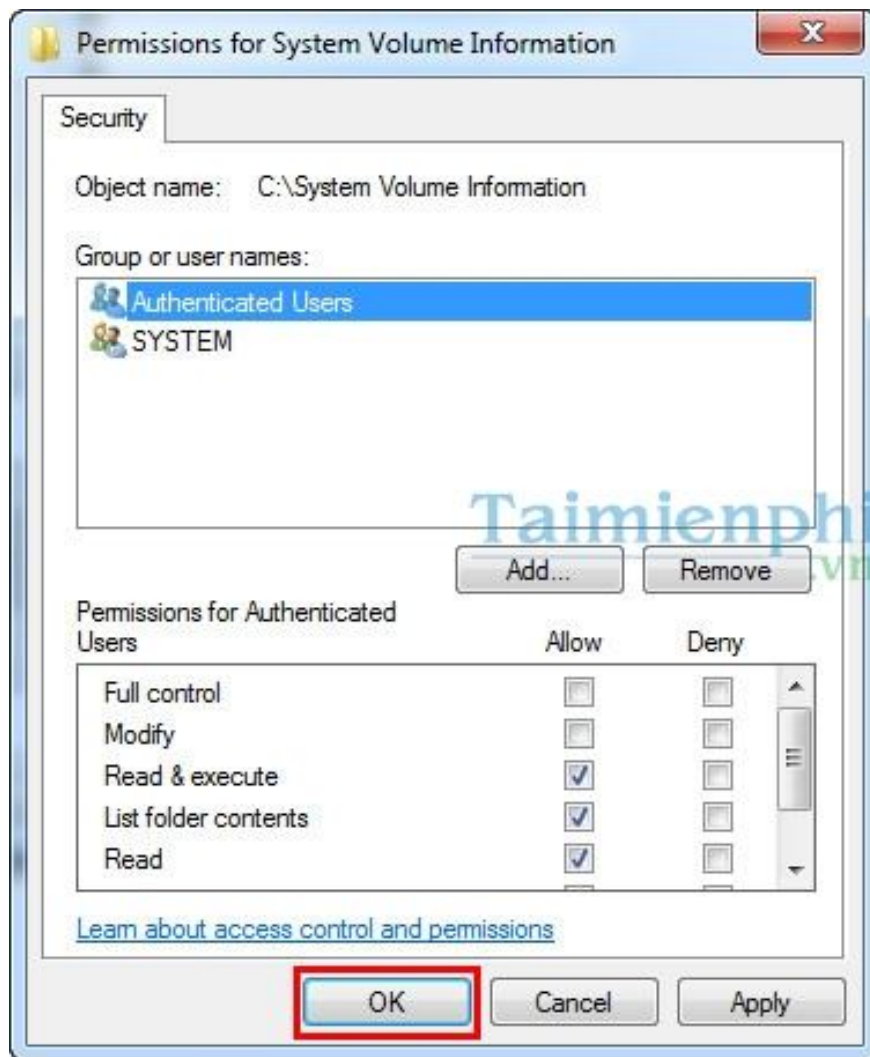
Step 3: Click **Add**



Step 4: Enter " **authenticated users** " then click **Ok** .



Then " **Authenticated Users** " will appear. Click **Ok** to close all windows and check the results.



So with the above article, we have shown you how to fix the error is not accessible & Access is denied. In addition, to fix system errors, you can use error fixing software on our website such as: 7 Quick Fix, XP Quick Fix, FixWin. Wish you success!

You finished reading the article "**Fix 'is not accessible & Access is denied' error**" edited by the [TipsMake](#) team. We hope this article has provided you with many useful tech tips and tricks. You can search for similar articles on tips and guides. Thank you for reading and for following us regularly.