

Fix IDM Integration error removed from Chrome by Google

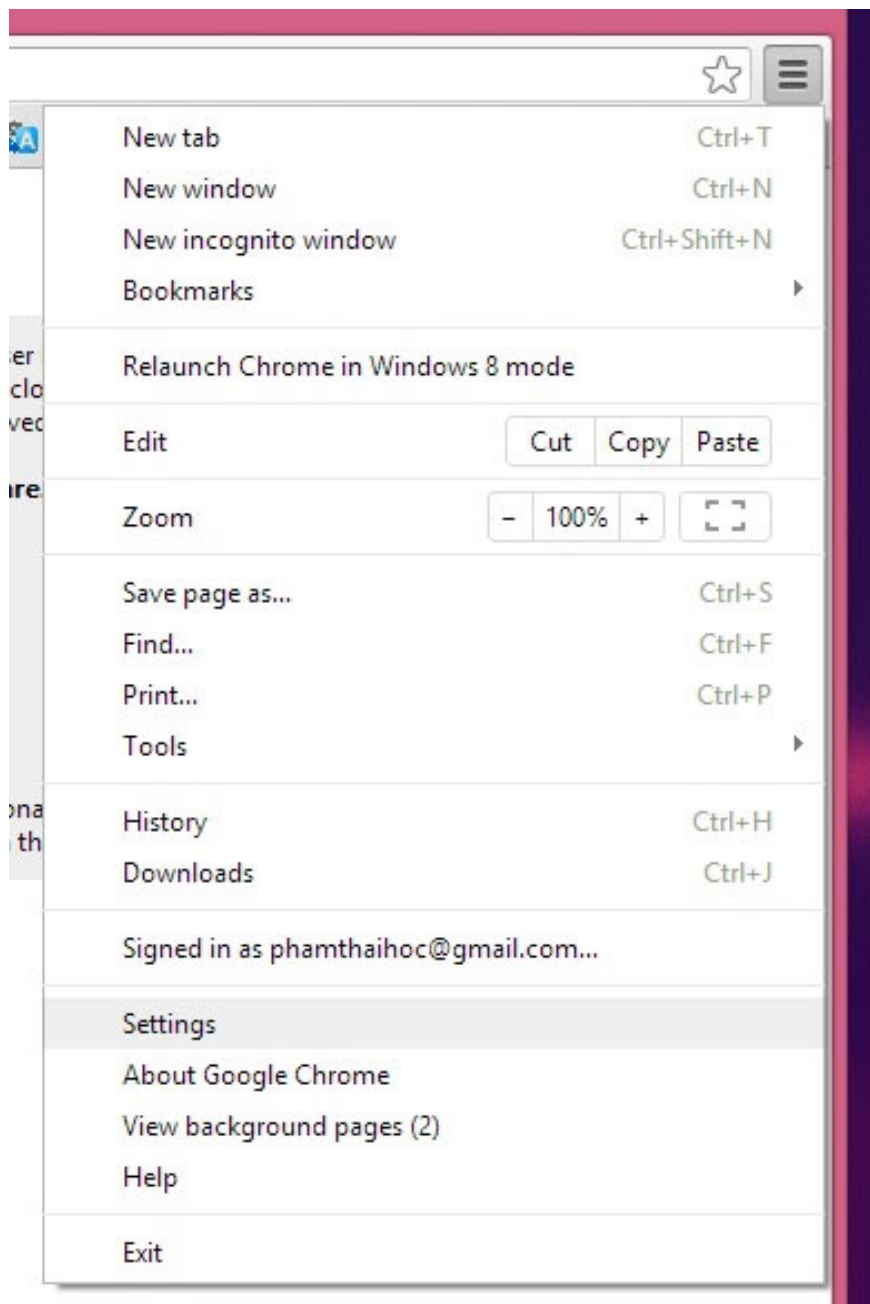
For some reason, Google automatically removed the IDM Integration utility from the Google Chrome browser, it was learned that Google classified IDM Integration into a malicious application group and had to remove it.

For some reason, Google automatically removed the IDM Integration utility from the Google Chrome browser, it was learned that Google classified IDM Integration into a malicious application group and had to remove it.

For users of Google Chrome English, there will be a " *Google has flagged IDM integration has malicious* " message and Vietnamese will be " *IDM integration has been automatically removed* " or " *IDM integration is malicious and the installation has been block* ".

And the following is how to fix:

Go to the options section -> Settings.



Click show advanced options (*Show Advanced Setting*).

Default browser

The default browser is currently Google Chrome.

[Show advanced settings...](#)

Uncheck " *Enable phishing and malware protection* " (*Enable phishing and malware protection*).

Privacy

Content settings...

Clear browsing data...

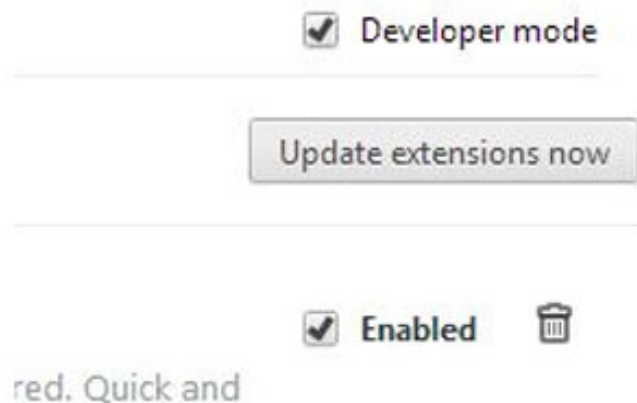
Google Chrome may use web services to improve your browsing experience. You may optionally disable these services. [Learn more](#)

- Use a web service to help resolve navigation errors
- Use a prediction service to help complete searches and URLs typed in the address bar
- Predict network actions to improve page load performance
- Enable phishing and malware protection
- Use a web service to help resolve spelling errors
- Automatically send usage statistics and crash reports to Google
- Send a 'Do Not Track' request with your browsing traffic

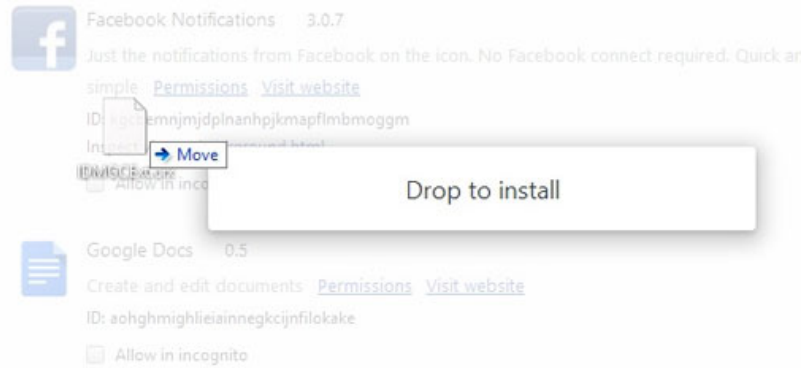
Then go to folder **C: Program Files (x86) Internet Download Manager (With Windows 64bit)** or **C: Program FilesInternet Download Manager with Windows 32bit** version and copy the file "**IDMGCExt.crx**" to the Desktop.



Continue to open Google Chrome and access the "`chrome://extensions/`" link, then check the "*Developer mode (Developer Mode)*" option.



Then drag the **IDMGCExt.crx** file from Desktop to Google Chrome browser.



And this is the result.



Note : please check the option " *Allow access to file URLs* " again.

Good luck!

You finished reading the article "**Fix IDM Integration error removed from Chrome by Google**" edited by the [TipsMake](#) team. We hope this article has provided you with many useful tech tips and tricks. You can search for similar articles on tips and guides. Thank you for reading and for following us regularly.