

# Fix high ping errors when playing games

During the game, a high ping error will cause the screen to continue to be jerky, the action is always late, greatly affecting the playing process as well as the outcome of the match. So how to deal with high ping problems?

You are playing a good game, shooting any shot that hit. Suddenly, the screen had a twitching situation, and the gun fired at the enemy forever after the enemy had fallen made the game speed significantly reduced. And few people are comfortable when playing, all actions or actions are much slower. So you have a high ping error.

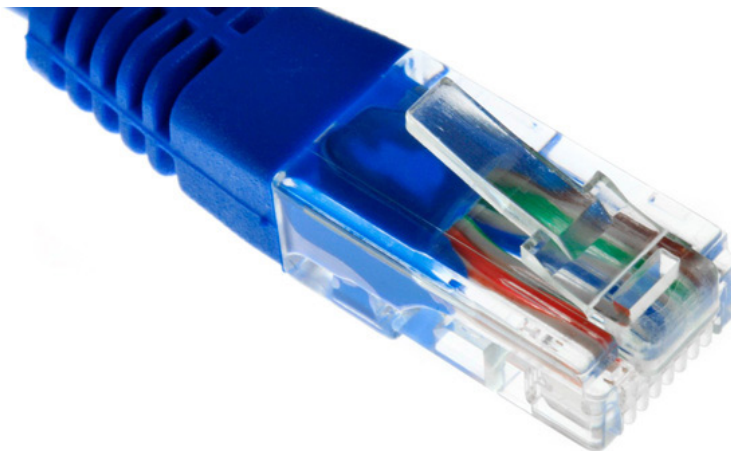
## What is a ping? Effect of high Ping?

High Ping understands latency during game play. Whenever you perform an operation while playing, the data will be transferred to the server for processing and then send the results back to the gamers. And how long will that take to be calculated by ping. If the process is slow, the machine will be stalled, creating latency during the game. The usual ping currently ranges from 30 - 60ms, equivalent to 0.03 - 0.06 seconds. However, if ping up to 300ms - 500 ms will create a high latency, which affects gamers' high score recording journey.

## Instructions to fix high ping errors when playing games

### 1. Using quality network wires:

Using Wi-Fi when playing games sometimes makes ping stability uneven, and of course gamers will not like that. You are killing the good enemy with your teammates with a ping of 60 ms, and it goes up to 300ms so everything shatters. Therefore, the advice for those who play games who want to ping well and stable should choose a good wire network.



There are currently several types of wires in the market such as Cat5e, Cat6A and Cat6A, in which Cat6A is the best type of network cable. The better the network wire, the better the resistance to noise and bandwidth, especially in the case of long-distance transmission. It is also a good idea to avoid using too long network cables from the modem / router to the PC.

## 2. Modem / Router good:

Of course, low-cost modems often have low sides, which are easy to malfunction during use, such as overheating, restarting automatically when you use them for a long time.

So choosing a new, good modem is an effective plan, the running time will be longer, more durable and without special errors to ensure a more stable network.



## 3. Using WTFast software:

1. Download the free WTFast software

This software will allow game players to connect to intermediate servers, helping to reduce ping extremely efficiently. The software supports most online games and gaming services including Steam, Origin or Battlenet. WTFast allows a 15-day trial, but if you invest heavily, it is worth it.



#### 4. Using the main game support board:

Computer hardware manufacturers always apply many advanced technologies, help optimize the experience for each gamer, including the mainboard. These motherboards are integrated with many high-end technologies for gamers, including latency network connectivity. However, this option has not been proven. But if you qualify and play, you can invest.



#### 5. Upgrade line:

This method is also quite effective to create ping stability when playing games. Higher packages, higher connection speeds will ensure speed when playing games.

The above are ways to fix high ping errors when playing games for readers to read and apply. Depending on the ability of each friend to choose the appropriate remedy. Don't let pings hurt you to defeat the enemy, but also get scolded by your teammates.

## Refer to the following articles:

1. Speed up network and Internet access
1. How to fix when losing Internet connection
1. How to avoid traffic congestion in the home network

## Hope this article is useful to you!

You finished reading the article "**Fix high ping errors when playing games**" edited by the [TipsMake](#) team. We hope this article has provided you with many useful tech tips and tricks. You can search for similar articles on tips and guides. Thank you for reading and for following us regularly.