

Fix Google Sheets not allowing spreadsheet editing

In some cases it may be due to an issue or error that Google Sheets does not allow spreadsheet editing. The following TipsMake article will guide you on how to fix it

Similar to other applications like Google Docs, Google Sheets also allows users to collaborate on spreadsheets in real time. Error Google Sheets does not allow editing spreadsheets, does not allow users to enter text, formulas in real time is one of the common errors that users often encounter. There are many causes of this error.

How to Fix Google Sheets not allowing spreadsheet editing

Method 1: Fix basic Google Sheets errors

The easiest way to fix Google Sheets not allowing spreadsheet editing and other common sheet errors is to try disabling and reopening the browser to reload the page. There is also another temporary fix is ??to restart the computer.

If the error still persists, please refer to some next fixes below.

Method 2: Use the Google Sheets app on your phone

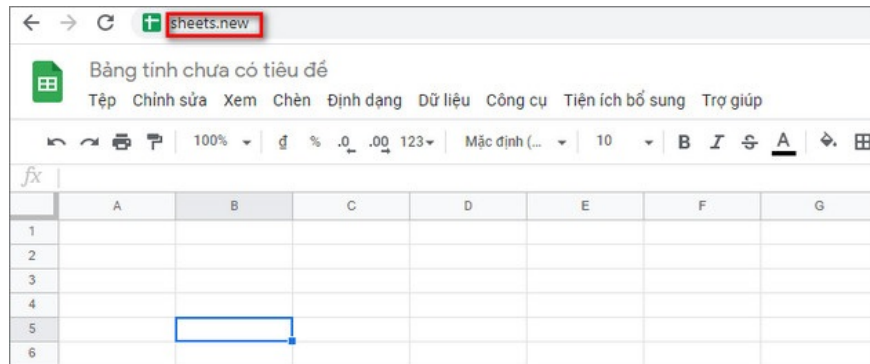
In case if none of the above works, try using the Google Sheets app on your phone and enter text, edit the spreadsheet and check if the error persists.

Also you can use Sheets on other browsers like Firefox, Edge, Chrome and see if the same error still exists.

Method 3: Copy into a new Google Sheets file

Assuming the above methods don't work, try opening a new Google Sheets file and copying the contents of the corrupted file, preventing editing the spreadsheet to see if it helps.

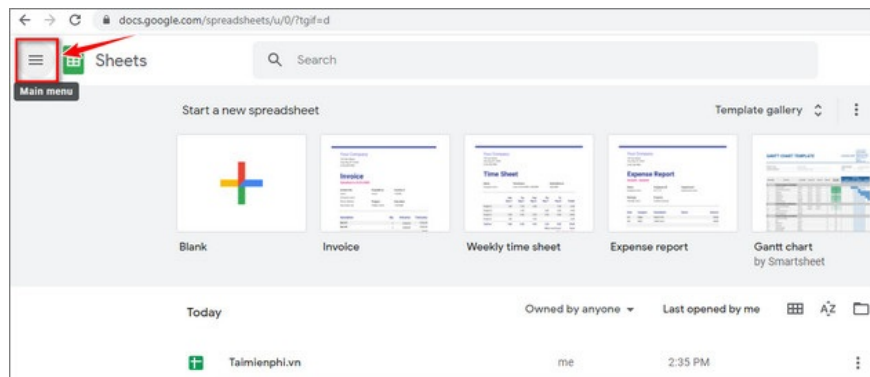
All you need to do is type "sheets.new" into your browser's address bar and press Enter to open the new file. The next step is to copy the contents of the corrupted file and paste it into the new file. If the error persists, it's probably because the file owner has set view-only permissions and doesn't allow you to edit.



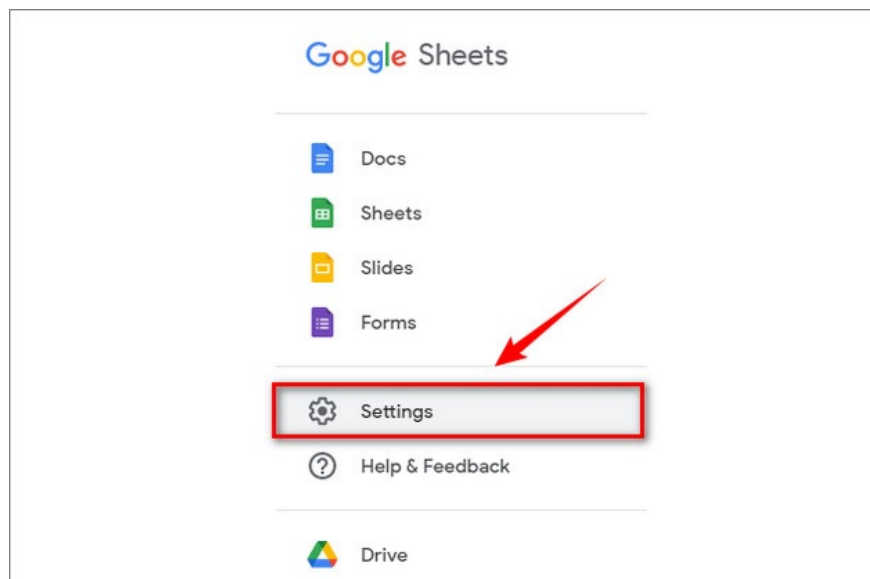
Method 4: Use Google Sheets Offline

Sometimes the network connection that you are using is unstable or too slow can be the cause of Google Sheets errors. To fix the error, the ideal solution in this case is to use Google Sheets Offline, offline.

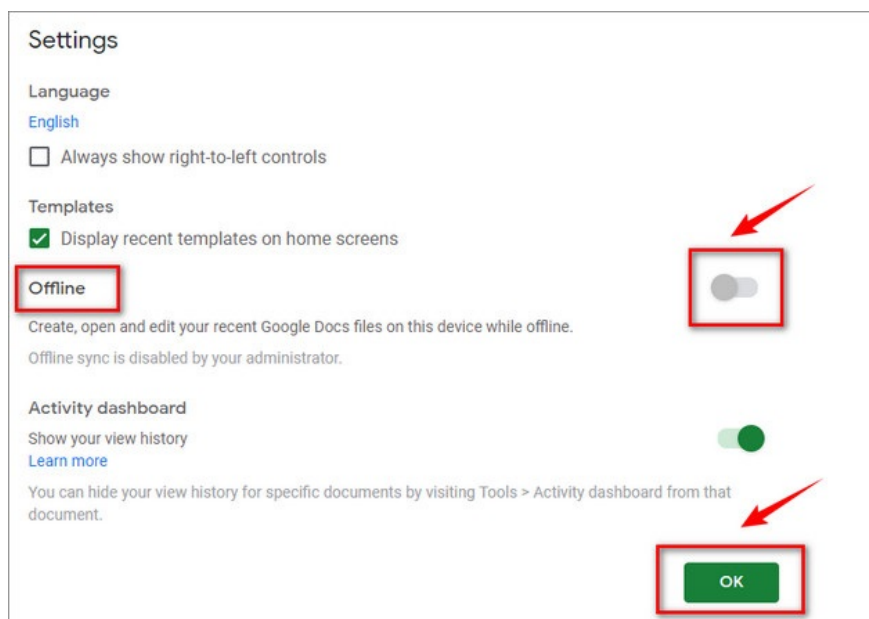
To do this, first visit the Google Sheets homepage, where you find and click on the 3-line dashed icon in the top left corner of the screen as shown below:



On the window displayed on the screen, select Settings.



At this point, the Settings window will appear, where you can find and click the slider next to the Offline option to activate it.



When offline, all changes you make to your Google Sheets spreadsheet will be saved on your computer and synced when connected to the Internet.

Method 5: Sign in your Google account

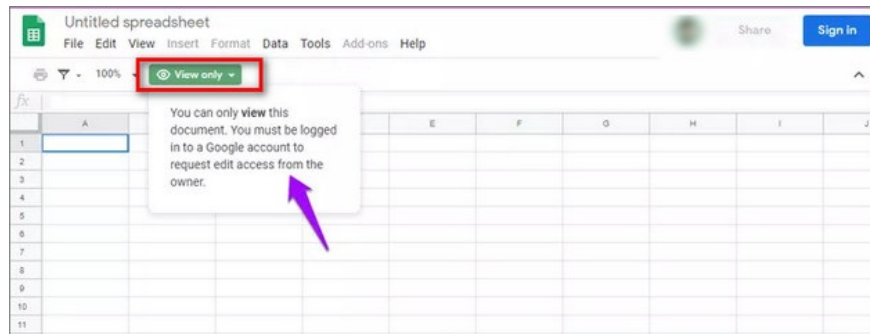
To be able to edit or import documents and documents in Google Sheets, Docs and Slides requires you to sign in with your Google account before.

By clicking on the View only button, which is an eye-shaped icon as shown below, and if the screen displays a message asking you to login to your Google account, proceed to login and see the error. Google Sheets didn't even.

Method 6: Request permission to edit

One note is that if the owner of the Google Sheets file gives you permission to view only, it means that you can only view the file and not make other modifications or changes.

If you make corrections, an error message will appear on the screen. In this case, the only way is to ask the owner to grant you editing permission. To do this, click the View Only button and ask for editing permissions.



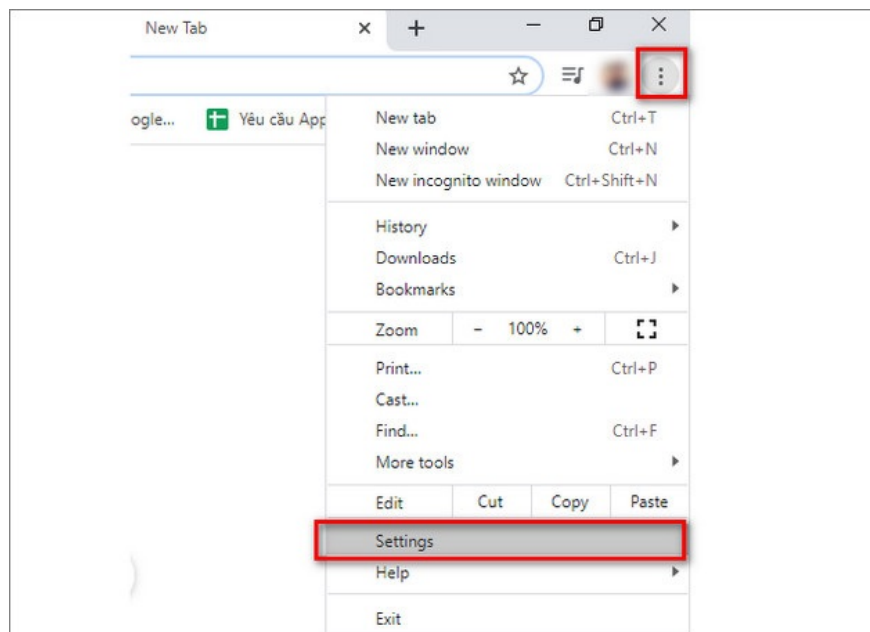
Method 7: Clear data and browser cache

App data and cache files can also be the cause of Google Sheets failure to edit spreadsheets. To fix the error, it is ideal to clear the browser cache and data.

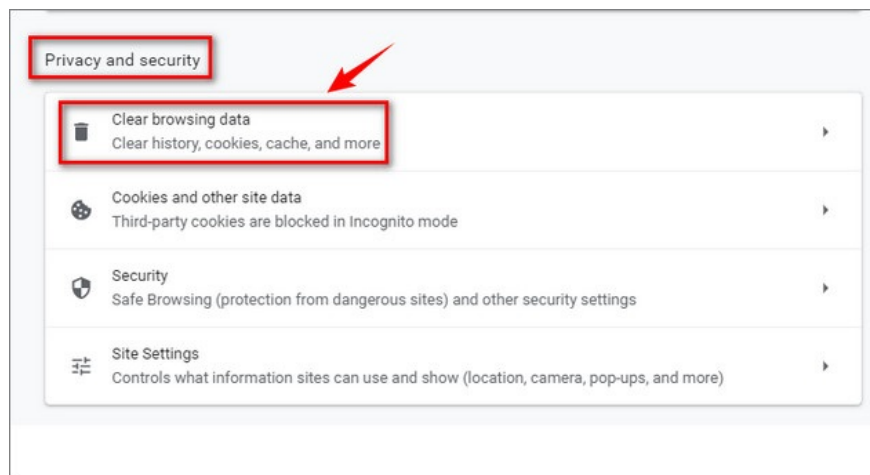
Note: This way will delete all your browsing data as well as sign out all your browser accounts.

Follow the steps below:

First, on the Chrome browser window, find and click the 3-dot icon in the top right corner of the screen, and select Settings.

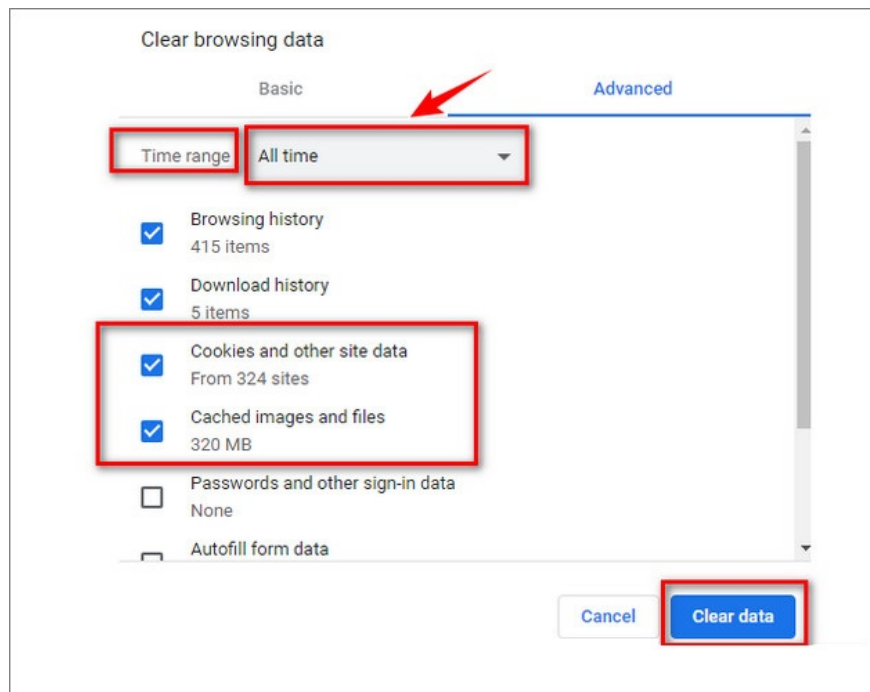


In the Privacy and security section, find and click Clear browsing data.



On the screen that appears on the screen, in the Advanced tab, find and check the box next to the Cookies and other site data and Cached images and files options.

Also in the Time range section, select All time and then click the Clear data button to clear all browsing data.



Once the process is complete, sign in to your Google account again and try opening Google Sheets again to see if the edit is made.

Sign back in to your Google account and open the Sheets file. Does the worksheet let you import or edit it now?

Good luck.

You finished reading the article "**Fix Google Sheets not allowing spreadsheet editing**" edited by the [TipsMake](#) team. We hope this article has provided you with many useful tech tips and tricks. You can search for similar articles on tips and guides. Thank you for reading and for following us regularly.
