

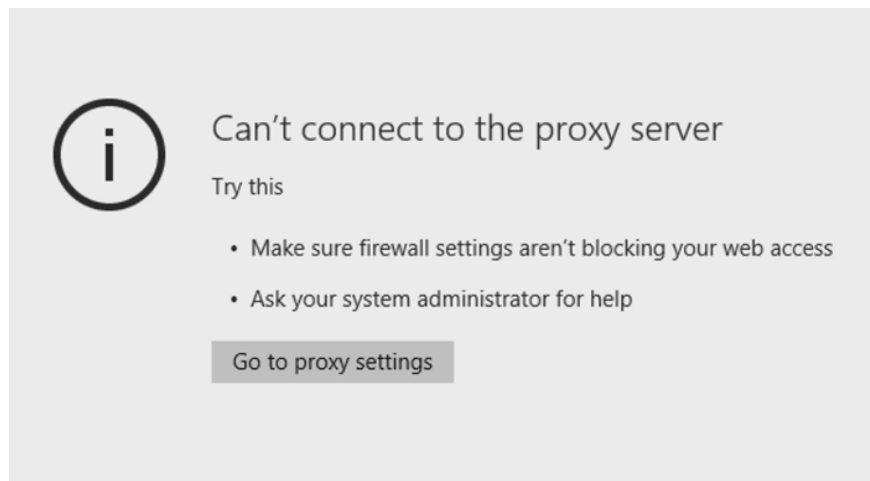
# Fix error Can't Connect to Proxy Server on Windows 10

Sometimes in some cases when using a Windows 10 computer to access a Web page on the browser, users often encounter errors Cannot connect to the proxy server. So how to fix this error and connect to the Web site you want to access.

Sometimes in some cases when using a Windows 10 computer to access a Web page on the browser, users often encounter errors **Cannot connect to the proxy server.**

This error makes you unable to access your favorite websites. If you have tried to scan for viruses and there is no problem, it is probably due to the proxy settings on the computer.

So how to fix this error and connect to the Web site you want to access? Please follow some troubleshooting ways **Can't connect to the proxy server** below of TipsMake.com.



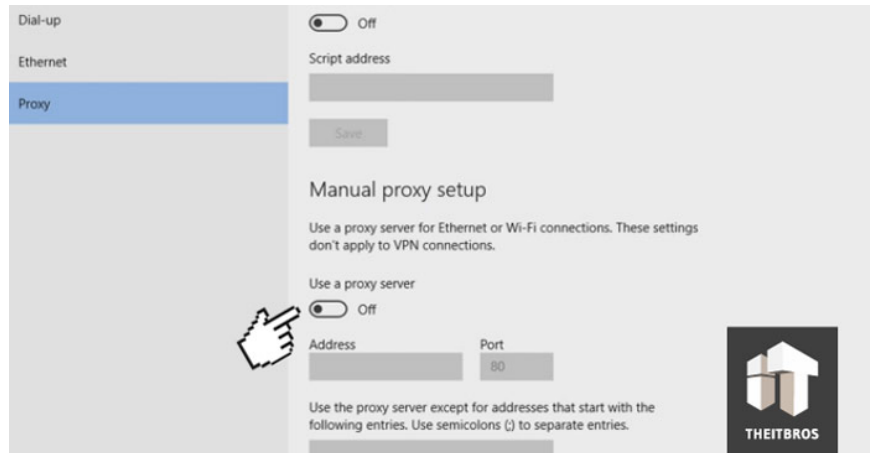
## Bug fixes Can't connect to the proxy server

1. Method 1: Disable Proxy Server
2. Method 2: Check Internet Properties
3. Method 3: Use the Windows Registry
4. Method 4: Use Command Prompt
5. System Restore
6. Factory reset (full reset)

## Method 1: Disable Proxy Server

To disable Proxy Server, first click on the **Start** button, select **Settings** .

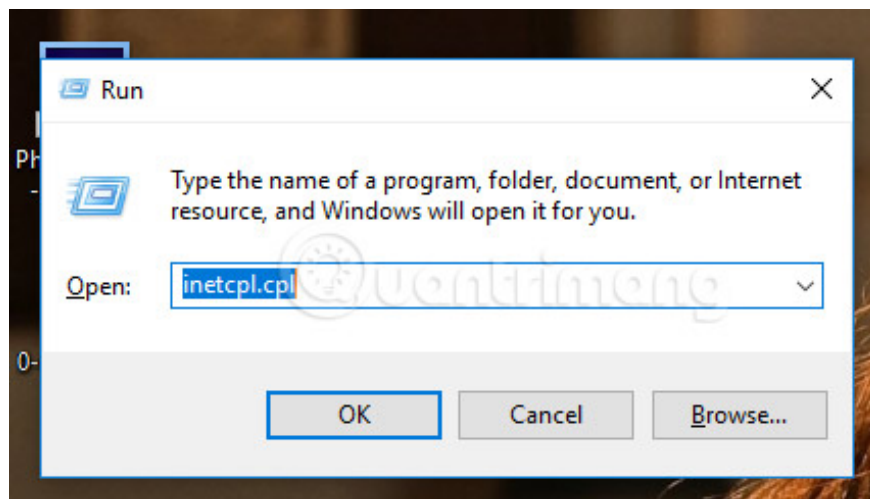
On the Settings interface, select **Network & Internet** , then select Proxy in the list on the left pane. You should now see the Manual proxy server option. Here you turn off the **Use a proxy server feature** .



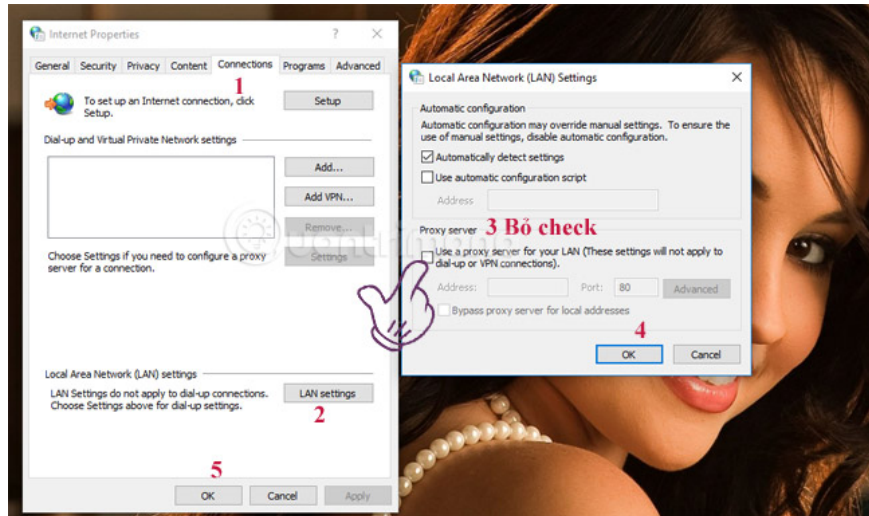
Now you can proceed to open the browser and try to access any website you want. If you can't do it this way, see the ways below.

## Method 2: Check Internet Properties

Press **Windows + R** key, enter **inetcppl.cpl** > **OK** (You need to run it under admin). Or you can click **Start** > enter **ieplorer.exe** > right-click **Internet Explorer** and select **Run As Administrator** .



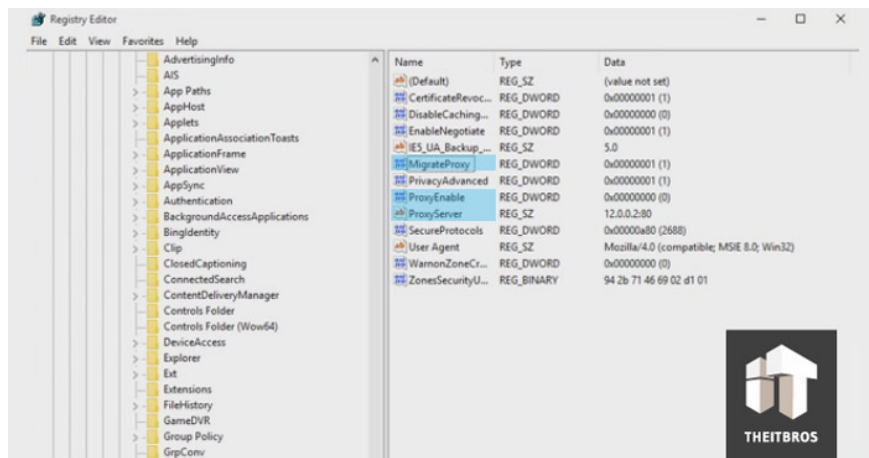
Open the **Connections** > **LAN Settings** tab . Make sure '**Use a Proxy Server for your LAN**' is not selected, if it is selected, uncheck it> check **Automatically detect settings** > **OK** > **Apply** > **OK** .



Open the Advanced tab of the Internet Properties window> click on the Reset button> check the Delete personal settings button and press the Reset button again.

Restart the computer and check if the error Cannot connect to the proxy server is over, if not, use the following methods.

## Method 3: Use the Windows Registry



Right-click the **Start** button and then select **Run** . On the Run command window, enter **regedit** there and click **OK** to open the Registry Editor.

At the interface for submitting the Registry editor you navigate to the key:

HKEY\_CURRENT\_USERSOFTWAREMicrosoftWindowsCurrentVersionInternetSettings

On the screen you will see all Registry values. Your task is to find and delete files:

1. Migrate Proxy
2. ProxyEnable
3. ProxyServer

#### 4. Proxy Override

Right click on the value and select Delete. After the files have been deleted, proceed to restart your computer.

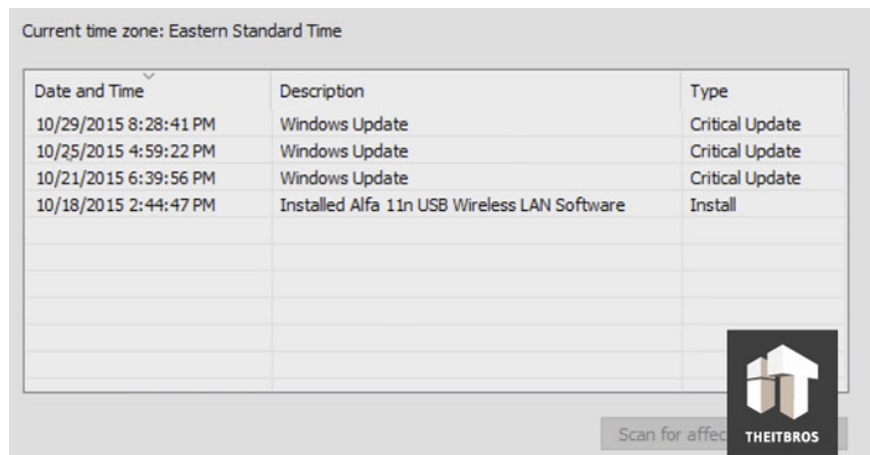
## Method 4: Use Command Prompt

You open Command Prompt with admin rights, when the window opens, enter the command:

```
ipconfig / release  
ipconfig / renew
```

After the commands are executed, close the cmd window, and try to see if the problem is resolved. Many users have reported that this simple solution fixed their errors. You can also try it.


## System Restore



Current time zone: Eastern Standard Time

Date and Time	Description	Type
10/29/2015 8:28:41 PM	Windows Update	Critical Update
10/25/2015 4:59:22 PM	Windows Update	Critical Update
10/21/2015 6:39:56 PM	Windows Update	Critical Update
10/18/2015 2:44:47 PM	Installed Alfa 11n USB Wireless LAN Software	Install

Scan for affected programs

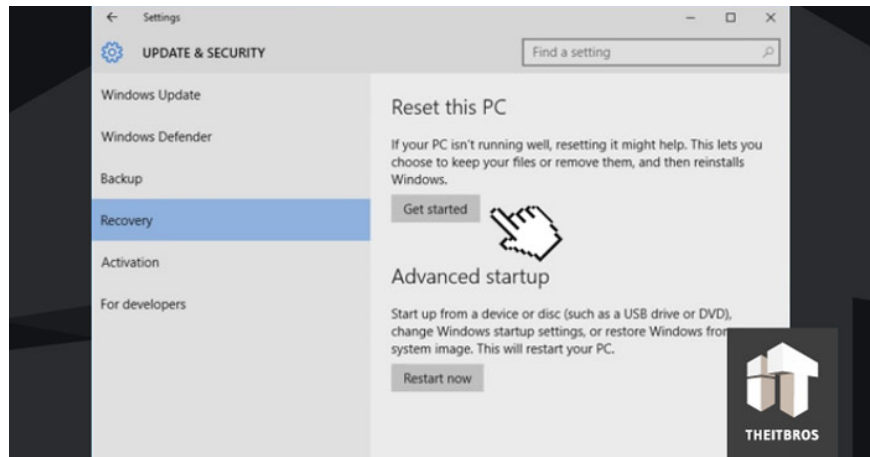


If the solution still doesn't fix the error, you can use the System Restore tool to fix the problem. System Restore allows you to restore your computer to its original update state.

Right-click the **Start** button, then click **Run** .

In the Run window, type **rstrui.exe** and then click OK. Now a new popup window appears, in this window you can select the date to restore to.

## Factory reset (full reset)



In any case if you can not fix the errors on Windows 10, you can execute the factory reset (or else the whole reset). The factory reset means that your computer will return to its original state as when it was purchased.

Just click on the **Start** button and select **Settings** . On the Settings interface, select **Update & Security** then select **Recovery** . Select Next **Get Started** to proceed Factory Reset.

After selecting Get Started, the screen will appear 2 options:

1. Keep my files
2. Remove everything

You should choose the first option because you do not need to delete all the files, but simply uninstalling the applications and settings is enough.

Refer to some of the following articles:

1. Cannot activate iPad after iOS 9.3 upgrade. This is how to fix it
1. Decode the errors encountered on Google Play and how to fix them
1. 6 ways to fix when laptop does not start

Good luck!

You finished reading the article "**Fix error Can't Connect to Proxy Server on Windows 10**" edited by the [TipsMake](#) team. We hope this article has provided you with many useful tech tips and tricks. You can search for similar articles on tips and guides. Thank you for reading and for following us regularly.