

# Fix error 0x00000709, 0x00000040, 0x0000011b when sharing printer in LAN simply with 2 steps

While connecting to a shared printer from a computer in the LAN, if you encounter error 0x00000709, 0x00000040, 0x0000011b when trying to connect to the shared printer.

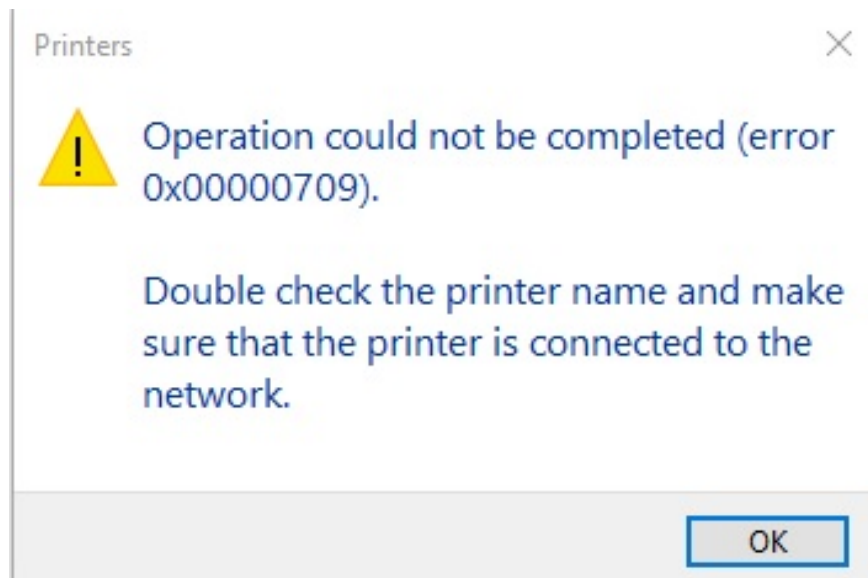
**While connecting to a shared printer from a computer in the LAN, if you encounter errors 0x00000709, 0x00000040, 0x0000011b when trying to connect to a shared printer.**

**This article will guide you to fix the above errors with just 2 simple steps.**

1. 8 New Shortcuts for Windows 11 You Should Know
2. Despite criticism, Apple still sold 6.5 million MacBooks in Q3 2021
3. PC shipments maintain growth in Q3 2021 despite COVID-19 pandemic impact

## Learn about the errors

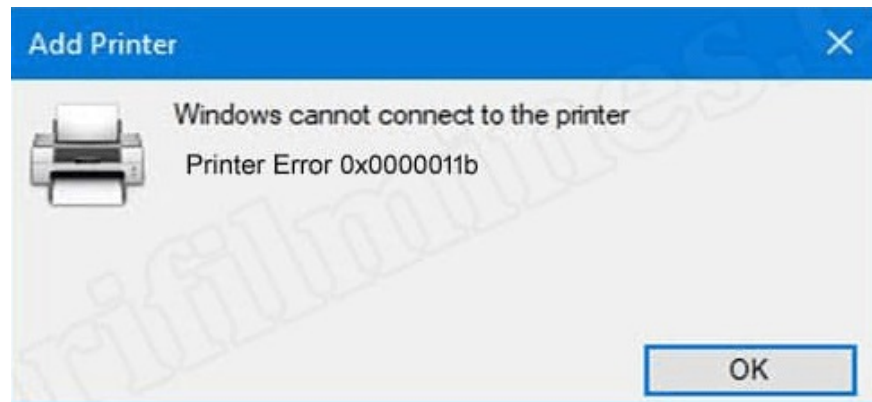
Error **0x00000709** occurs when you cannot set the default printer , the error message often appears on the screen **Operation could not be completed (error 0x00000709)** The machine can only recognize the old printer by default. When installing another printer, it cannot be set as default.



For error code **0x00000040** , this error has many problems but is usually due to a problem with the connection from the printer to the wifi lan, try one of the following ways to fix error **0x00000040 " The Specified Network Name Is No Longer Available Error "**



**0x0000011b:** The situation is that it is impossible to print to shared printers over LAN, deleting and reinstalling the printer does not work, or **Windows 7, Windows 10** clients cannot print to printers from Windows 10 servers with the message '**Windows cannot connect to printer**' .



## Fix the error in 2 simple steps

To fix this error 0x00000709 0x00000040 0x0000011b, you need a little basic knowledge about computers, we just need a few simple operations with the following 2 steps:

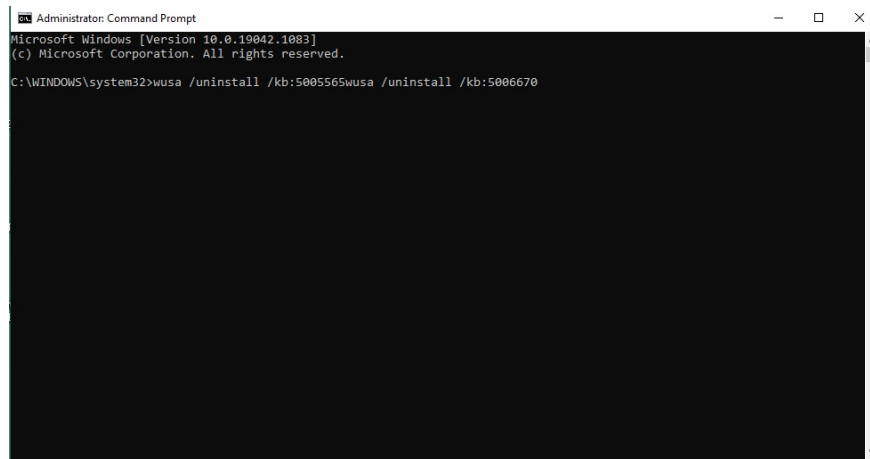
**Step 1 :** Uninstall update packages **KB5005565, KB5006670**

Run **CMD** with **Administrator rights** , type the following commands:

**wusa /uninstall /kb:5005565**

**wusa /uninstall /kb:5006670**

[caption id="attachment\_30342" align="aligncenter" width="980"]



```
Administrator: Command Prompt
Microsoft Windows [Version 10.0.19042.1083]
(c) Microsoft Corporation. All rights reserved.
C:\WINDOWS\system32>wusa /uninstall /kb:5005565wusa /uninstall /kb:5006670
```

Run CMD with Administrator rights, [caption]

**Step 2:** Run the REG file with the content below, **import it into the registry** and restart the computer

**Code:**

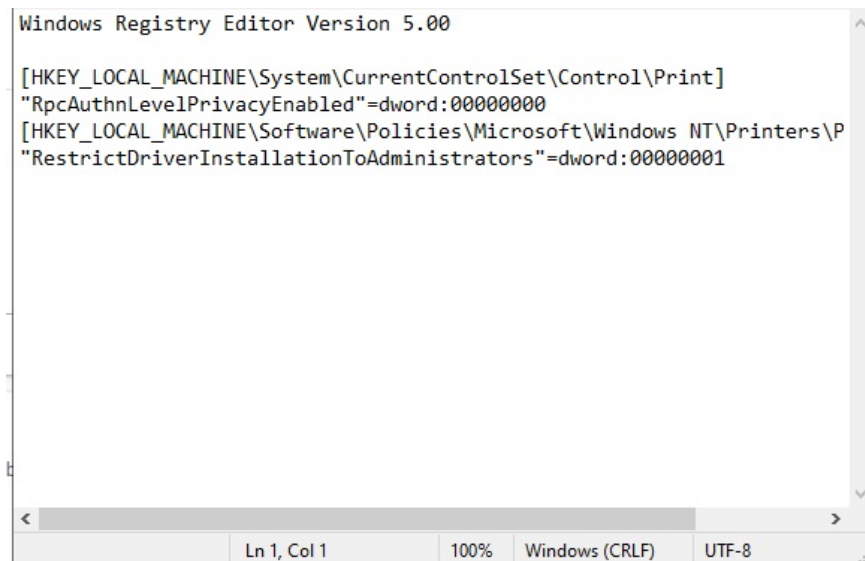
**Windows Registry Editor Version 5.00**

**[HKEY\_LOCAL\_MACHINE\System\CurrentControlSet\Control\Print]**

**"RpcAuthnLevelPrivacyEnabled"=dword:00000000**

**[HKEY\_LOCAL\_MACHINE\Software\Policies\Microsoft\Windows NT\Printers\PointAndPrint]**

**"RestrictDriverInstallationToAdministrators"=dword:00000001**



```
Windows Registry Editor Version 5.00

[HKEY_LOCAL_MACHINE\System\CurrentControlSet\Control\Print]
"RpcAuthnLevelPrivacyEnabled"=dword:00000000
[HKEY_LOCAL_MACHINE\Software\Policies\Microsoft\Windows NT\Printers\PointAndPrint]
"RestrictDriverInstallationToAdministrators"=dword:00000001
```

If you don't know how to create a **REG** file , you can download it here.

Source: Voz

You finished reading the article "**Fix error 0x00000709, 0x00000040, 0x0000011b when sharing printer in LAN simply with 2 steps**" edited by the [TipsMake](#) team. We hope this article has provided you with many useful tech tips and tricks. You can search for similar articles on tips and guides. Thank you for reading and for following us regularly.