

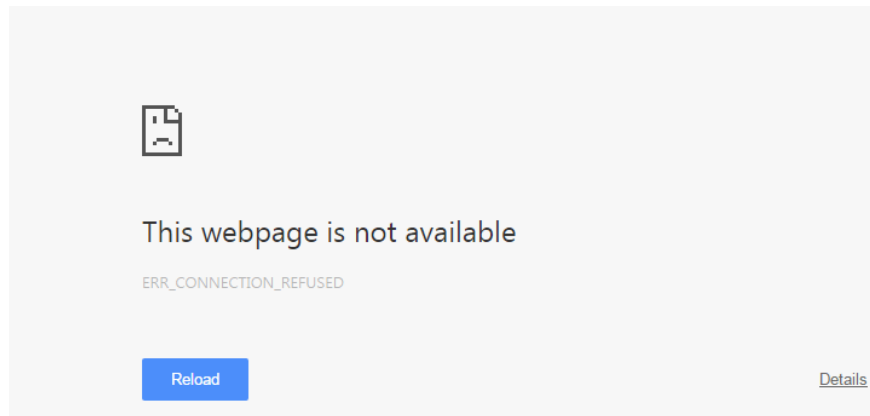
Fix Err-Connection-Refused and Err_Connection_Closed errors on Chrome browser

Sometimes in some cases when you are accessing some Web pages on the Google Chrome browser, you receive a message that some errors such as `err_connection_refused`, `Err_Connection_Closed` error and cannot access the page.

Sometimes in some cases when you are accessing some Web pages on the Google Chrome browser, you receive a message that some errors such as **`err_connection_refused`**, **`Err_Connection_Closed`** error and cannot access the page.

There are several reasons for this connection error, either due to DNS problems, proxy server problems, or browser time-out errors.

To fix this, you can apply a number of ways such as deleting the browser cache, checking the Proxy settings and disabling the firewall (Firewall).



Part 1: Fix Err_Connection_Closed bug on Chrome browser

1. Use Command Prompt

1. Open Command Prompt by right-clicking on the Desktop and pressing and holding **Shift** and clicking **Open command windows here** .

2. Enter the command below and press Enter:

```
netsh winsock reset
```

Open your Chrome browser and check if the error is still there? If the error still appears, enter each of the commands below and press Enter:

```
ipconfig / release
```

```
ipconfig / renew
```

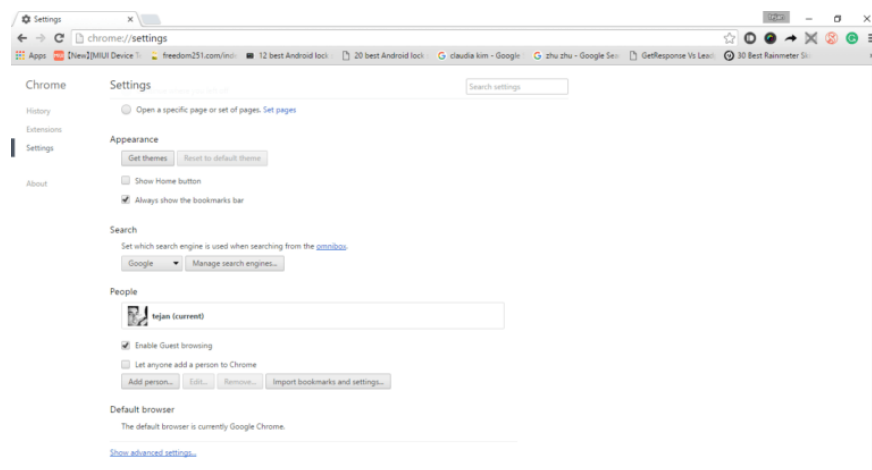
```
ipconfig / flushdns
```

```
ipconfig / registerdns
```

After the above commands are executed, restart your system. These commands are used to clear your system cache and connect to the ISP.

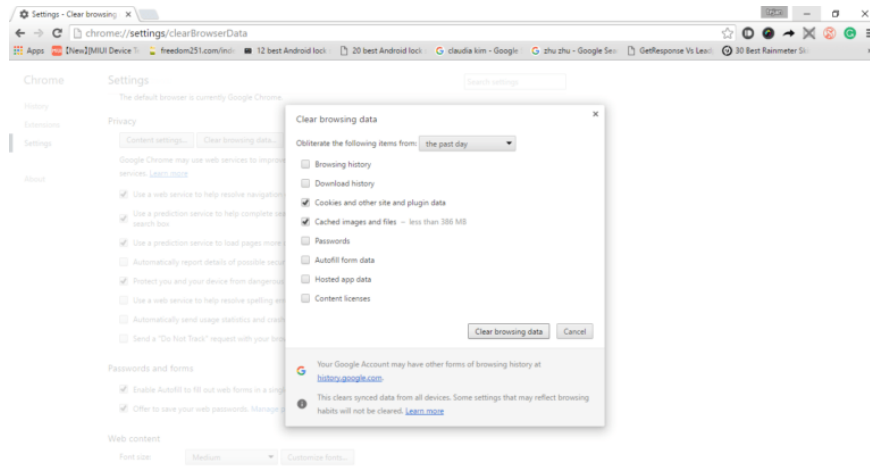
2. Clear the browser cache

1. On Chrome browser window, click the 3 dash line icon in the top right corner and select Settings.
2. Next on the Settings window, scroll down to find and select the **Advanced Settings** option.



3. On the Advanced settings window, click the **Clear browsing data option** . A popup window will appear on the screen.

4. At this popup window, click **Cookies and Plugin Data** and **Cached Images and Files**, then click Next **Clear Browsing Data** to continue the steps.

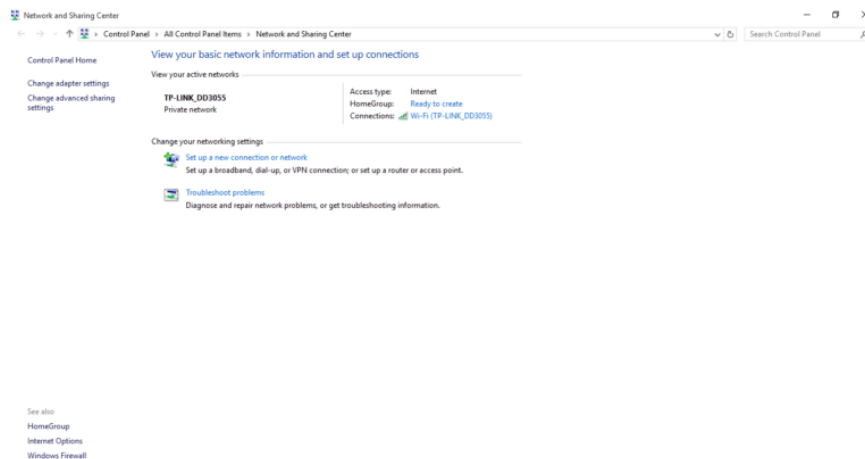


5. Finally check if the error on Chrome browser is still available.

3. Assign the IP address manually

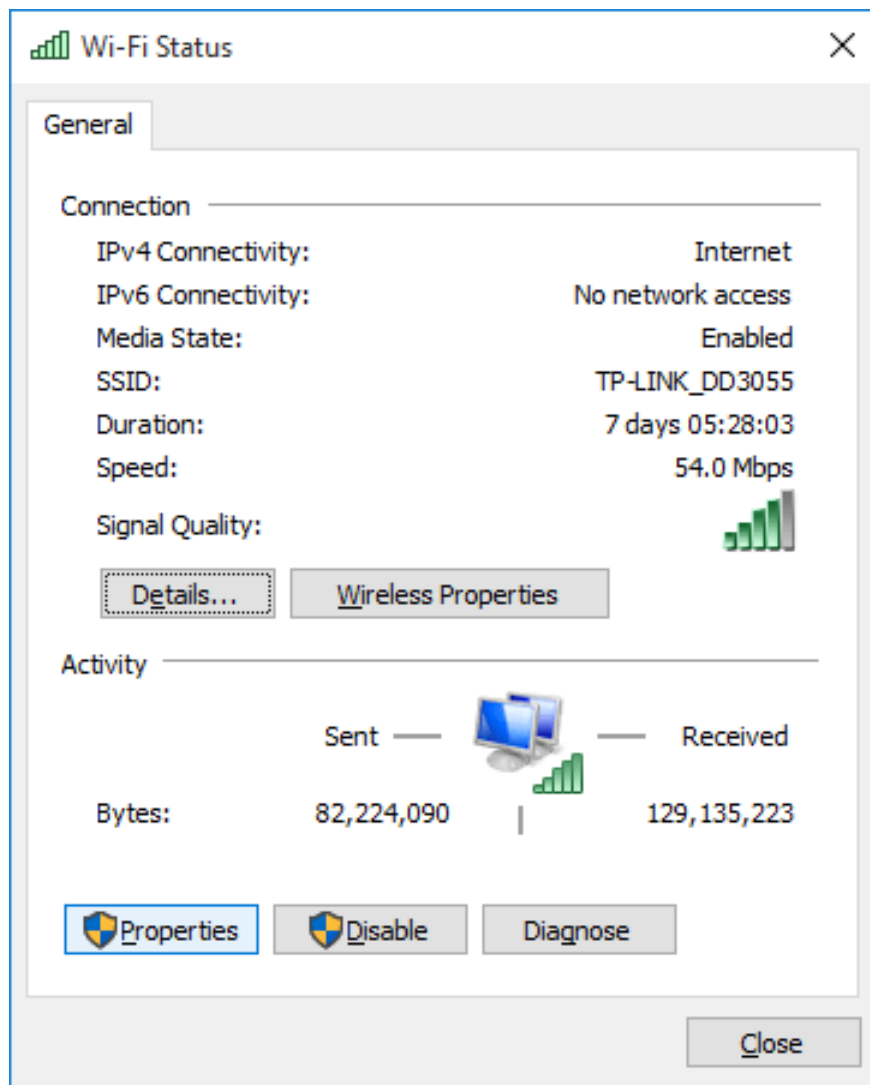
If you have applied the above solutions and still cannot fix the error, you can apply the final solution of assigning an IP address.

1. Right-click the network icon in the system tray, select **Open Network and Sharing Center**.

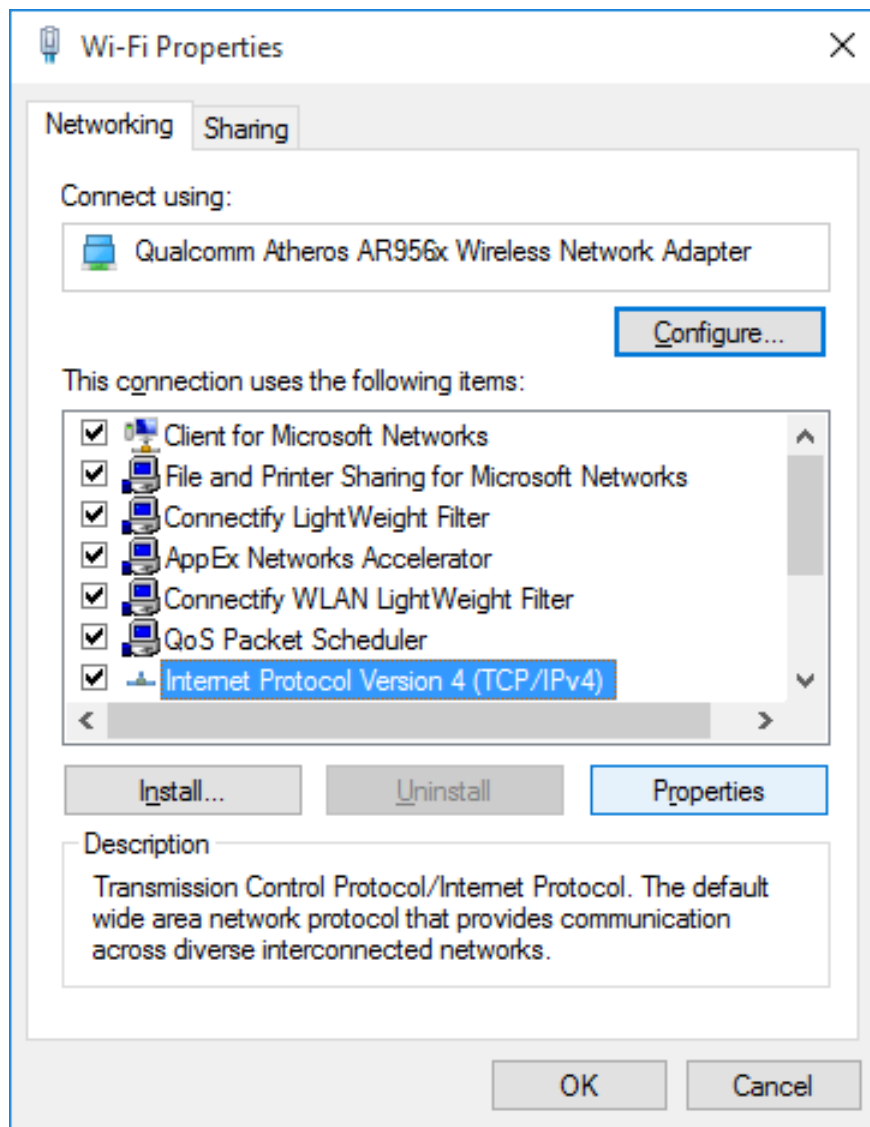


2. Next click on your network connection.

3. At this time, a popup window appears, where you click **Properties**.



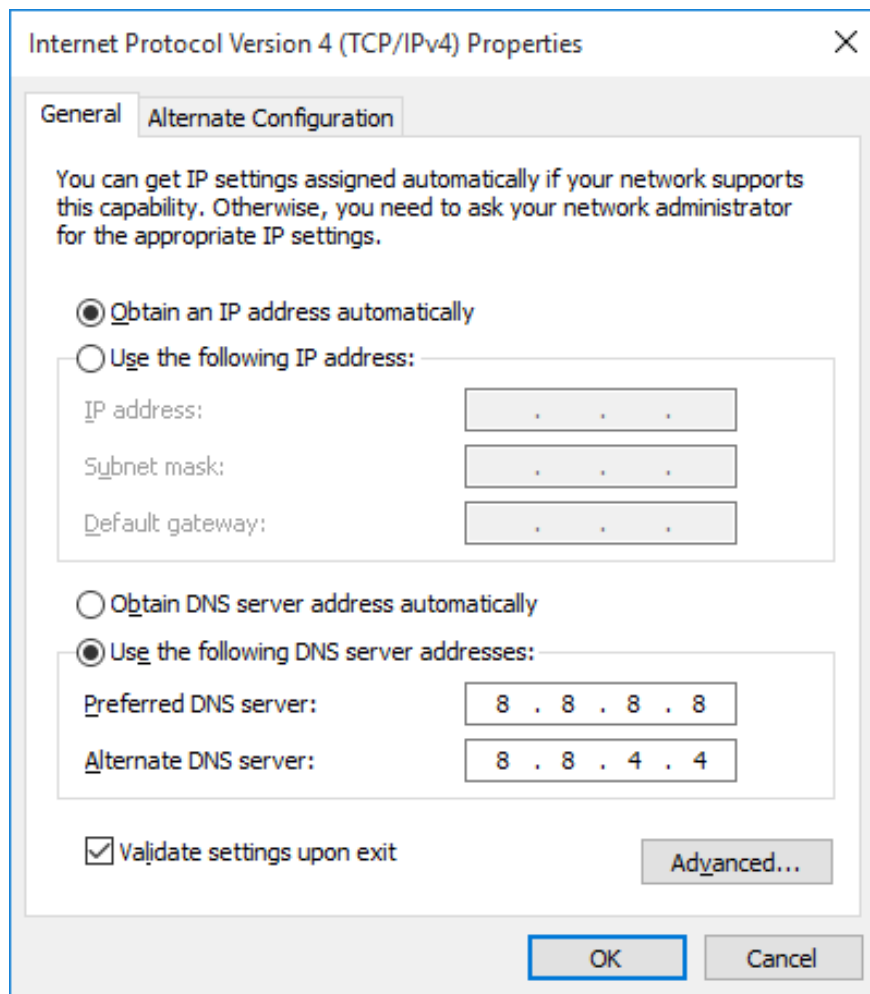
4. Next select **Internet Protocol Version 4 (TCP / IPv4)** then click **Properties** .



5. On the screen continue to appear a new popup window, here you select **Use the following DNS server addresses** , then enter the following values ??into:

1. Preferred DNS Server: 8.8.8.8
2. Alternate DNS Server: 8.8.4.4

Don't forget to check **Validate Settings Upon Exit** and click **OK**.



6. Finally open the Chrome browser and see if the error still appears?

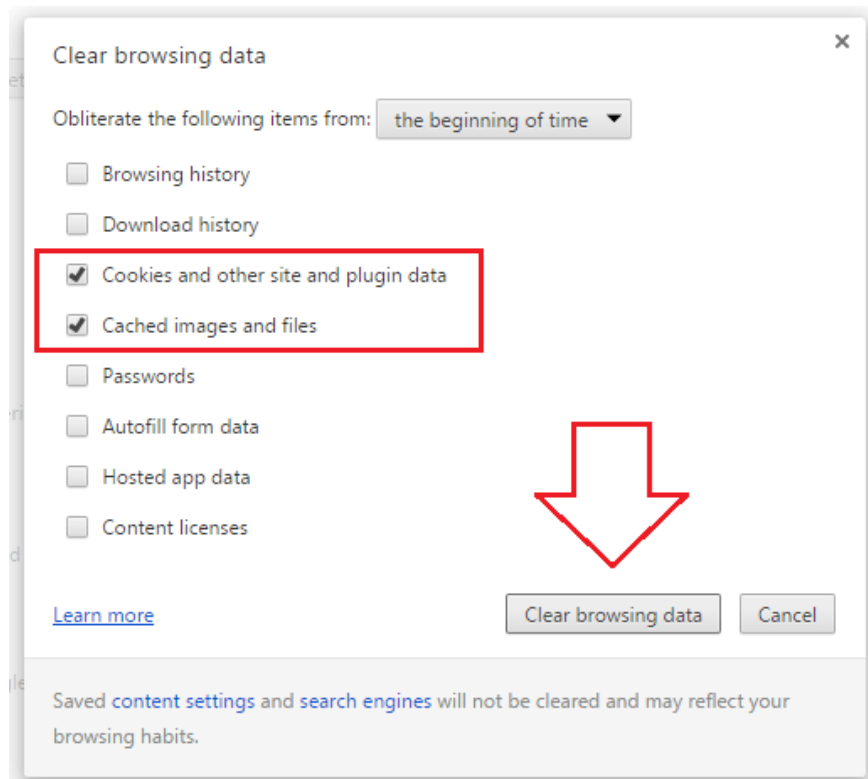
Part 2: Fix err_connection_refused error

1. Clear the Chrome browser cache

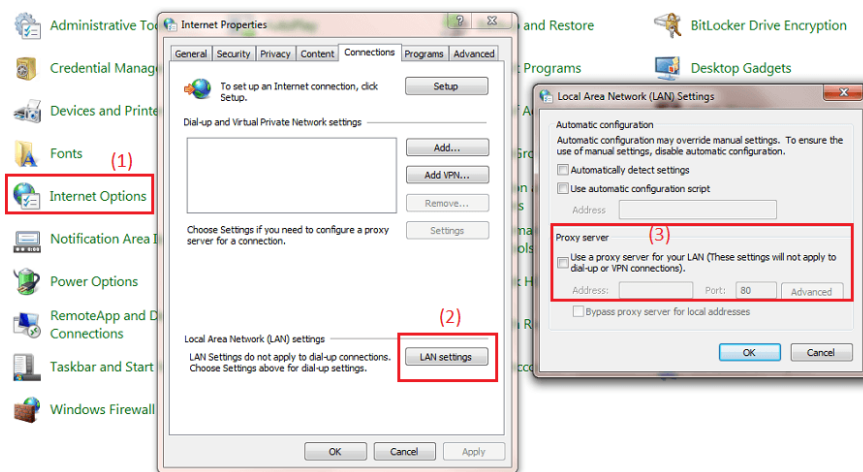
The cache on the expired Chrome browser may be a cause of blocking the Web site you want to access. To fix the connection refused error, you should proceed to delete all cache on Chrome browser.

To clear the cache on the Chrome browser, enter **chrome: // settings / clearBrowserData** in the Chrome browser address bar and press Enter.

The Clear browsing data interface appears on the screen. Here you select the two options **Cookies and other site and plugin data** and **Cached images and files** and then select the **Clear browsing data** button.



2. Check the server Proxy settings



To check the server Proxy settings, go to Control Panel, then click **Internet Option** .

On the Internet Properties dialog window, switch to the Connections tab and select **LAN settings** .

Next remove the option area under Proxy server.

3. Disable firewall or antivirus software

Sometimes firewalls or antivirus programs can block unsafe Web sites so that you cannot access them.

If you have applied the above two ways, you still cannot fix the Connection Refused error, in this case you can apply the way to disable the firewall or antivirus programs.

Go to **Control Panel** and select **Windows Firewall**, then click on the **Turn Windows Firewall on or off** link in the left pane to disable the firewall.



Customize settings for each type of network

You can modify the firewall settings for each type of network location that you use.

[What are network locations?](#)

Home or work (private) network location settings

- Turn on Windows Firewall
 - Block all incoming connections, including those in the list of allowed programs
 - Notify me when Windows Firewall blocks a new program

- Turn off Windows Firewall (not recommended)

Public network location settings

- Turn on Windows Firewall
 - Block all incoming connections, including those in the list of allowed programs
 - Notify me when Windows Firewall blocks a new program

- Turn off Windows Firewall (not recommended)

In addition, you can close or exit antivirus programs on your computer.

Refer to some of the following articles:

1. 5 Chrome extensions to help you surf the Web faster
2. How to remove Add-ons (Extensions) on Chrome, Firefox and some other browsers
3. Enable Web browsing mode without Internet connection on Chrome
4. 6 useful features on Chrome browser users should know

Good luck!

You finished reading the article "**Fix Err-Connection-Refused and Err_Connection_Closed errors on Chrome browser**" edited by the [TipsMake](#) team. We hope this article has provided you with many useful tech tips and tricks. You can search for similar articles on tips and guides. Thank you for reading and for following us regularly.
