

Fix computer error not starting

Forget the problems that cause Windows errors that focus solely on hardware on the system and what can happen to them. Here are a few easy situations for the machine and how to fix it.

TipsMake.com - We already know how to fix many errors arising on the computer such as unable to connect to the network, not running the program or some other arising related to the software. However, if the computer cannot boot, this is a much bigger problem.

Forget the problems that cause Windows errors that focus solely on hardware on the system and what can happen to them. Here are a few easy situations for the machine and how to fix it.

Note : This section relates primarily to desktop computers and the most common cause of a computer not being turned on. More specific troubleshooting steps for laptops are in the article: 6 ways to fix Windows laptop computers that cannot boot.

If you are not sure whether the computer is turned on, you can check this by locating any radiator fan inside the computer or fans that are visible from outside the computer. If these fans are rotating, then the computer is receiving power and this document cannot solve your problem.

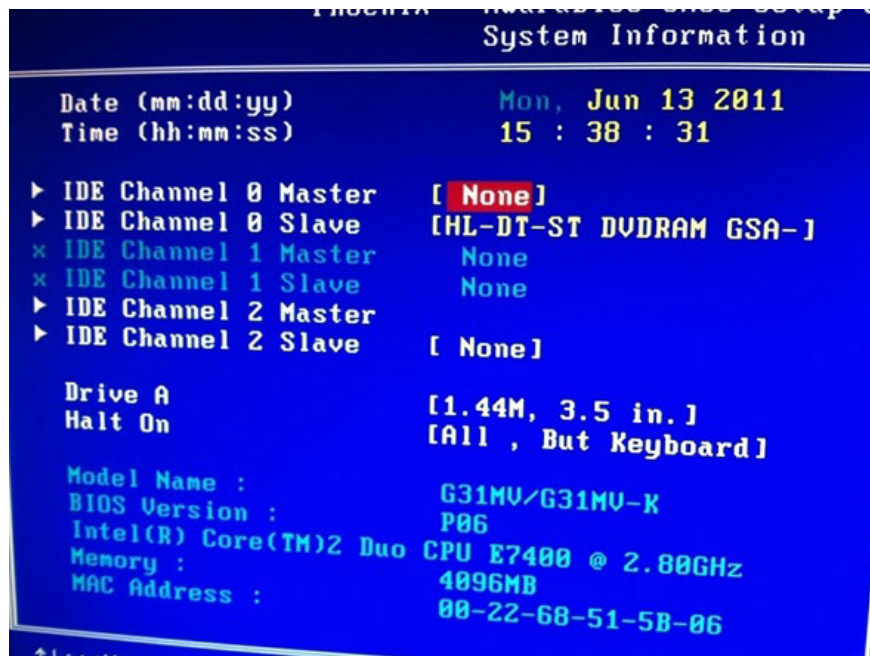


Fix computer error not starting

1. BIOS Settings

2. Cord
3. Damaged components
4. Problems with power strip or socket
5. Error due to third party hardware
6. Poor power cable
7. Power button is not turned on
8. Power source is incorrect
9. Poor battery
10. Hardware is loosely connected
11. Poor power supply, buttons, power supply or inverter

BIOS Settings



Although rare, sometimes the settings in the BIOS are incorrect, either because the program is overclocked by the user . This can easily lead to motherboards using mounting components that do not function correctly to generate errors. . The components themselves are good but the BIOS needs to know how to work with them.

Using the default setting of default settings in the BIOS will help. Reset the BIOS to the default by pressing the CMOS key while turning off the computer. The position of the CMOS key varies depending on the motherboard and model, so you need to see the motherboard / computer manual to find out where it is.

Cord



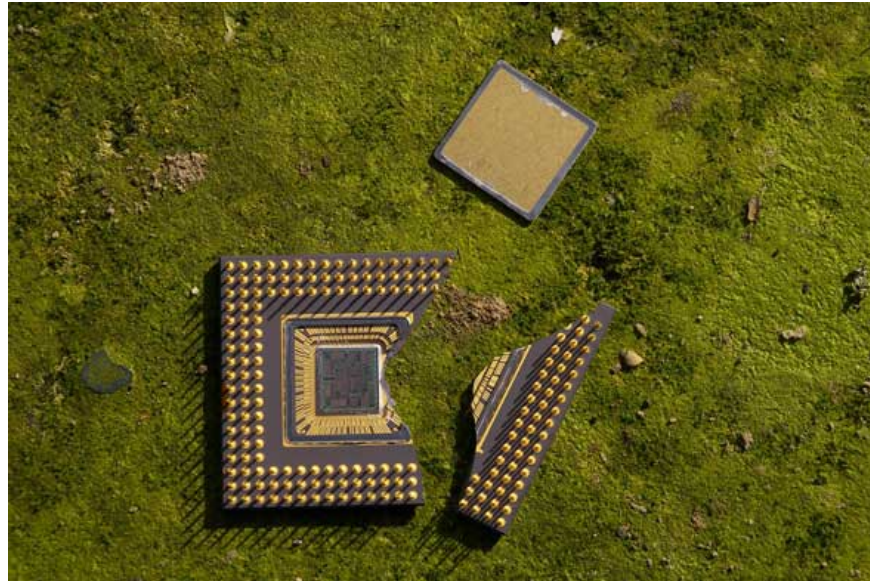
If you assemble your computer yourself or are using an old computer, the cable may not be fully connected (or not plugged in properly) or the cable is loose over time. If you assemble the machine yourself, make sure you plug the entire cable into the required position for each component, including the power cord, data cable, etc. Also make sure that all additional cards are plugged in. into the motherboard.

If you have bought a computer, you should remove the case to check if the cables are plugged into place. If there are any mistakes, it is not difficult to reconnect the cable because each cable is unique and can be distinguished by color and shape.

The power cord is not properly connected, which causes the computer to not turn on.

Verify that the power cord is properly connected to the wall outlet and to the back of the computer. If everything looks fine, unplug the power cord and re-plug both ends of the cord to make sure the cable is not loose.

Damaged components



If the cable is plugged into place, the next generation may be caused by the device not working or in other words dead. In this case, there is no other way to buy new parts instead.

Checking out the steps above will help you restore the system and help your computer to start normally. In case of need to replace components, users should get help from computer technical staff if the machine still has warranty.

Problems with power strip or socket

If you plug the computer into a power strip (UPS with multiple sockets) or UPS, the device can turn everything on / off at the same time, disconnect the power from it and directly connect the device. charged with wall outlet.

If it is still not useful to connect the computer directly to the wall outlet, make sure that the socket is still working normally by connecting an electrical device other than the same socket.

Error due to third party hardware

If you have added any recent hardware to your computer, you should temporarily disconnect or remove that hardware to ensure that it is not the cause of your problem.

Note: If the computer works well before you add new hardware and the computer does not beep but is turned on, refer to the article: Instructions for troubleshooting the computer.

Poor power cable

Power cord connections



**Computer or
other device**

Wall Socket

Check if the power supply cable for your computer is damaged by using another power cable.

Tip: Most monitors use the same power cable and can swap these computer power cables for each other.

Power button is not turned on

Antec True 330 330 W Power Supply (PSU)



Some computer power sources may have their own power button, as shown in the illustration. Check the back of the computer and make sure no additional buttons are turned off and prevent power from reaching the computer.

Power source is incorrect

If you are installing a computer, or it has never been turned on before, there may be a faulty power supply, making the power supply to the computer insufficient. Please check if your power supply meets the requirements of the motherboard, processor and video card.

Poor battery

If your computer is a laptop or laptop that uses batteries to move, that could be the cause of your problem.

If your computer powers on when the laptop is plugged in, and disconnects when you unplug the charger, you should buy a new one instead.

If your computer does not turn on, even if it is plugged in, try removing the battery (if possible) and see if the computer can turn on only if the power cable is connected. If the computer still cannot turn on the power, go to the last section.

Hardware is loosely connected

As mentioned earlier, every time your computer is turned on, it will run POST (Power On Self Test) and if any hardware in your computer does not perform this part, the computer will not be able to turn on. . If the computer

cannot check a component because it is loose or the cable connected to the device is plugged in, then running POST will fail.

Note : When checking inside your computer make sure you know about ESD (electrostatic discharge) and how to protect your computer from ESD.

Unplug all cables from the back of the computer and open the computer, then remove all cards and memory cards in the computer. After all the cards have been removed, make sure all cables are securely connected by unplugging and then re-plugging all the cables for the drive and cable for the radiator fan.

After completing the above operations, connect the power cable to the back of the computer and try turning on the computer. If the computer is turned on, you can turn off the computer and reconnect all the remaining components.

Poor power supply, buttons, power supply or inverter

If, after following the above sections, your computer still cannot turn on, it is likely that a component of your computer's hardware has experienced problems. Maybe the power supply is broken. If you have a laptop or do not want to replace this power supply yourself, you should bring your computer to a repair center.

If you have a desktop computer and plan to fix your computer yourself, open your computer and check the power connections. You can verify the connection by unplugging the main power cable and then plugging it back in to make sure it is not loose. Also, check the power button cable and make sure it is correctly connected to the motherboard.

If the power supply connections are still fine, but the computer still cannot turn on, then a component in your computer has a problem. You should replace the hardware in the following order:

1. Power supply
2. Graphic card
3. Motherboard
4. Processor and heat sink

Good luck!

See more:

1. The simple way to fix computer errors is suddenly turned off
2. How to fix computer errors without completely turning off the power
3. Instructions to fix Windows error does not boot

You finished reading the article "**Fix computer error not starting**" edited by the [TipsMake](#) team. We hope this article has provided you with many useful tech tips and tricks. You can search for similar articles on tips and guides. Thank you for reading and for following us regularly.