

Fix Bluetooth not working or connecting error

Bluetooth is an indispensable technology feature today, helping users connect wireless devices quickly. However, sometimes you will also encounter some problems with Bluetooth that cause work interruption. In this article, TipsMake will introduce methods to fix Bluetooth not working or not connecting errors for you to refer to and apply.

Bluetooth is very convenient but does not always work well even when you have Bluetooth enabled on your laptop. In case you have turned on Bluetooth on your Laptop but still cannot use Bluetooth and you do not know the cause, immediately refer to the following article to help you fix the error of Bluetooth not working on your laptop. Windows 7 and applicable to Windows 10, please read our detailed instructions below and follow them.

Instructions to Fix Bluetooth error not working on Windows 7

Article content:

Method 1: Try re-pairing the device

Method 2: Allow Bluetooth devices to find your PC

Method 3: Use Windows Hardware Troubleshooter

Method 4: Check the Bluetooth Driver

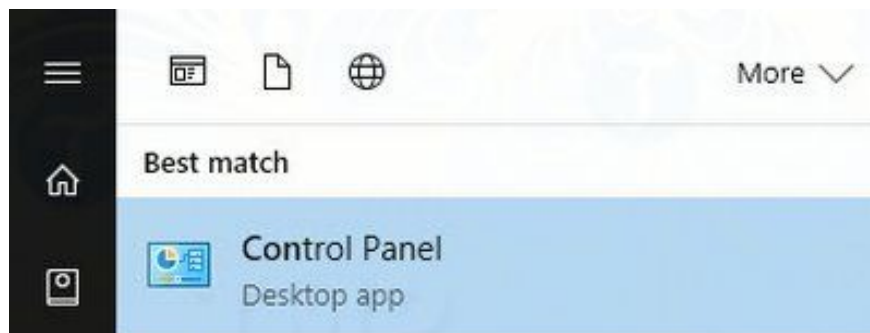
Method 5: Check the Services bluetooth

Method 6: Some other solutions

Method 1: Try pairing the device again

If you have turned on Bluetooth, but cannot connect to the target devices, you can try to pair the device again and check if the Bluetooth not working, not connecting, not turning on error on your Windows computer persists or not. .

First open **Control Panel** by entering control panel into the Search box on the Start Menu, then on the search results list, click to open.



On the Control Panel window, find and click **Devices and Printers** .

The screen will now display a list of all connected devices. What you need to do is find the target Bluetooth device, right-click on it and select **Remove Device** .

The next step is to re-pair the device by clicking **Add Device** in the top corner. Follow the on-screen instructions to pair the device and check if the error persists.

Method 2: Allow Bluetooth devices to find your PC

Sometimes the Bluetooth feature works fine on a computer or laptop, but cannot be found when scanning on the other device. So you can try allowing Bluetooth devices to scan to find your PC and fix the error of Bluetooth not working, not connecting, not turning on on Windows computers or not.

To do this, first find and right-click your computer on the **Devices and Printers** window , select **Bluetooth Settings** .

On the Bluetooth Settings window, check **Allow Bluetooth devices to find this PC** , then click **OK** to save the changes.

Method 3: Use Windows Hardware Troubleshooter

If all of the above methods fail, the last way is to try the Windows Hardware Troubleshooter built into the operating system to fix the error.

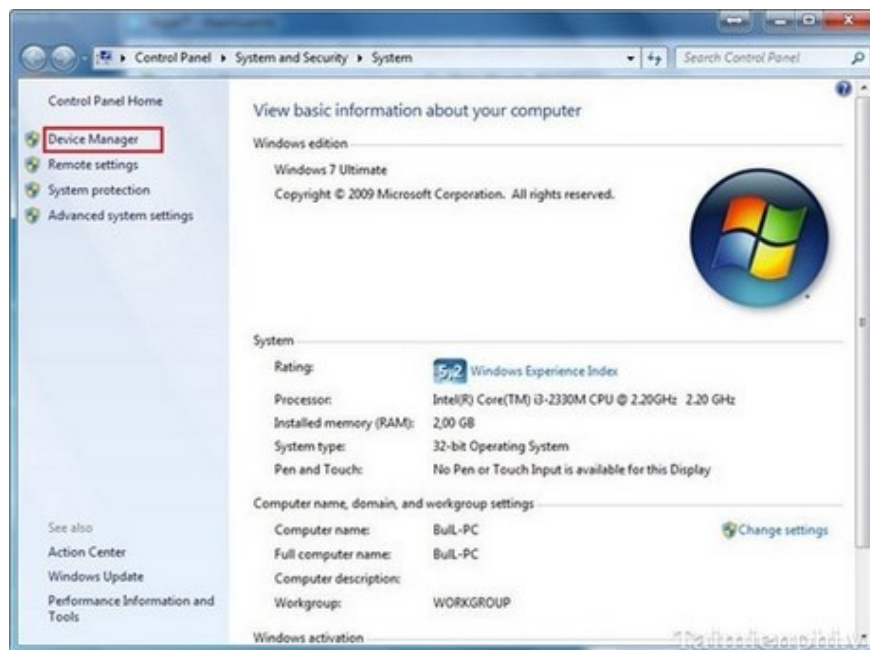
First enter **Troubleshooter** into the Search box on the Start Menu to open it.

Next on the Troubleshooting window, find and click **the Hardware and Sound** link .

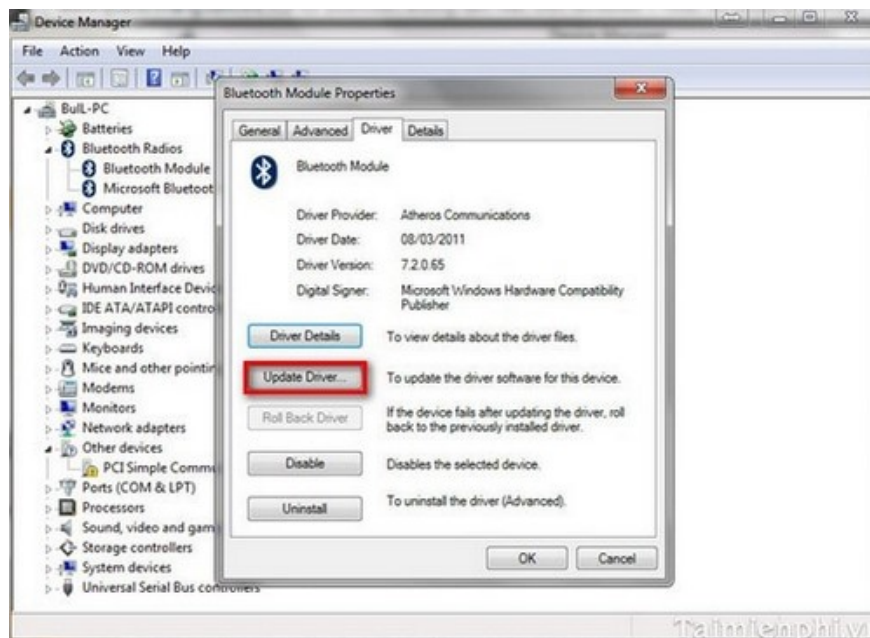
The above action will list a series of options. Here you find and select **the Hardware and Devices** option , then follow the on-screen instructions to fix the error.

Method 4 : You need to check **the Bluetooth Driver** , by:

- Right-click **Computer** , select **Properties** , then select **Device Manager**



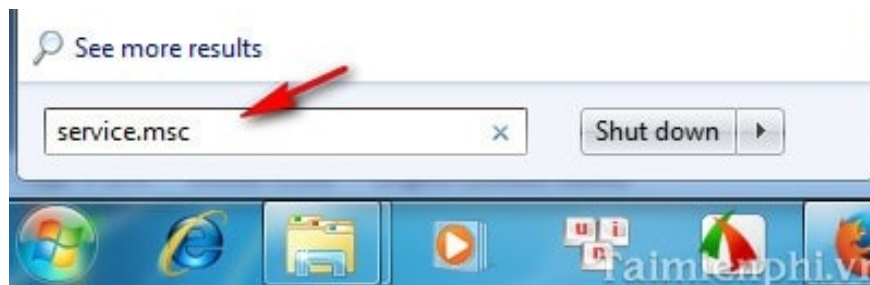
In the window that appears, find Bluetooth, right-click and select **Properties** . You need to check if the Driver is **Disabled** (disabled), if so, you need to **Enable** it.



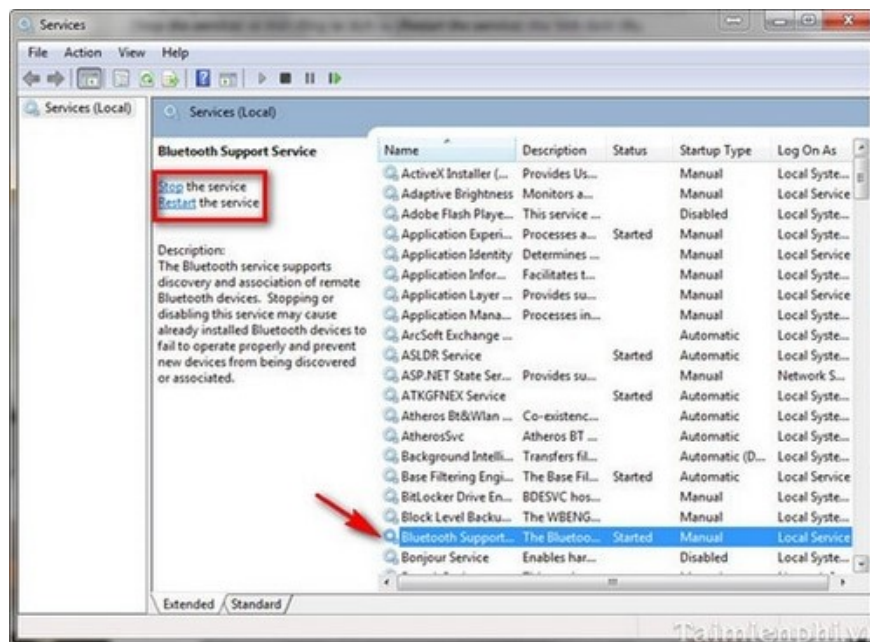
In addition, it may be because the version of your Driver is too old, you can choose **Update driver** to have Windows automatically download and install the latest version.

Method 5 : Check if the **bluetooth services** running on the computer are disabled by:

- Select **Start/Run** and enter **service.msc**



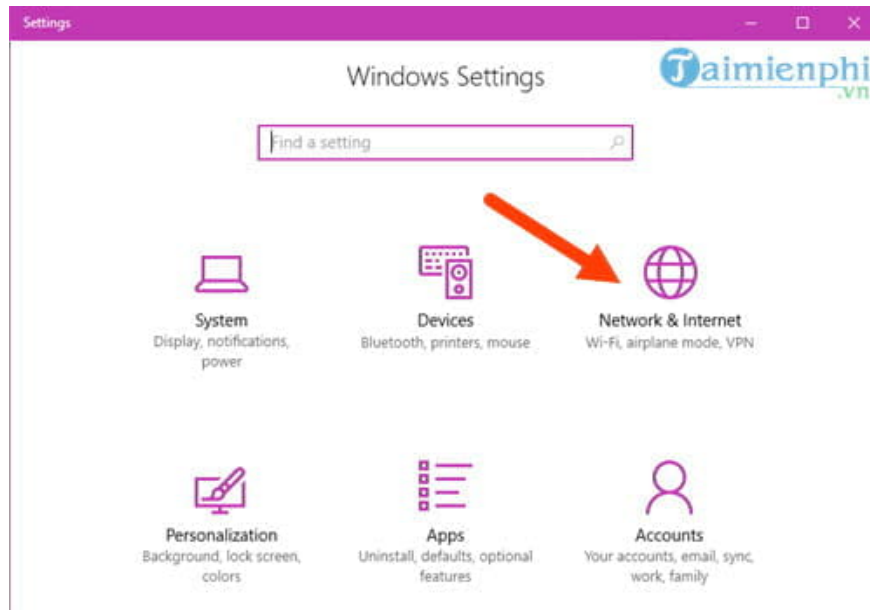
In the window that appears, navigate to **Bluetooth Support Service** and select **Restart the Service** . If this item is turned off, select **Start the Service** to start it up.



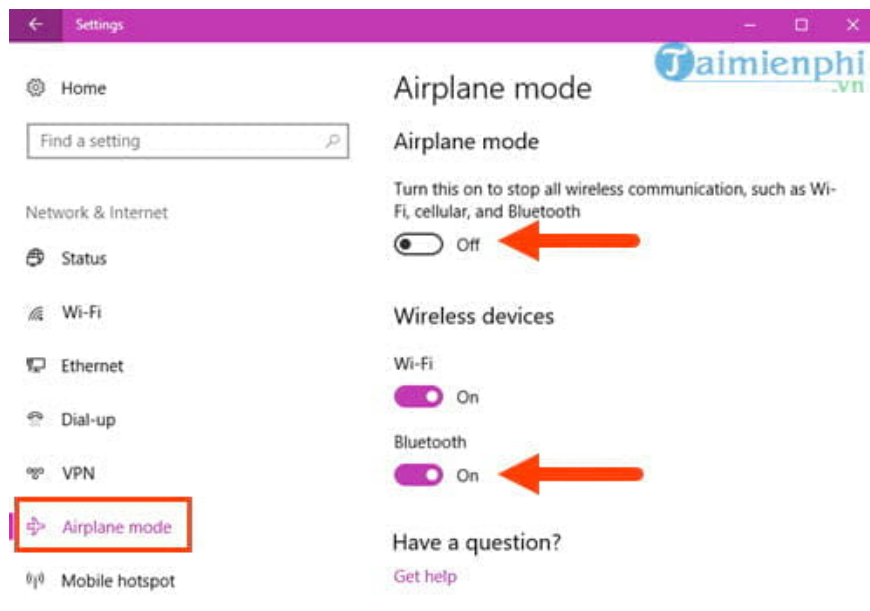
In addition to the above two ways, you can also install a Bluetooth controller (Bluetooth adapter) for your computer to support Bluetooth control. If you still encounter errors during use, you need to download the **Fix308817** fix provided by Windows to install and fix the error.

Method 6: Bluetooth not available error sometimes also occurs in this case, so try applying this method to see how it works. This error occurs on both Windows 10 and Windows 7.

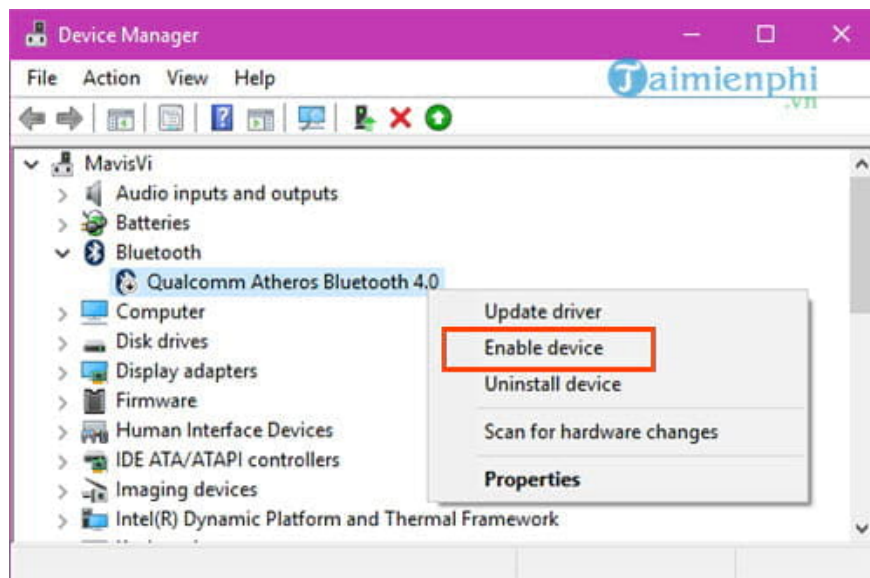
First press the **Windows + I** key combination to open Windows Settings and then access the **Network & Internet** section , make sure you have turned off airplane mode. As for machines running Windows 7, you can check by opening the Start Menu and typing "Bluetooth" to open it.



Then you just need to check whether **Airplane mode** is turned off and **Bluetooth** is turned on or not.



Or you can go to the Device Manager mentioned above and turn on Bluetooth, most likely you have not **Enable device** yet .



So, with the methods TipsMake mentioned above, we hope to help you fix the error of Bluetooth not working on your laptop, helping Bluetooth to work normally again. During the process of performing the procedure, if any errors occur or cannot be performed, please leave a message here and TipsMake will answer your questions as soon as possible.

And if you are having problems on Windows 10 when encountering the Bluetooth not working error on Windows 10, don't worry too much because this is a basic error. TipsMake has provided instructions on how to **fix the Bluetooth not working error on Windows 10** . Let's see how to fix the error.

In addition, for some users, due to problems with the Windows version, especially Windows 10, they cannot use Bluetooth. And if you are one of them, this article on how to connect and disconnect bluetooth on Windows 10 will help you do this step quickly.

You finished reading the article "**Fix Bluetooth not working or connecting error**" edited by the [TipsMake](#) team. We hope this article has provided you with many useful tech tips and tricks. You can search for similar articles on tips and guides. Thank you for reading and for following us regularly.