

Fix Full Disk error 100%, 99% on Windows

When having a 100% or 99% full disk error, the computer often runs very slowly, sometimes frozen, at this time we can hardly do work or play games, listen to music.

Error 100% disk on Windows 10, 8.1, 7 is often caused by many different reasons such as Virus or Old Windows version . When making this error, it will affect your working process, making it difficult bear for computer users. Open Task Manager and you will see a 100% Disk error on the Process tab. Join us to find out the causes and how to thoroughly fix them.

1. The cause of full 100% Disk Usage error on Windows 10 / 8.1 / 7

Usually the 100% Disk error usually occurs on computers with more 'traditional' hard drives. The reason for this is quite simple, hard drives are "too old" to handle the processes on normal drives. However, in many cases the error can also occur even on the latest SSD hard drive.

There are many causes of 100% Disk error, of which some of the main reasons are due to:

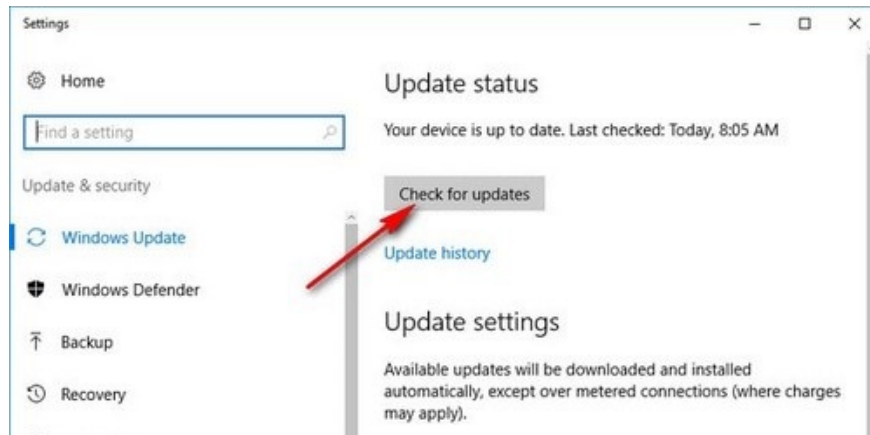
1. The most common cause is when you update the version of the operating system
2. Antivirus programs and software installed on your computer.
3. Faulty system files.
4. Operational functions affect the system
5. Too many services run in the background.
6. Certain programs enable many features.
7. Viruses or malware attack and cause errors.
8. Due to some software, when opened, it will cause a full disk error 100%.
9. Do not fully update the latest driver

2. How to Fix Full Disk Error.

Method 1. Update to the latest version of Windows

Windows publisher Microsoft regularly updates patches for their baby to help Windows work better. If you have just reinstalled Win and encountered a full disk error, try updating Windows to install the patches.

As recently, Microsoft has just released the Windows 10 Creators Update version which completely fixes the 100% disk error, the full disk error, you can update it to no longer have this error.



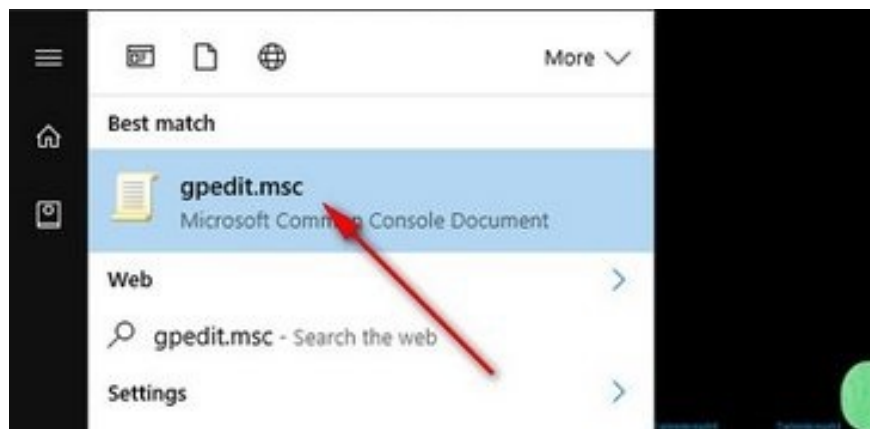
Method 2: Scan the entire system for viruses

The first step you should do is to use anti-virus software to scan the entire system, then check Disk Usage again. If everything is fine, you don't need to take the next steps. But if the 100% full disk error persists, then you can do it by the other ways below

Method 3: Turn off Windows Defender

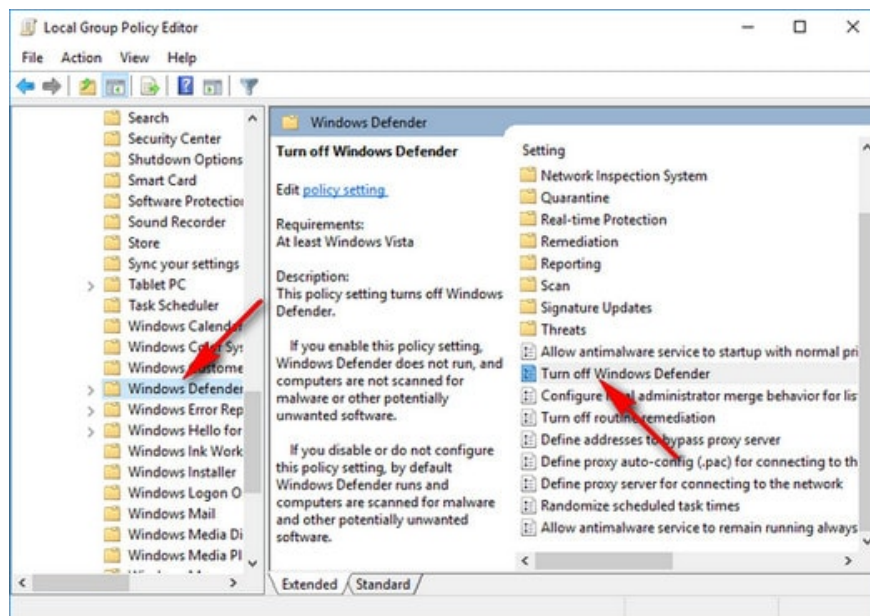
Windows Defender is a useful security and virus prevention program built in Windows 8 and above versions. However, this feature also causes problems for users when this is one of the main causes of the full disk error.

To turn off Windows Defender, go to Start Menu and look for the keyword gpedit or go to Run (Windows + R) type gpedit.msc to open Group Policy

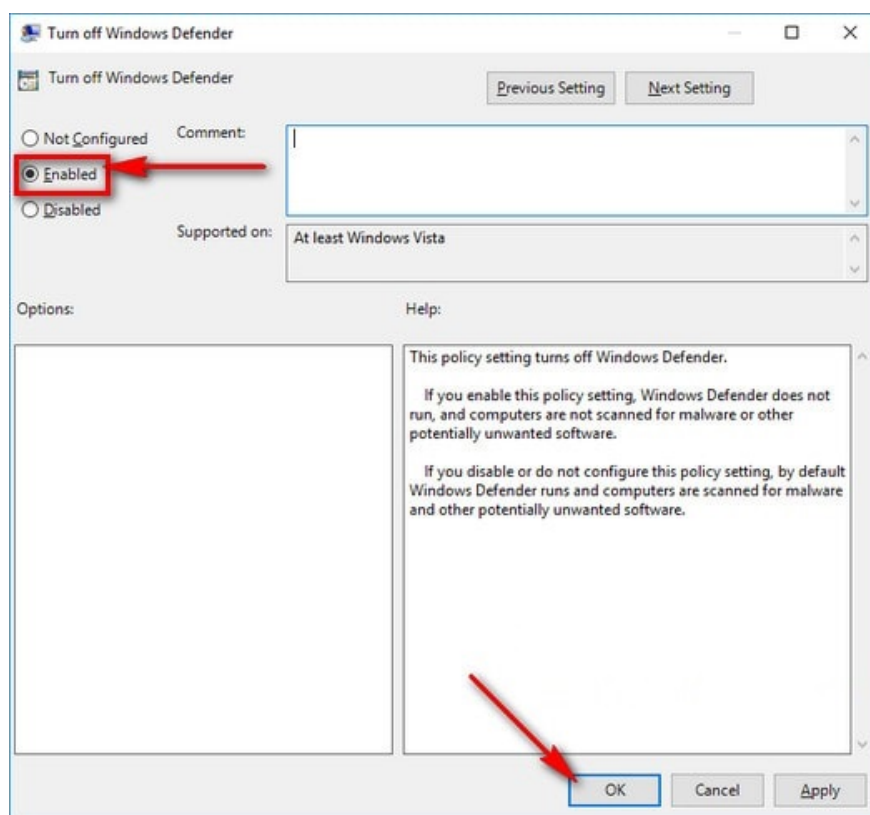


On the Local Group Policy Editor window, locate the Turn off Windows Defender file contained in the Windows Defender folder under the path

Computer Configuration / Administrative Templates / Windows Components / Windows Defender



Double-click the Turn off Windows Defender file, then choose Enable to disable Windows Defender then click OK. Then you can reset the machine to check if the full disk error, 100% disk still appears or not.



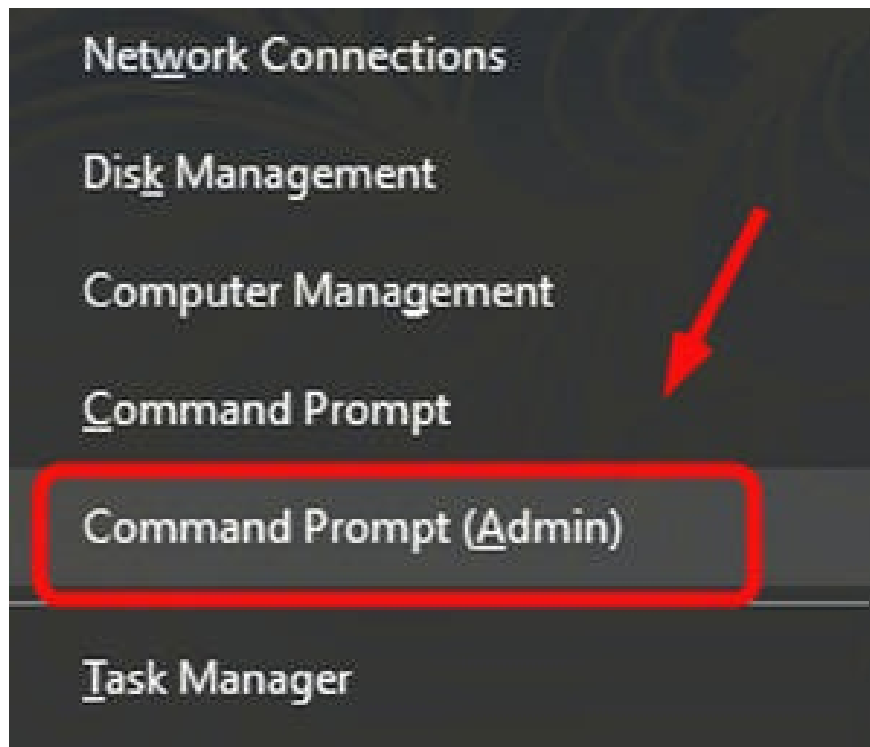
Method 4: Disable Windows Search

To confirm whether Windows Search is the cause of the Full Disk 100% error, the first thing you need to do is temporarily disable Windows Search and see if your computer still has a 100% Full Disk error. no and whether the speed has been improved. If the 100% Full Disk error is gone, you can disable Windows Search completely.

Windows Search is a tool that makes finding files on your computer much faster. If you do not use Windows Search or at least, or you use another search application to search, then you can disable Windows Search completely. Disabling this service will stop indexing all files, but you still have search access and only takes longer.

Here's how to temporarily disable Windows Search and check if that's the cause of the Full Disk 100% error. Note that Windows Search will re-start when you restart your computer.

Step 1: Press the Windows + X key combination to open the Power User Menu, where you select Command Prompt (Admin).



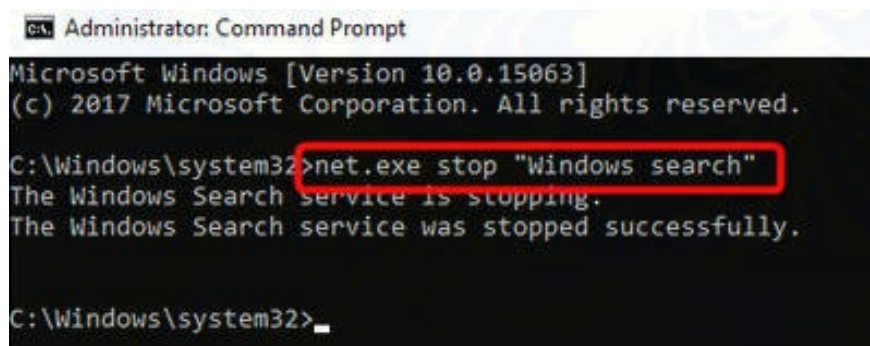
Step 2: If the User Account Control window appears on the screen, click Yes to continue.



Step 3: At this point, the Command Prompt window will appear on the screen, your task is to run the following command:

```
net.exe stop "Windows search"
```

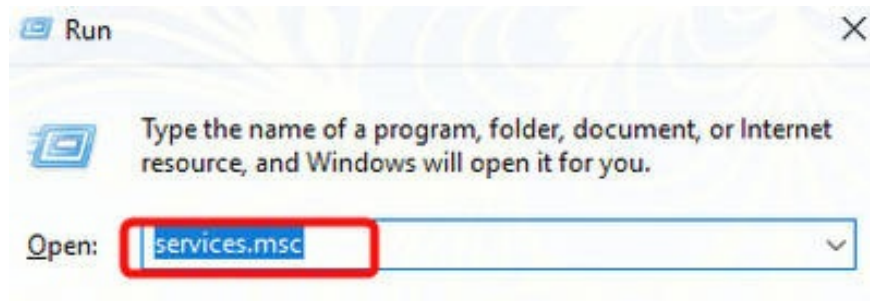
Step 4: Press Enter to temporarily disable Windows Search.



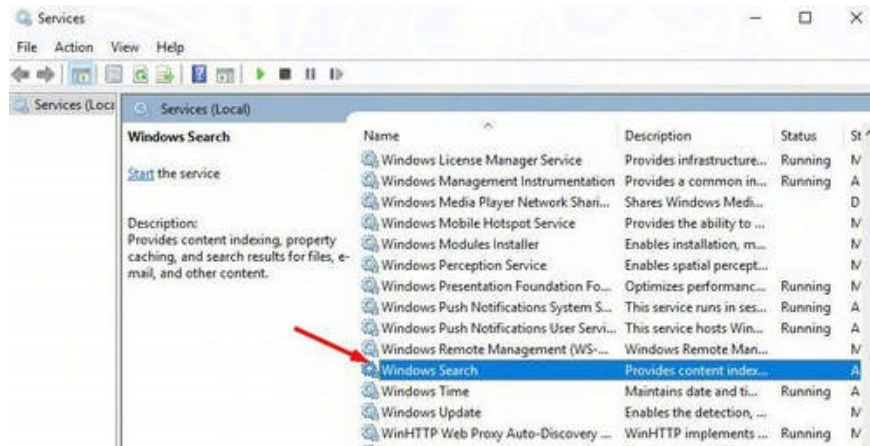
Finally, check if the Full Disk error 100% still exists or not. If the error no longer proves the cause of the error is Windows Search, then you can disable Windows Search completely.

If you have found the culprit that caused the Full Disk error 100% is Windows Search, do not hesitate to completely disable Windows Search to fix the 'root' error.

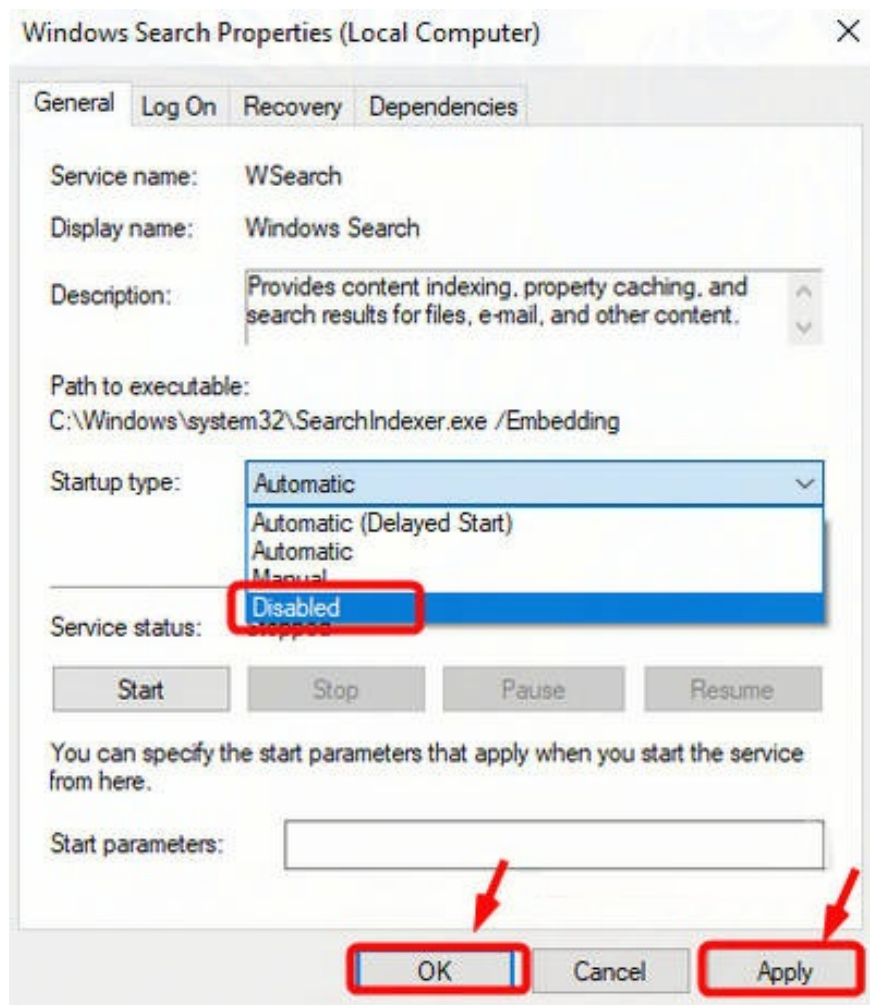
Step 1: Press the Windows + R key combination to open the Run command window, then type services.msc into it and press Enter to open the Services window.



Step 2: On the Services window, find and double-click the Windows Search option to open the Windows Search Properties window.



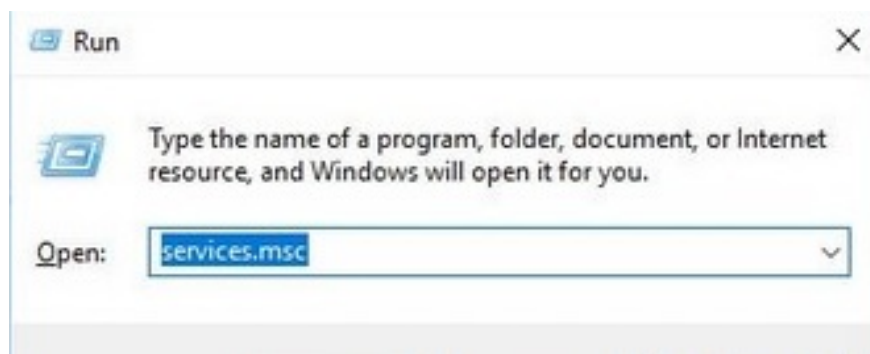
Step 3: In the Windows Search Properties window, set the Startup type to Disabled. Then click Apply and then click OK to save changes.



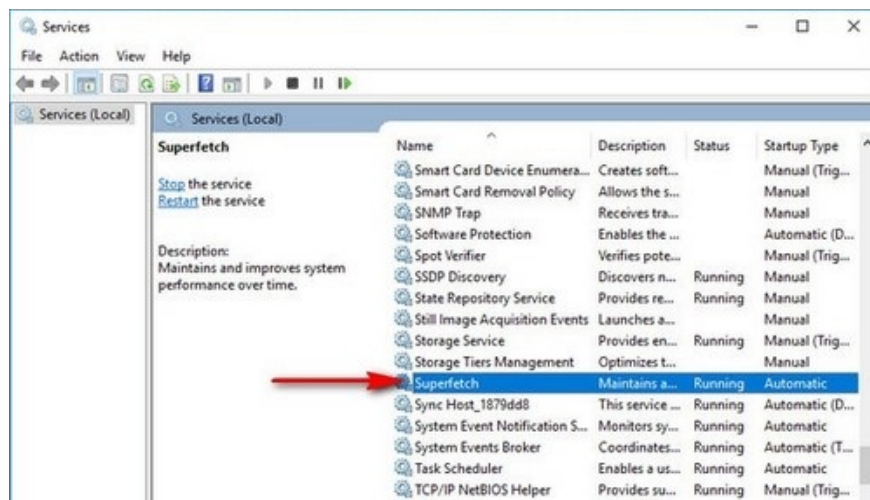
Method 5: Turn off Superfetch service

Superfetch service will help your computer boot faster when combining HDD with RAM, but you should turn off this service when your computer has a weak configuration.

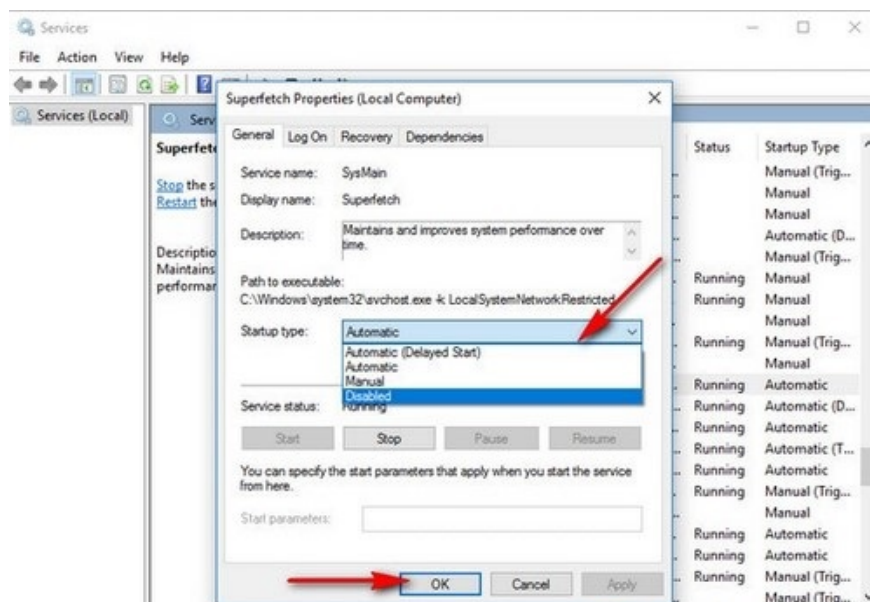
Open the Run window by pressing Windows + R and type services.msc



On the Services window, navigate to Superfetch and double-click on it.



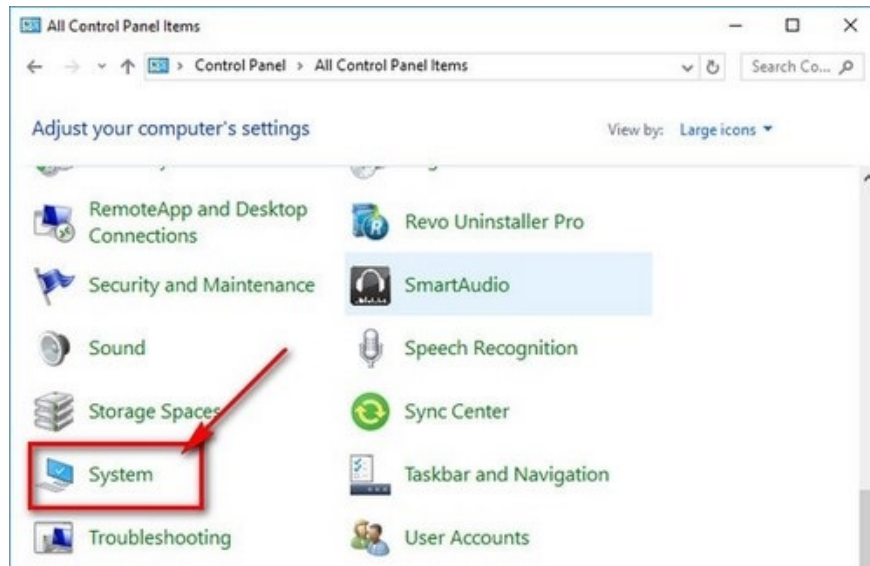
In the Startup type select Disabled and then click OK to completely turn off the Superfetch service. After shutting down this service, your computer may boot a little longer, but the full disk error will be gone.



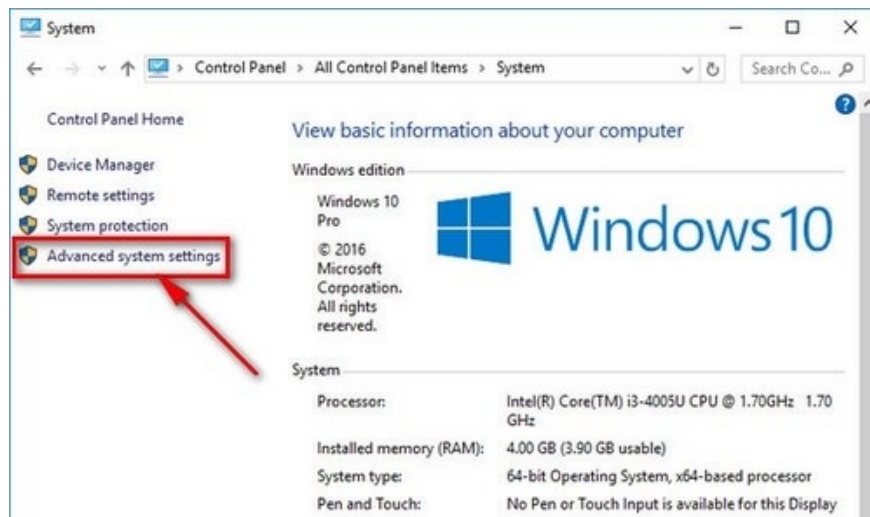
Method 6: Limit virtual memory

The virtual memory feature (Virtual Memory) helps your RAM offload when shared memory from the HDD. When enabled, Windows will continuously use your hard drive (about a few GB) as temporary storage to replace RAM. When storing large data, it is very easy to cause a full disk error, so you should limit virtual memory to help your hard drive operate more smoothly.

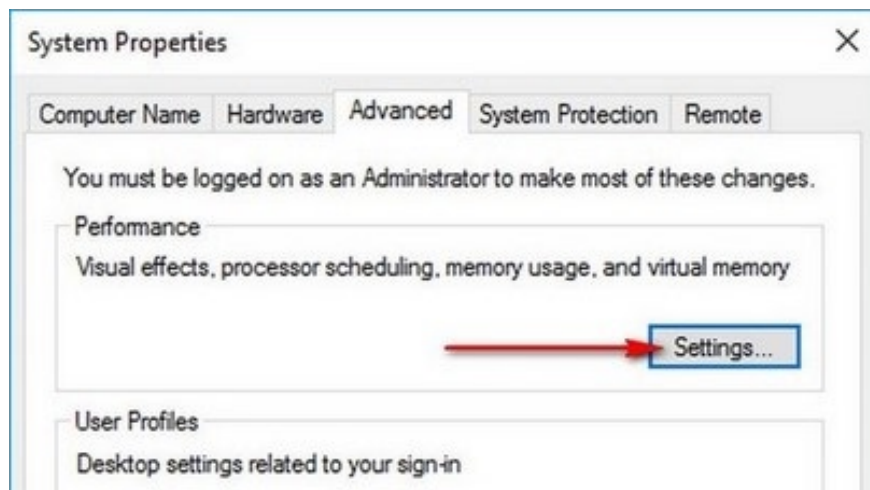
Open Control Panel window from Start Menu, select System item



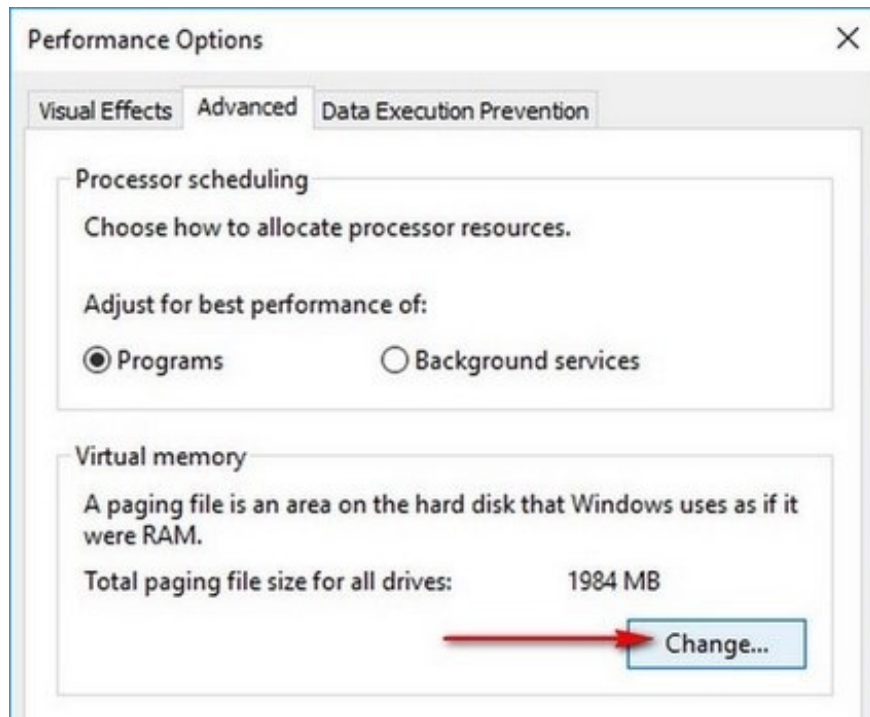
On the System window select Advanced system settings in the left pane.



Select Settings... under Performance in the System Properties window



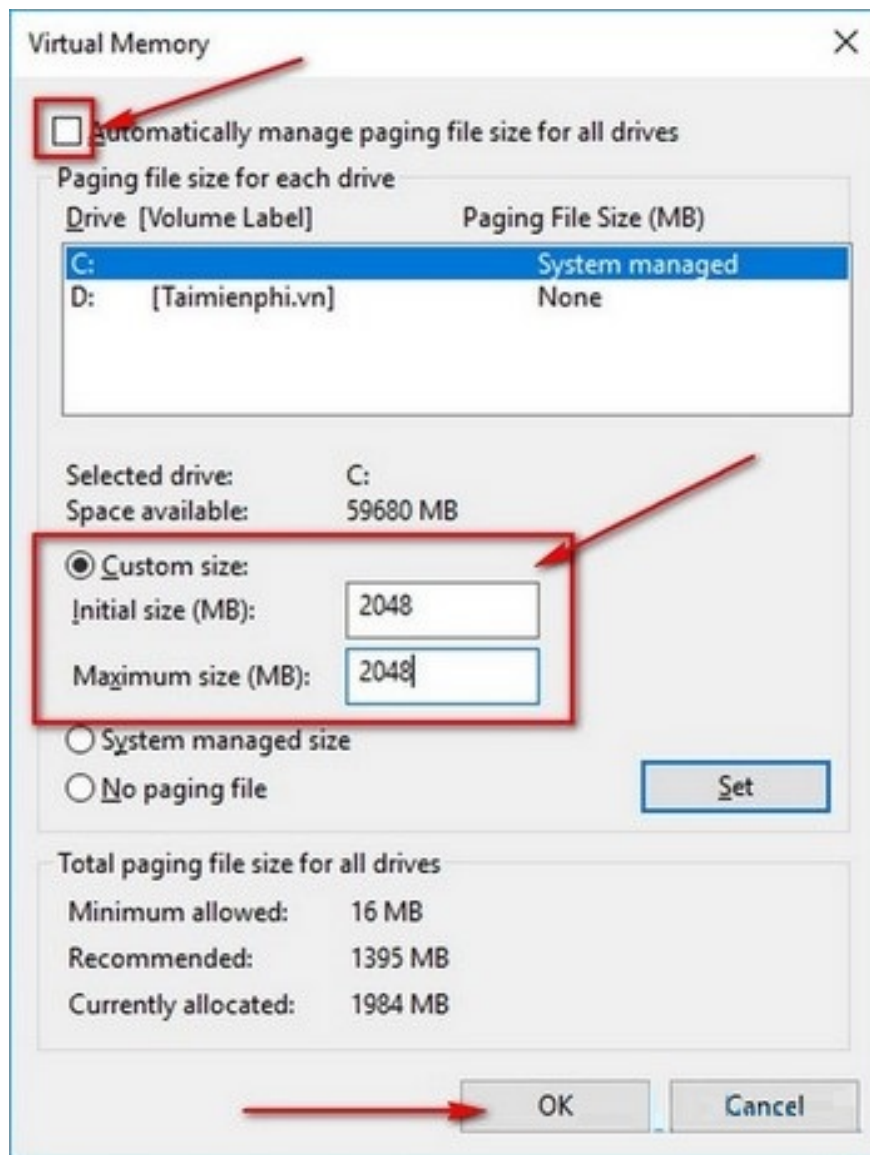
Continue to select Change... in the Virtual Memory section to make changes to virtual memory



Here you uncheck the box before Automatically manage paging file size for all drives then customize the storage capacity in the Custom size section:

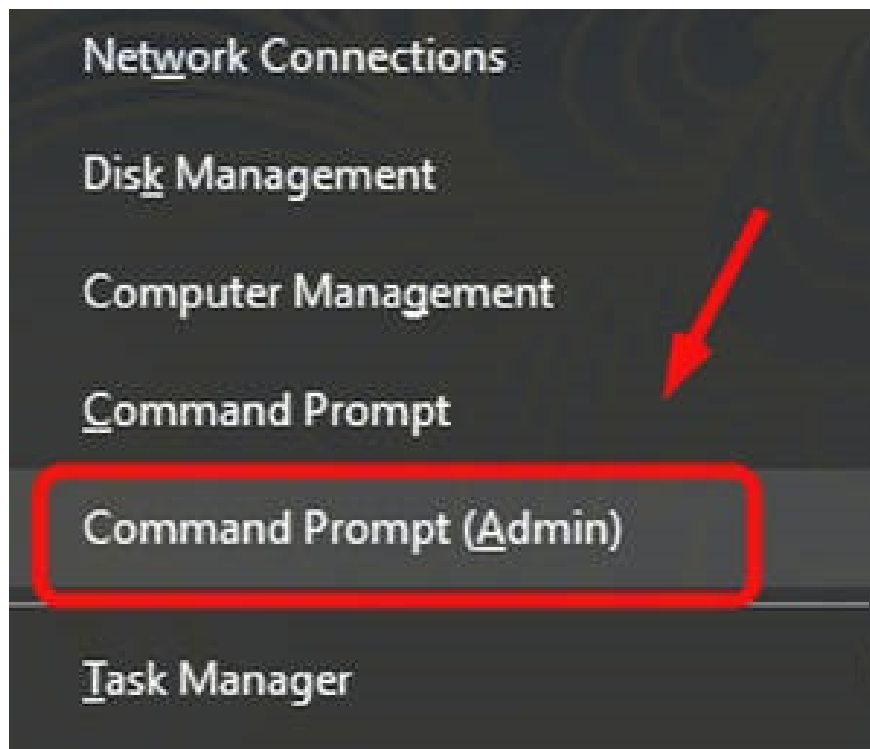
1. Initial size (MB): Minimum size
2. Maximum size (MB): Maximum size

You should set the minimum and maximum capacity = 1/2 of your RAM, for example if your real RAM has 4GB, you should only set the size to 2048MB (1GB = 1024MB) to avoid consuming too much space. The hard drive causes a full disk error, then click OK to complete the virtual memory setup.

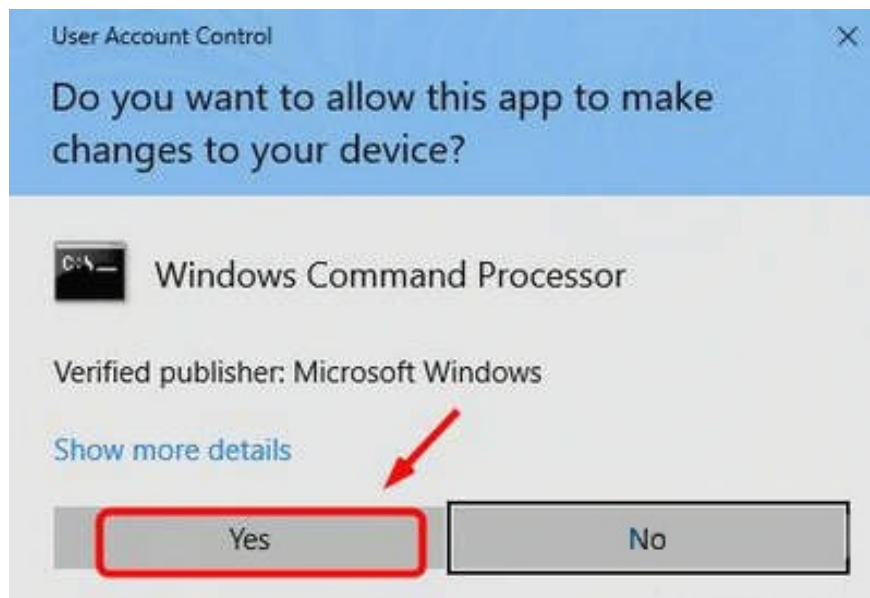


Method 7: Use the command check disk

Step 1: Press the Windows + X key combination to open the Power User Menu, where you select Command Prompt (Admin).



Step 2: Click Yes on the UAC (User Account Control) window.



Step 3: On the Command Prompt window, enter the following command:

```
chkdsk.exe / f / r
```

Step 4: Press Enter, then type Y to confirm you want to use the command to check for hard drive errors after your computer has finished booting. Note that you must first close the windows of all applications and programs that you are opening.

```
Administrator: Command Prompt
Microsoft Windows [Version 10.0.15063]
(c) 2017 Microsoft Corporation. All rights reserved.

C:\Windows\system32>chkdsk.exe /f /r
The type of the file system is NTFS.
Cannot lock current drive.

Chkdsk cannot run because the volume is in use by another
process. Would you like to schedule this volume to be
checked the next time the system restarts? (Y/N) Y

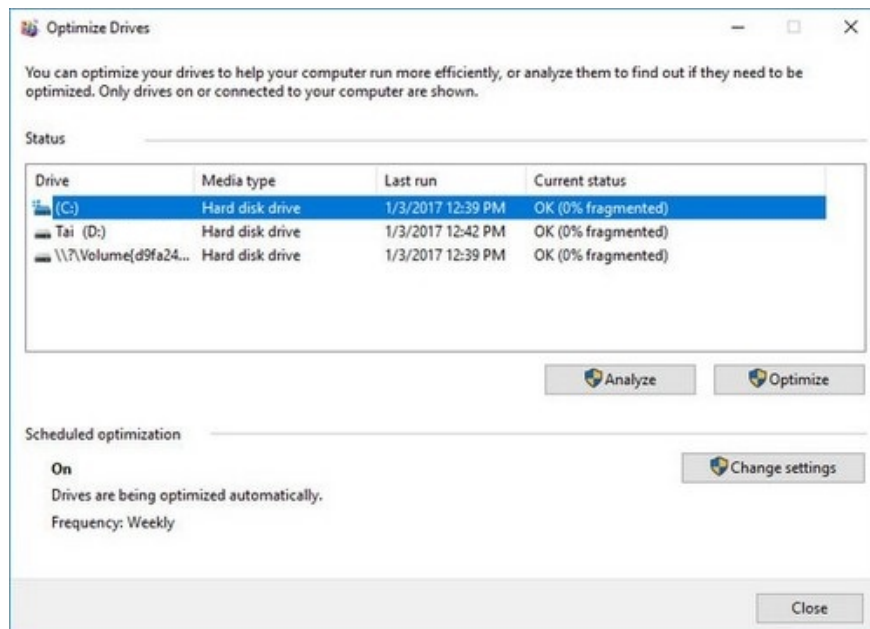
This volume will be checked the next time the system restarts.
C:\Windows\system32>
```

Important Note:

Check Disk will start examining the hard drive after the computer has finished booting, and the checking process can take a long time (maybe even a day or more). After your computer has finished booting up, if there is not much time to wait until the scan finishes, you can skip the process, but you will have to schedule the scan again.

Method 8: Defragment the hard drive

After a period of using the hard drive, your computer will easily appear bad streaks, fragments, disturbing data on the hard drive. So sometimes when you use a computer that crashes or a full disk, the possibility of your hard drive being fragmented is not small. Currently there are many very good hard drive defragmentation software like Disk Fragmenter available in Windows or you can use HDD Generator.



Method 9: Temporarily disable anti-virus programs

If you have anti-virus programs and software such as Norton, Kaspersky, AVG or Malwarebytes installed on your Windows computer, try disabling these programs and check to see if you can fix Full Disk error 100% on

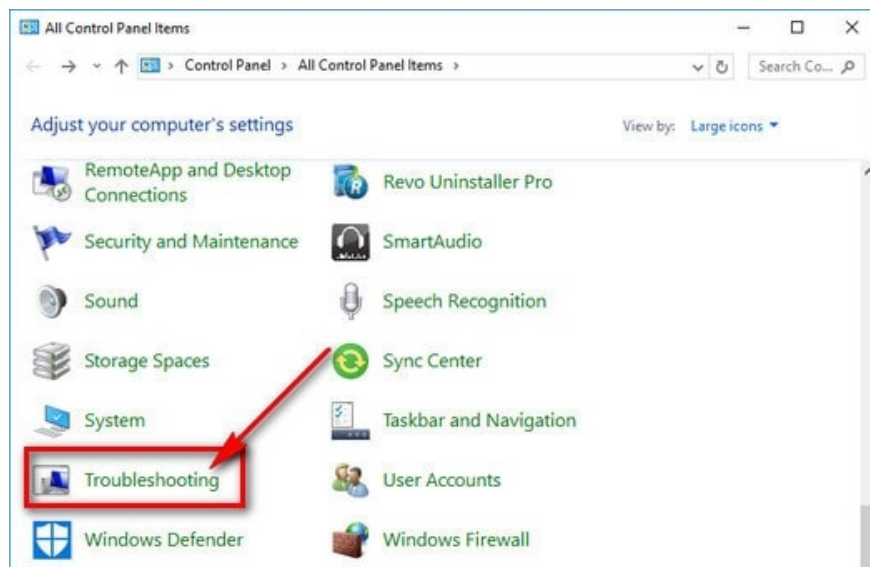
Windows 10, 8.1, 8, 7 were successful or not. If the error no longer exists, it proves that this anti-virus software program is the cause of the Full Disk error 100%. In this case you can contact the anti-virus software developer for assistance.

Note that Microsoft installs Windows Defender by default on Windows 10. This anti-virus software is activated automatically even when users install and disable other anti-virus programs. So even if you disable programs and other antivirus software on your system, there is no need to worry too much because Windows Defender will protect your system for a certain period of time.

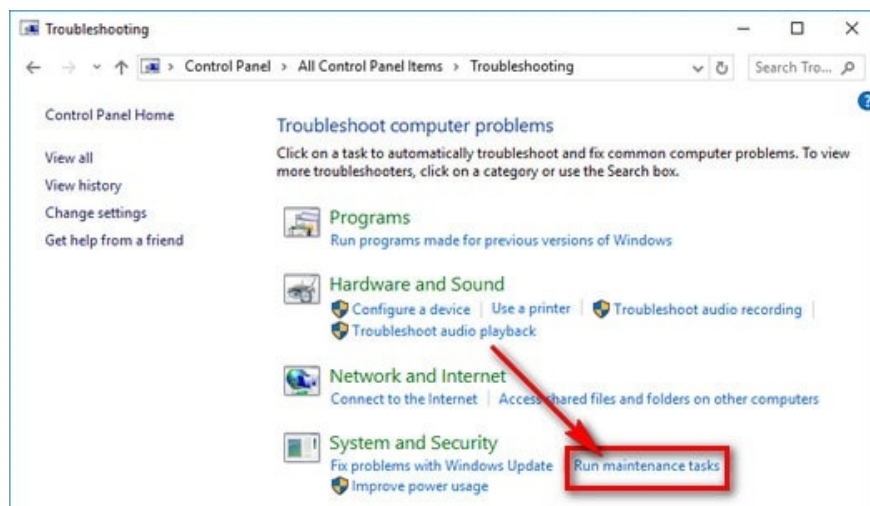
Method 10: Use Troubleshooting

On Windows 7/8 / 8.1 / 10, there are integrated Troubleshooting feature to help the system detect errors and repair them very useful.

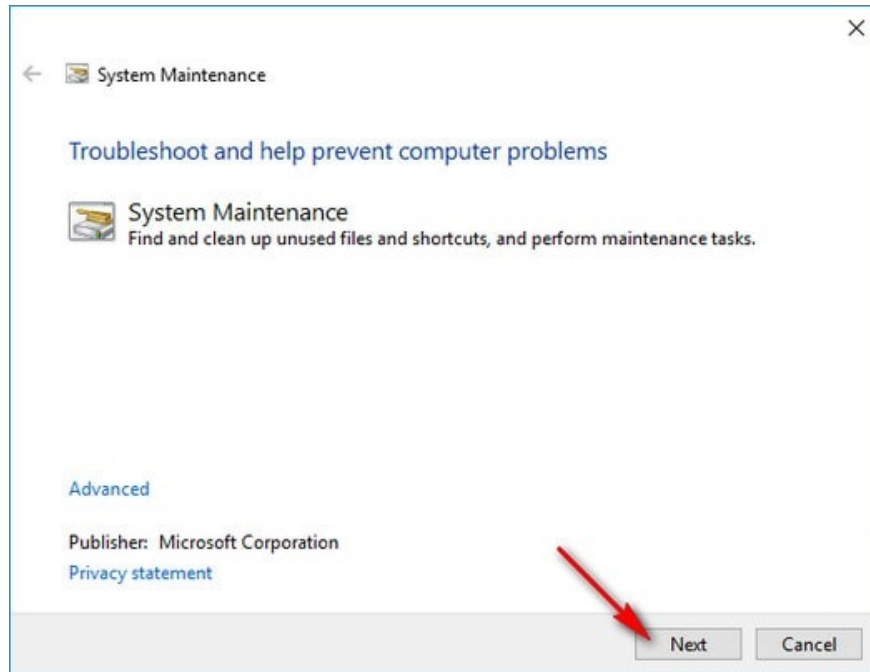
Access Control Panel from Start Menu and navigate to Troubleshooting section



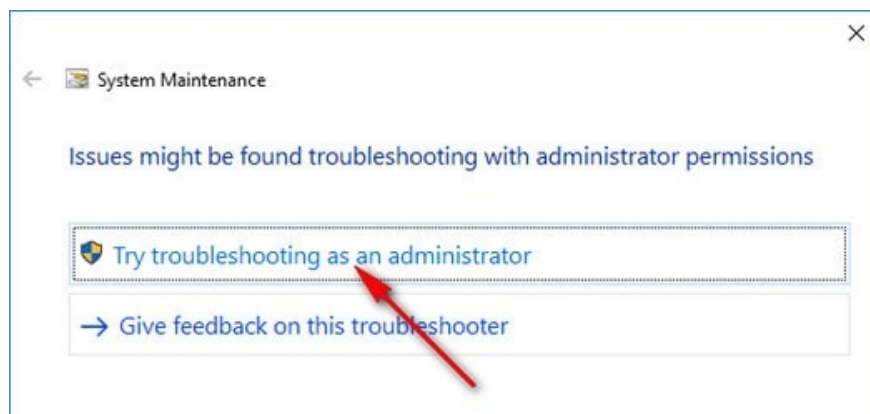
In the Troubleshooting window, select Run maintenance tasks



Click Next to let the scanner scan for errors, system problems, specifically, full disk errors.



After the scan is complete, the scanner asks you to scan under admin rights, click Try troubleshooting as an administrator and wait for a while the scanner will automatically find and fix the 100% disk error for you.



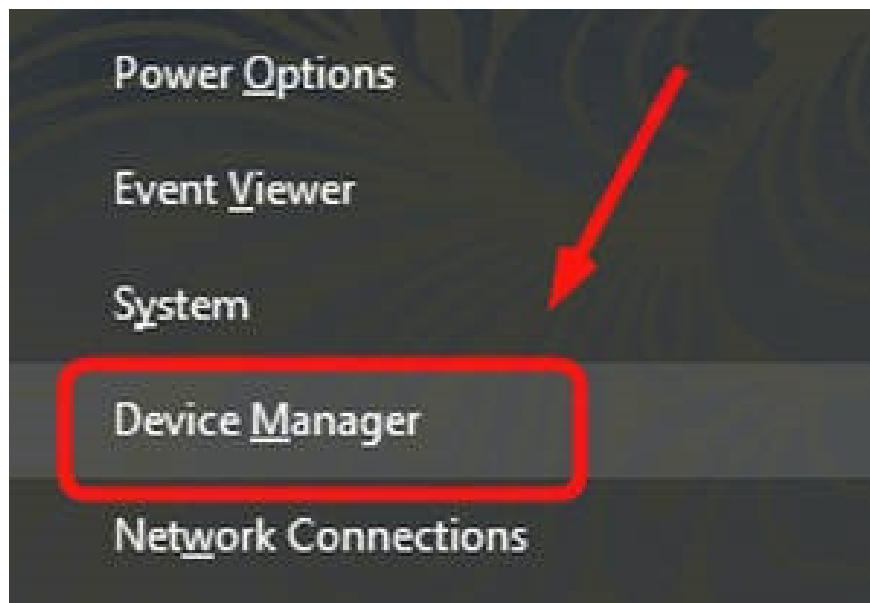
Method 11: Fix driver error StorAHCI.sys

If all of the above methods have been applied and it is still useless, the error of Full Disk 100% still exists, try this solution to see if it helps you or not.

The cause of the Full Disk 100% error on Windows 10 can be because the Advanced Host Controller Interface PCI-Express (AHCI PCIe) running the StorAHCI.sys driver has a software error.

Here's how to determine if the cause is the StorAHCI.sys driver and how to fix the error:

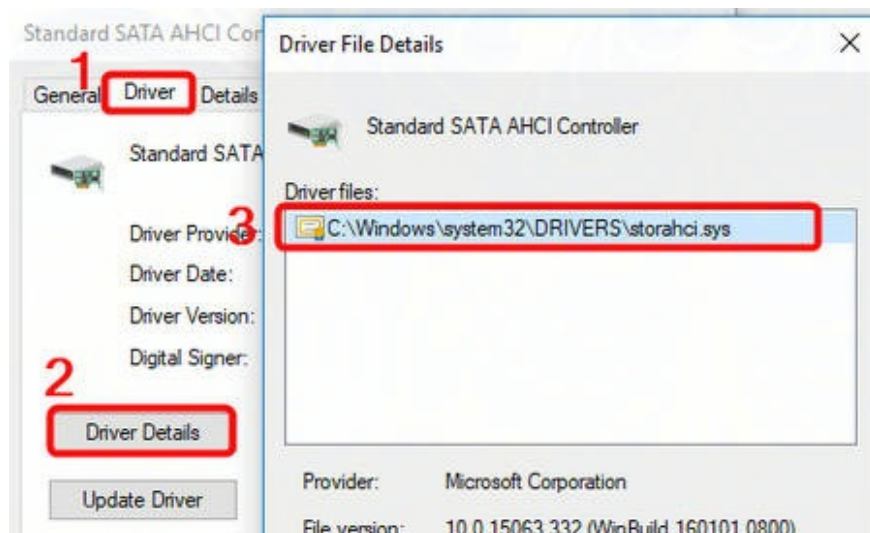
Step 1: Open the Device Manager window by pressing Windows + X to open the Power User Menu, then select Device Manager.



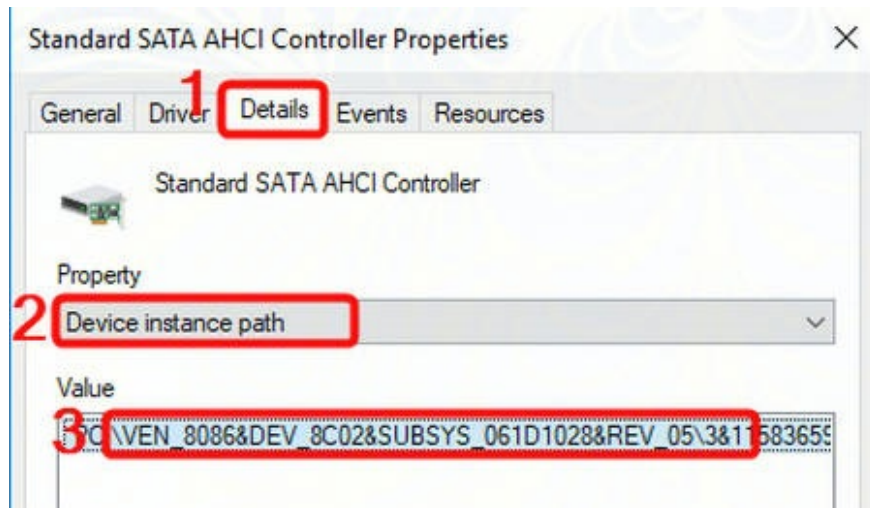
Step 2: Expand IDE ATA / ATAPI Controllers, then find and double click on AHCI controller.



Step 3: On the next window, access the Driver tab, find and click Driver Details. If you see storahci.sys in the system32 folder path, it means that you are running AHCI driver.



Step 4: Close the Driver Details window and access the Details tab. From the menu you choose Device Instance Path. Note the path starting at VEN_.



Step 5: Type regedit in the Search box on the Start Menu, then press Enter to open Registry Editor.

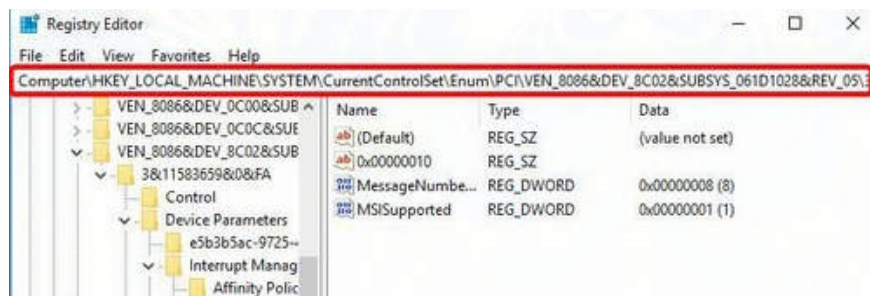
Next, navigate to the key:

HKEY_LOCAL_MACHINE\System\CurrentControlSet\Enum\PCI\Device Parameters\Interrupt Management\MessageSignaledInterruptProperties

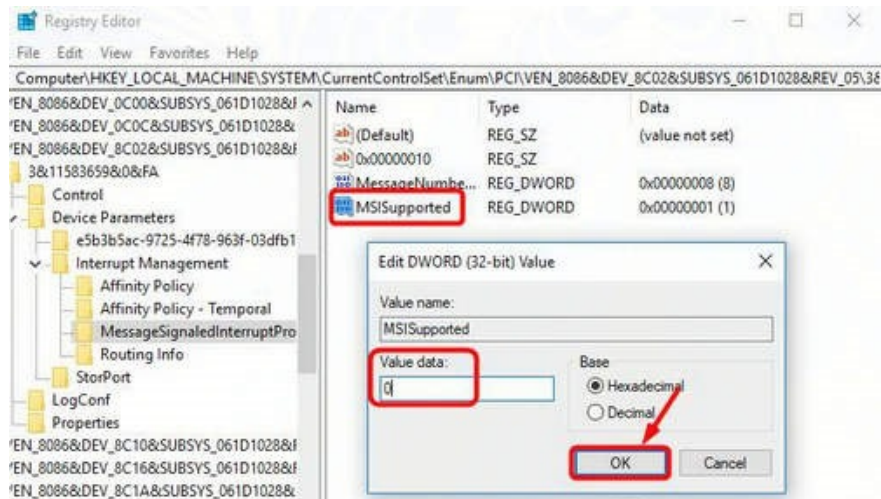
Inside:

Here is the name you saw in step 2.

different on different computer models.



Step 6: Find and double click on MSISupported and change the value in the Value data box to 0.



Step 7: Finally restart your computer to apply the change and check if the Full Disk error 100% persists or not.

Method 12: Update the latest driver version

If the methods above do not fix the Full Disk 100% error on Windows 10, the cause may be due to the device driver, such as your computer has not installed the latest driver version.

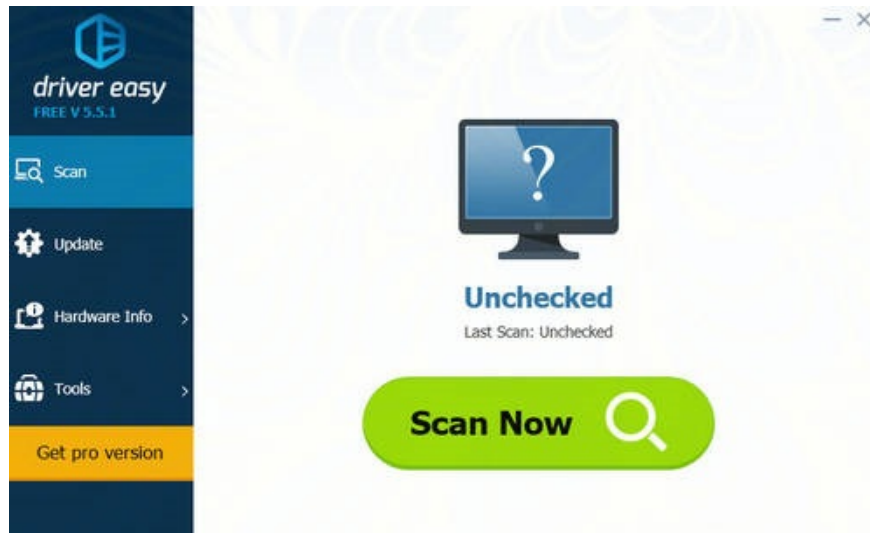
To automatically update all the latest driver versions on your computer you can thanks to the help of Driver Easy.

Driver Easy will automatically recognize your system and find the latest and correct driver versions for your system. You don't need to worry about downloading and installing the wrong driver, and it's important not to worry about crashing the installation.

With both Driver Easy Free version and Pro version, you can update your system driver automatically. However, with the Pro version, with only 2 clicks, you have completed updating the latest driver version for your device.

Step 1: Download Driver Easy [here](#) and install.

Step 2: After the installation is complete, run Driver Easy and click the Scan Now button. Then Driver Easy will automatically scan your computer and find out if any drivers are faulty or not.



Step 3: Click the Update button next to the flagged driver to automatically download and install the correct and latest driver version (you can do this with the free version). Or click the Update All button to automatically download and install all missing or outdated driver versions on your system (you will be prompted to upgrade to the Pro version when you click the Update All button).



Method 13: Some additional ways

Also you can apply some other ways below to fix Full Disk error 100% on Windows 10, 8.1, 8 and 7:

- Supplement 1:

Step 1: Use the key combination Ctrl + Shift + Esc to open Task Manager.

Step 2: Right-click on Disk and set the value Resources Values ??from Values ??to Percents.

Step 3: Watch out for processes that consume high disk resources.

Step 4: Click on the arrow icon next to the suspicious process to see its service.

Step 5: Open the Services window by pressing Windows + R key combination to open the Run command prompt, then type services.msc into it and press Enter.

Step 6: Find suspicious services and stop them.

Step 7: Right-click on the service that is the culprit, select Properties to open the properties window of the service, where you have the option to disable that service completely.

Step 8: Finally, check if the error Full Disk 100% still exists or not.

- Additional way 2:

Windows' antivirus program could also be the culprit for the 100% Full Disk error. Follow the steps below to fix the error:

Step 1: Press the Windows + W key combination and enter administrative tools into the Search box.

Step 2: Select Administrative Tools and then select Task Scheduler.

Step 3: Next in the left pane, navigate to the following key:

Task Scheduler Library / Microsoft / Windows / Windows defender

Step 4: Uncheck all the items in Idle, Power and Network.

Step 5: From now on, no need to scan your computer anymore.

- Additional way 3:

Some users share that after they uninstall Flash Player update, the Full Disk 100% error no longer appears on their computer. To uninstall Flash Player updates, go to Windows update history, then find the Update Flash Player option and select Uninstall to uninstall.

Some software causes full disk error 100%

In addition to the computer having too many services running, due to the update, the 100% full disk error caused by the software is also quite encountered.

1. Google Chrome

Google Chrome 'notorious' is one of the browsers that eat up CPU, RAM and can be the cause of 100% Disk error. To fix 100% Disk error you can disable some extensions (extensions), plugins and some features that directly affect Disk Usage.

Follow the steps below:

1. - Open Chrome, type `chrome://settings/` in the address bar (URL) of the browser and press Enter.
2. - Scroll down to find and click Show advanced settings (show advanced settings).
3. - Uncheck the option named Use a prediction service to load pages more quickly.
4. From the Settings window of your browser, click Extensions, then disable the extensions you want.
5. - Enter `chrome://plugins/` into your browser's address bar and disable unnecessary plugins.
6. Restart your Google Chrome browser.

2. Skype

Skype is also one of the "assigned" programs with a name that consumes a lot of Disk Usage and CPU space. On Windows 10 and Windows 8, Microsoft integrates this application on the operating system. There are two options given that it is to completely remove Skype or set up customizations if you still want to use Skype

- Option 1: Remove Skype

You can remove the Skype application if you do not use it by removing Skype in the Uninstall a Program of Control Panel or by using programs and software such as Your Uninstall.

- Option 2: Do not remove Skype, follow the instructions below:

+ Access by link:

C: Program Files (x86) SkypePhone with Windows 64bit or C: Program FilesSkypePh

Right click on skype.exe and select Properties.

+ On the Properties window, on the Security tab, click the Edit button.

+ Select ALL APPLICATION PACKAGES and then uncheck the Write entry.

+ Click Apply and then click OK.

There are many different ways to fix the 100% full disk error, but TipsMake just outlined the main cause and how to fix it for you. If you find that your computer shows signs of slow, frozen, hanging processing that is not due to full disk, read through the article on how to fix the problem of the computer to hang to understand the solution.

Good luck !

You finished reading the article "**Fix Full Disk error 100%, 99% on Windows**" edited by the [TipsMake](#) team. We hope this article has provided you with many useful tech tips and tricks. You can search for similar articles on tips and guides. Thank you for reading and for following us regularly.