

## First laptop integrated Leap Motion sensor

HP's laptop integrated Leap Motion is Envy 17. HP's new Envy 17 laptop is no different from the Envy 17 that HP currently sells on the market, with its luxurious aluminum design, backlit keyboard, , sound Beats goods brand.

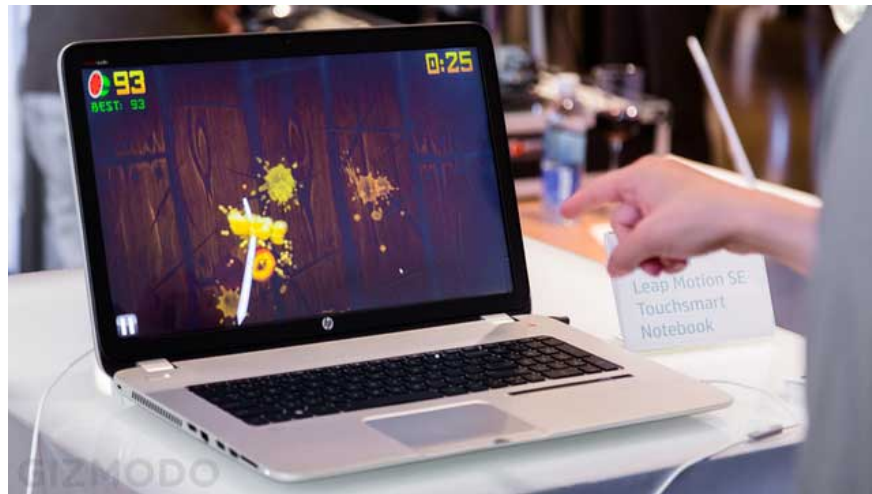
**As we know before, after the Leap Motion motion sensor was introduced, there were many computer manufacturers promising to integrate Leap Motion into their products. And today, HP pioneered the introduction of the first laptop with this unique sensor.**

HP's laptop integrated Leap Motion is **Envy 17**. HP's new Envy 17 laptop is no different from the Envy 17 that HP currently sells on the market, with its luxurious aluminum design, backlit keyboard, , sound Beats branded goods; except that it is added Leap Motion on the upper right side of the touchpad (black strip as you can see in the image below). This sensor allows you to perform manual manipulation operations for games and applications on the computer.



At the request of the partner, HP has preinstalled on a shortcut to the Airspace Store app store of this sensor so that users can explore the app store (which currently has more than 100 numbers) optimized for Leap Motion. You can disable Leap Motion by **pressing the space bar and the Fn key** . A small LED will notify you whether the sensor is turned on or off.

One point worth noting is that despite inserting the sensor inside, HP still helps the Envy 17 to retain its original thinness (3.5 mm). The device will be sold on **October 16** with a starting price of **1049 USD**.



## Test Leap Motion on Envy 17:

You finished reading the article "**First laptop integrated Leap Motion sensor**" edited by the [TipsMake](#) team. We hope this article has provided you with many useful tech tips and tricks. You can search for similar articles on tips and guides. Thank you for reading and for following us regularly.