

Finding compounds can kill 25% of all cancers in the test environment

A new medical discovery has just been found that could open a new era for many patients with different types of cancer ...

A new medical discovery has just been found that could open a new era for many patients with different types of **cancer** .

Scientists at the Eliza Institute in Australia have developed a new type of **medical compound** that **inhibits the development of many different types of cancer cells** in the laboratory at a successful level of prevention. to ¼.

This new compound is essentially a new biological molecule whose scientific name is **S63845** has been successfully developed. The specificity of this compound is to prevent MCL1 protein molecules from connecting to cancer cells. Because before, MCL1 was judged to be a protein that provides a source of life for cancer. So, in general terms, compound S63845 will cut the aid source of cancer cells and prevent them from developing.



Photo source: Internet

In the experiment of interaction between S63845 compound with different **cancer cells** in the lab, the results showed that this compound prevented ¼ of cancer cells from developing them. These include white blood cell cancer, myeloma, lymphoma, and myeloma.

The team is now expecting the compound to continue working with lung and breast cancer cells in subsequent intensive tests.

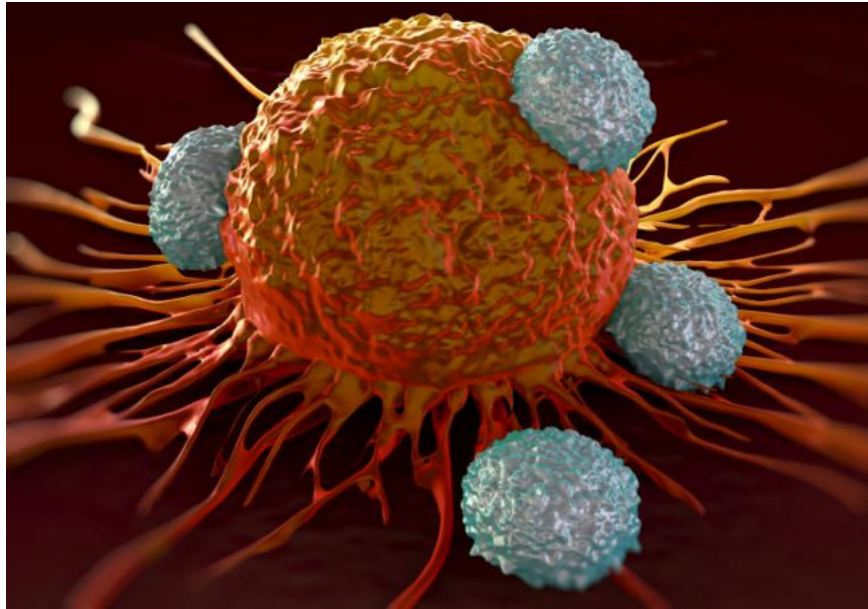


Photo source: Internet

In addition, many medical experts believe that there are many cancer drugs in the world that have similar characteristics as compound S63845, preventing the life of cancer cells. However, these drugs always **have** terrible **side effects** , which can affect and destroy damage to other cells. However, with compound S63845, experts believe it overcomes this deadly weakness.

It is known that the compound S63845 is developed in a chemical class found in BH3 mimetics, a powerful specialized drug for cancer treatment, especially against the cancer cell MCL1.

However, all are tested only in the pre-clinical stage. Currently, the research group is continuing to study more intensively on this compound before applying the test on human body.

You finished reading the article "**Finding compounds can kill 25% of all cancers in the test environment**" edited by the [TipsMake](#) team. We hope this article has provided you with many useful tech tips and tricks. You can search for similar articles on tips and guides. Thank you for reading and for following us regularly.