

Find the router's IP address in macOS

In case you are using macOS, if you have any problems switching ports or the system is unstable, you need to log in to your router or modem to reconfigure. But to do this, we must find the IP address of the router first

In case you are using macOS, if you have any problems switching ports or the system is unstable, you need to log in to your router or modem to reconfigure.

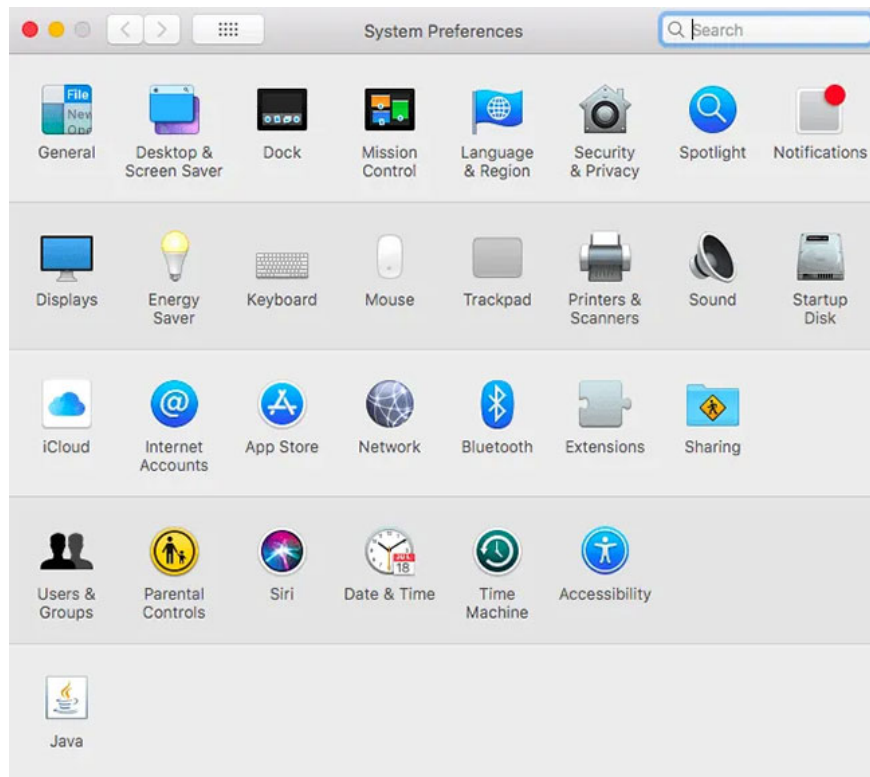
But to do this, we must find the IP address of the router first. In the following article, I will show you some basic steps to perform this process.

There are several different ways to get the router's IP address on Mac.

1. Find the router IP address through the Mac user interface

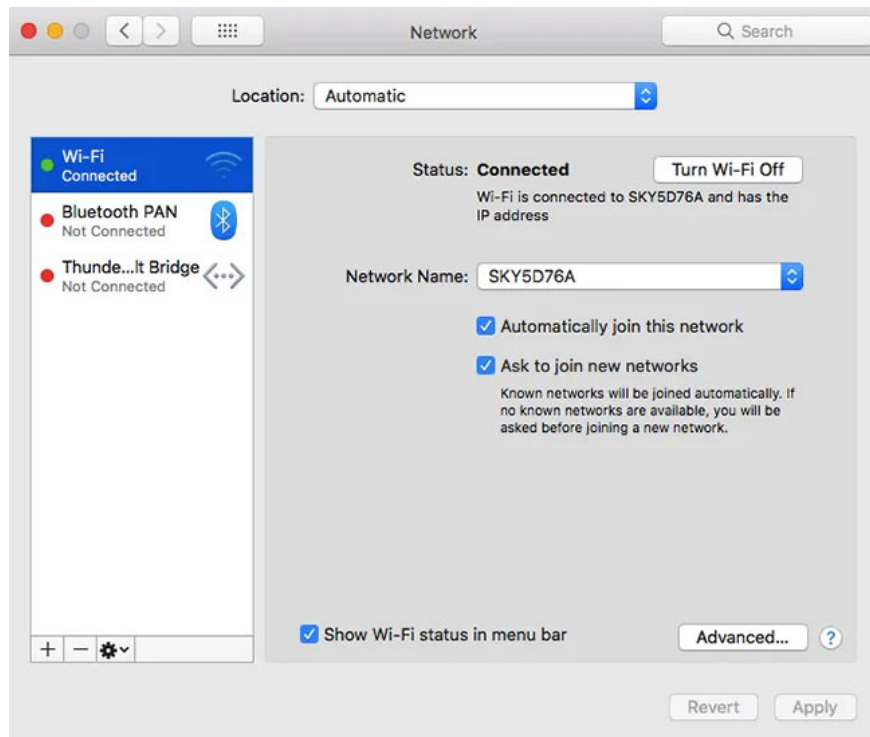
You can access this important piece of information, by navigating to Network settings:

1. In the Mac toolbar, select the **Apple** logo .
2. Navigate to **System Preferences> Network** .



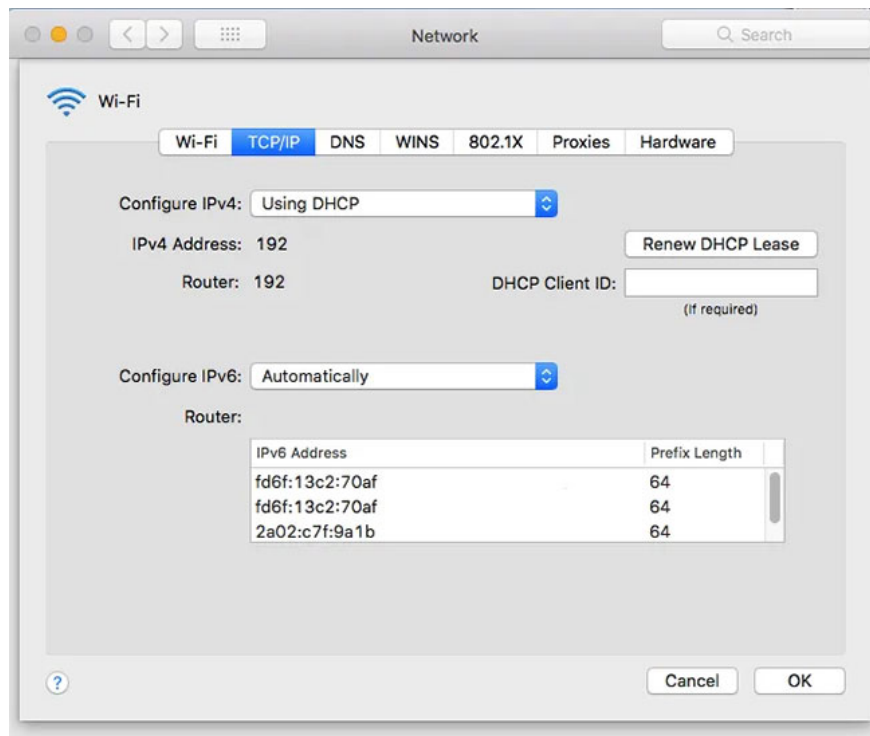
Navigate to System Preferences> Network

1. In the left menu, select the network interface to which you are currently connected, usually **Wi-Fi**.



In the left menu, select the network interface to which you are currently connected

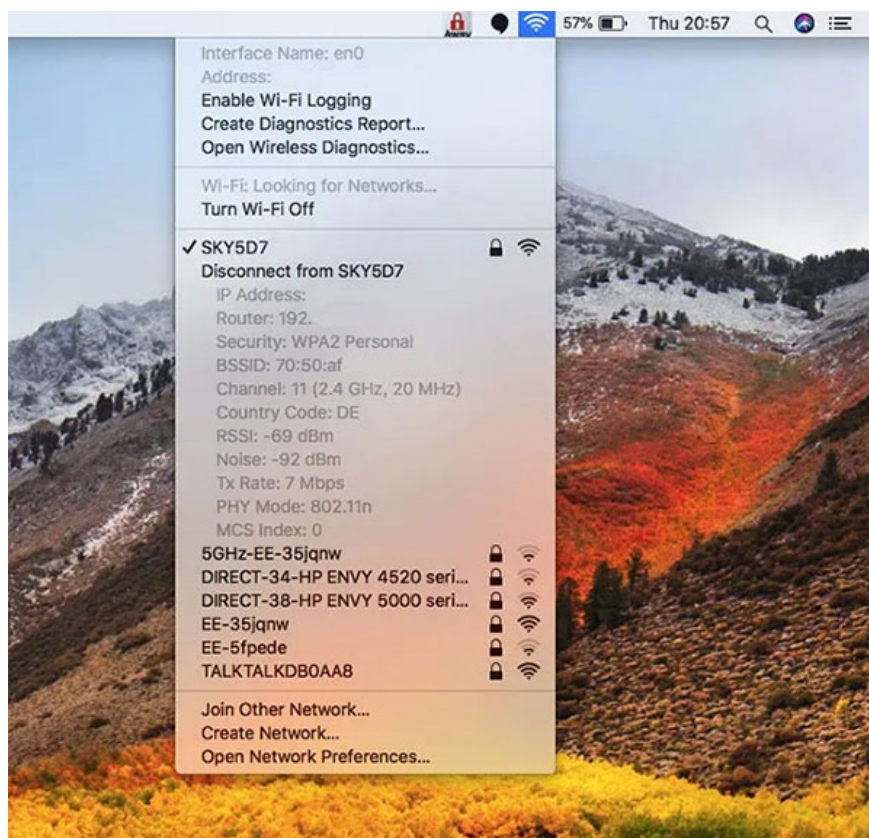
1. Click the **Advanced** button .
2. Select the **TCP / IP** tab .



Select the TCP / IP tab, the IP address of the IP router is displayed in the Router section

1. The IP address of the IP router is the numeric address shown in the **Router** section .

Alternatively, if you're using a newer version of macOS, you can access this information in the Mac's **Wi-Fi** drop-down menu . Just hold the key **Option** while clicking the WiFi icon on the menu bar, and this information will appear in the expanded drop-down menu.



Hold down the Option key and click the WiFi icon in the menu bar, information about the router's IP address will appear in the extended drop-down menu.

2. Find the router IP address via Terminal on Mac

If you're comfortable using the command in Terminal, then you can access the router's IP address with a single command:

1. Open a new **Finder** window .
2. Navigate to **Applications > Utilities** .



Navigate to Applications > Utilities and open the Terminal application

1. Open the **Terminal** application and enter the following command in Terminal:

```
netstat -rn |grep default
```

The terminal will return the network connection information and IP address of the router, displayed along with **'default'**.

Good luck!

You finished reading the article "**Find the router's IP address in macOS**" edited by the [TipsMake](#) team. We hope this article has provided you with many useful tech tips and tricks. You can search for similar articles on tips and guides. Thank you for reading and for following us regularly.