

# Find password of Word and Excel files with Word and Excel Password Recovery Wizard

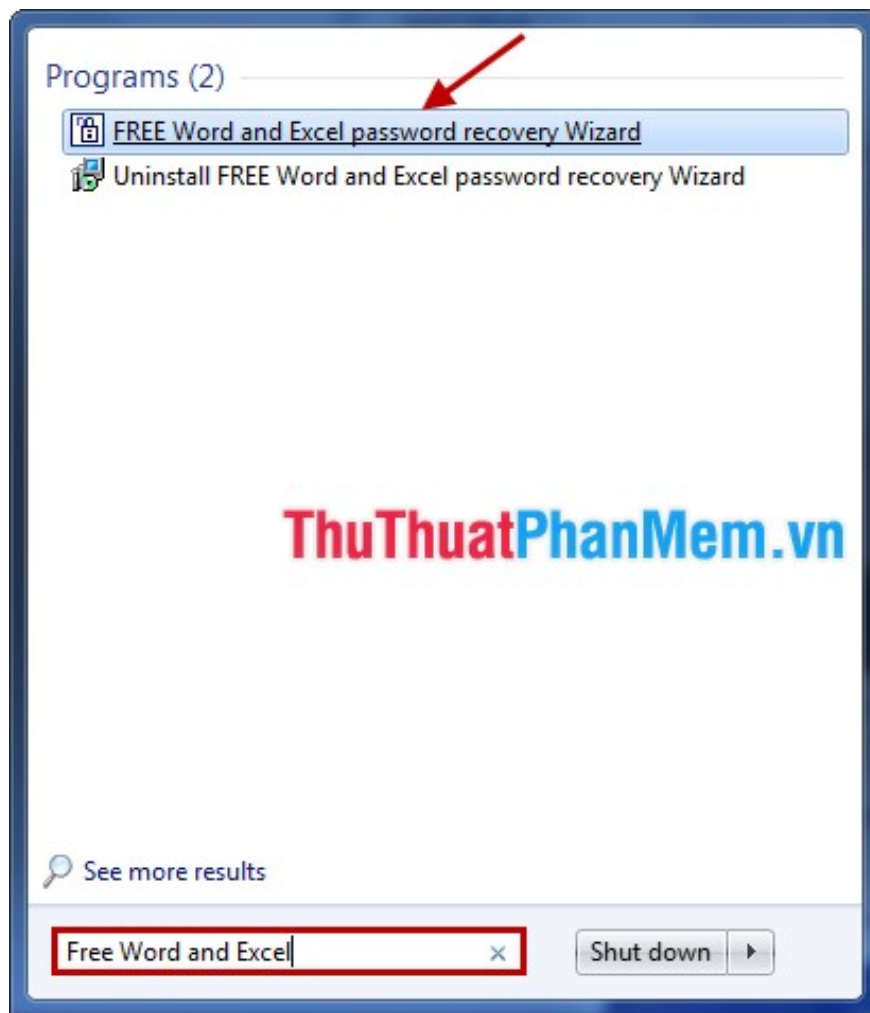
Set passwords for important Word or Excel documents to help you better protect your documents. But after a period of not using you forgot the password of that document. You can use the software Word and Excel Password Recovery Wizard

Set passwords for important Word or Excel documents to help you better protect your documents. But after a period of not using you forgot the password of that document. You can use the Word and Excel Password Recovery Wizard, the software that helps you recover your Word or Excel file password even with the most complex passwords.

The following article shows how to retrieve password of Word and Excel files with the Word and Excel Password Recovery Wizard.

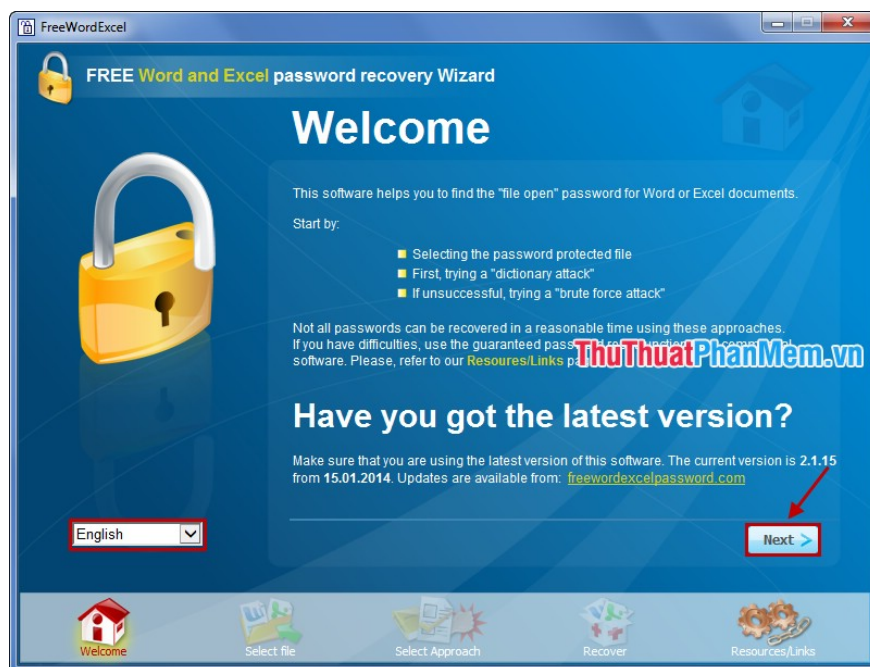
**Step 1:** Download and install the Word and Excel Password Recovery Wizard.

**Step 2:** Open the program.



**Step 3:** The first interface appears is the **Welcome** window , you choose the language of the program for convenience and ease of use.

Then click **Next** to continue.



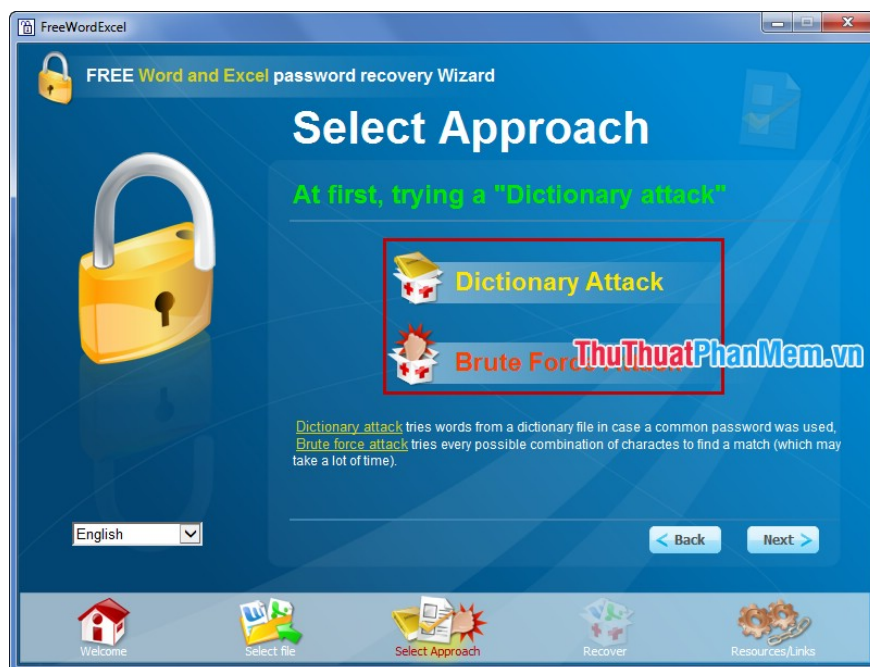
**Step 4:** The **Select File** window appears, in the **Select a password protected file**, click **Browse** and select the Word or Excel file to retrieve the password.



**Step 5:** In the **Select Approach** window , you have 2 modes:

- **Dictionary Attack:** use when you have a Text file which contains different passwords and contains passwords of Word or Excel files you need to retrieve the password.

- **Brute Force Attack:** use when you do not remember anything and do not save the password of the file.



## 1. Select Dictionary Attack.

If you choose this mode, in the **Select a wordlist** section, select **Browse** and select the file containing the passwords you have.

Then tick 4 custom: lower case, UPPER CASE, Title case, Plural (s, es) in **Recovery Options** . Then click **Next**



## 2. Select Brute Force Attack.

Select the character limit in the **Character sets** section , search for passwords by az or 0-9, uppercase letters or special characters.

In the **Password Length** , you select the password length in the range From (from), To (to) that you have set. Then click **Next** .



**Step 6:** After selecting and setting the search mode, next to the **Recovery** window, select **Go** for the program to start executing.



When the password is found, the following message will appear:



So, with very simple steps, you can retrieve your Word and Excel file password. But the time it takes to recover the password depends on the length and complexity of the password that the program will produce results quickly or slowly. Good luck!

You finished reading the article "**Find password of Word and Excel files with Word and Excel Password Recovery Wizard**" edited by the [TipsMake](#) team. We hope this article has provided you with many useful tech tips and tricks. You can search for similar articles on tips and guides. Thank you for reading and for following us regularly.