

Find files on Windows super fast with Locate32

Finding files on Windows super fast using Locate32 is a way to use software to search for files at lightning speed. Follow TipsMake's instructions to find files quickly and save time.

Locate32 and Ava Find are both compact but powerful software programs for searching files in Windows. However, Ava Find doesn't have the same simple, user-friendly interface as Locate32. But in terms of search power, both are considered to have almost instantaneous search speeds.



In fact, to search for files in Windows, users don't necessarily need software. Microsoft has built-in My Computer with built-in file search tools, allowing users to search files without additional software. However, this method is very slow, especially on computers with a lot of storage space. To search for files super fast, follow our instructions below. Searching for

files on Windows super fast with Locate32

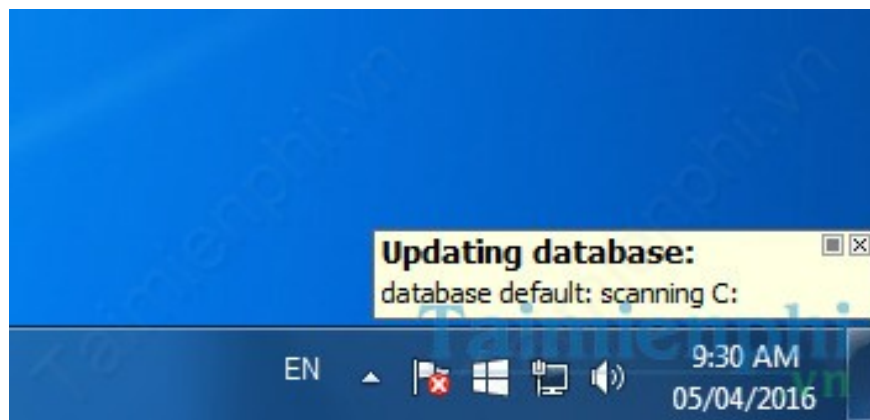
- Download Locate32: [Download Locate32](#)

Step 1: Download and select the 32-bit or 64-bit version of Locate32 to your computer. Then click install the software quickly.

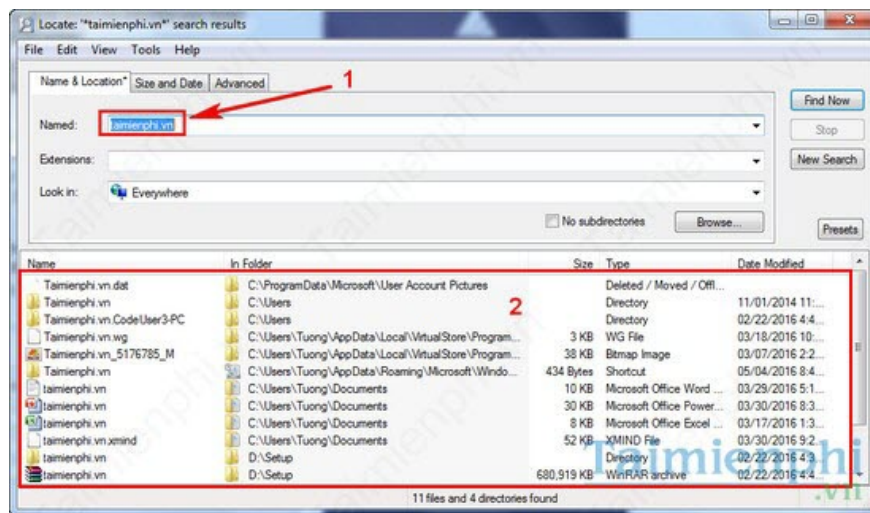
Step 2: In the Locate32 interface, click File => Update Database => 1:default. This is the method used when first using Locate32, allowing the software to update data on your computer.



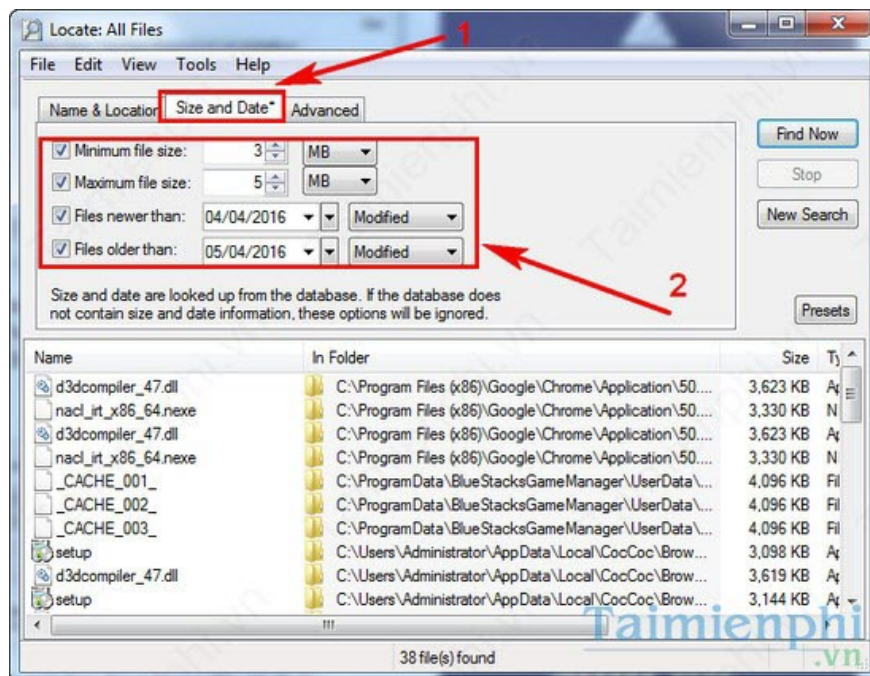
The software will update the data within a few minutes.



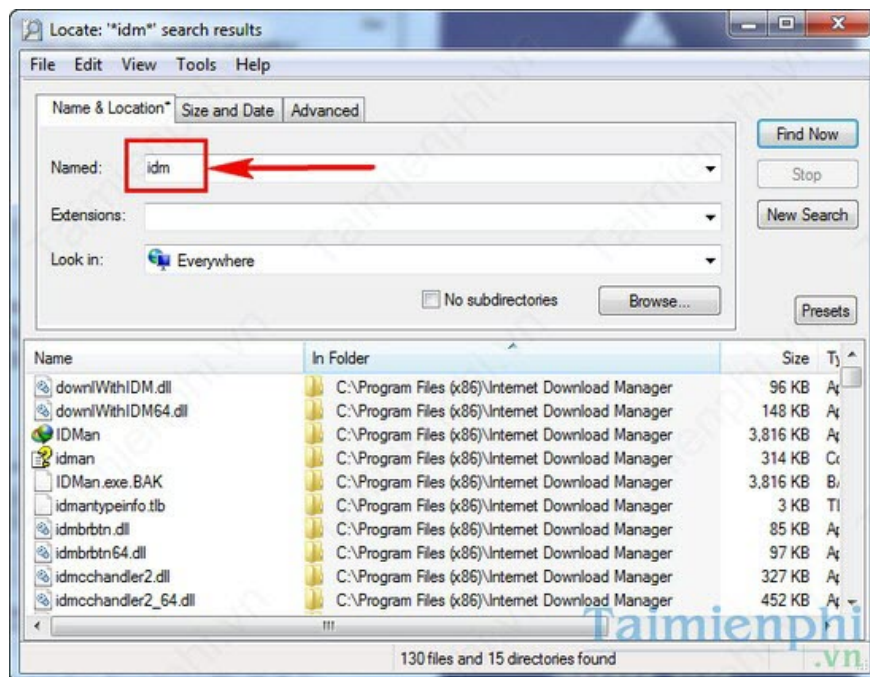
Step 3: Return to the software interface. In the Named section, you can enter the name of the file you want to search for. For example: TipsMake. Immediately, a series of related folders and files will appear below.



Step 4: If you don't remember the file name, you can search by file size, including minimum (Minimum filesize) or maximum (Maximum filesize). You can also limit the search by date to make it easier for Locate32 to find out when that file first appeared on Windows.



Additionally, you can quickly search for other software in the Named section.



TipsMake has just provided detailed instructions on how to quickly find files on Windows using Locate32. Typically, after searching for files, users will move those folders and files to a USB drive or other hard drive. For large files of several GB or tens of GB, you should copy them using Tera Copy. When you copy files using Tera Copy, the copying speed can reach up to 4MB/s, making file copying faster than ever (refer to how to speed up file copying). We hope you find this useful!

You finished reading the article "**Find files on Windows super fast with Locate32**" edited by the [TipsMake](#) team. We hope this article has provided you with many useful tech tips and tricks. You can search for similar articles on tips and guides. Thank you for reading and for following us regularly.