

Fever with a implant device creates a false scene to catch breast cancer cells

A new technology implant is evaluated to be able to confront breast cancer cells with unprecedented ways of operating.

A new technology implant is evaluated to be able to confront breast cancer cells with unprecedented ways of operating.

According to a latest report published in the Journal of Cancer Research, a new implant device implanted under the skin right in the breast cancer area on the female body is considered as one of the optimal solutions. will prevent the spread of **breast cancer cells** to other parts.

Before, we knew that breast cancer always had metastasis, cancer cells could spread, metastasize to other organs such as heart, liver, lungs, palate . and make disease People can die quickly.

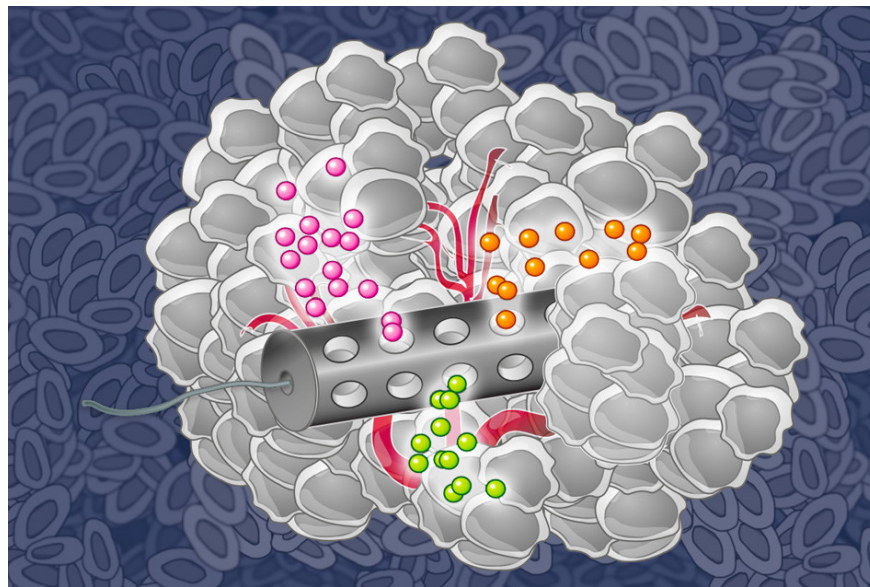


Photo source: Internet.

The new discovery shows that there is a small implant, made in the form of scaffolding, small in size, creating a fake scene right near the breast cancer cell area in the form of a fake organ in the muscle. can.

The device is made of biodegradable biotechnological compounds with suture and wound dressing. This device can work for one to two years in a human body. The mechanism of operation of this device is extremely optimal, helping to prevent the spread of cancer cells in the process of waiting, find the **best method of treating breast cancer** , blocking the process of metastasis, prolonging the time period. treatment and life time for patients.

When implanted right near the breast cancer area, the implant will act as a false scene, like a fake internal organ. Shortening the distance traveled, breast cancer cells will seek to approach this device to spread the metastasis, unexpectedly with the built-in technology mechanism, invasive cancer cells will be affected by the device. arrest and isolate completely into this device. Avoid spreading bacteria to other internal organs like liver, lungs, heart .

Huynh Dung (According to Newkerala)

You finished reading the article "**Fever with a implant device creates a false scene to catch breast cancer cells**" edited by the [TipsMake](#) team. We hope this article has provided you with many useful tech tips and tricks. You can search for similar articles on tips and guides. Thank you for reading and for following us regularly.