

# Feature to create interesting hidden GIFs in Galaxy S8

Galaxy S8 phones all offer Samsung's Edge panel (Edge panel) feature. Let's see how to create GIF images in this phone!

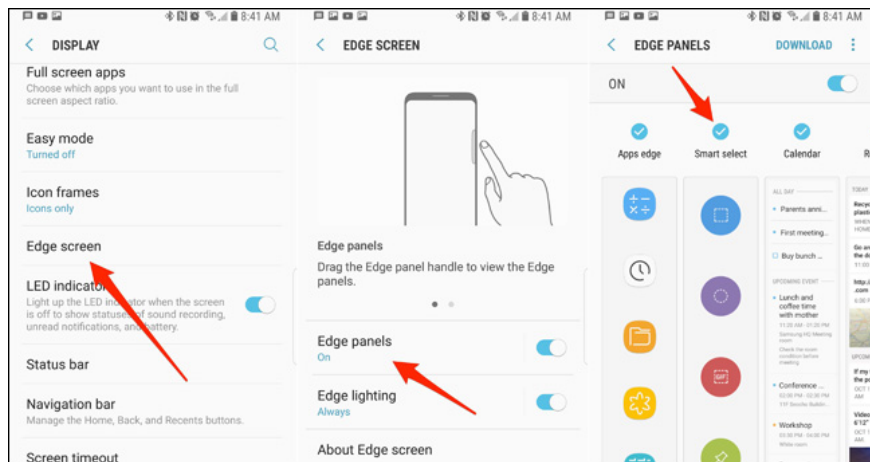
Galaxy S8 phones all offer Samsung's Edge panel (Edge panel) feature. Imagine the Edge control panels as an additional main screen, hidden next to the display screen, and it is ready to operate with just one swipe.

By default, S8's Edge control panels include application shortcuts, task shortcuts and a contact panel. However, there is another control panel that turns your Galaxy S8 into a device that creates extremely good GIFs - it's **Smart Select** .

You need to do a few more steps to set up this feature, then you can create GIFs with just a few clicks and touches.

## Add the Smart Select control panel

To add the Smart Select tool, open **Settings> Display> Edge screen> Edge panels>** and click on the **Smart Select** control panel to activate it.



## Create GIF images

When you find an interesting video to create a GIF, slide the Edge panel, then swipe through the tables until you find Smart Select. Tap the red **GIF** button, select the display area you want to capture and finally click **Record**.

You can create a GIF image up to 15 seconds in the quality settings. Once done, you can edit, share or save GIFs.