

Extremely strange and mysterious places known to the world thanks to Google maps

Google Maps - a mapping application based on data from space satellites was launched by Google in 2005. Since then, through this interesting application, many users around the world have discovered many interesting and surprisingly mysterious places.

Google Maps - a mapping application based on data from space satellites was launched by Google in 2005. Since then, through this interesting application, many users around the world have discovered many interesting and surprisingly mysterious places.

1. Mysterious series of holes in Peru



The mysterious pits in Peru are about 1.6km long with more than 6,000 holes of different sizes. This series of pits originates in the Pisco Valley, stretching all the way to the Andes. Their purpose is still a mystery.

Archaeologists believe that this may have been a burial place for ancient people, or to store something.

2. Super fingerprints in the UK



Fingermaze, located in Brighton, is a sculpture with symbolic meaning for the life journey of artist Chris Drury, completed in 2006.

This piece looks like a giant fingerprint when viewed through Google Maps.

3. The "locating" island in the Netherlands



The Netherlands has an artificial island located in Ketelmeer called IJseeloo with a circumference of only about 1km. The island was created for the purpose of storing polluted silt.

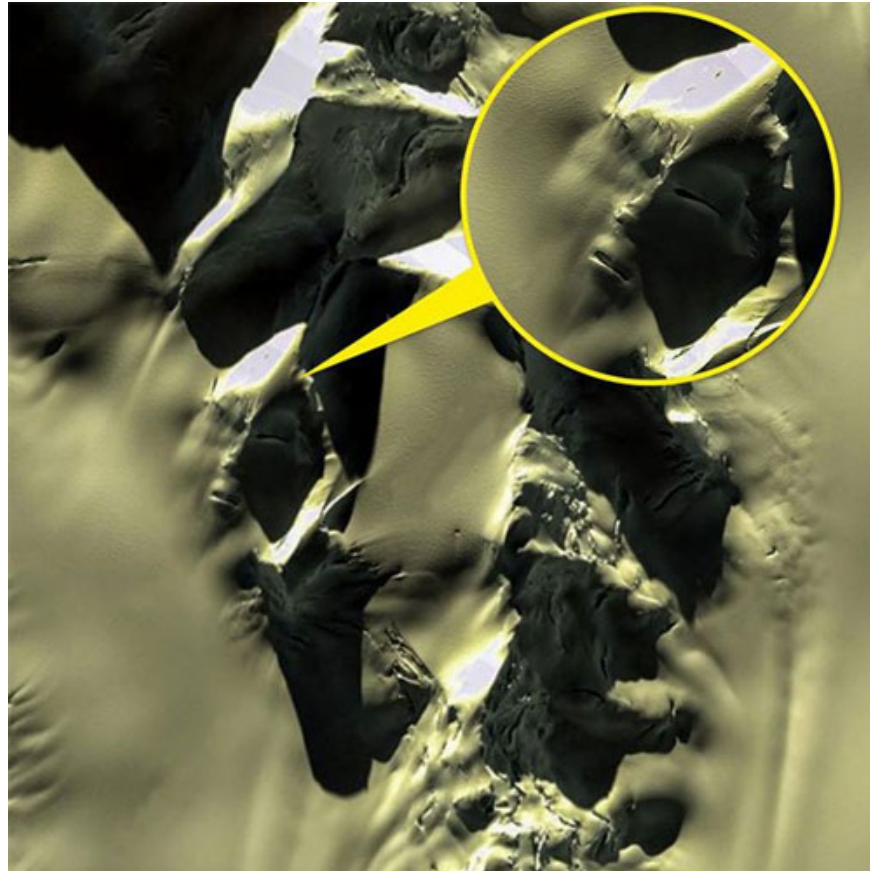
Looking at Google Maps, the island really looks like the app's location icon.

4. The Great Triangle of America



This strange place is actually an abandoned Air Force base from 1956 - 1966 and is located in Wittmann (Arizona).

5. Mysterious face in Antarctica



Google Maps satellite captured the above image of a mountain in Antarctica. Initially, many people thought this was evidence of the existence of aliens.

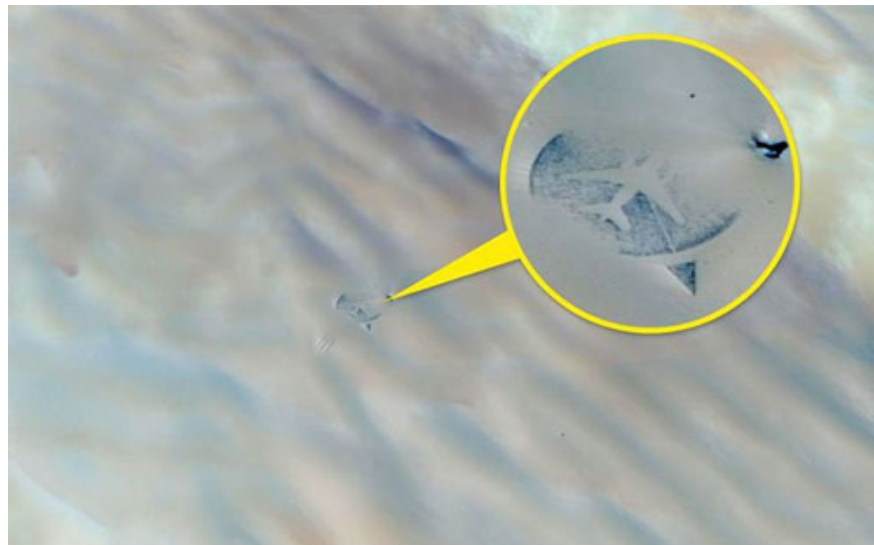
However, many other opinions believe that this is simply ice cracks, a completely random phenomenon of nature. We see it as a human face because of the pareidolia effect, a psychological effect that causes the brain to see objects in familiar images.

6. Strange symbol in the Chinese desert



The strange symbols in the Gobi desert have long been considered the work of aliens. According to researchers, they may simply be the result of research and survey activities in nickel mines.

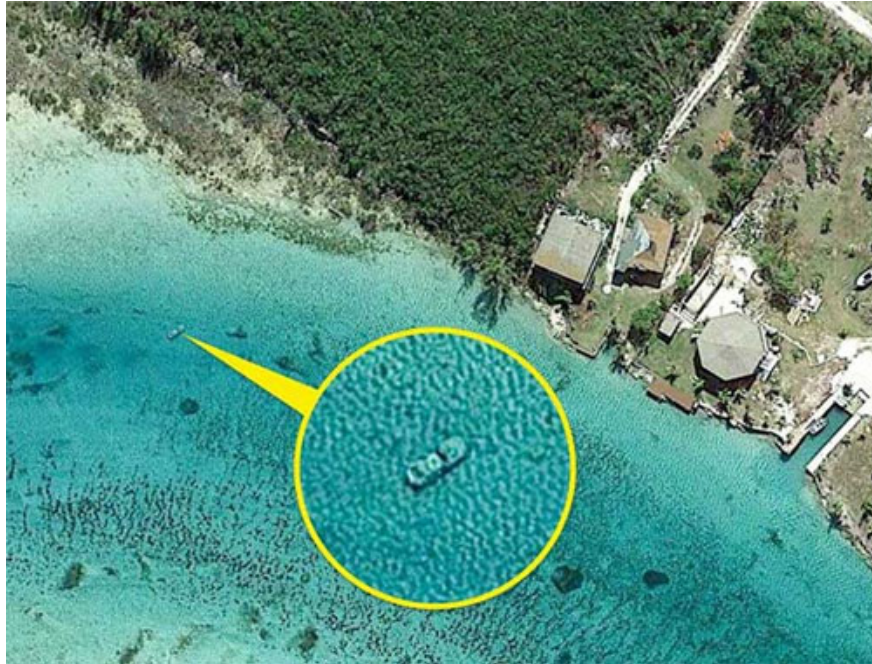
7. Memorial in the middle of the African desert



Pictured is a memorial built in the middle of the desert in the shape of an airplane. It was built in 2007 to commemorate a plane that exploded in the Ténéré Desert in 1989, killing 170 people.

Thanks to Google Maps, this memorial is now known to more people around the world.

8. The ill-fated car in the Bahamas



Another testament to the terrifying accuracy of Google Maps. The reason the car is underwater in the photo above remains a mystery.

9. Giant stele in America



The symbol in the photo is used to calibrate aerial photographs. In fact, there are quite a few air bases in the desert that have similar symbols.

You finished reading the article "**Extremely strange and mysterious places known to the world thanks to Google maps**" edited by the [TipsMake](#) team. We hope this article has provided you with many useful tech tips and tricks. You can search for similar articles on tips and guides. Thank you for reading and for following us regularly.