

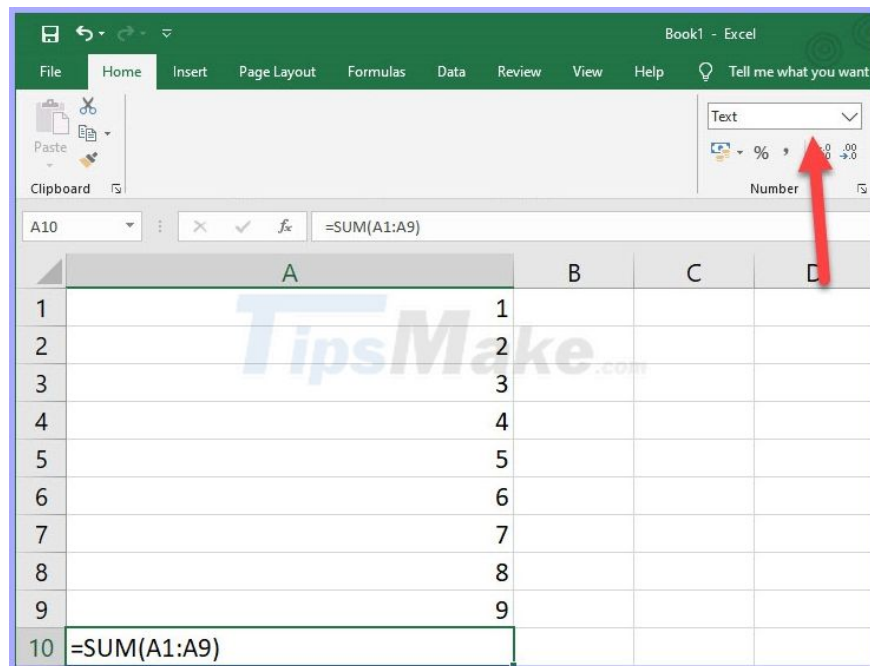
Excel errors do not jump formulas and fixes

Using Excel to calculate is a familiar job for office workers. There will be times when you encounter the error of not jumping the formula when using Excel without knowing what to do. In this article, TipsMake will name a few errors that cause this and help you know how to fix them.

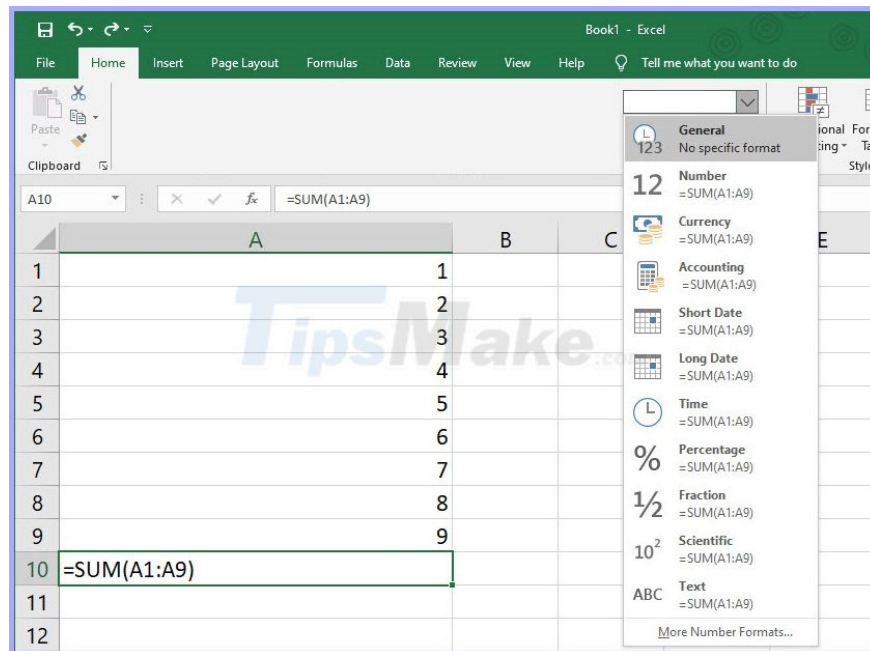
1. Do not jump formulas due to Text format

When the formula does not always jump to the result, it is most likely due to the format of your data box in the form of Text from the beginning. This means that when you fill in the characters even with the equal sign at the beginning, Excel will not recognize it as a calculation function but only as a literal character only.

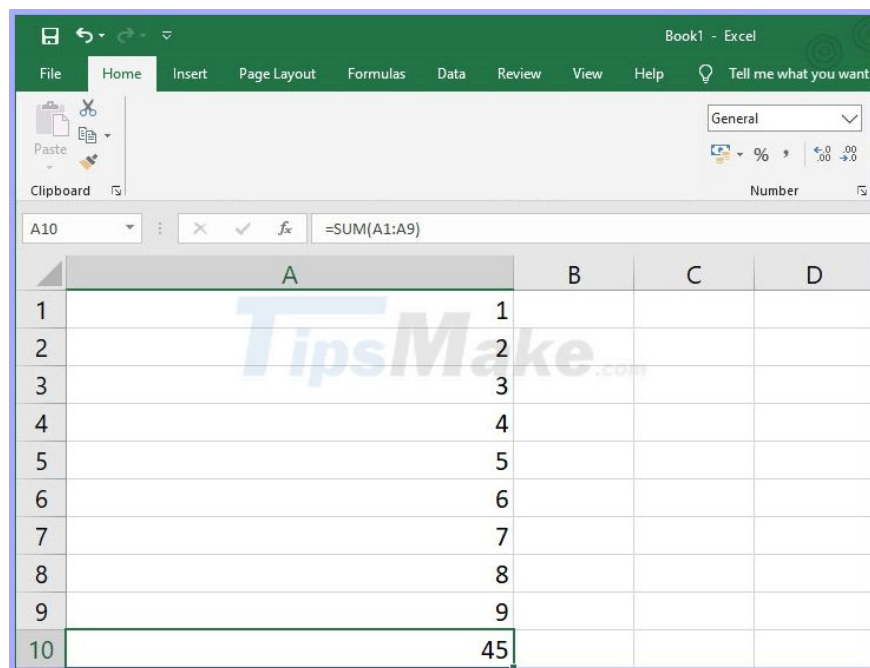
To be able to display the results of the function, change the **Text** in the **Number** group of the **Home** ribbon to **General** or **Number** format .



Ideally, you should leave it in the **General** format so that **Excel** automatically formats the function formula and creates the correct format for the data cell.



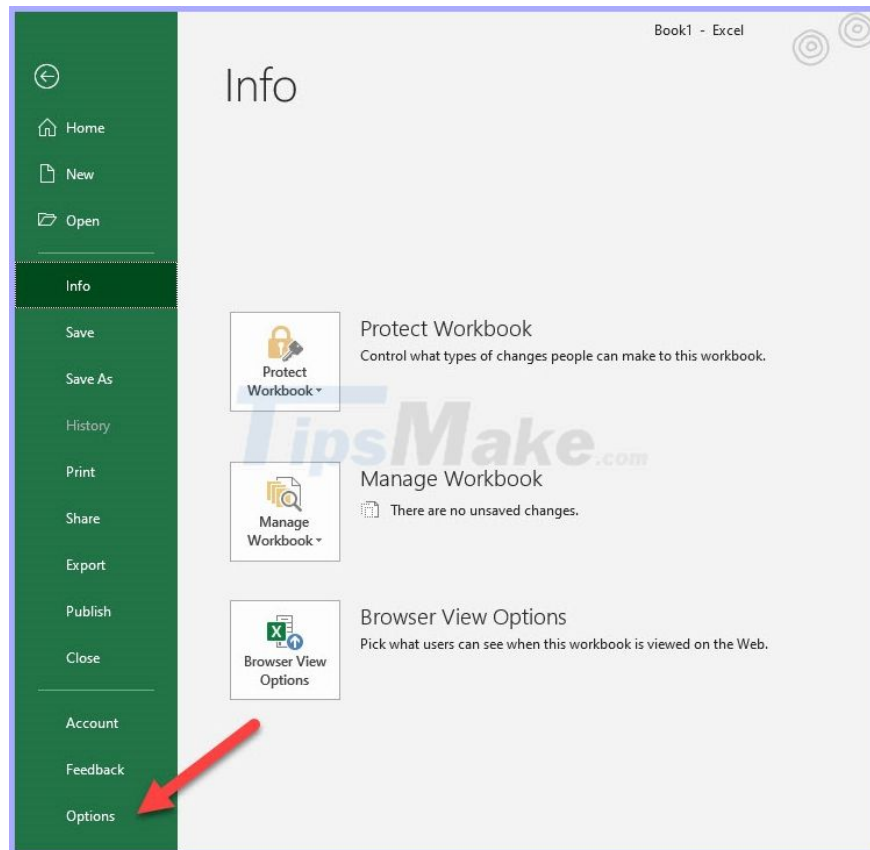
After changing the data cell format, click on the cell content and press **Enter** again to remove the formula.



2. Do not jump formulas because Excel is in the formula display mode

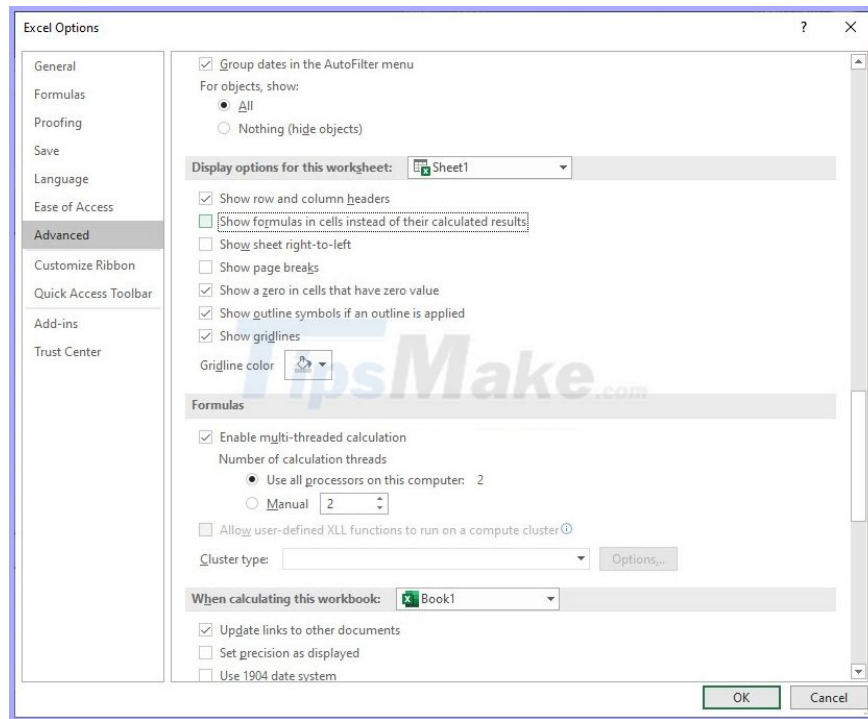
For the purpose of easily tracking formulas in data cells, Excel allows you to install this software in the formula display mode. That is, instead of displaying the result of a calculation, it will display the entire content of that calculation.

To turn this off, click the **File** ribbon in Excel's toolbar, and then select the **Options** line from the list of options.



The **Excel Options** function window will appear, switch to the **Advanced** tab and look for **Display options for this worksheet** .

In this section, you uncheck the **Show formulas in cells line instead of their calculated results** . Finally click **OK** to confirm the settings.



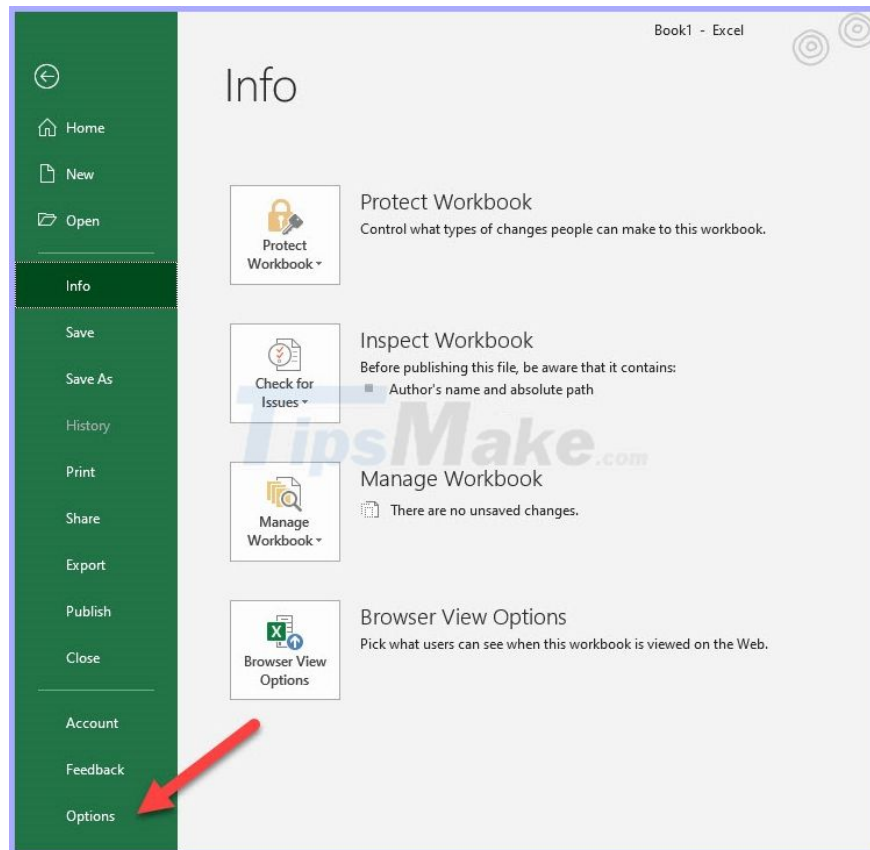
So you can display the results instead of Excel formulas.

Of course, the formula display mode is a commonly used mode and needs to quickly switch between the two states, so Excel has the default shortcut **Ctrl`** so you can quickly switch between the two display states. display and not display this formula.

3. Do not jump formulas because Excel is in manual calculation mode

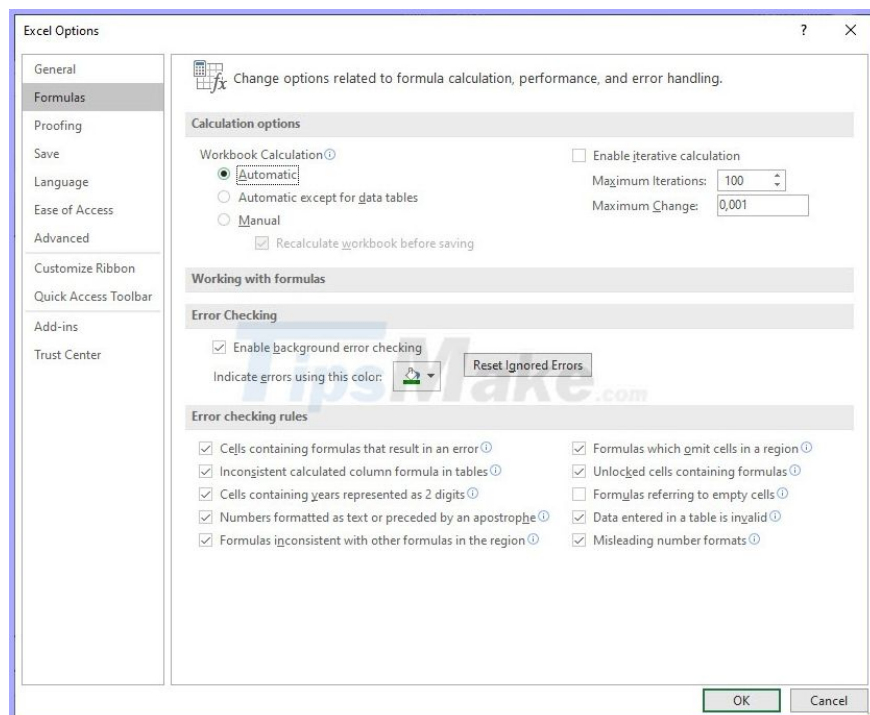
Except for the above two problems, you cannot see the result of the calculation immediately because your Excel is in **Manual** calculation mode . It may be because you accidentally pressed and the **Shift F9** key caused Excel to switch to calculation mode.

To get out of this mode and view the defaults, open the **File** ribbon on the toolbar. Next, click on **Options** in the **File** list of options .



In the **Excel Options** window , click the **Formulas** tab , in **Calculation options** , select **Automatic** in **Workbook Calculations** instead of **Manual** .

Finally click **OK** to confirm the settings change.



So you have fixed the error of not jumping the formula because Excel is in manual calculation mode.

You finished reading the article "**Excel errors do not jump formulas and fixes**" edited by the [TipsMake](#) team. We hope this article has provided you with many useful tech tips and tricks. You can search for similar articles on tips and guides. Thank you for reading and for following us regularly.
