

Excel error: Function not recognized

There are many reasons why Excel might not recognize functions, such as incorrect function input, errors in Excel itself, or problems with your computer.

It can be very difficult to work with Excel if it doesn't recognize functions or formulas. There are many reasons why Excel might not recognize functions, such as incorrect function input, errors in Excel itself, or computer problems. Below are ways to fix Excel not recognizing functions in each case.

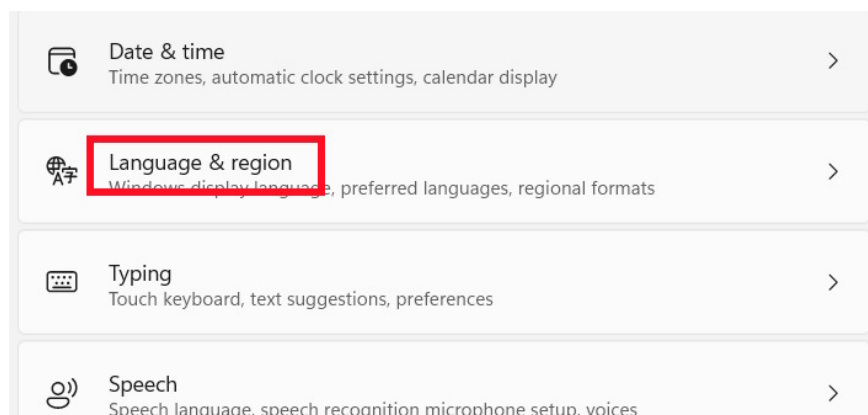
Checking input functions in Excel

If you enter the wrong function, Excel will not be able to recognize it. Even if you enter the wrong function rules within a range, an error will still occur, such as when using commas or semicolons in Excel functions .

Therefore, it is important to ensure that the version of Excel is suitable for your region.

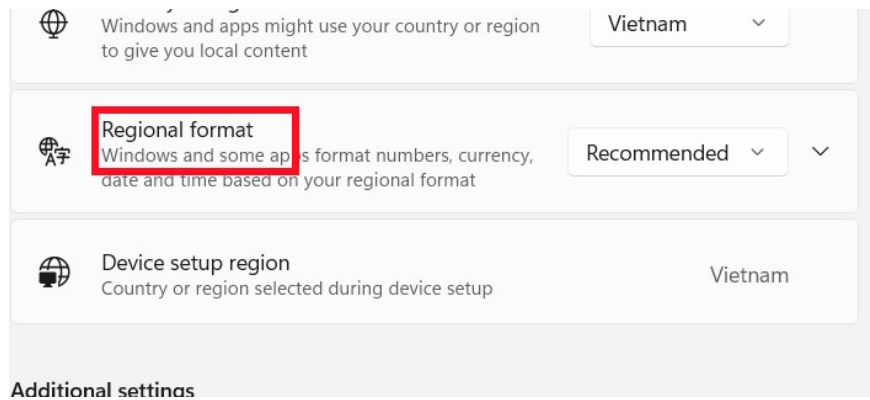
Step 1:

Open **Settings** on your computer, then click on **Time & Language** . Next, look to the side **and select Language & Region** .

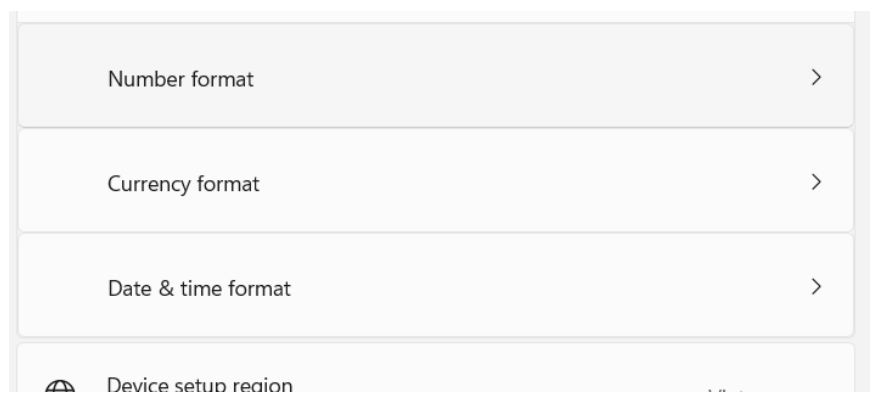


Step 2:

Look to the side and **select Regional Format** to adjust the formatting according to your region.

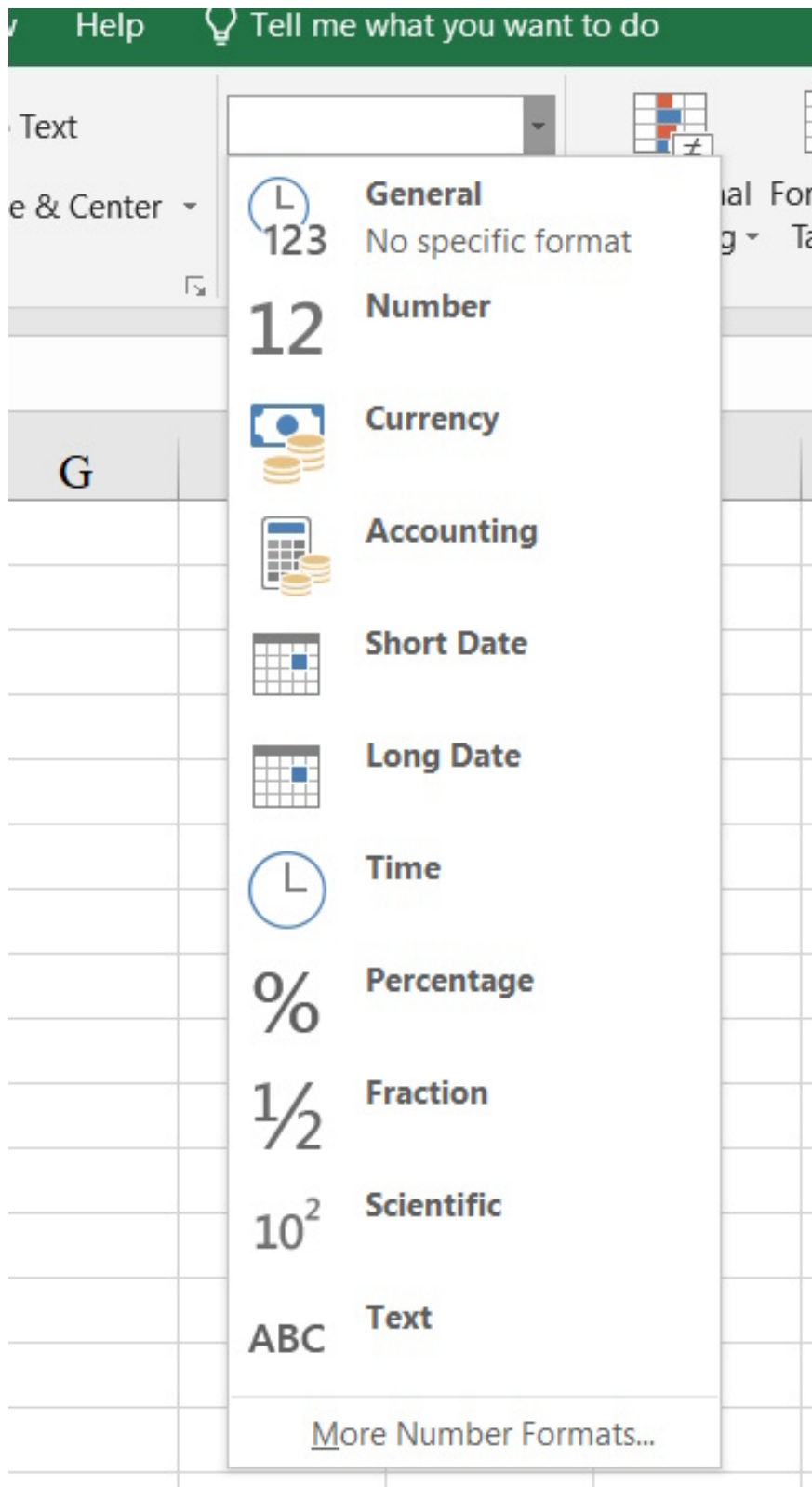


Now you **need to adjust the formatting for each piece of content** to comply with the data rules in your region.



Format Excel cells correctly

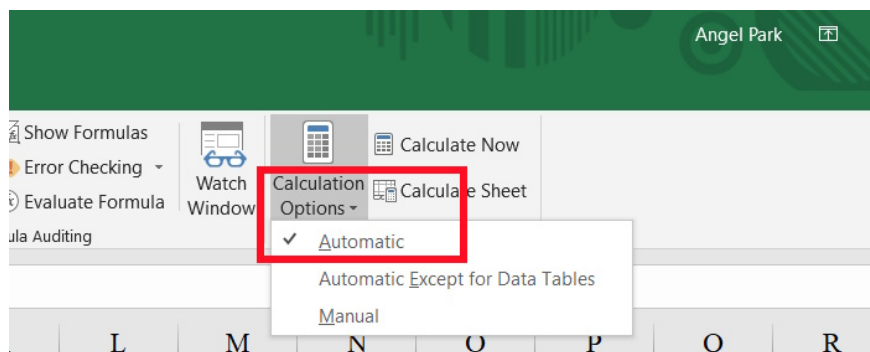
Incorrect unit formatting can cause Excel to fail to recognize functions. Therefore, please adjust the cell formatting to match the data.



Automatic calculation mode in Excel

If a function fails to calculate, the automatic calculation tool has been turned off. You can check this again using the instructions below.

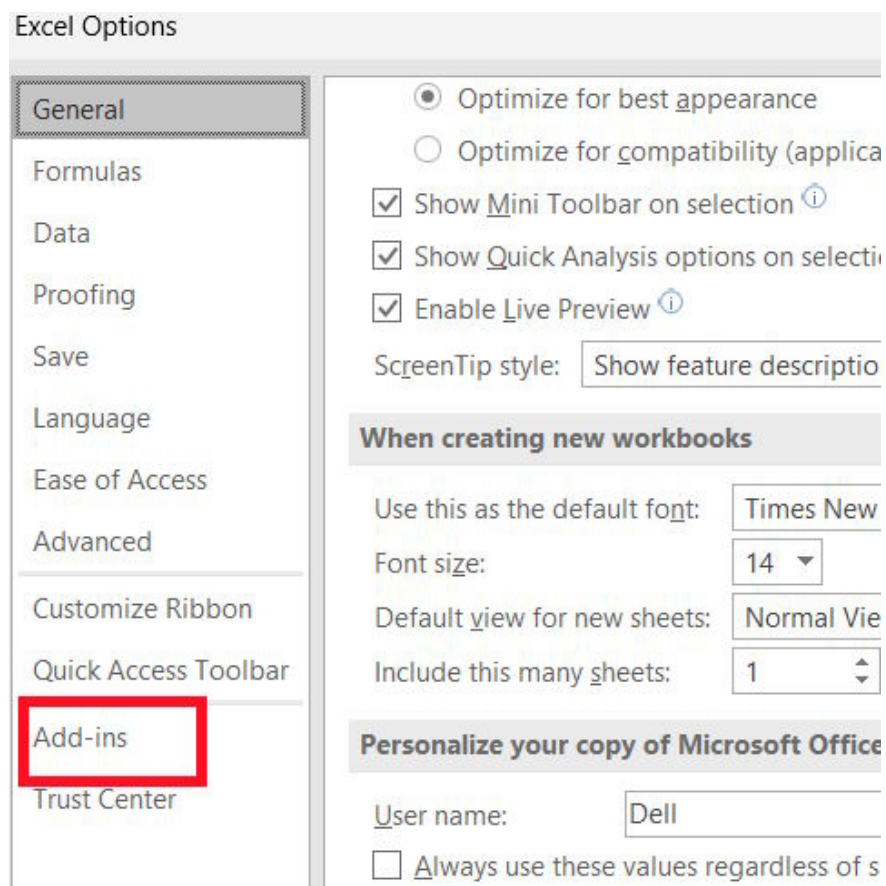
We click on **the Formulas tab** , then look down to **the Calculation Options section** and check if **the Automatic mode is enabled** .



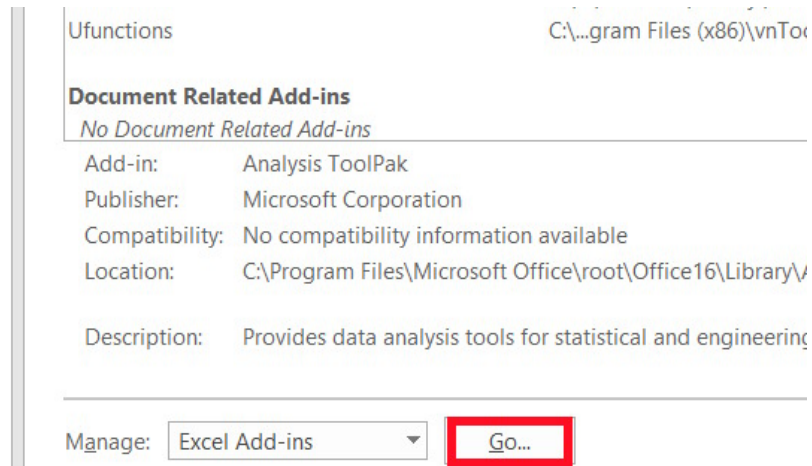
Check out the features in Excel.

If you are using additional function packages in Excel, such as Analysis ToolPak, you need to check if they are enabled.

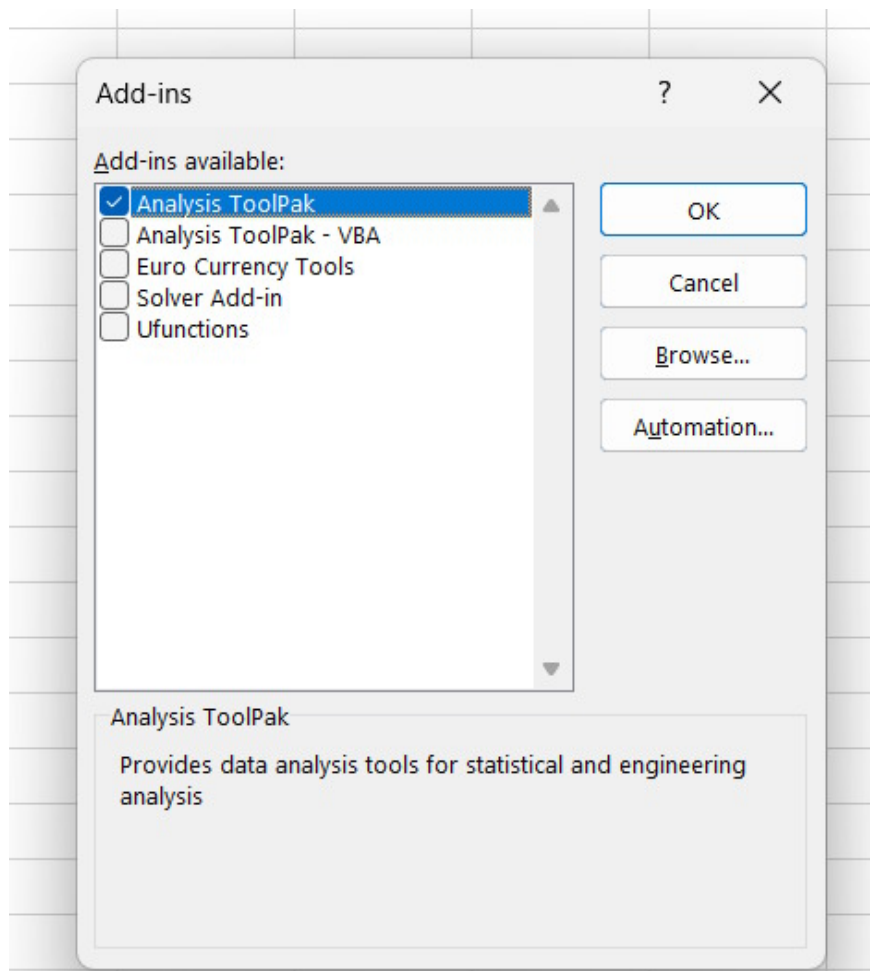
You **access Excel Options** and then **select Add-ins** to check the add-ins installed in Excel.



Next, we click on the **"Go"** option to view the list of add-ins currently installed in Excel.



Now, **check if the function utility is selected for use** . If not, select it to activate it and then click OK to save.



You finished reading the article "**Excel error: Function not recognized**" edited by the [TipsMake](#) team. We hope this article has provided you with many useful tech tips and tricks. You can search for similar articles on tips and guides. Thank you for reading and for following us regularly.

