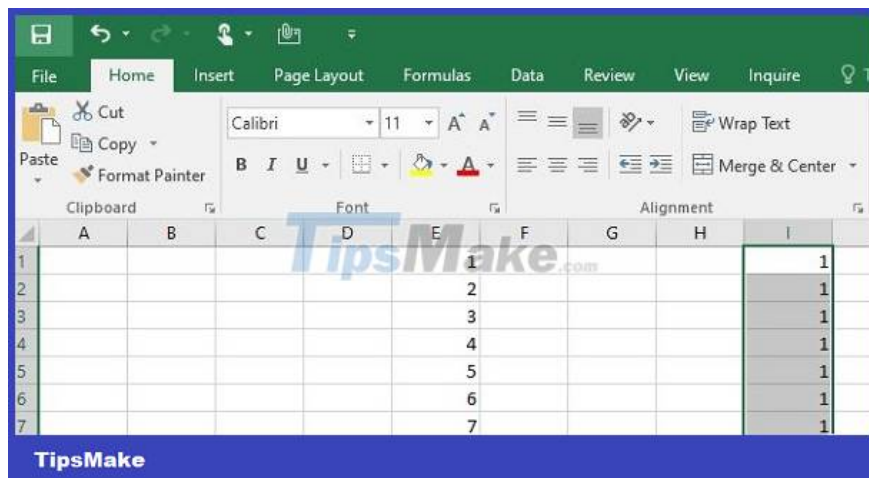
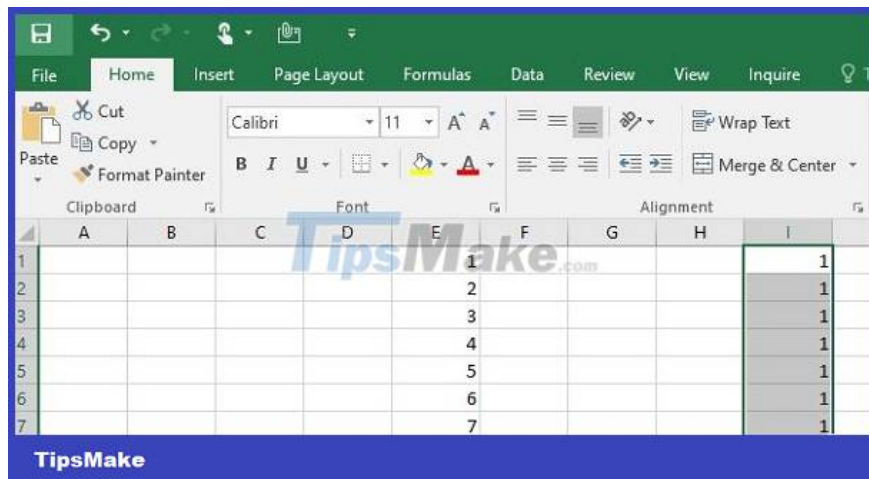


Error of not being able to pull serial numbers in Excel and super simple steps to fix the error

Hello! In today's office tips section, let's discuss the error of not being able to pull sequential numbers in Excel!

Hello! In today's office tips section, let's discuss the error of not being able to pull sequential numbers in Excel! If you are having trouble with this problem, TipsMake will reveal to you what to do to fix it.

When working with Excel, you may encounter a lot of trouble if you do not understand this tool well. Among them, the error of not being able to pull sequential numbers in Excel is also very common. Surely you will find it quite annoying if dragging and dropping is your numbering habit in Excel. Don't worry because with **TipsMake** , I will show you how to quickly fix **the error of not being able to pull serial numbers in Excel** .



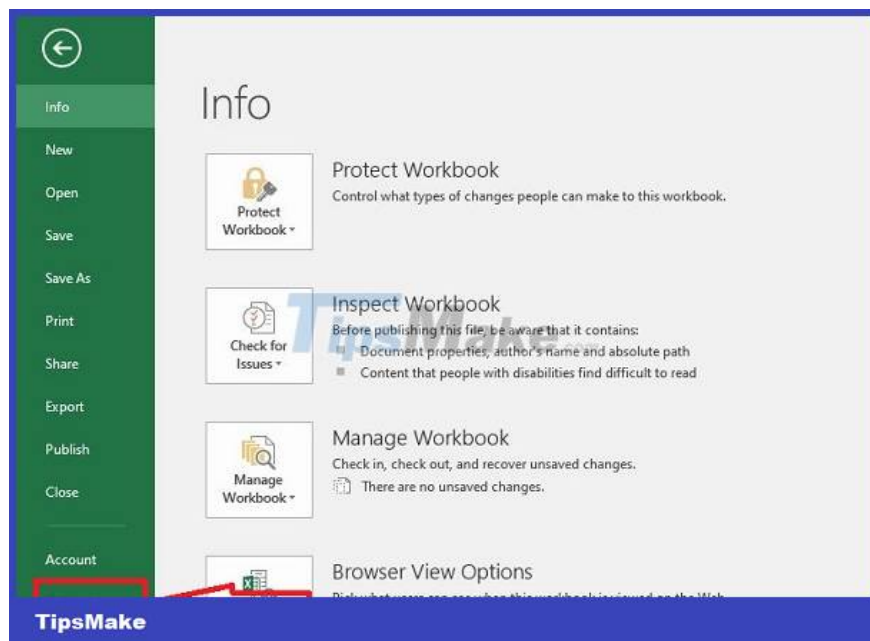
Share how to fix the error of not being able to pull serial numbers in Excel

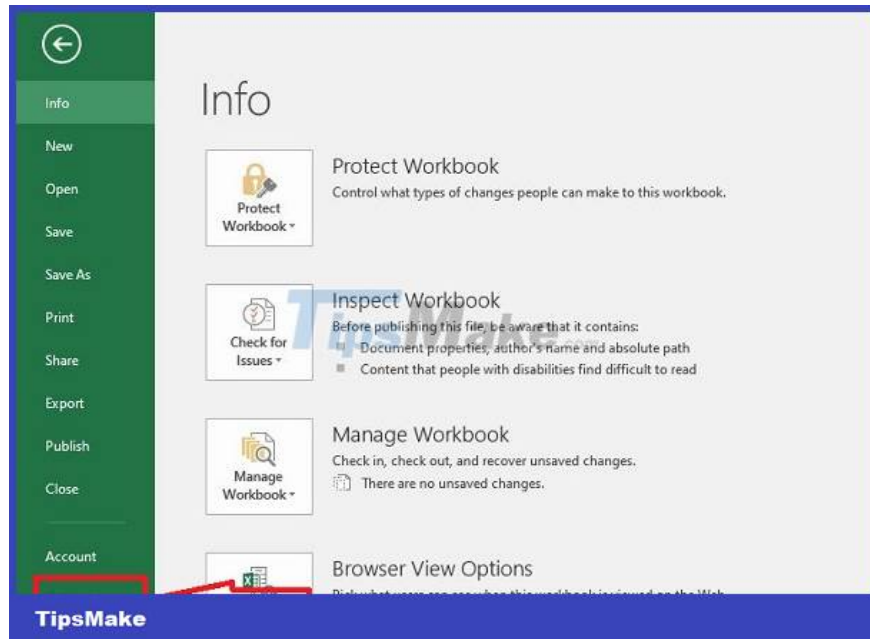
One of the fastest ways to number sequentially in Excel is drag and drop. But many people cannot do it or encounter the common situation of repeating sequential numbers in Excel. Admin will explain the cause and how to fix it right below.

Find out how to fix dragging numbers without skipping numbers in Excel

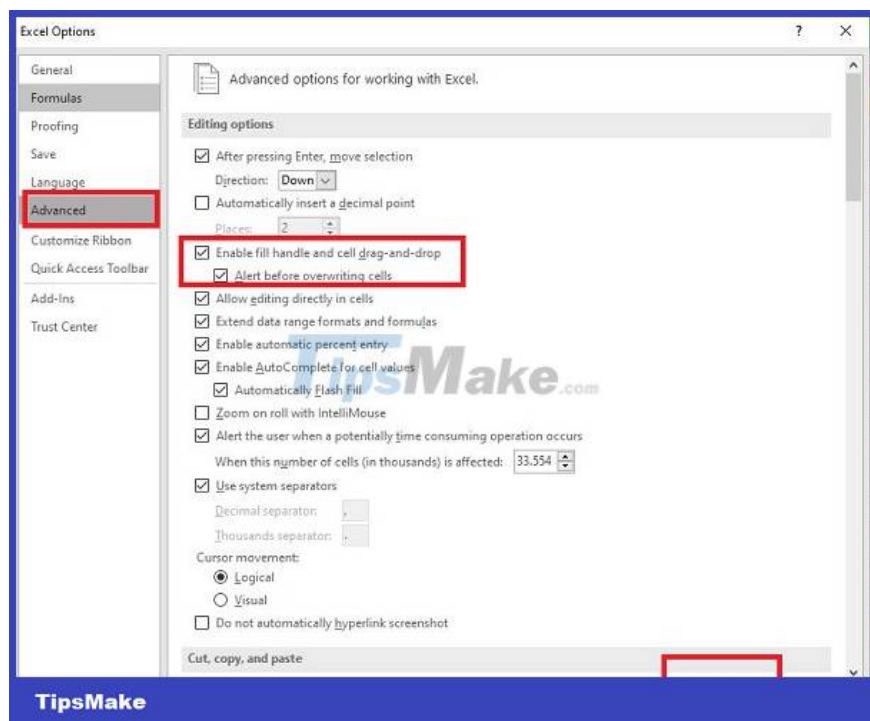
If you cannot drag and drop to number, there is a high possibility that the Fill Series in Excel is hidden so it cannot be done. To fix, users apply the following method to fix the error of not being able to fill series in Excel:

1. **Step 1** : In the error-prone Excel file, click the **File** tab > Select **Options** on the left menu.





1. **Step 2** : When the window displays, click on the **Advanced** option in the list on the left > Then, search and check the **Enable fill handle and cell drag-and-drop** box > Click **OK** to save.

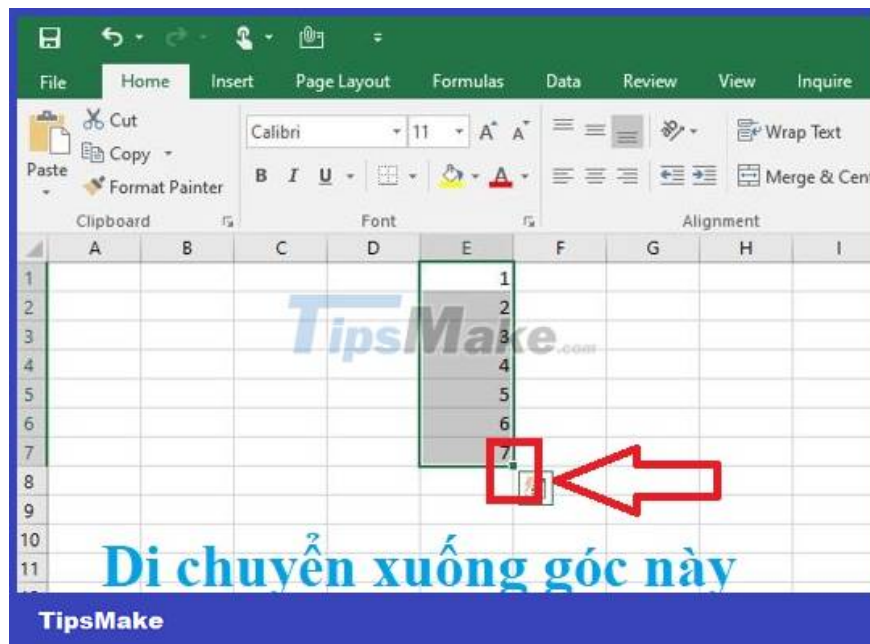
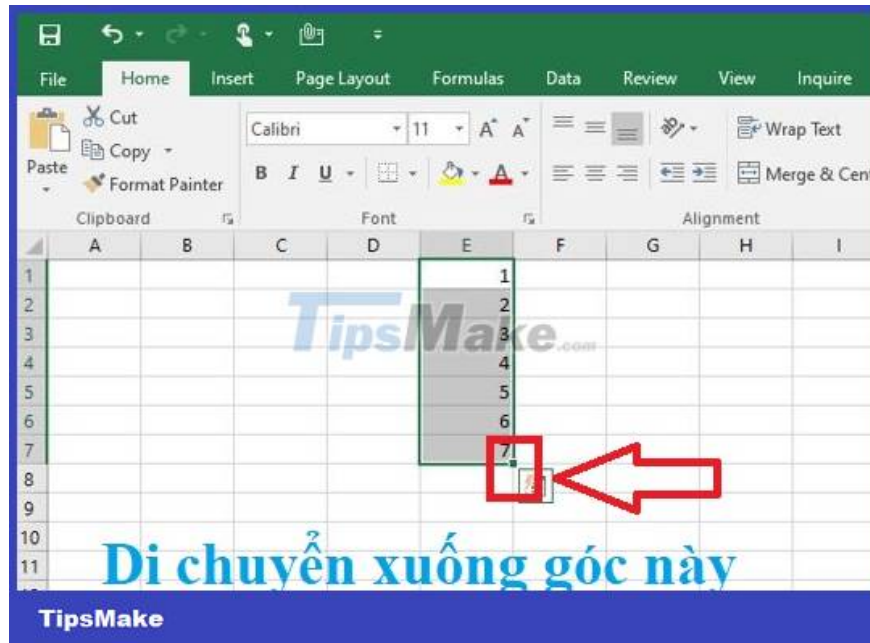


1. **Step 3** : After that, you will find yourself numbering as usual.

Instructions on how to number sequentially in Excel (mouse drag)

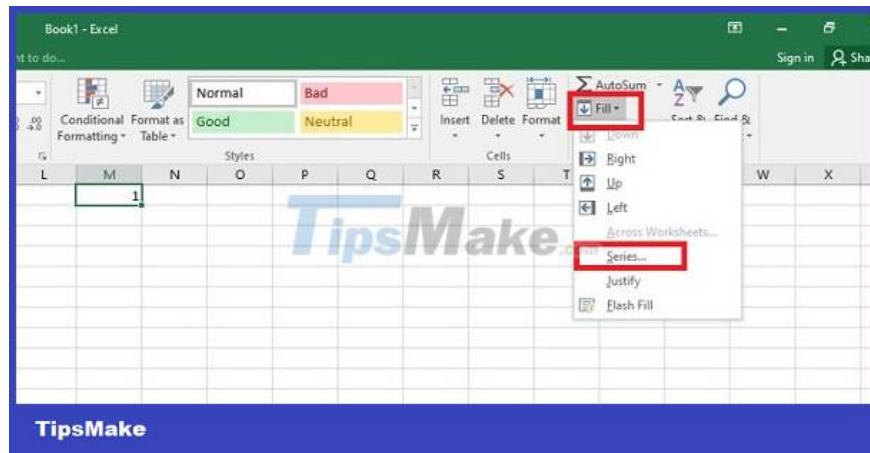
If you can't hit the numbers, it might be because you haven't done it properly. To number quickly by dragging and dropping the mouse. First, the user enters the serial number for the first 2 cells > Next, highlight (select) these 2 cells > Drag the mouse to the bottom right corner of that cell > When the black + sign appears on the

mouse , **press** Hold and drag down the next cells > When you release the cells, they will be numbered.

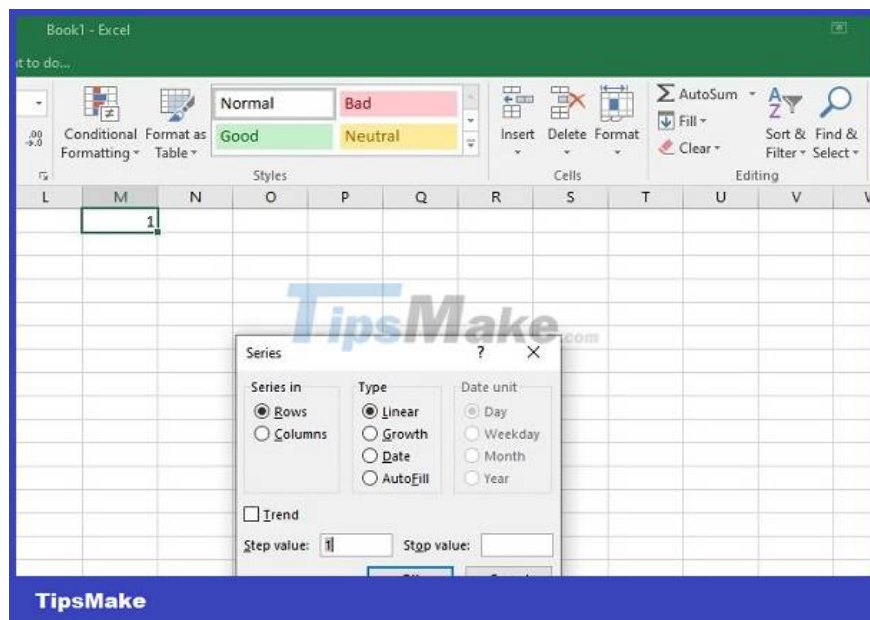


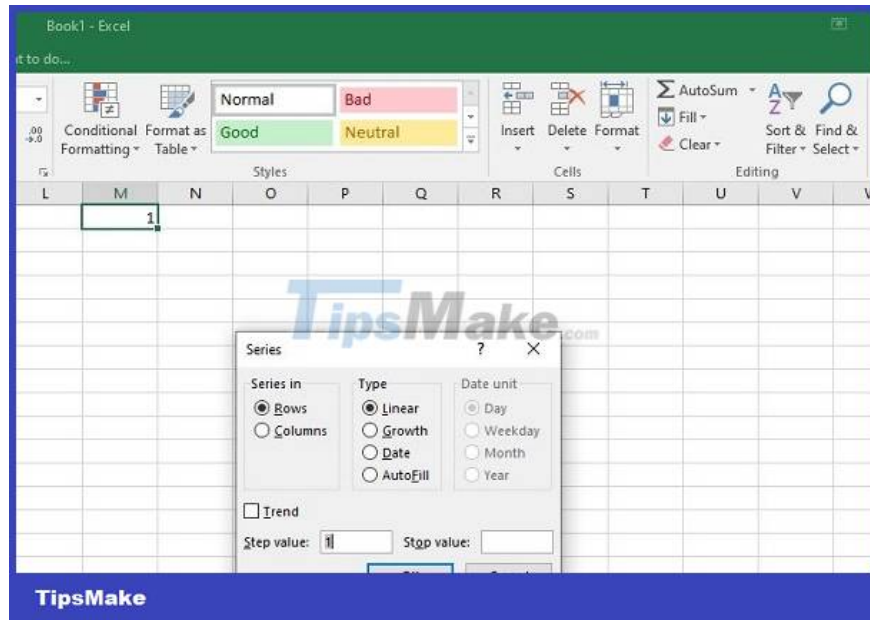
How to number sequentially with the Fill tool

With this method, first you number the first cell > Then, the user clicks on the arrow next to **Fill** on the toolbar > When the list displays, click **Series**.



In the next window, if you want to number in horizontal rows, click **Rows** > If you want to number in vertical columns, click **Columns** > Next, on the **Type** tab > Check **Linear** to number in order. gradually increase > Next, in the **Step value** box , enter the first number and in the **Stop value** box, enter the last number > Click **OK** to save and view the results.





TipsMake has shared how to fix the error of not being able to pull serial numbers in Excel. Not complicated at all, right? Admin wishes you success in overcoming it so that your work will be even smoother.

You finished reading the article "**Error of not being able to pull serial numbers in Excel and super simple steps to fix the error**" edited by the [TipsMake](#) team. We hope this article has provided you with many useful tech tips and tricks. You can search for similar articles on tips and guides. Thank you for reading and for following us regularly.