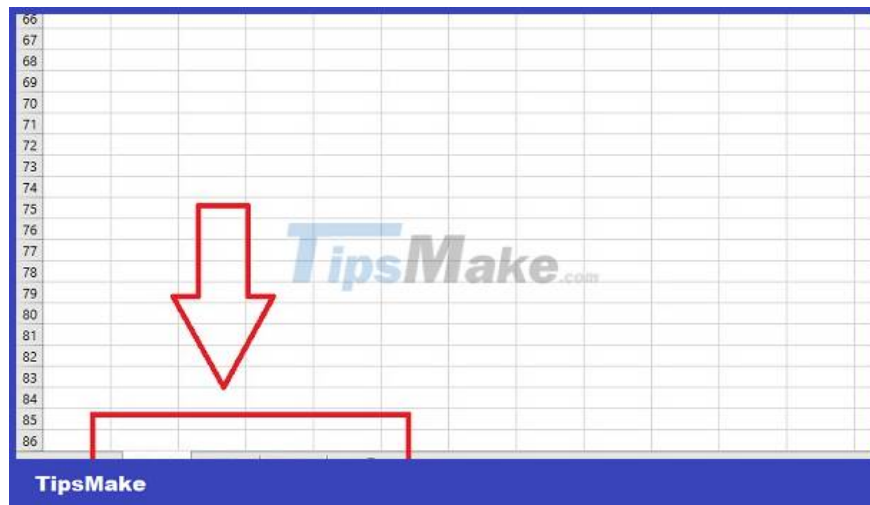


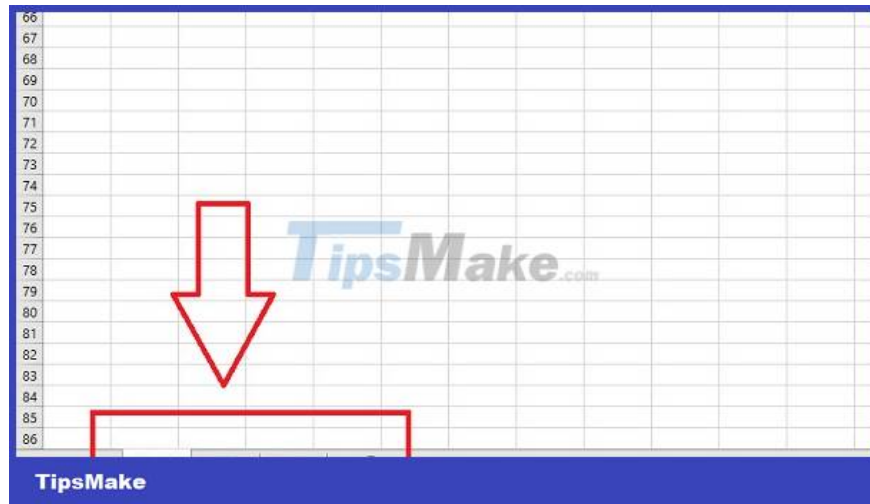
Error of not being able to add sheets in Excel, how to fix?

See now how to fix the error of not being able to add sheets in Excel shared by TipsMake to apply and fix this problem!

You cannot insert a new worksheet while working with Excel? See now how to fix the error of not being able to add sheets in Excel shared by TipsMake to find a quick solution!

On forums, many people have complained about not being able to add new sheets to workbooks when using Excel. The familiar plus sign on the sheet tab is gray, even the Home-Insert-Insert trick is gray so new sheets cannot be added. Don't worry, **TipsMake** has found a way to fix **the error of not being able to add sheets in Excel** effectively. Apply now to fix this error!





Details on how to quickly fix the error of not being able to add sheets in Excel

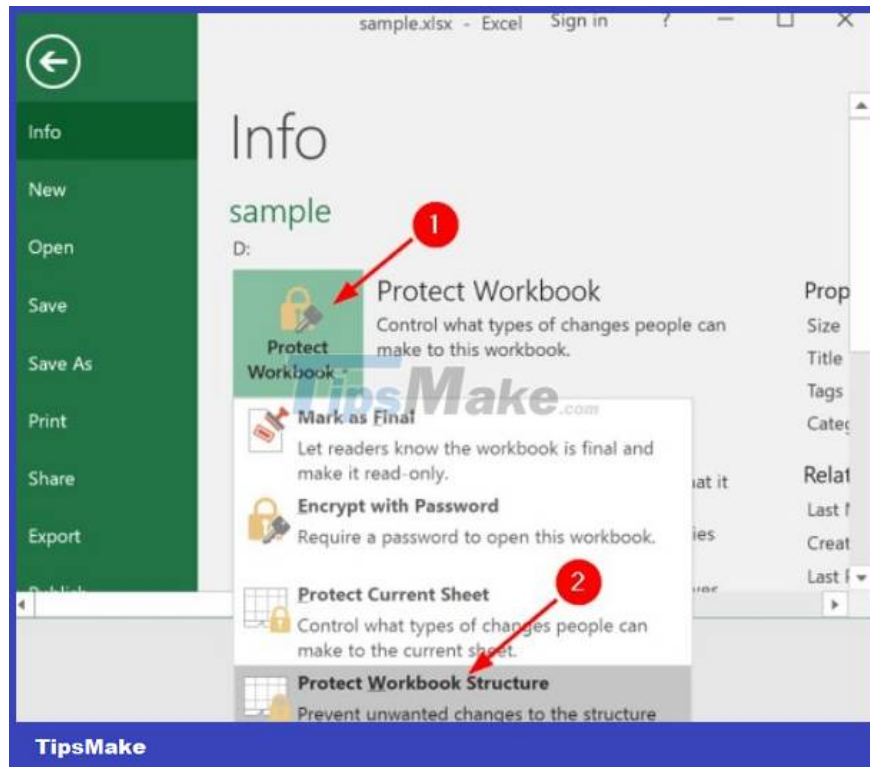
How to insert additional sheets in Excel is certainly not unfamiliar to users. You can quickly click the + sign near the sheet you are working on below. Or click the **Home tab > Insert > Insert Sheet** and you're done. But in this case both methods cannot be done. Surely you will be extremely confused and not knowing what to do.

The cause of this situation may be because the working window is being protected. Therefore, you cannot add/delete/move/rename/copy sheets. There's also a possibility that due to an issue with the add-in, the adding new sheet feature isn't working. Here are the steps you need to take to fix the error.

1/ Unprotect workbook structure in Excel

Excel allows users to enable structure protection of all sheets in a spreadsheet. That means you cannot arrange or add new sheets to this spreadsheet. Therefore, you need to turn off the protection feature to be able to add new sheets to Excel.

1. **Step 1** : In the Excel window you are working and want to add a new sheet but cannot> The user clicks on the **File** tab > Select **Info** at the top.
2. **Step 2** : Click the **Protect Workbook** button > Select the **Protect Workbook Structure** option > When the small dialog box displays, enter the password you set to protect previously > Click **OK** to complete this process.



NOTE:

In case you do not remember the password protection and cannot insert a sheet in Excel, you can fix it by doing the following:

1. **Step 1** : Install **Excel Password Recovery program** on your computer > Open this software and upload Excel with worksheet protection turned on but don't know the password.
2. **Step 2** : Tick **Remove Worksheet & Workbook Password** > Click **Next** .





1. **Step 3** : Wait a moment and then click **Go to folder** > So the Excel file has been unlocked and you can freely edit and add new sheets.





2/ Run Excel in safe mode

As the admin shared, the problem may originate from Excel add-ins. Therefore, press **Windows + R** > Enter the command **excel /safe** > Press **Enter** > After opening Excel in safe mode, try checking to see if you can add a new worksheet as usual.

If the problem cannot be resolved with the above tips, users should try clearing Office's hidden cache or repairing Office installation. These are quite effective solutions if the cause is because the Excel version is having problems and cannot add new sheets.

*Although **the error of not being able to add sheets in Excel** does not have too many solutions, in fact, many people have solved the problem right from method 1. Therefore, **TipsMake** hopes that you can also fix the error quickly.*

You finished reading the article "**Error of not being able to add sheets in Excel, how to fix?**" edited by the [TipsMake](#) team. We hope this article has provided you with many useful tech tips and tricks. You can search for similar articles on tips and guides. Thank you for reading and for following us regularly.