

# Error of laptop screen automatically turns off - Cause and fix

The article introduces some of the reasons and how to fix the error of the laptop screen turning itself off quickly and simply. Click to see details!

Sometimes when using a laptop, you will encounter the laptop screen will automatically turn off even though you did not perform any shutdown on the laptop. The following article will give some causes and how to fix this situation on Windows 10 laptop effectively. Stay tuned.

## 1. Plug in another power source

The first reason may be due to the low efficiency of the power supply you are using or the faulty power supply. Try unplugging the laptop and re-plugging it into other sources.



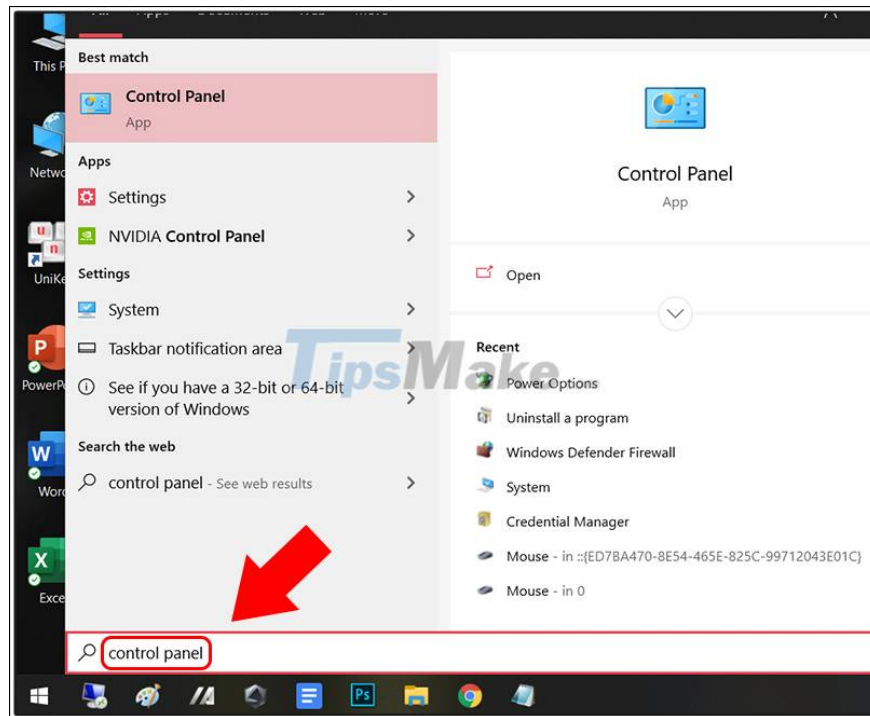
## 2. Turn off Fast Startup

Fast Startup is a mode that allows you to quickly restart your laptop after shutdown. However, this can also cause the device in use to turn off the screen suddenly.

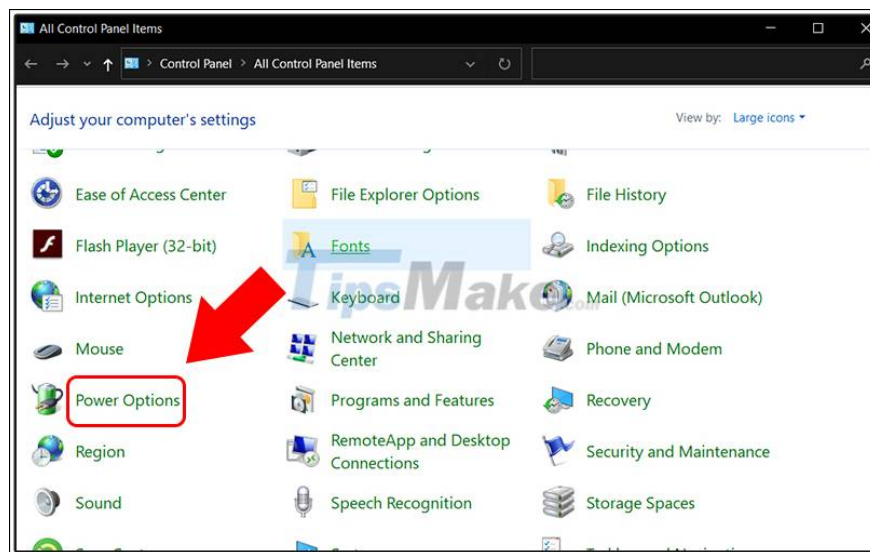
To check if this mode is on, do the following:

### - Step 1: Open Power Options

Press the **Windows** button on your keyboard or the **Start** button in the left corner of the screen > Type "**control panel**" > Press **Enter** to open the Control Panel.

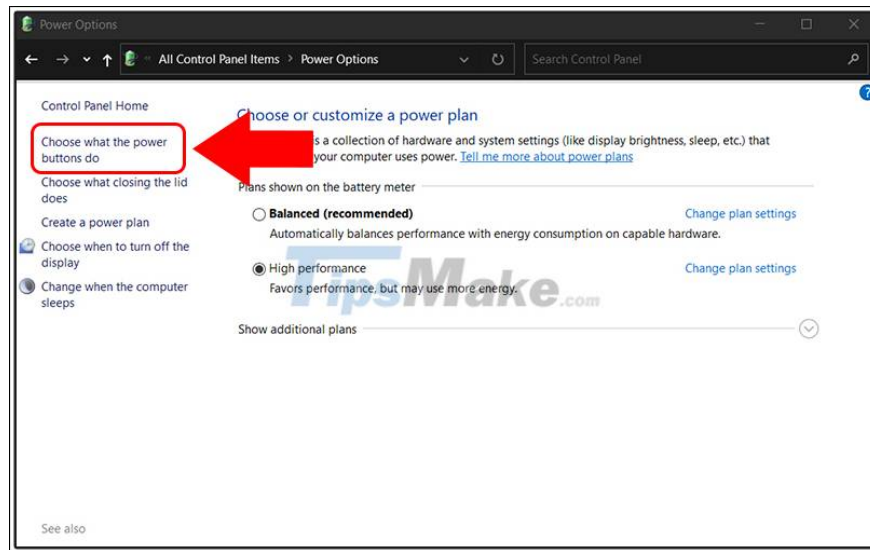


You choose **Power Options** .

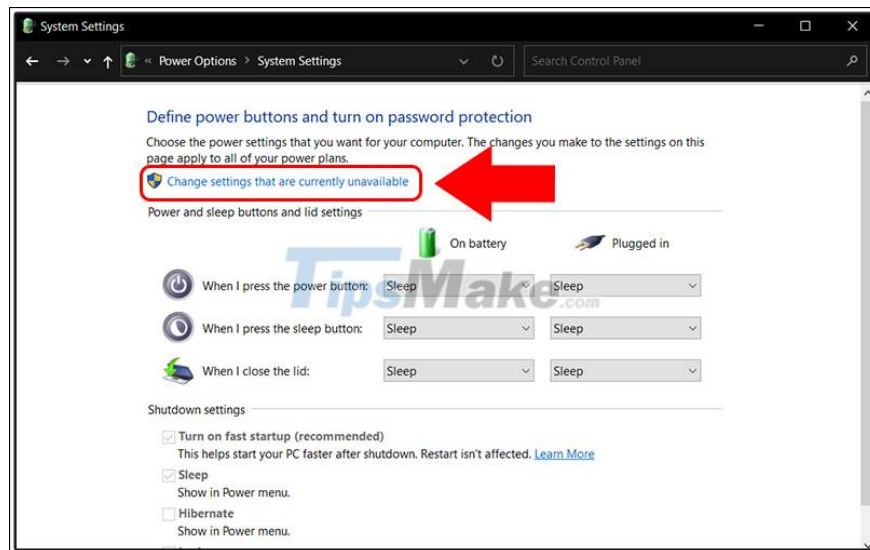


- **Step 2: Open Change Settings that are currently unavailable**

You select **Choose what the power buttons so** .



You choose **Change settings that are currently unavailable** .



### - Step 3: Turn off Fast Startup

Scroll down to **Shutdown settings** > Uncheck the **Turn on fast startup box** > Click **Save changes** .



### 3. Check the laptop's temperature

In newer laptops there will be an automatic shutdown mode when the temperature of the machine exceeds the allowable level. If your laptop has a cooling fan, you should turn it on to reduce the temperature. In addition, you can also turn off the machine to give it a little rest to lower the temperature.



?

### 4. Update the drivers of the machine

Maybe the drivers on the old machine make the operation not smooth, you should check the drivers to see if they are up to date. If not, you should update immediately.

In case you do not know how to update the driver, please refer to the following article for more details.

Above are the causes as well as how to fix the error when the laptop screen suddenly turns off. Thank you for watching and see you in the following articles.

You finished reading the article "**Error of laptop screen automatically turns off - Cause and fix**" edited by the [TipsMake](#) team. We hope this article has provided you with many useful tech tips and tricks. You can search for similar articles on tips and guides. Thank you for reading and for following us regularly.

