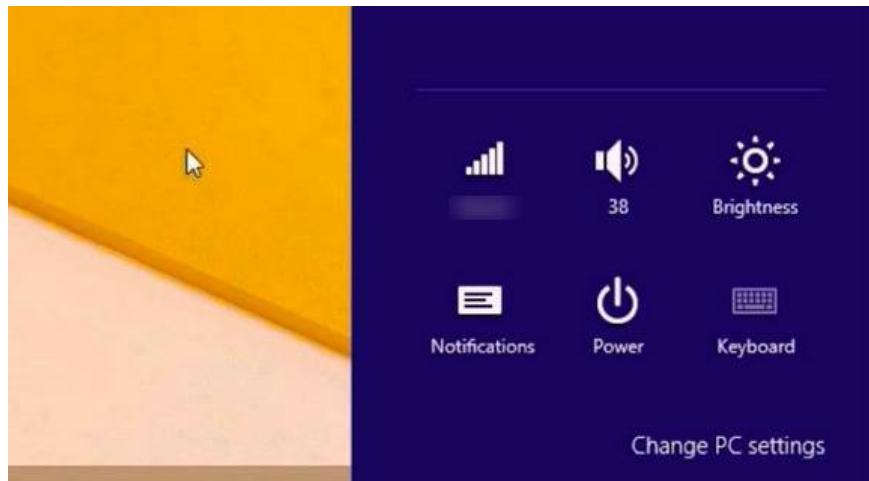


Error not adjusting screen brightness after upgrading Windows 8.1

After upgrading to Windows 8.1, many users encounter errors that cannot adjust screen brightness. Although every method has been applied to fix the error, it still fails. So how to fix this error, please refer to the following article of Network Administrator.

After upgrading to Windows 8.1, many users encounter errors that cannot adjust screen brightness. Although all methods have been applied, open Settings and Power Options to fix the error but still fail.

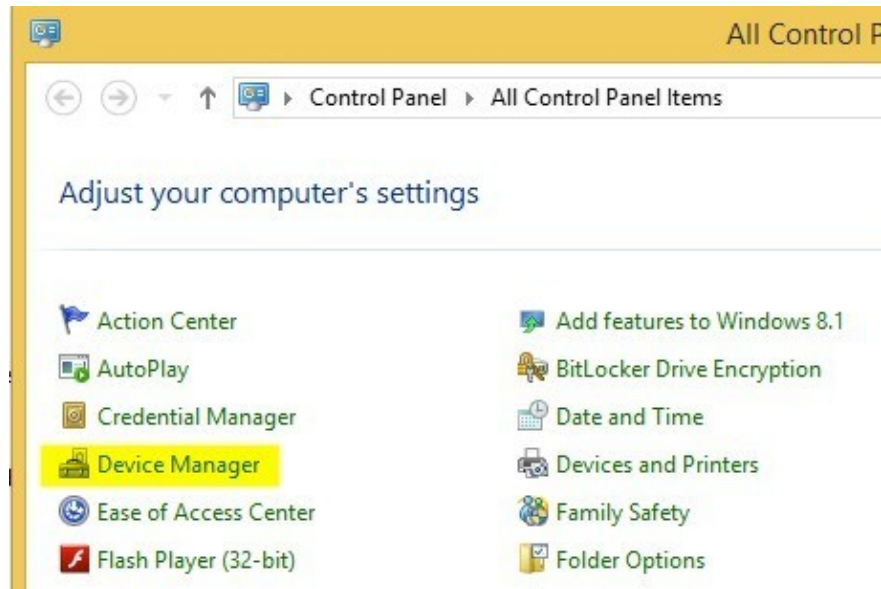
So how to fix this error, please refer to the following article of Network Administrator.



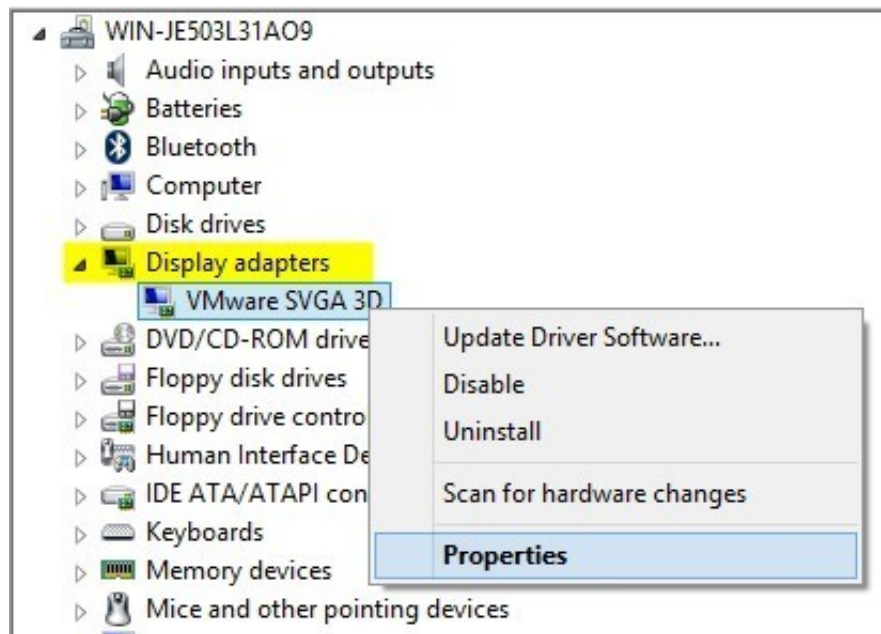
Fix the error of not adjusting screen brightness after upgrading Windows 8.1

To fix the error of not adjusting the screen brightness after upgrading Windows 8.1, follow the steps below:

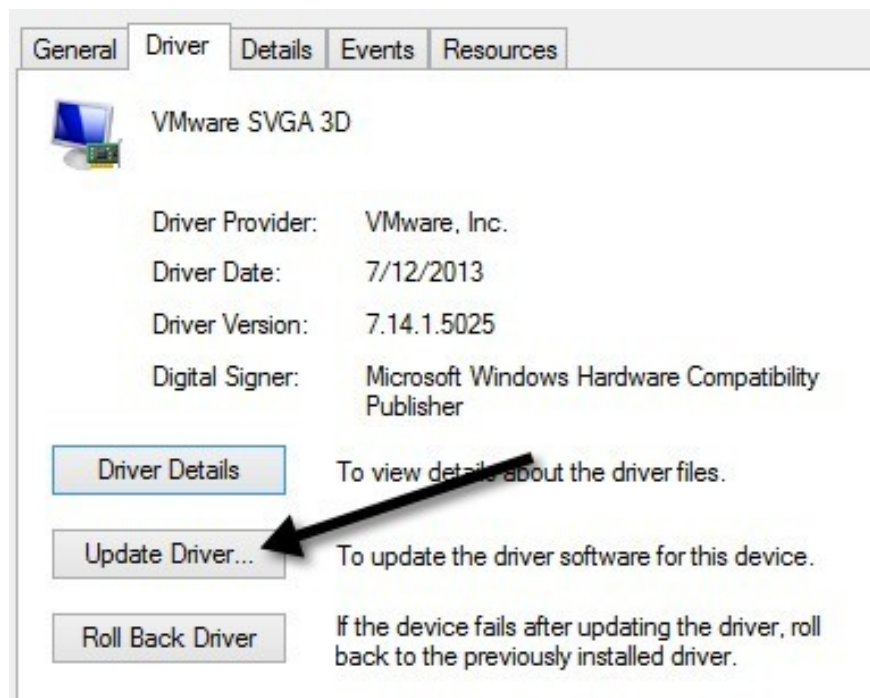
First open **Control Panel** , then on the Control Panel window, find and click **Device Manager** .



Next on the Device Manager window, expand the option called **Display Adapters** , then right-click the graphics card that you install on the system, select **Properties** . Suppose if you have an Intel HD Graphics 4000 graphics card, right-click it and select Properties.



Now a new window appears on the screen, where you click the **Driver** tab , then click the **Update driver** button.



You will have 2 options: **Search automatically for updated driver software** and **Browse my computer for driver software**. Your task is to select the option **Browse my computer for driver software**.

How do you want to search for driver software?

- Search automatically for updated driver software
Windows will search your computer and the Internet for the latest driver software for your device, unless you've disabled this feature in your device installation settings.
- Browse my computer for driver software
Locate and install driver software manually.

On the screen, the window **Browse for driver software on your computer** appears, here you click the **Select me pick from a list of device drivers on my computer** at the bottom of the window.

Browse for driver software on your computer

Search for driver software in this location:

Include subfolders

 [Let me pick from a list of device drivers on my computer](#)
This list will show installed driver software compatible with the device, and all driver software in the same category as the device.




Now is the step to select the graphics card drivers. You can choose the driver you want, but the most secure one is **Microsoft Basic Display Adapter**.

Select the device driver you want to install for this hardware.



Select the manufacturer and model of your hardware device and then click Next. If you have a driver on a disk that contains the driver you want to install, click Have Disk.

Show compatible hardware

Model
 Microsoft Basic Display Adapter 
 VMware SVGA 3D

Depending on your system, you will see many drivers displayed on the window, even with a driver installed multiple times. However, you can only use the original driver to adjust the screen brightness.

Refer to some of the following articles:

1. Here's how to uninstall Windows 10 to return to using Windows 7 or 8.1
1. How to fix "An operating system not found" error on Windows 10 and Windows 8.1
1. How to disable Lock Screen lock screen on Windows 8, 10

Good luck!

You finished reading the article "**Error not adjusting screen brightness after upgrading Windows 8.1**" edited by the [TipsMake](#) team. We hope this article has provided you with many useful tech tips and tricks. You can search for similar articles on tips and guides. Thank you for reading and for following us regularly.
