

Error file explorer.exe on Windows 10 - Causes and fixes

Guide to learn about the causes, signs, as well as 6 ways to fix explorer.exe error on Windows 10 quickly and effectively. Click to see now!

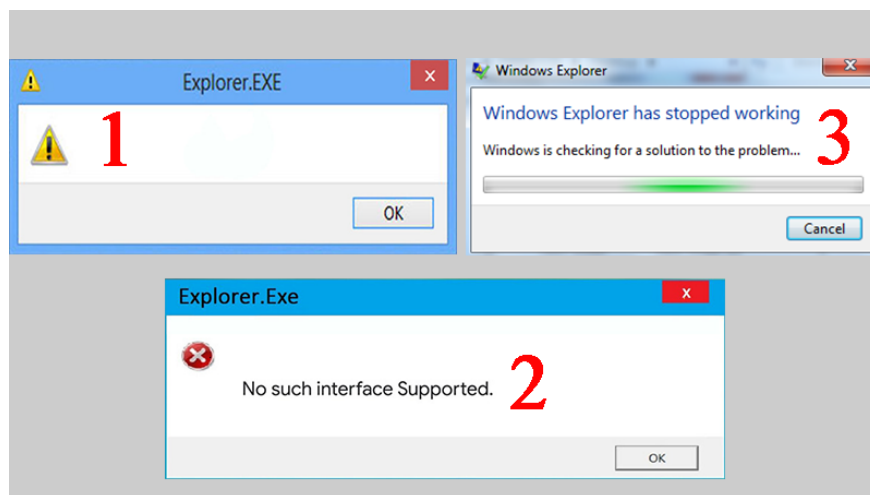
You are experiencing the error explorer.exe when starting your computer but do not know how to fix it. Do not worry, the article below will help you learn about the causes as well as how to fix explorer.exe error on Windows 10 fastest. Stay tuned!

1. The cause of file explorer.exe error on Windows 10

1. A program or file has not been completely deleted from the system.
2. Maybe partly because the virus deleted.
3. Deleting applications but not thoroughly leads to software / applications that you delete not being completely removed, they leave junk files in the Registry, they do not launch and gradually lead to file explorer error. exe.

2. Identifying signs of file explorer.exe error on Windows 10

1. When the power is turned on, a window with a yellow exclamation mark appears with the words Explorer.exe.
2. Line Explorer.exe but add the text No such interface supported.
3. Windows Explorer stops unexpectedly while in use.

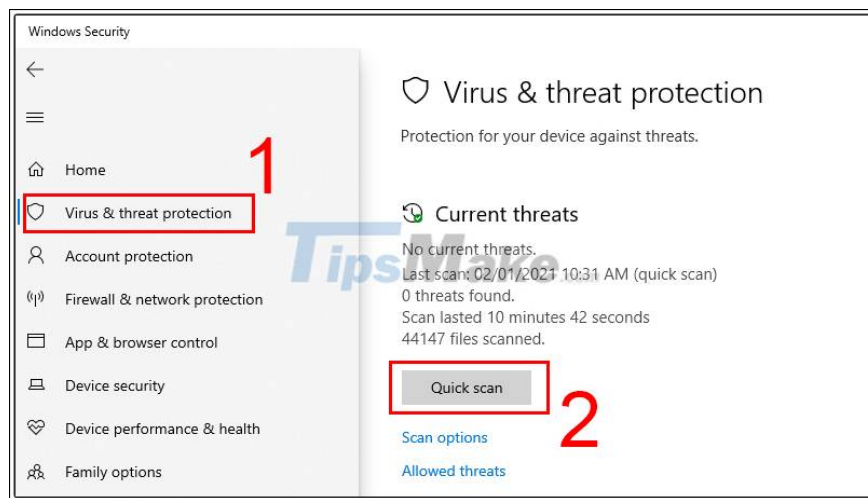


3. How to fix file explorer.exe error on Windows 10

Method 1: Remove virus by Windows Defender

Step 1: Press the Windows + S key combination> Enter Windows Security> Press Enter to access.

Step 2: Select the tab Virus & threat protection> Quick scan.

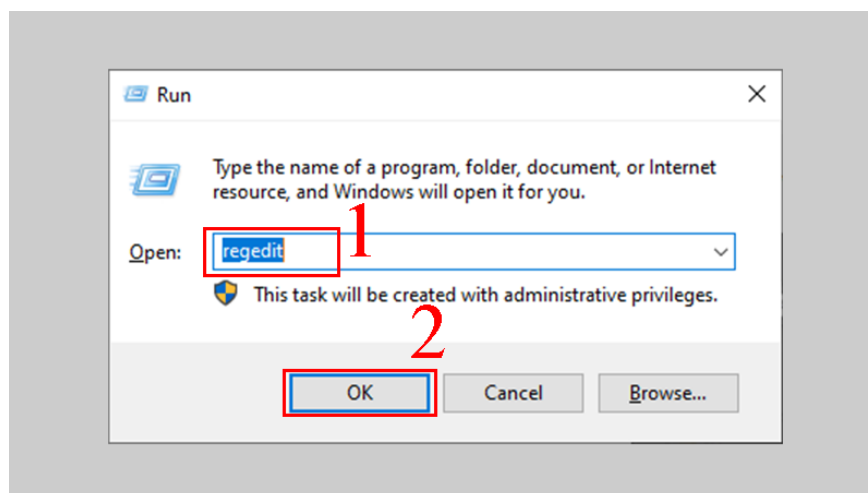


Step 3: Wait for the process to finish running, check if there are any dangers, delete and restart the machine.

Method 2: Delete the Load file in Registry Editor

Note: Not all computers have this Load file. Therefore, if there is a Load file, please delete it, but can not skip method 2.

Step 1: Press the Windows + R key combination> Enter regedit> OK.

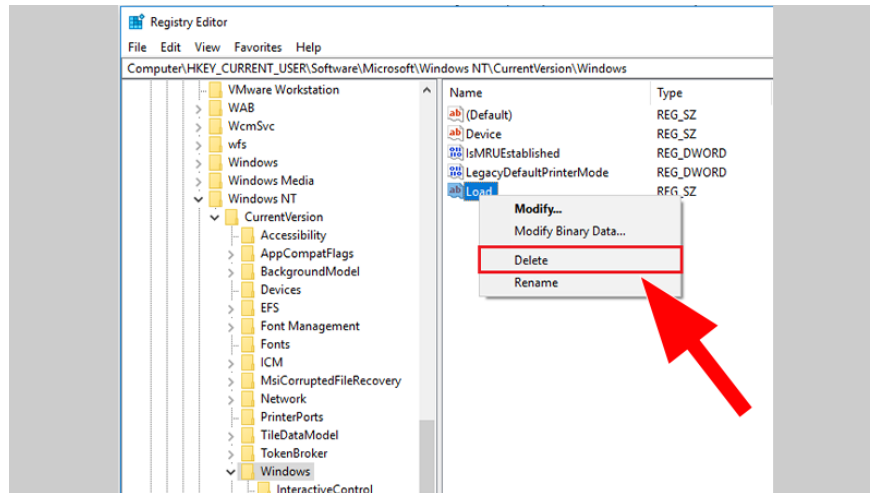


Step 2: A new window appears, enter the order following this path

HKEY_CURRENT_USERSoftwareMicrosoftWindows NTCurrentVersionWindows

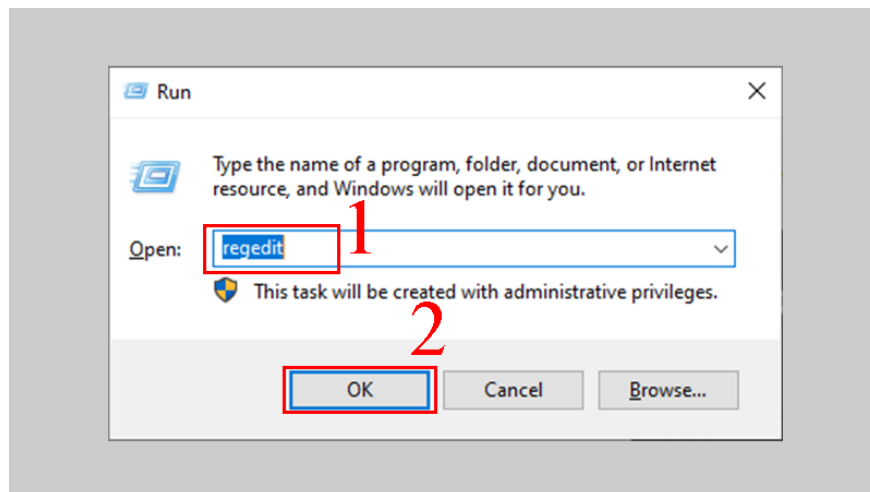
Or copy the above link and paste it in the search bar> Press Enter to access.

Step 3: Look to the right, navigate to the Load file (if any)> Right-click and choose Delete.



Method 3: Edit the value of the Winlogon file in Registry Editor

Step 1: Press the Windows + R key combination> Enter regedit> OK.

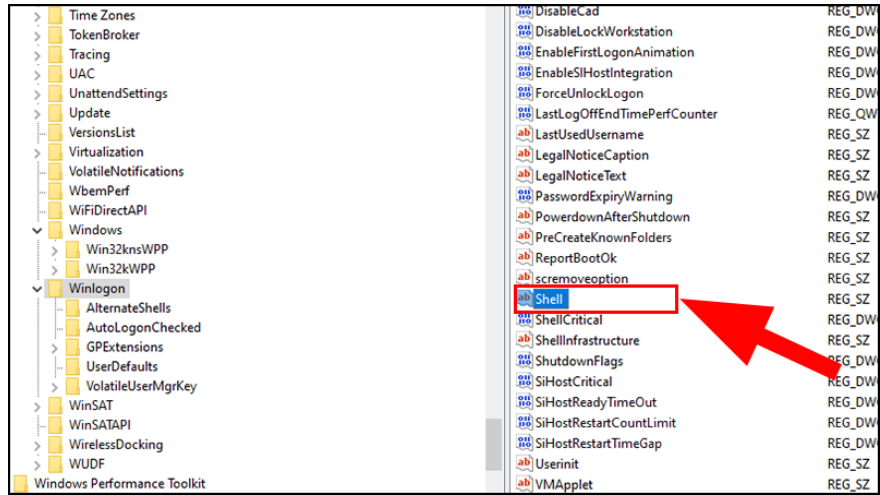


Step 2: A new window appears, enter the order following this path

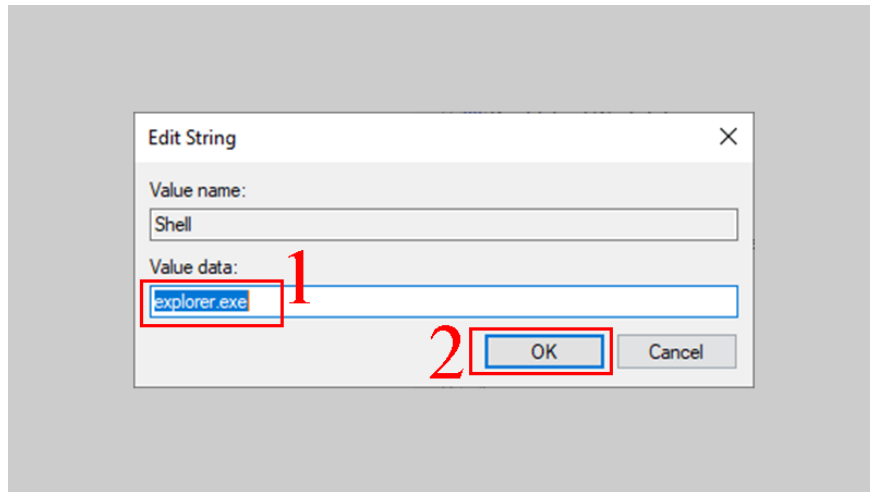
Computer\HKEY_LOCAL_MACHINE\SOFTWARE\Microsoft\Windows NT\CurrentVersion\Winlogon

Or copy the above link and paste it in the search bar> Press Enter to access.

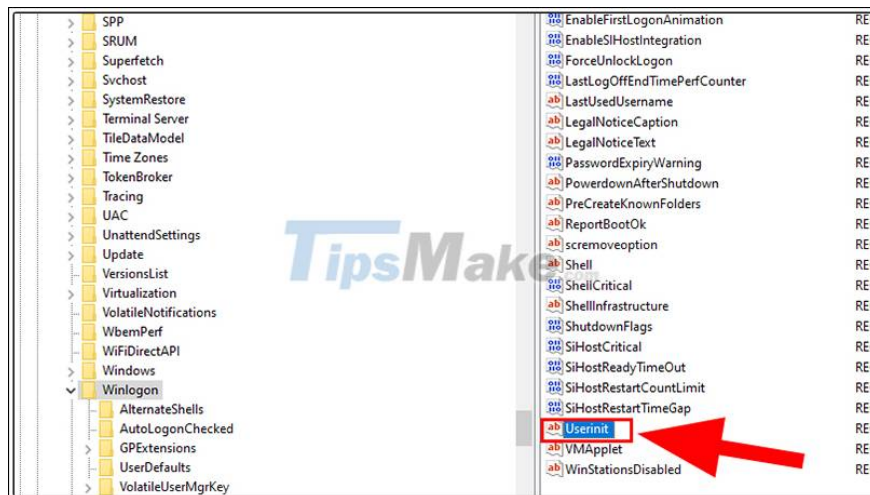
Step 3: In the right window, double-click the Shell key.



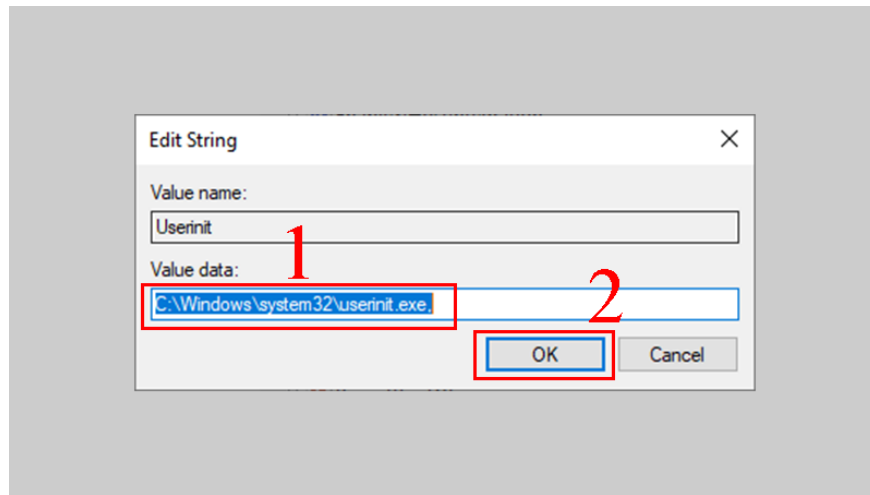
Step 4: Enter explorer.exe into the box Value data > OK.



Step 5: Scroll down to find and double-click Userinit.



Step 6: Enter "C: windows system 32 userinit. Exe".



Step 7: Restart the computer.

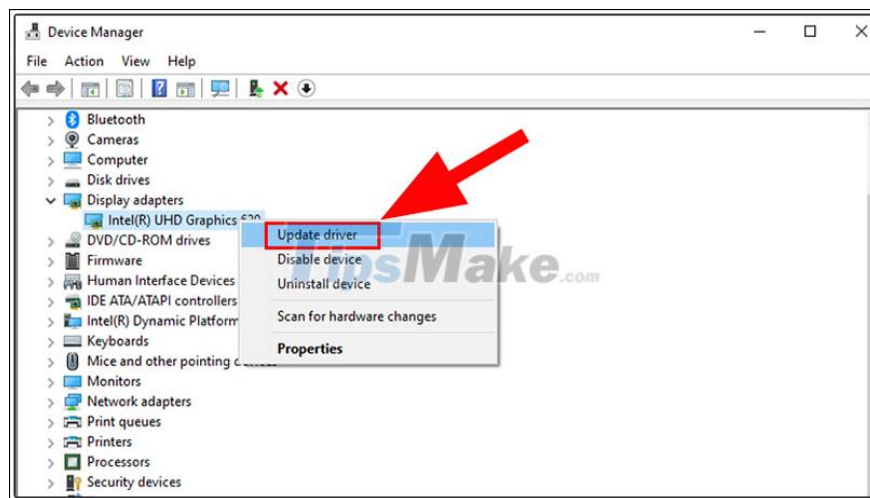
Method 4: Update the graphics card driver for the computer

Graphics card drivers encounter errors that conflict with your system may cause file explorer.exe error, try updating graphics card driver to the latest patch.

Step 1: Press the Windows + S key combination > Enter Device Manager > Press Enter to access.

Step 2: Double click on Display adapters.

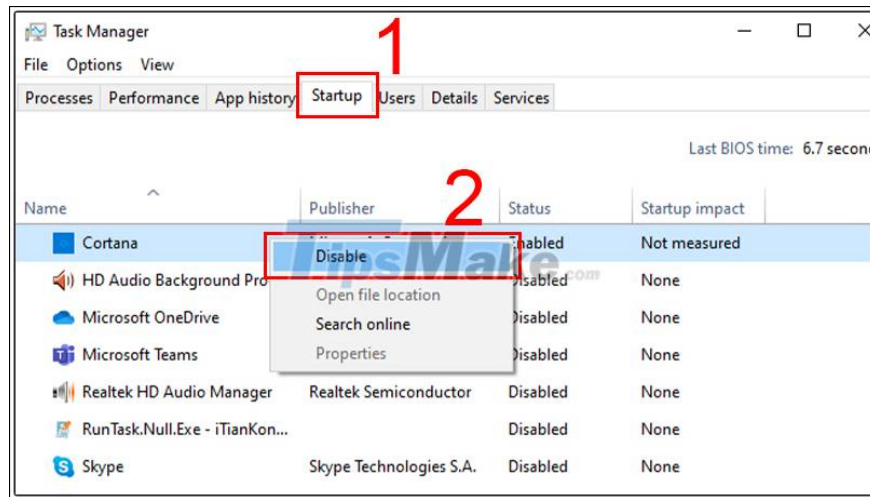
Step 3: Right-click on the name of your graphics card driver, and select Update driver.



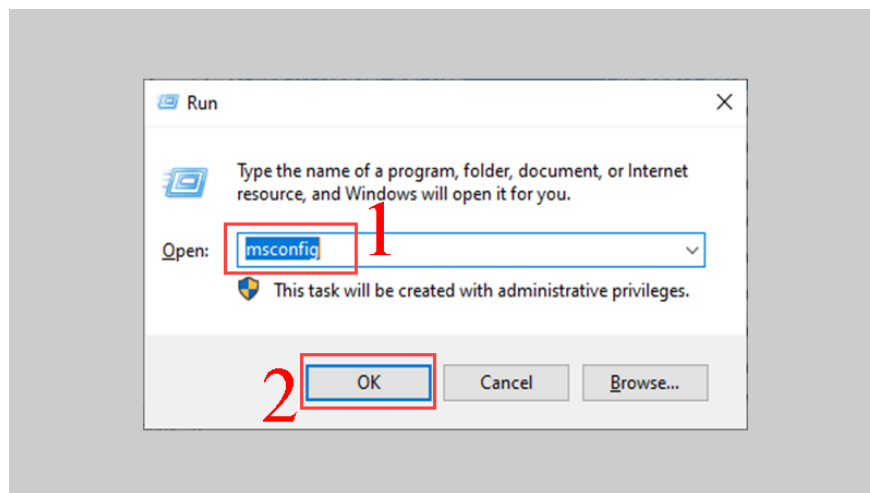
Method 5: Disable applications that start with Windows

Step 1: Open Task Manager by using Ctrl + Shift + Esc.

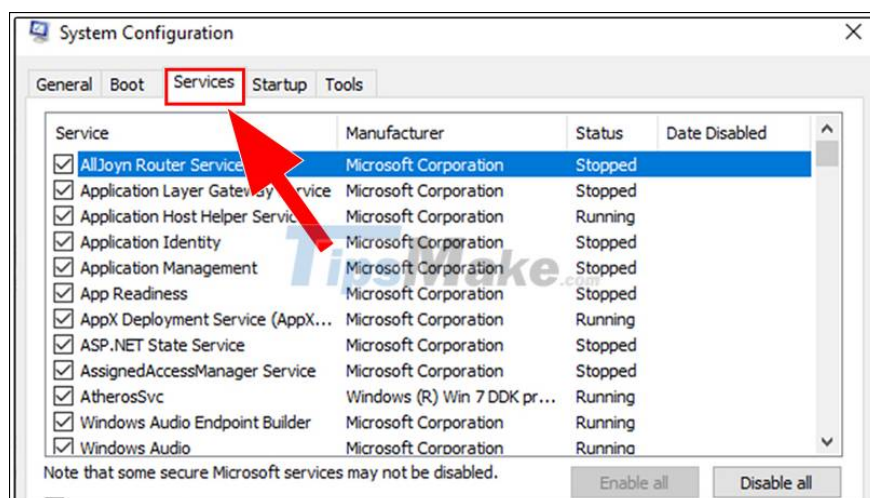
Step 2: Select the Startup tab > Disable unnecessary windows startup applications.



Step 3: Then disable unnecessary or newly added services. Using the Windows + R key combination type in msconfig> OK.



Step 4: In the Services tab, turn off unnecessary services.

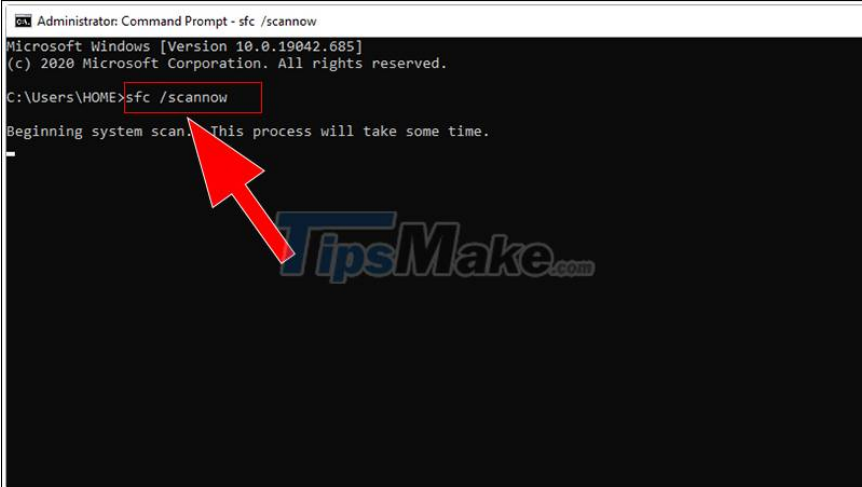


- Method 6: Run the SFC command

To fix Windows Explorer that keeps restarting and hanging, run the SFC command.

Step 1: Type cmd into the Start menu, then right-click on it > Run as Administrator.

Step 2: Type sfc / scannow into the Command Prompt window > Press Enter and wait until the process is completed.



```
Administrator: Command Prompt - sfc /scannow
Microsoft Windows [Version 10.0.19042.685]
(c) 2020 Microsoft Corporation. All rights reserved.

C:\Users\HOME>sfc /scannow
Beginning system scan. This process will take some time.
```

?

Hopefully the above article helps you understand the causes, signs and 6 easiest ways to fix explorer.exe error on Windows 10. I wish you all success!

You finished reading the article "**Error file explorer.exe on Windows 10 - Causes and fixes**" edited by the [TipsMake](#) team. We hope this article has provided you with many useful tech tips and tricks. You can search for similar articles on tips and guides. Thank you for reading and for following us regularly.