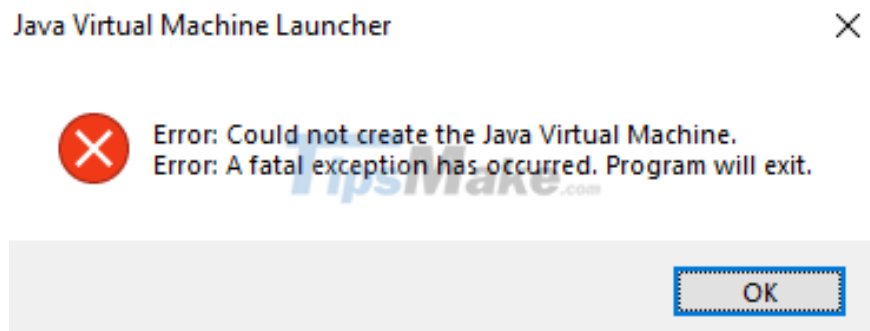


# Error Could not create the Java Virtual Machine when running Minecraft

How to fix Could not create the Java Virtual Machine error on Windows? Instructions to fix Error: A fatalexception has occurred. Program will exit.

Have you ever encountered an error message like this? (this error occurs when I run the game Minecraft).

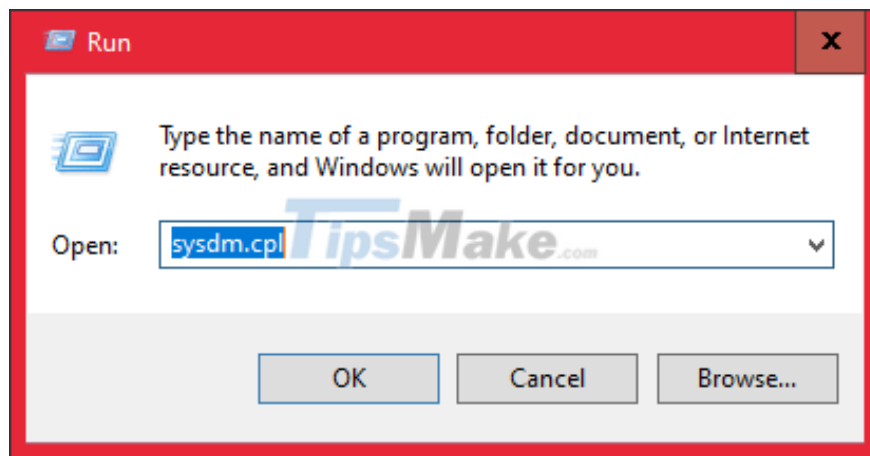
Error: Could not create the Java Virtual Machine.  
Error: A fatalexception has occurred. Program will exit.



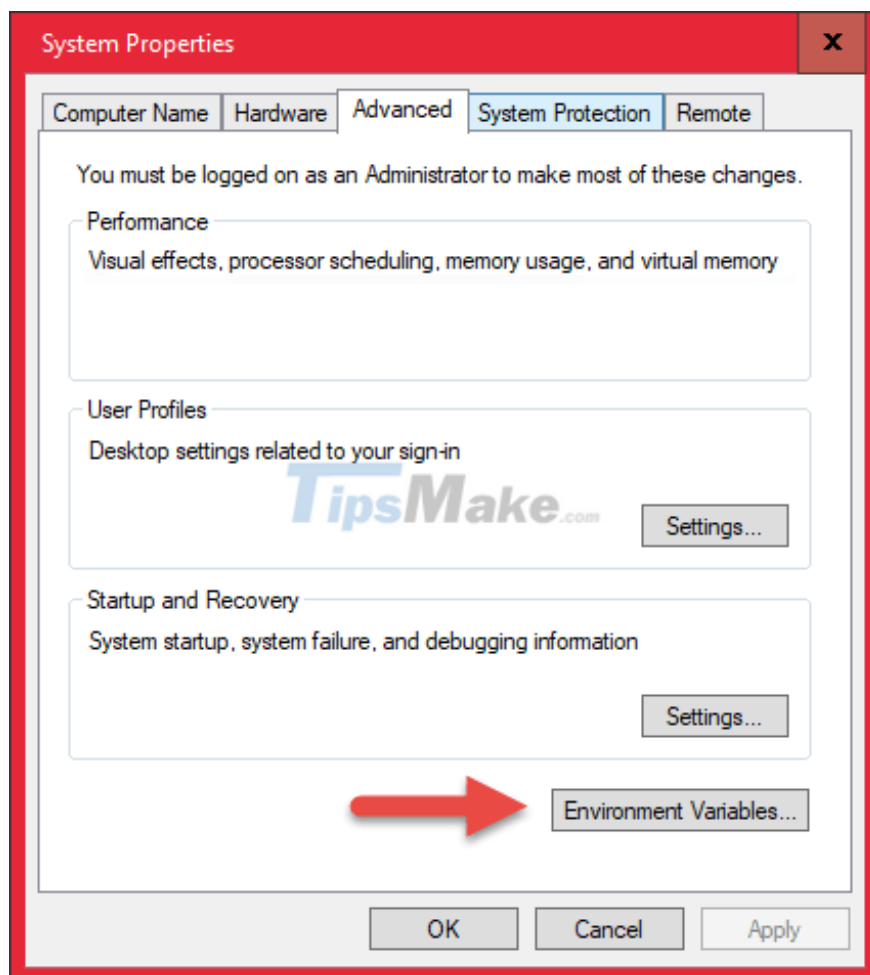
I think this error must have been many of you. That's why today I will show you how to fix this error in the most effective way.

## 1. Create a System Variable for Java

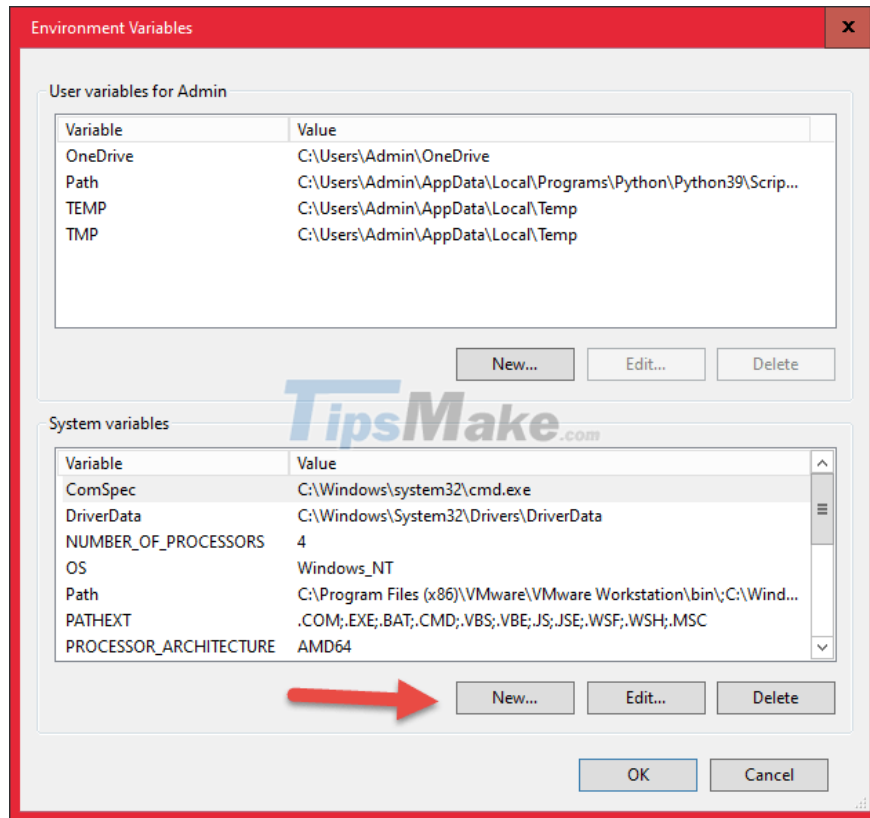
First, press the Windows + R key combination to open the Run dialog box => then enter sysdm.cpl => and click OK.



Next, go to the Advanced tab => and click on Environment Variables in the Startup and Recovery section.



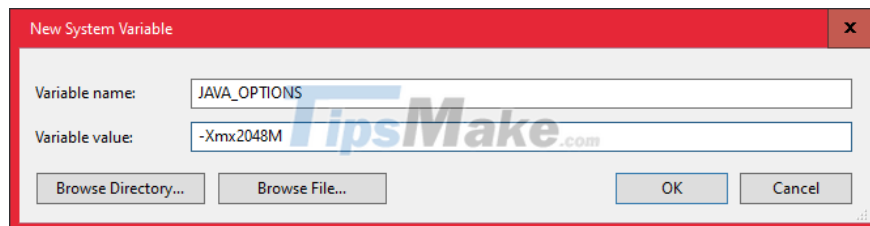
Then you continue to click New in the System Variables section.



Then you set the following:

1. Variable name you enter `JAVA_OPTIONS`
2. The variable value you enter is `-Xmx512M` to determine the maximum amount of RAM that Minecraft can use, in this example I let it be 512MB. You can change it to `-Xmx1024M` or `-Xmx2048M`.

=> Finally you click OK to execute.



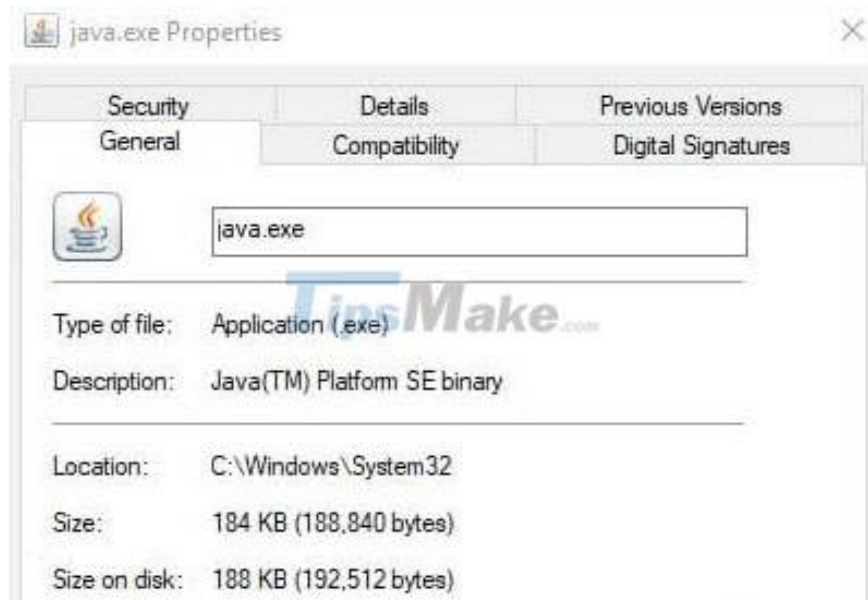
## 2. Run Java with Admin rights

To do this, press the Windows + S key combination to open Windows Search => then enter the search keyword Java.

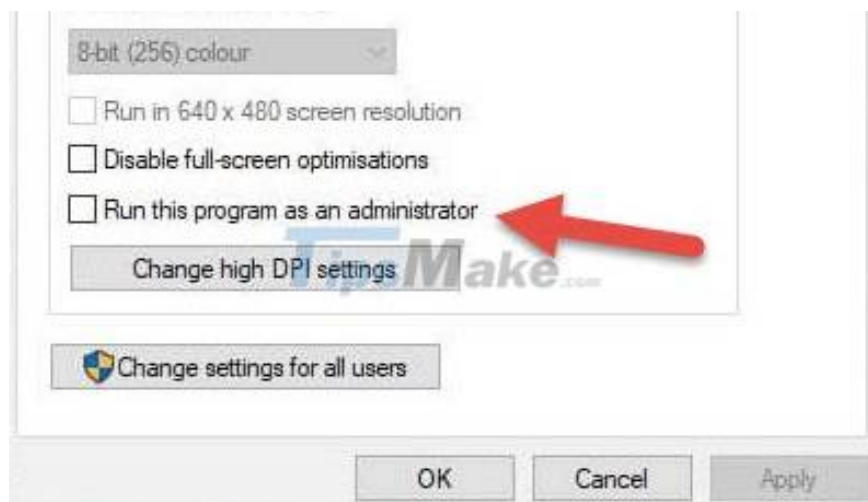
If there is a Java shortcut available on the Desktop, right-click the shortcut.

Right-click on the result it finds => then click Open file location to access the Java installation directory.

=> Next you right-click on the java.exe file => and select Properties.



You switch to the Compatibility tab => then you tick the Run this program as an administrator section. Finally click Apply => OK to finish.



### 3. Reinstall Java

Reinstalling Java is also sometimes a way to fix this. Maybe your Java failed to install. You should also download the Java Offline version to avoid errors when installing.

### 4. Conclusion

Ok, so I have finished showing you how to fix Could not create the Java Virtual Machine error on Windows operating system. Good luck.

You finished reading the article "**Error Could not create the Java Virtual Machine when running Minecraft**" edited by the [TipsMake](#) team. We hope this article has provided you with many useful tech tips and tricks. You can search for similar articles on tips and guides. Thank you for reading and for following us regularly.

---

