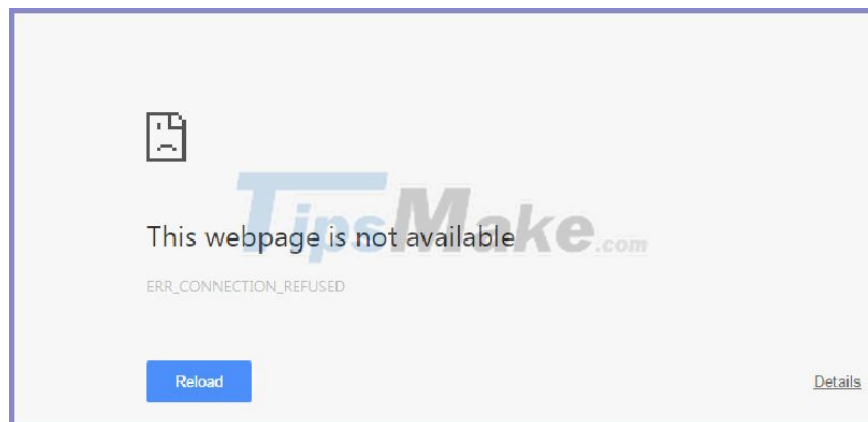


Err-Connection-Refused error and Err_Connection_Closed error on Chrome

Share solutions to fix Err_Connection_Refused and Err_Connection_Closed errors on Google Chrome browser.

These errors appear to prevent us from accessing the web using the Chrome browser, often caused by a DNS problem or a Proxy Server error causing connection timeout. Now you can apply some methods such as restarting Modem or changing DNS and many other methods below.

This article freetuts would like to share 7 methods to help you fix **Err_Connection_Refused** or **Err_Connection_Closed** error on Google Chrome browser.



Solution 1: Check the network connection

1. Check network connection

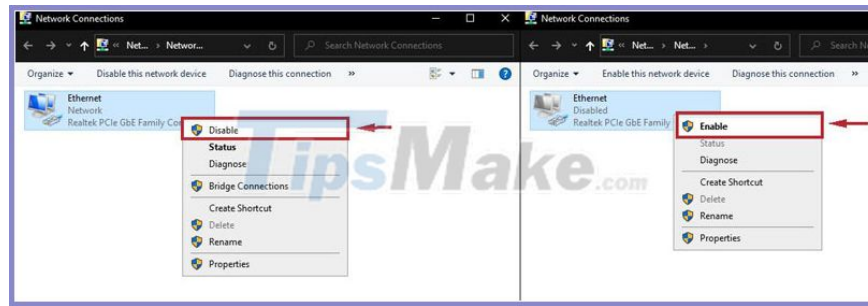
On a Windows computer there is always an icon showing the Internet connection status in the right corner of the screen, hover your mouse pointer over it, if it shows **Internet access**, the network connection is fine. On the contrary, if you have a red slash or exclamation point, please visit the article to see instructions to fix the error.

2. Reboot your network / network card and run Windows debugger

Or the Internet is stable, you should still restart the network and run the error fix following these steps:

Step 1: Press the key combination `Windows + R` then enter: `ncpa.cpl`

Step 2: Right-click on the Internet you are connecting to and select **Disable** to disable, then right-click again and then click **Enable** to re-enable it.



Step 3: Right-click on the connected Internet, select **Diagnose**, then follow the Windows instructions to start the process of self-finding and fixing system errors.

3. Restart the Wifi Router / Modem

In many articles I mentioned that the Internet connection can be interrupted by the Router or Wifi Modem, there is a high chance that they have been operating for a very long time without a break, now please restart Modem / Router.

The restart step is very simple, just unplug and press the power button behind the Modem / Router and wait about half a minute. Then connect the power plug and turn the power button back on as usual.

Solution 2: Clear browser cache

Basic cache is created to improve the web loading speed of the browser, but in some cases it causes unnecessary errors.

In the article on how to clear the cache, I mentioned in detail about the use of the cache as well as how to delete it, please follow the instructions to fix **Err_Connection_Refused** and **Err_Connection_Closed** errors on Google Chrome browser.

Solution 3: change the DNS address

Sometimes interrupted DNS service on the computer can also be the underlying cause of **Err_Connection_Refused** and **Err_Connection_Closed** errors , you can try to fix it through the following two tutorials:

1. How to change DNS to Google
2. How to check DNS and clear DNS Cache of the Domain

Solution 4: Try disabling the firewall and other antivirus software

In the article What is a firewall and how to turn off the firewall, I have instructed you to turn off the firewall available on Windows that is Windows Firewall. Please refer to the article to know how to turn off the firewall simply.

Also, if you are installing anti-virus software, configuring their built-in firewalls can block the common website "mistakenly" causing you to get **Err_Connection_Refused** and **Err_Connection_Closed** errors . Now you try to disable / disable these anti-virus software temporarily see how.

Solution 5: Use an antivirus program

If you have not installed anti-virus software, please refer to the best antivirus software available today. Chances are that your computer is heavily infected with Viruses, they will destroy your operating system and Internet connection and your browser leading to **Err_Connection_Refused** or **Err_Connection_Closed** error . Try using anti-virus software to clean your computer and fix this annoying error.

Solution 6: Check for malware with the Chrome Cleanup Tool

Google Chrome browser has a very nice feature that few users pay attention to, which is the Chrome Cleanup Tool. The main feature of this tool is to find and remove malware on your computer, it is similar to an antivirus program. However, the program mainly monitors and scans for sensitive software affecting your web browsing.

Step 1: Type the following option in the address bar and press Enter to access Chrome's computer cleaner.

```
chrome: // settings / cleanup
```

Step 2: Click **Find** to let the malware scan and fix take place automatically.

Solution 7: Reinstall Chrome or switch to another browser

In the guide to fix the site can't be reached, at the 9th way, I instructed to reinstall Google Chrome browser quite in detail, please refer to repairing my browser, this ability is not available. But it can also happen because the software might have been compromised for some reason.

Then if the software still has **Err_Connection_Refused** and **Err_Connection_Closed** errors , I think it's best to switch to these best web browsers, on the list you will definitely find a perfect choice that is not inferior to Google browser. Chrome.

You finished reading the article "**Err-Connection-Refused error and Err_Connection_Closed error on Chrome**" edited by the [TipsMake](#) team. We hope this article has provided you with many useful tech tips and tricks. You can search for similar articles on tips and guides. Thank you for reading and for following us regularly.