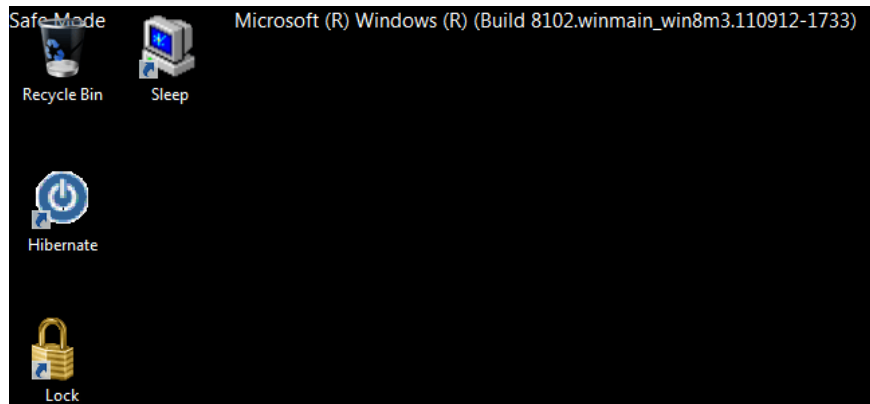


Enable, use, and disable Safe Mode in Windows 8

In the Windows operating system versions, usually we will boot into Safe Mode to try to fix the problem. However, by default this mode is not enabled on Windows 8, users need to do this manually.

If you have installed the Windows 8 Developer Preview version released by Microsoft and encounter some problems when launching, this is also obvious in beta stage software. In the Windows operating system versions, usually we will boot into **Safe Mode** to try to fix the problem.

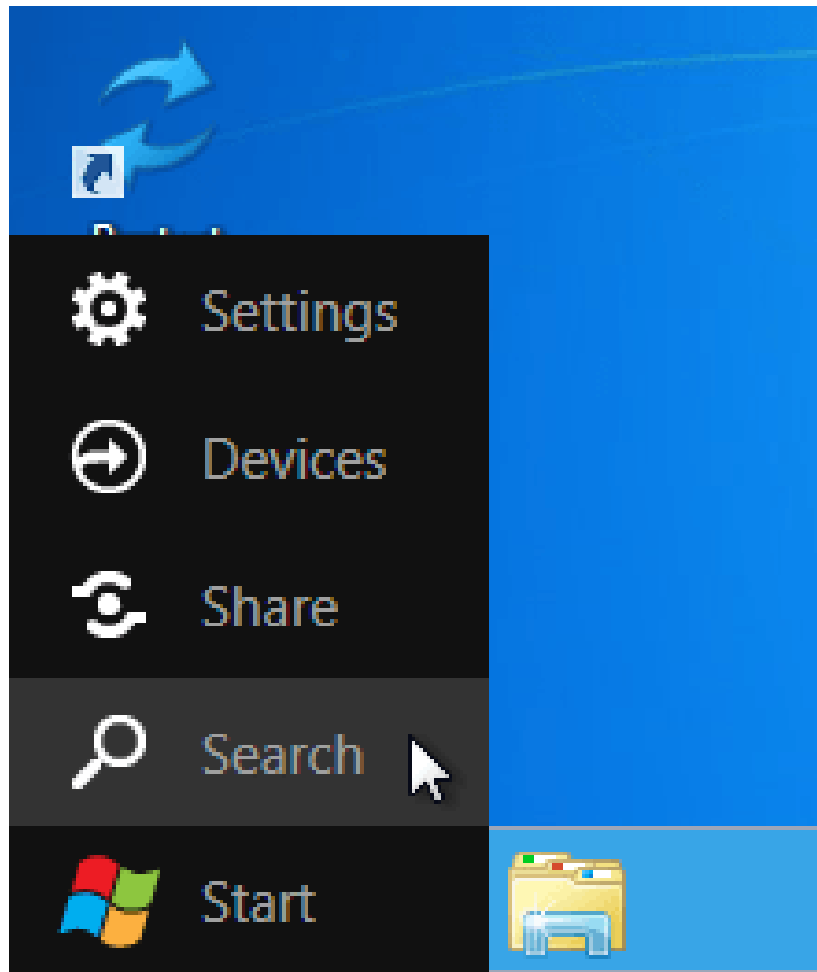
However, by default this mode is not enabled on Windows 8, users need to do this manually. The following article will show you how to enable Safe Mode, boot into, and then disable it.



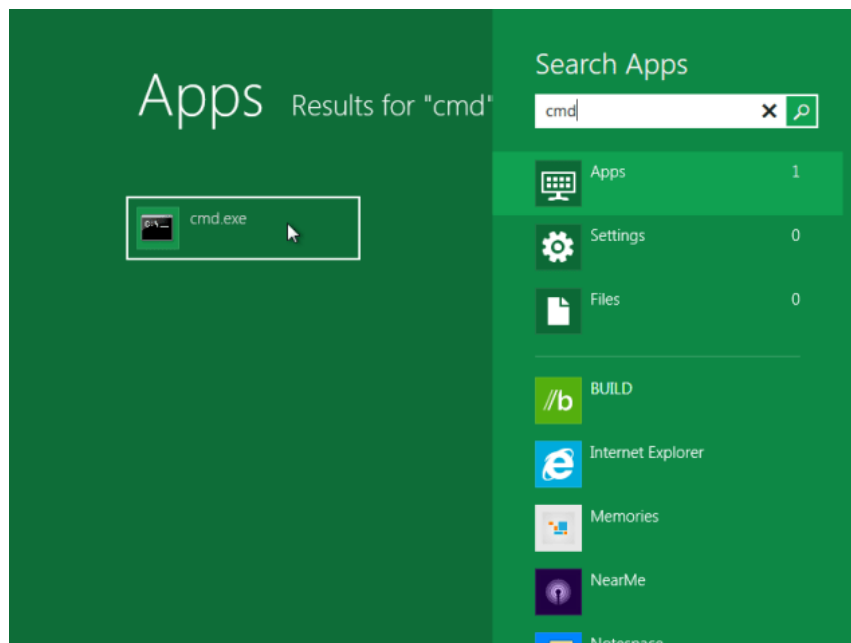
1. Activate

First, to enable Safe Mode, open the **Command Prompt** window. There are many ways to do this through the **Metro** interface, Windows 7 **Start** menu, or **Windows Explorer** to search for the ' **cmd.exe** ' command.

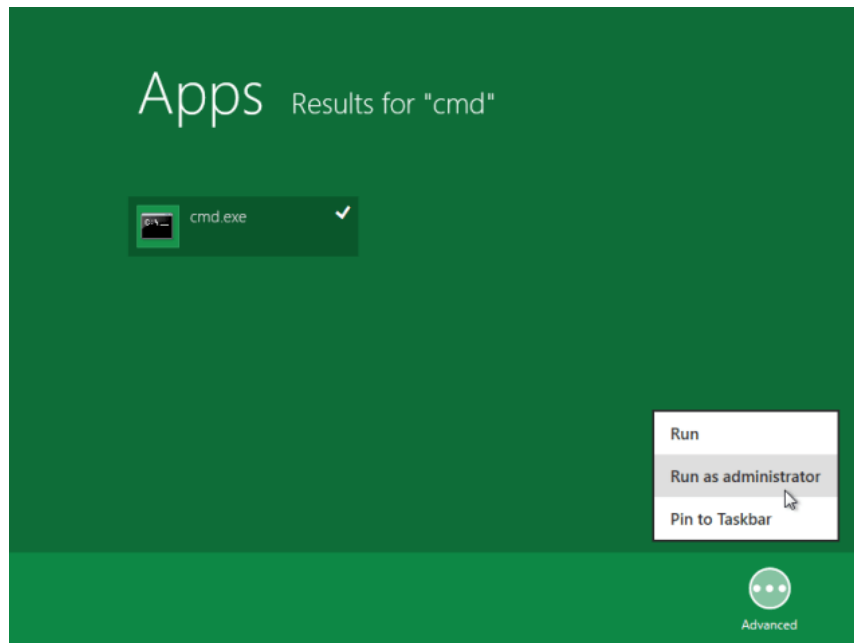
To use Metro UI, open the Desktop from the **Metro Start** screen, move the mouse pointer to the **Start** icon and select **Search** :



Scroll down and enter **cmd** in the Search box, the results will show up on the left. Right-click ' *cmd.exe* ':

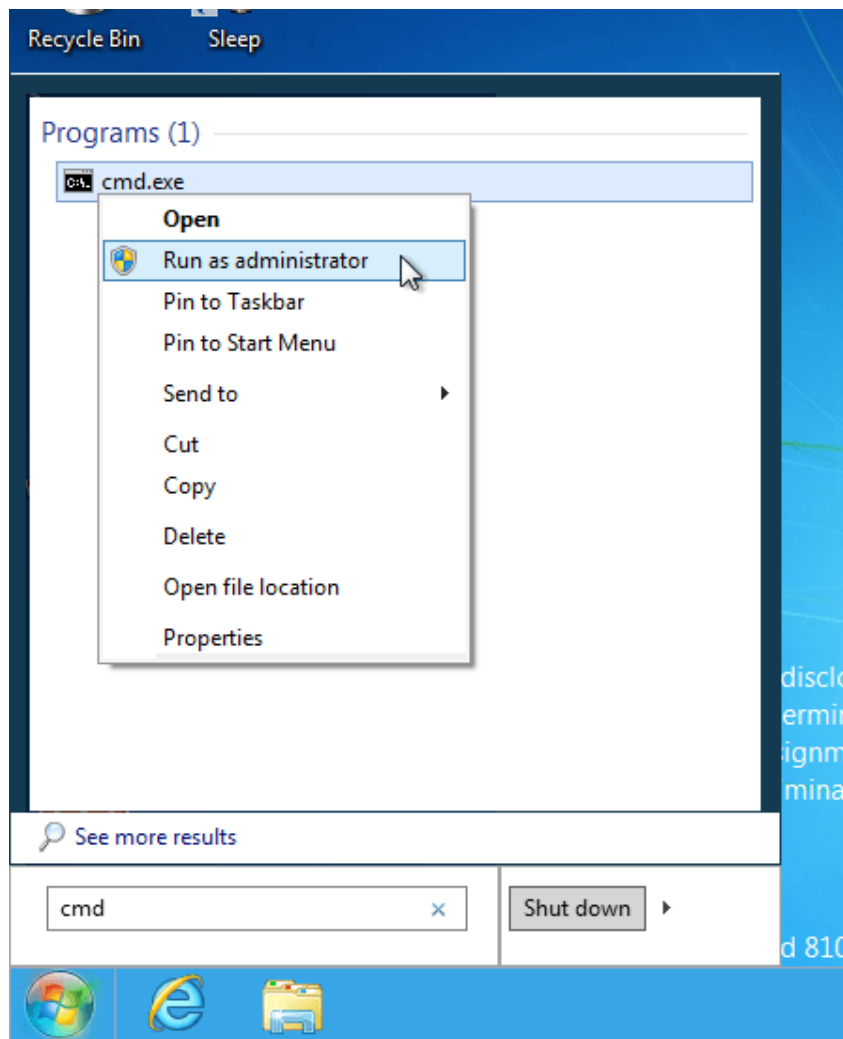


This item will be highlighted and display the **Advanced** icon in the lower right corner of the screen. Click **Advanced** and select **Run as administrator** from the popup menu.

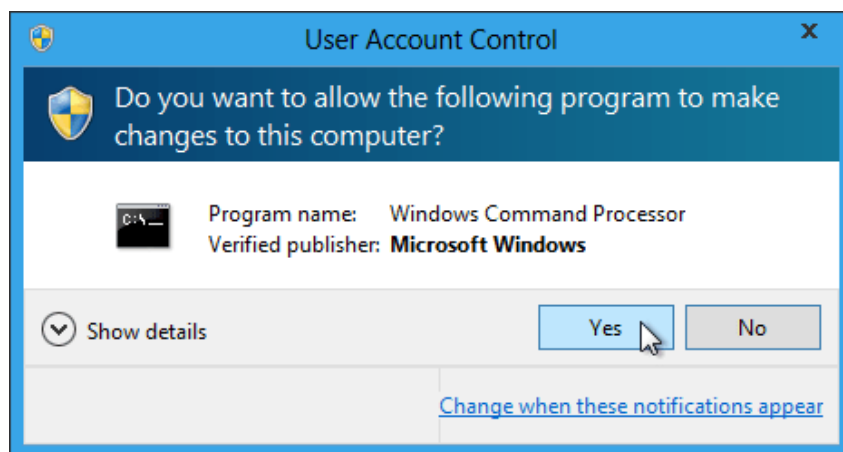


If you don't like the Metro interface, you can activate the Start menu in Windows 7 and use it to search for the 'cmd' command. Right-click 'cmd.exe' select *Run as administrator* from the popup menu.

Note: Start menu in Windows 7 is useful if you want to open *cmd.exe* or *msconfig.exe* while in Safe Mode using Metro UI Search function. As tested, we could not find *cmd.exe* and *msconfig.exe* via Metro UI in Safe Mode. Another way is to use *Windows Explorer* and search in *C: Windows* .



If the warning *User Account Control* appears, click **Yes** :



At the command prompt, enter the command line below and press **Enter** :

```
bcdedit / enum / v
```

```
Administrator: C:\Windows\System32\cmd.exe
Microsoft Windows [Version 6.2.8102]
(c) 2011 Microsoft Corporation. All rights reserved.
C:\Windows\system32>bcdedit /enum /v_
```

Enter the following command with a space at the end. Absolutely **DO NOT** press Enter:

bcdedit / copy

```
Administrator: C:\Windows\System32\cmd.exe
integrityservices Enable
default {ca3b4e6b-e4f9-11e0-a8ad-b94fc1e86234}
resumeobject {ca3b4e6a-e4f9-11e0-a8ad-b94fc1e86234}
displayorder {ca3b4e6b-e4f9-11e0-a8ad-b94fc1e86234}
toolsdisplayorder {b2721d73-1db4-4c62-bf78-c548a880142d}
timeout 30

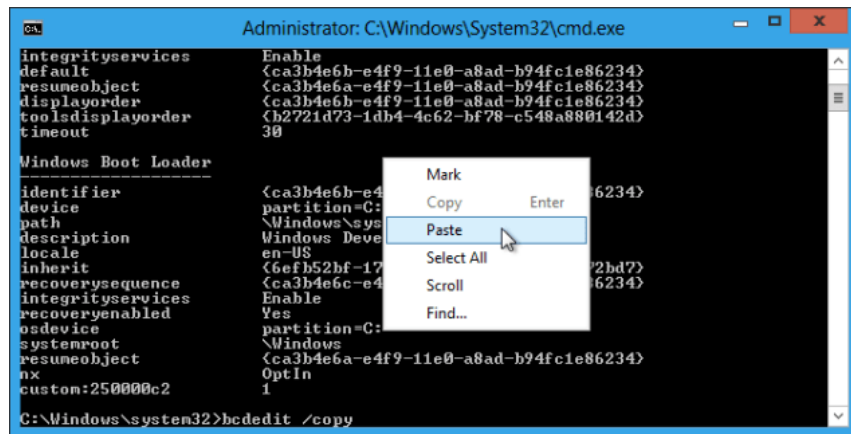
Windows Boot Loader
-----
identifier {ca3b4e6b-e4f9-11e0-a8ad-b94fc1e86234}
device partition=C:
path \Windows\system32\winload.exe
description Windows Developer Preview
locale en-US
inherit {6efb52bf-1766-41db-a6b3-0ee5eff72bd7}
recoverysequence {ca3b4e6c-e4f9-11e0-a8ad-b94fc1e86234}
integrityservices Enable
recoveryenabled Yes
osdevice partition=C:
systemroot \Windows
resumeobject {ca3b4e6a-e4f9-11e0-a8ad-b94fc1e86234}
nx OptIn
custom:250000c2 1
C:\Windows\system32>bcdedit /copy_
```

This is only part of the command line needed. To be more complete you need to copy the **identifier** entry from the **Windows Boot Loader** . Right-click on the window and select **Mark** from the popup menu:

```
Select Administrator: C:\Windows\System32\cmd.exe
integrityservices Enable
default {ca3b4e6b-e4f9-11e0-a8ad-b94fc1e86234}
resumeobject {ca3b4e6a-e4f9-11e0-a8ad-b94fc1e86234}
displayorder {ca3b4e6b-e4f9-11e0-a8ad-b94fc1e86234}
toolsdisplayorder {b2721d73-1db4-4c62-bf78-c548a880142d}
timeout 30

Windows Boot Loader
-----
identifier {ca3b4e6b-e4f9-11e0-a8ad-b94fc1e86234}
device partition=C:
path \Windows\system32\winload.exe
description Windows Developer Preview
locale en-US
inherit {6efb52bf-1766-41db-a6b3-0ee5eff72bd7}
recoverysequence {ca3b4e6c-e4f9-11e0-a8ad-b94fc1e86234}
integrityservices Enable
recoveryenabled Yes
osdevice partition=C:
systemroot \Windows
resumeobject {ca3b4e6a-e4f9-11e0-a8ad-b94fc1e86234}
nx OptIn
custom:250000c2 1
C:\Windows\system32>bcdedit /copy
```

Then hold down the left mouse button and highlight the definition next to the **identifier** (including parentheses). Press **Enter** to copy it:

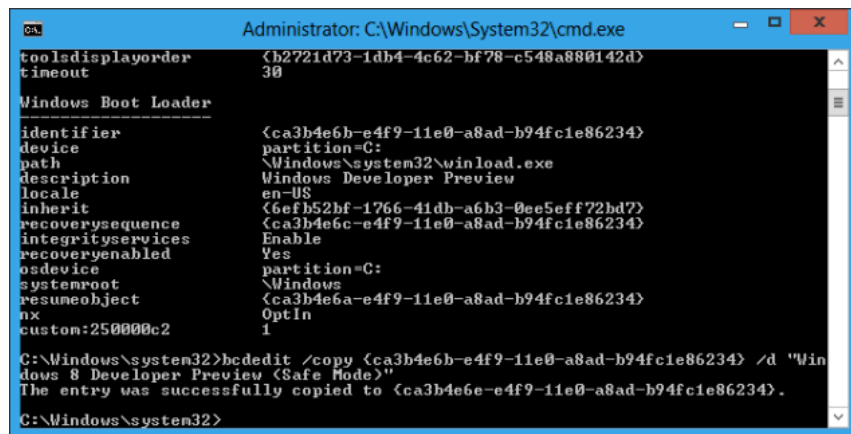


```
Administrator: C:\Windows\System32\cmd.exe
integrityservices Enable
default <ca3b4e6b-e4f9-11e0-a8ad-b94fc1e86234>
resumeobject <ca3b4e6a-e4f9-11e0-a8ad-b94fc1e86234>
displayorder <ca3b4e6b-e4f9-11e0-a8ad-b94fc1e86234>
toolsdisplayorder <b2721d73-1db4-4c62-bf78-c548a880142d>
timeout 30

Windows Boot Loader
-----
identifier <ca3b4e6b-e4f9-11e0-a8ad-b94fc1e86234>
device partition=C:
path \Windows\system32\winload.exe
description Windows Developer Preview
locale en-US
inherit <6efb52bf-1766-41db-a6b3-0ee5eff72bd7>
recoverysequence <ca3b4e6c-e4f9-11e0-a8ad-b94fc1e86234>
integrityservices Enable
recoveryenabled Yes
osdevice partition=C:
systemroot \Windows
resumeobject <ca3b4e6a-e4f9-11e0-a8ad-b94fc1e86234>
nx OptIn
custom:250000c2 1

C:\Windows\system32>bcdedit /copy
```

Finally right-click and select **Paste** to paste the above code into the command `bcdedit /copy`.



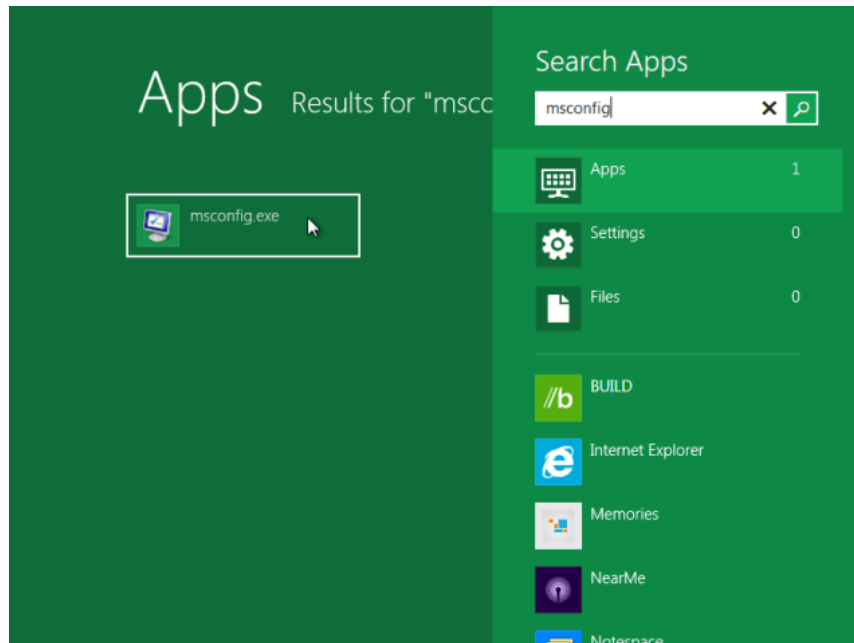
```
Administrator: C:\Windows\System32\cmd.exe
toolsdisplayorder <b2721d73-1db4-4c62-bf78-c548a880142d>
timeout 30

Windows Boot Loader
-----
identifier <ca3b4e6b-e4f9-11e0-a8ad-b94fc1e86234>
device partition=C:
path \Windows\system32\winload.exe
description Windows Developer Preview
locale en-US
inherit <6efb52bf-1766-41db-a6b3-0ee5eff72bd7>
recoverysequence <ca3b4e6c-e4f9-11e0-a8ad-b94fc1e86234>
integrityservices Enable
recoveryenabled Yes
osdevice partition=C:
systemroot \Windows
resumeobject <ca3b4e6a-e4f9-11e0-a8ad-b94fc1e86234>
nx OptIn
custom:250000c2 1

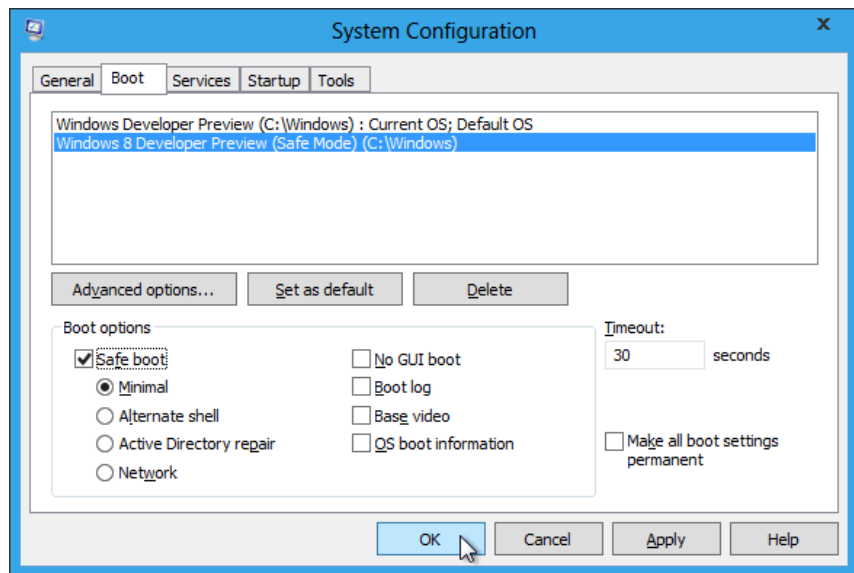
C:\Windows\system32>bcdedit /copy <ca3b4e6b-e4f9-11e0-a8ad-b94fc1e86234> /d "Win
dows 8 Developer Preview (Safe Mode)"
The entry was successfully copied to <ca3b4e6e-e4f9-11e0-a8ad-b94fc1e86234>.

C:\Windows\system32>
```

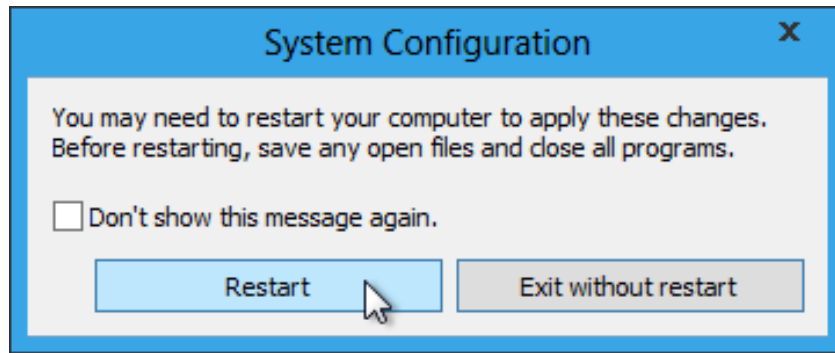
Press a space and type the **'Windows 8 Developer Preview (Safe Mode) / d'** at the end of the line. Press **Enter** to execute the command:



Close this command prompt window. Open msconfig.exe (similar to cmd.exe). You do not need to run as an administrator.

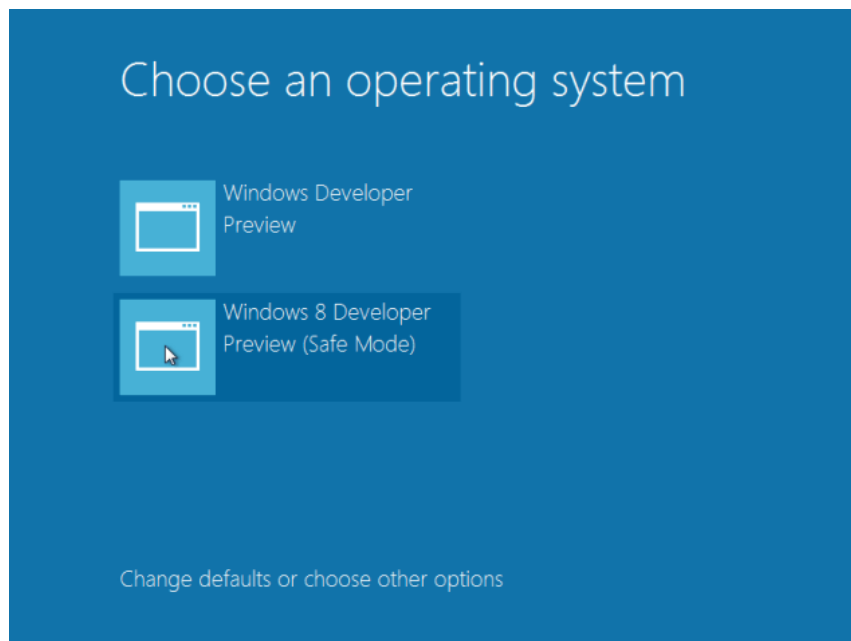


To get Safe Mode when starting, select **Windows 8 Developer Preview (Safe Mode)** in the list of Boot tab and tick the **Safe boot** box. Keep the default **Minimal** option below. So Safe Mode will automatically run when you restart your computer:

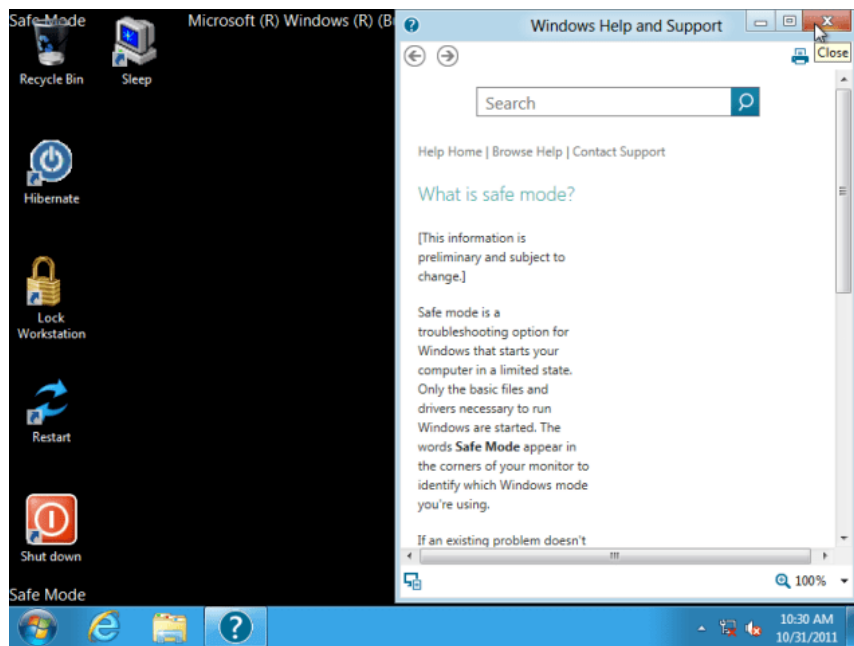


2. Use

Click *Restart* when asked if you want to try the result:



Sometimes Safe Mode may not automatically run, instead the option screen displays whenever you turn on the device. Select **Windows 8 Developer Preview (Safe Mode)** to enter Safe Mode:



Windows will boot directly into the Desktop screen, not the Metro interface as usual. And the familiar *Windows Help and Support* window also appears to provide information about Safe Mode. Now you can start your repair work.

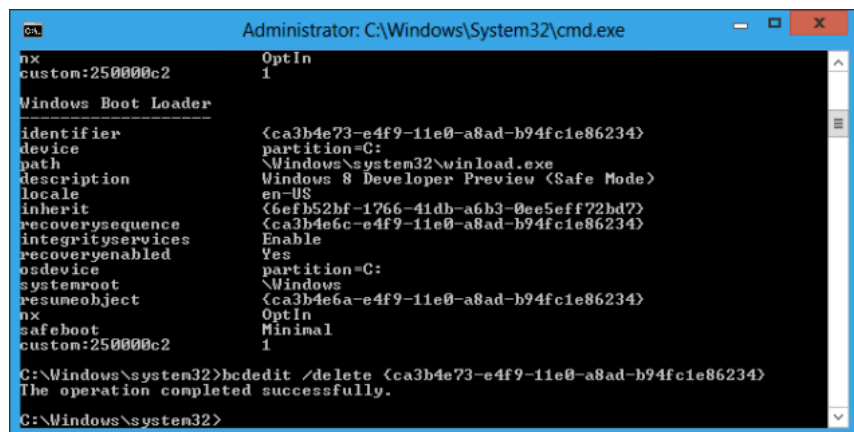
3. Disable Safe Mode

Next, if you want to delete the Safe Mode option at startup, reopen the cmd.exe window as administrator as **part 1** . Still with the above note, you may need to use the Start menu like Windows 7 to search for cmd.exe in the C: *Windows* folder of Windows Explorer.

Enter the following command, add a space at the end and **DO NOT** press Enter:

`bcdedit / delete`

Similar to the above instructions, use the **Mark** menu to copy the contents of the **identifier** , then paste it into the command line `bcdedit / delete` and press **Enter** to execute:



A message appears indicating the activities were successful. Or you can turn off Safe Mode by going to msconfig.exe (this is why we recommend using the Windows 7 Start menu to find this dialog) and uncheck Windows 8 Developer Preview (Safe Mode) , then restart the computer.

You finished reading the article "**Enable, use, and disable Safe Mode in Windows 8**" edited by the [TipsMake](#) team. We hope this article has provided you with many useful tech tips and tricks. You can search for similar articles on tips and guides. Thank you for reading and for following us regularly.