

Enable Safe Mode in Windows 7

There are many problems with the operating system when misconfiguring the software or installing the wrong driver, then the job we need to do is to uninstall what has just been done. However, there are many cases of unacceptable errors in the normal desktop. Then we can use Safe Mode to fix this.

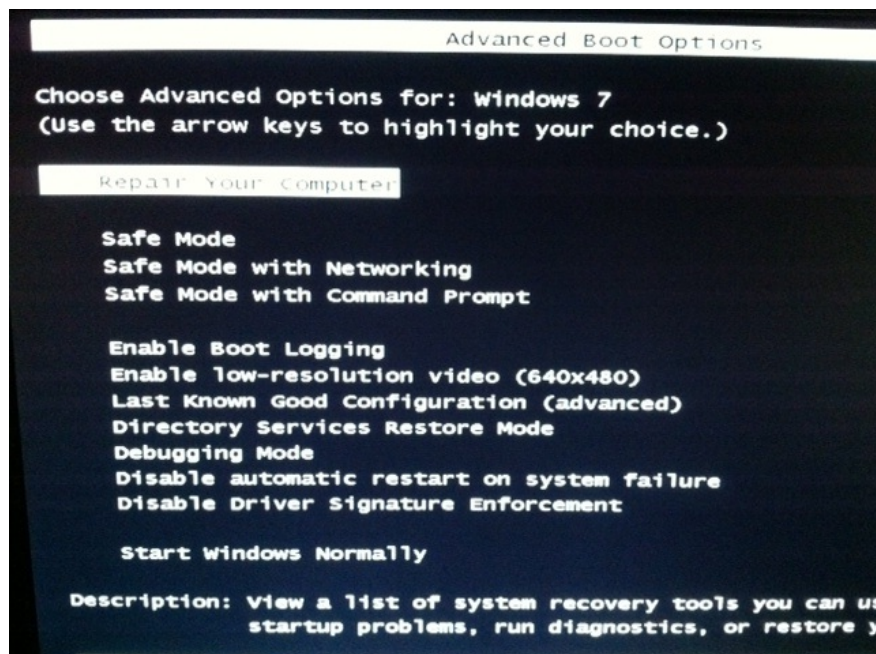
There are many problems with the operating system when misconfiguring the software or installing the wrong driver, then the job we need to do is to uninstall what has just been done. However, there are many cases of unacceptable errors in the normal desktop. Then we can use **Safe Mode** to fix this.

Windows 7 is considered the most stable operating system of Microsoft ever, but it is inevitable that the blue screen error - BSOD or the popular black screen error. No wonder there is a problem when you upgrade the **BIOS** or download new drivers, or just surf the web. However, that doesn't mean you have to throw away your device and replace it with a new one.

When a computer fails or the operating system has problems starting up, the problem is often the misconfiguration of the recently installed software or driver. Installation may go smoothly, but when you reboot the system, chances are you'll get an error. If you cannot access the desktop, you will not be able to uninstall the installed program or driver.

Luckily for us, Microsoft supports an internal Windows tool called **Safe Mode** to help you fix the above problems. **Safe Mode** is a "bare-bone" version of Windows operating system, it only has the necessary drivers for booting the system, allowing you to access the desktop without any settings or intervention. other software. Once you have access to the desktop, you can completely fix the problem, eliminate the problem and start the system normally.

To enter **Safe Mode** , we need to follow these steps:



You can see **Safe Mode** in the **Advanced Boot Options** menu

1. Turn on or restart the computer
2. Wait until the computer starts hardware and prepare to load the operating system.
3. Press and hold the **F8** key while waiting for the Windows logo to appear. If the Windows logo appears or if the operating system starts to load, you need to restart the computer to perform this task again.
4. The **Advanced Boot Options screen** for Windows will appear. Use the arrow keys on the keyboard to select **Safe Mode** and press **Return**.
5. If you need Internet or network access in **Safe Mode**, select **Safe Mode with Networking**.
6. Windows will boot in **Safe Mode**. When the desktop appears, it will display ' **Safe Mode** ' in all four corners of the screen to let you know that you are in special mode.
7. When finished, click **Start, Shut Down, Restart** to restart the computer as usual.

Good luck!

You finished reading the article "**Enable Safe Mode in Windows 7**" edited by the [TipsMake](#) team. We hope this article has provided you with many useful tech tips and tricks. You can search for similar articles on tips and guides. Thank you for reading and for following us regularly.