

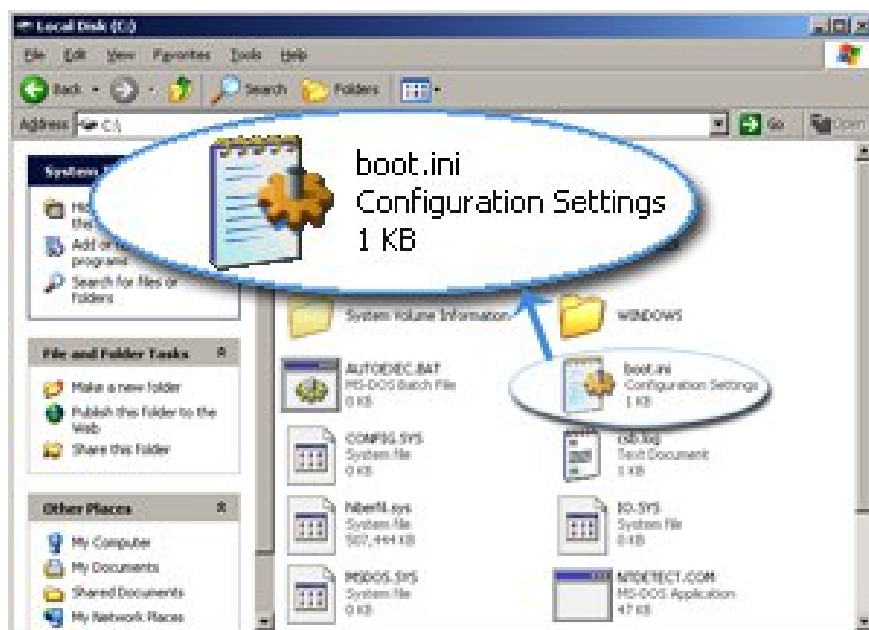
## Edit the Boot.ini file in Windows XP

Windows XP has just been updated but after restarting, there is an error message Invalid Boot.ini or Windows could not start because the following file is missing or corrupt: WindowsSystem32Hall.dll, what will you do? Do you want to re-select the first boot-up operating system in your multi-operating system?

Windows XP has just been updated but after restarting, the error message " *Invalid Boot.ini* " or " *Windows could not start because the following file is missing or corrupt: WindowsSystem32Hall.dll* ", what will you do? Do you want to re-select the first boot-up operating system in your "multi-operating system" system? All of these actions require a small impact on the Windows XP Boot.ini file system, which is completely solvable. This article TipsMake.com will guide you how to view and configure manually for the Windows XP Boot.ini file from within the Startup and Recovery dialog box.

In Windows XP, you can quickly and easily find the location of the Boot.ini file to be able to check or edit this file system.

***Before having any modifications to the file system you should back up the file, in which case you need to backup the Boot.ini file before editing*** . The first task to do is to remove the option to hide the file system and then back up the Boot.ini file.



### Remove the option to hide system files

1. Right-click Start and select **Explore** .

3. Go to Tools and select **Folder Options** .
4. In the *Folder Options* dialog box, select the **View** tab
5. In the *Advanced Settings* section, click **Show hidden files and folders** , remove the **Hide extensions for known files types** and **Hide protected operating system files (Recommended)** . Click **Yes** to confirm that you want to display the entire file system, and then click **OK** .

### **Back up the Boot.ini file**

1. Right-click **My Computer** then select **Properties** .  
or  
Click **Start**, click **Run** , type **sysdm.cpl** and then click **OK**
2. On the *Advanced* tab, select **Settings** under *Startup and Recovery* .
3. Under *System Startup* , click **Edit** . The Notepad program will open the system Boot.ini file for editing.
4. In Notepad, click **File** on the menu bar and select **Save As**
5. Right-click an empty area of the *Save As* dialog box, select **New -> Folder**
6. Enter a name for the new folder ( *Luu* for example) and press **Enter** to create a new archive folder for the Boot.ini file
7. Double-click the newly created folder, then click the **Save** button to save a copy of the Boot.ini file to the new folder.

### **Edit the Boot.ini file**

Close the recently opened Notepad file window. Repeat steps 1-3 above to reopen the Boot.ini file.

### **Sample Boot.ini file**

This is the default sample content of the Boot.ini file in a *Windows Xp Professional* computer:

```
[boot loader]
timeout = 30
default = multi (0) disk (0) rdisk (0) partition (1) WINDOWS
[operating systems]
multi (0) disk (0) rdisk (0) partition (1) WINDOWS = "Microsoft Windows XP Professional" /
fastdetect
```

Here is the sample file of the Boot.ini file of the computer, but the Windows 2000 operating system is installed on another drive:

**[boot loader]**

**timeout = 30**

**default = multi (0) disk (0) rdisk (0) partition (1) WINDOWS**

**[operating systems]**

**multi (0) disk (0) rdisk (0) partition (1) WINDOWS = "Windows XP Professional" / fastdetect**

**multi (0) disk (0) rdisk (0) partition (2) WINNT = "Windows 2000 Professional" / fastdetect**

### **Edit the Boot.ini file**

When editing the Boot.ini file using Startup and Recovery, you can select the default operating system to boot first, change the timeout value or edit the file manually using the command-line *Bootcfg.exe utility* .

*Note* : The Bootcfg.exe utility is only available in Windows XP Professional, which is not available in Microsoft Windows XP Home Edition. Therefore, this section does not apply to Windows XP Home Edition.

1. Click **Start** to select **Run**
2. In the **Open** box, type **cmd** and press **Enter**
3. At the command **prompt** , enter **bootcfg /?**
4. Help and parameters of BOOTCFG.exe will be displayed

### **Add an operating system**

*Note* : This is not a complete installation of an operating system. At the command window enter:

**bootcfg / copy / d Operating System Description / ID #**

In which *Operating System Description* is the description of the operating system (eg Windows XP Home Edition) and # is to specify the boot ID of the operating system segment in BOOT.INI file from the created copy .

### **Erase an operating system**

At the input window:

**bootcfg / delete / ID #**

In which # is to specify the boot ID that you want to delete from the operating system segment in the BOOT.INI file (for example, 2 for the second operating system listed)

### **Set the default operating system**

At the input window:

## **bootcfg / default / ID #**

In which # to specify the boot input ID of the operating system segment in the BOOT.INI file you need to set as the default operating system.

### **Set timeout**

At the command window enter the command **bootcfg / timeout #** in which # to specify the time (in seconds) so that the default operating system will be loaded

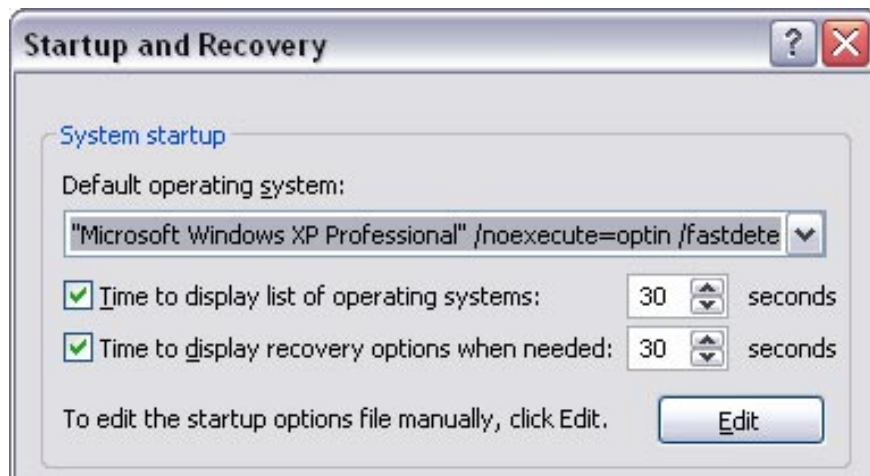
After editing the necessary content, go to **File and** choose **Save** .

Click **OK** to exit *Startup and Recovery* and then click **OK** .

Restart the computer to see the change before starting Windows

### **Safe method**

The above instructions apply to those who are interested in learning about the edit commands in the Boot.ini file, if you are not proficient, but also need to edit the necessary parameters (such as waiting time, resetting the system. default operating .) you can use the options in the *Startup and Recovery* dialog box.



The components are as follows:

- **Default operating system** : select the default *operating system* first boot.
- **Time to display list of operating system** : the time to choose which *operating system* to use (when there are two or more operating systems).
- **Time to display recovery options when needed** : Time to select recovery options in case of need.

### **System restore when there is a problem**

If after manually editing the Boot.ini file and your computer starts to crash, start the computer in safe *mode*

(press **F8** during the boot process and select **Safe Mode** ). Then copy the Boot.ini file that you backed up back to the C: drive (this is done when you have displayed all of the hidden system files).

You finished reading the article "**Edit the Boot.ini file in Windows XP**" edited by the [TipsMake](#) team. We hope this article has provided you with many useful tech tips and tricks. You can search for similar articles on tips and guides. Thank you for reading and for following us regularly.

---