

DTCL season 8.5: Big changes to the shopping cycle, Ultimate Ezreal, Infinity Squad

DTCL 8.5 will still be like the previous mid-season updates of Truth Arena. There will be 15 champions removed and new champions joining you in DTCL season 8.5.

TFT 8.5, the mid-season update version will come to gamers at the end of March on the official server along with a series of new updates, along with which generals, clans, technology upgrades and heroes will all be available. revised compared to the original released specifications.

The number of new champions will be lower than other mid-season updates when only 14 champions were released. However, there are a few old champions that have been reworked. Below is all the new content of DTCL season 8.5.

Rework the general selection round in DTCL season 8.5

Rebel generals will spawn in Stage 2, but also have a chance to respawn from Stages 3 to 6. Most games will have two or fewer Rebel generals, but some games will there are three.

The general Rebellion round in phase 2, you can expect more champions to hold things like additional defensive or offensive component items, life dolls, charge dice, golden eggs.



Sometimes, there won't even be champions on the Carousel, instead you'll see Anvils that contain equipment dancing in place of champions.

In phase 3, the Rebellion general selection round will have more changes to become an Anvil containing component equipment, golden eggs or creating items that copy champions with 3 gold or less. When in stages 4 and 5, the opportunity to receive things like a fully equipped Anvil, or even an anvil with Ornn's equipment is completely possible. By stage 5 or 6 you can even see the Anvil containing the clan seal and clone.



Another new feature that you will notice is that the champions you choose in the general selection round will be popped when you return to the stage. This is considered a step to improve the quality of the shopping cycle.

Champions and clans were removed in TFT 8.5



General has been removed

There are 15 champions removed in this mid-season update, which is not as many as other mid-season updates. But in return, there will be some old generals modified to new clans such as Sivir, Ezreal,

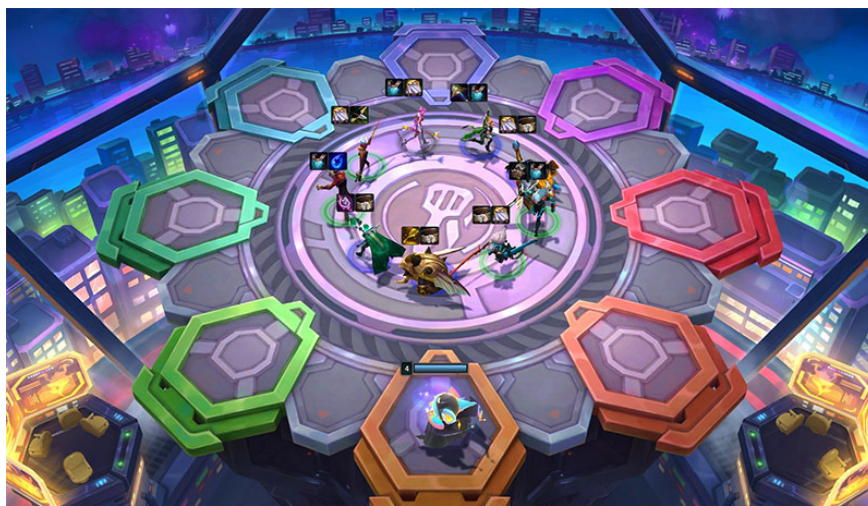
1. Galio (Civilian + Mascot)
2. Talon (Taurus + Heathen)
3. Sivir (Civilian + Gunner)

4. Senna (Laser Corps)
5. Yuumi (Star Guardian + Mascot + Lover)
6. Cho'Gath (Peril)
7. Zoe (Prodigy + Hacker + Super Trick)
8. Vel'Koz (Peril)
9. Sett (Armor + Guardian)
10. Sejuani (Laser Legion + Gladiators)
11. Soraka (ADMIN + Lover)
12. Taliyah (Star Guardian + Magician)
13. Zac (Peril)
14. Zed (Laser Legion + Duel + Hacker)
15. Aphelios (Rescuer + Gunner + Expert)

The clan was removed in DTCL season 8.5

1. **Master**
2. **Special force**
3. **Civilian**

New clan of Truth Arena season 8.5



Four clans are included in DTCL season 8.5, one of which is only for 5-cost champions.

Quick Draw

Including: Lucian, Ezreal, Kai'Sa, Miss Fortune

After every 2 skill bullets that deal damage, Quick Draw champions will fire an additional skill bullet at their target.

1. **2 Quick Draw:** +60% total damage
2. **3 Quick Draw:** +100% total damage
3. **4 Quick Draw:** +139% total damage

Quick Draw is essentially the new Special Ops, a trait that focuses on backline DPS damage on just a few champions. Quick Draw is quite good because Lucian and Ezreal provide buffs early and in the late game, Ultimate Ezreal can combine with Lucian for Infinity Squad while also providing Bisexuality with both Ezreal.

Miss Fortune is a Quick Draw champion that is difficult to combine with the other 3 champions if you do not intentionally level up to 4 Quick Draw. All Quick Draw champions have pretty effective magic damage, so be sure to build the right items for them (Mana generation, AP damage, Crit, etc).

Infinity Squad

Including: Lucian, Pantheon, Sivir, Shen, Twisted Fate, Ultimate Ezreal

Infinity Squad opens a portal to another multiverse timeline. At the start of battle, any Infinity champion placed on the portal will summon an alternate version of themselves with different items. Get each equipment for each tech upgrade you currently have.

1. **3 Infinity Squad:** 1 portal opens, 40% health and damage
2. **5 Infinity Squad:** 2 open gates, 55% health and damage
3. **7 Infinity Squad:** 2 open gates, 90% Health and Damage

Infinity Squad seems to be an interesting early game clan. In Phase 2, having an extra Infinity champion with an item can help increase the strength of the squad quite well. Additionally, it seems that the locations of the portals on the altar are different from game to game.

At higher levels, Infinity Squad sounds pretty good, but bringing in multiple champions like Lucian, Pantheon, and Sivir late game seems like a waste of slots for units. Maybe most teams will have 3 Infinity Squads on the team.

Void Traveler

The Void Traveler opens the gap between different dimensions and summons their ally Zac, who increases in power based on the Void Traveler's star level. At the same time, Zac receives the last listed Clan of the nearest Void Traveler champion.

1. **3 Void Travelers:** Summon Zac

Zac is no longer a champion you can buy in the shop, but you can still summon him with Void Traveler. This is quite an interesting clan, because having an extra tank in the team is quite valuable. The problem comes with coordinating all the units together. Pyke is the Hacker, Vex is the Mascot and Jhin is the Heathen.

This can limit the choice of team to those who only choose the Void Traveler, or simply rely on Jhin because he will definitely be a reputable carry. If Zac is strong enough, this sub-family can be an effective clan

Bisexual

1. Ezreal the Thief learns from an older, more handsome version of himself and joins him on his adventures in the future. Ezreal's underground ability becomes an explosion that hits all enemies in a straight line. Ultimate Ezreal's ability summons two additional temporary copies.

It is likely that besides the 4-gold carries, Ezreal will be the most sought-after champion when season 8.5 launches. His skills deal widespread and painful damage to enemy champions. There are also many ways to

rotate your team when you play Thief, Infinity Squad or Quick Draw if you reach level 8.

We'll have to see if Ultimate Ezreal can carry the late-game damage like Aphelios did. A Thief Ezreal will be stronger when standing next to Ultimate Ezreal.

TFT champions season 8.5



Only 14 new champions are included in this half-season update, the most special of which is Ultimate Ezreal, this is the first time that two versions of a champion have been updated for players. What are the changes to some old generals?

1. **Lucian 1 gold** - (Infinity, Quick Draw, Heathen)
2. **Pantheon 1 gold** - (Infinity, Lover)
3. **Pyke 2 gold** - (Void Traveler, Thief)
4. **Gnar 3 gold** - (Super Trick, Prodigy)
5. **Morgana 3 gold** - (Danger)
6. **Shen 3 gold** (Infinity, Guardian, Hacker)
7. **Vex - 3 gold** (Void Traveler, Mascot)
8. **Aatrox - 4 gold** (Peril)
9. **Garen - 4 gold** (God's Armor, Guard)
10. **Jhin - 4 gold** (Void Traveler, Heathen)
11. **Neeko - 4 gold** (VBTT - Magician)
12. **Twisted Fate** : 4 gold (Infinity, Dueling, Magician)
13. **Warwick - 4 gold** (ADMIN, Laser Legion, Gladiator)
14. **Ultimate Ezreal** - 5 gold (Infinity, Two Worlds, Shooter)

Upgrade DTCL 8.5 hero

You can see all the upgrades of Teamfight Tactics season 8.5 heroes in the article **Upgrading** the latest DTCL season 8.5 heroes of the generals. The higher the price of a champion, the greater the support that the champion has for the team or for that champion itself.

First edit in Truth Arena version 13.6



As always, players will have corrections as soon as the first or mid-season update. And usually in these updates there will be a lot of changes to both new and old champions. You can see details of all updates for new and old champions in **the DTCL 13.6** update content . In this update, you will have many changes with new clans and new generals.

New Spirit Beast

Chibi Zed

After launching DTCL season 8.5, DTCL store has put on shelves Chibi Zed and Super Chibi Zed. Chibi Zed's new outburst is designed to accommodate a Ninja that players have never seen before. And Zed Chibi doesn't have a finishing move, which will make gamers disappointed.

Battle Pass DTCL 8.5 will include two new arenas, along with new Chibi champions and Spirit Beasts. There is a second ball of the game where every ball is hit. Next up is the Monsters Attack arena, with a stadium on the edge of the city of Spatulopolis where all the new and greatest chibis can compete.

Players can test out all the new TA and Chibi Champions via PBE starting March 8, or purchase them from the store when DTCL 8.5 launches on March 22.

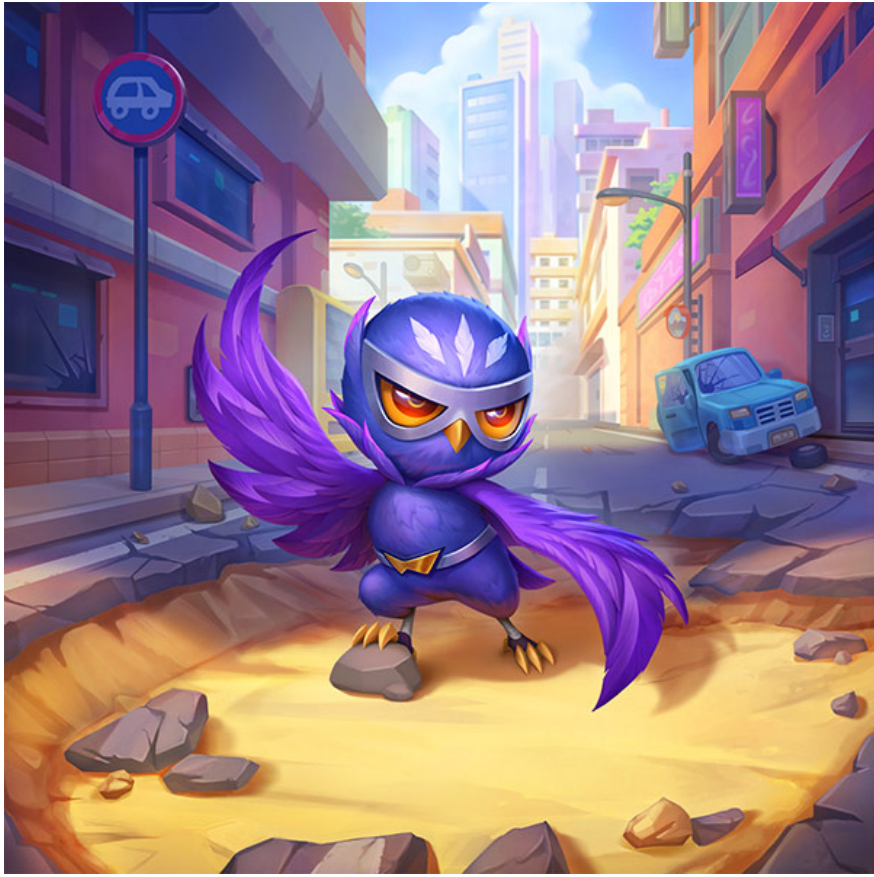
Nemesis Nimblefoot



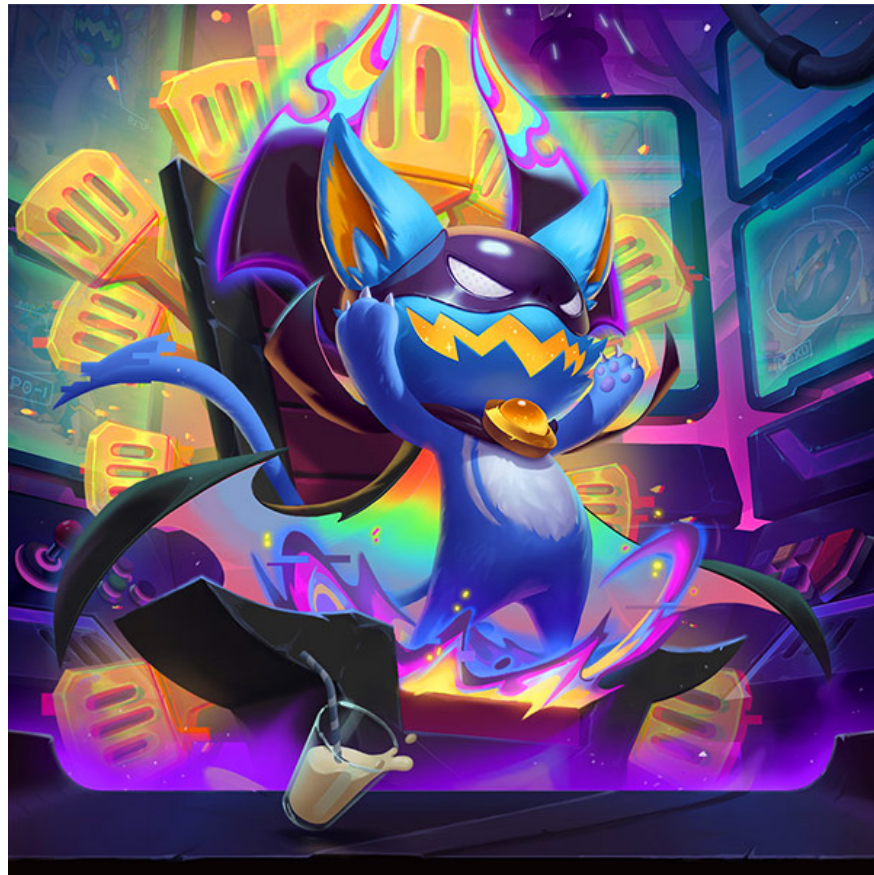
Red Hot Rango



Noctero



Ultra Threat Whisker



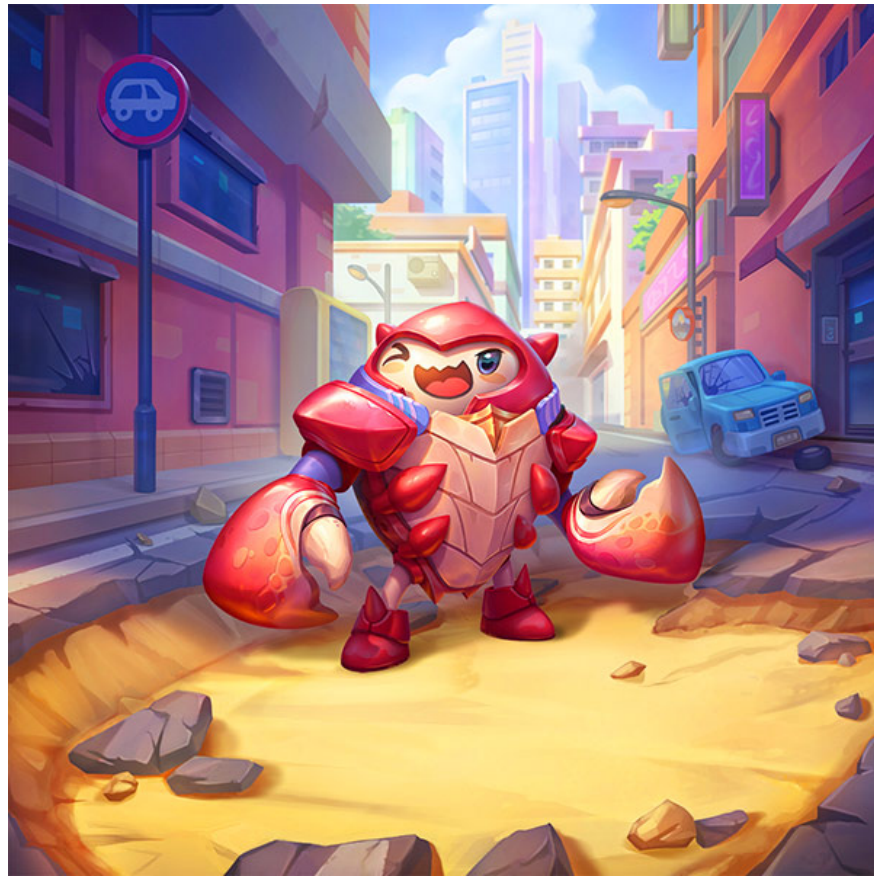
Chibi Zed



Chibi Zed Super Product



Scuttle



Super Evil Sprite



Above are all new updates for players in Truth Arena season 8.5. There will also be changes to old and new champions, there will be champions that will be nerfed and there will be champions that will be buffed. Along with that are changes in technology upgrades, heroes and things related to the system.

You finished reading the article "**DTCL season 8.5: Big changes to the shopping cycle, Ultimate Ezreal, Infinity Squad**" edited by the [TipsMake](#) team. We hope this article has provided you with many useful tech tips and tricks. You can search for similar articles on tips and guides. Thank you for reading and for following us regularly.