

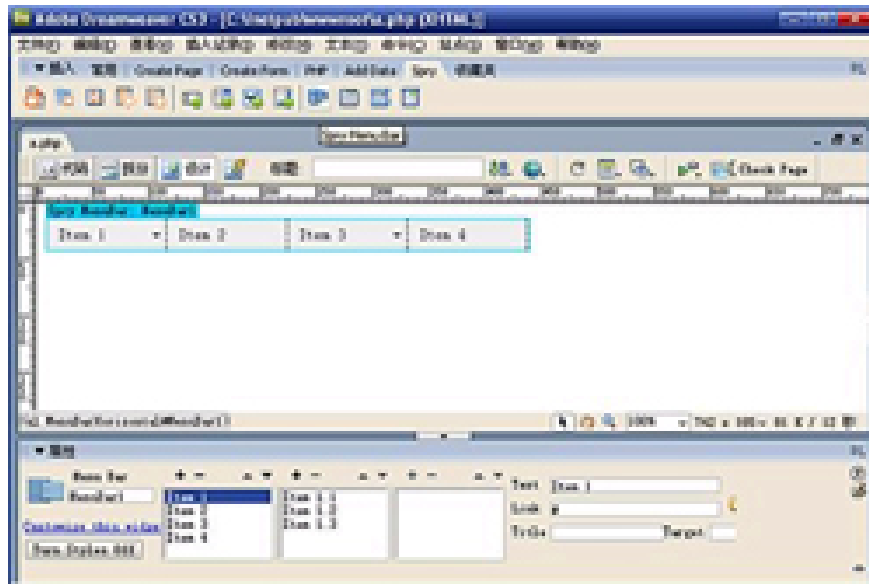
Dreamweaver integrates Photoshop

For web designers, Dreamweaver CS3 integrates Adobe's Creative Suite with the ideal combination of graphics applications.

For web designers, Dreamweaver CS3 integrates Adobe's Creative Suite with the ideal combination of graphics applications.

Macromedia Studio users may take a while to open Photoshop when double-clicking on the image on Dreamweaver page (in the past, Macromedia's Fireworks utility handled such tasks). But when Dreamweaver and Photoshop work well together, this becomes much faster.

Try a version of Dreamweaver CS3, which costs \$ 399, or if you want to buy a part of Creative Suite 3 Design Premium, it costs \$ 1799 (or \$ 599 for an upgrade from CS2); or Creative Suite 3 Web Premium (priced at US \$ 1599, or 499USD for upgrades from CS2 or Macromedia Studio 8, Studio MX or Studio MX 2004).



Dreamweaver CS3 is not only proud of integrating with Photoshop CS3 but also advanced Cascading Style Sheets management tools.

The two-way combination between Dreamweaver and Photoshop works quite well: You can copy all Photoshop images and paste them directly into Dreamweaver; A dialog box allows you to select the optimal image options for the web. Double click on the image in Dreamweaver and it will open in Photoshop with all the original layers, filters and Photoshop file attributes.

The program has 2 other notable additions. The Spry platform of interactive Ajax applications allows you to drag

and drop links to XML data into your pages. Advanced Cascading Style Sheets management tools include online CSS Advisor resources for troubleshooting browser compatibility issues.

Spry effects allow you to make web page elements fade or show, zoom in or out or move across the screen without writing commands and without requiring any server components. Adobe says that Spry code is 99% HTML, so it's easy to customize.

The program also adds Browser Compatibility Check which lists the problems your site faces in different versions of Internet Explorer, Firefox, Netscape and any other web browser you want to add; At the same time, Dreamweaver's code window highlights the CSS-related issues with green.

Existing Dreamweaver users can upgrade to the new standalone version for \$ 199 and continue to use it with Fireworks and Macromedia applications before, but they will lack the most effective features of the new version, those are Direct link to other tools in CS3.

Dreamweaver and Photoshop duo are much more powerful when combined.

You finished reading the article "**Dreamweaver integrates Photoshop**" edited by the [TipsMake](#) team. We hope this article has provided you with many useful tech tips and tricks. You can search for similar articles on tips and guides. Thank you for reading and for following us regularly.